

CE CE
EN14428 EN12150

- GB All shower products are designed and manufactured according to EN14428
All the glass used on the product are certified and tested according to EN12150
- ES Todas las mamparas han sido diseñadas y fabricadas de acuerdo con
Todos los cristales utilizados en nuestros productos están certificados y probados de acuerdo con

GME
DIVISIÓN BAÑOS

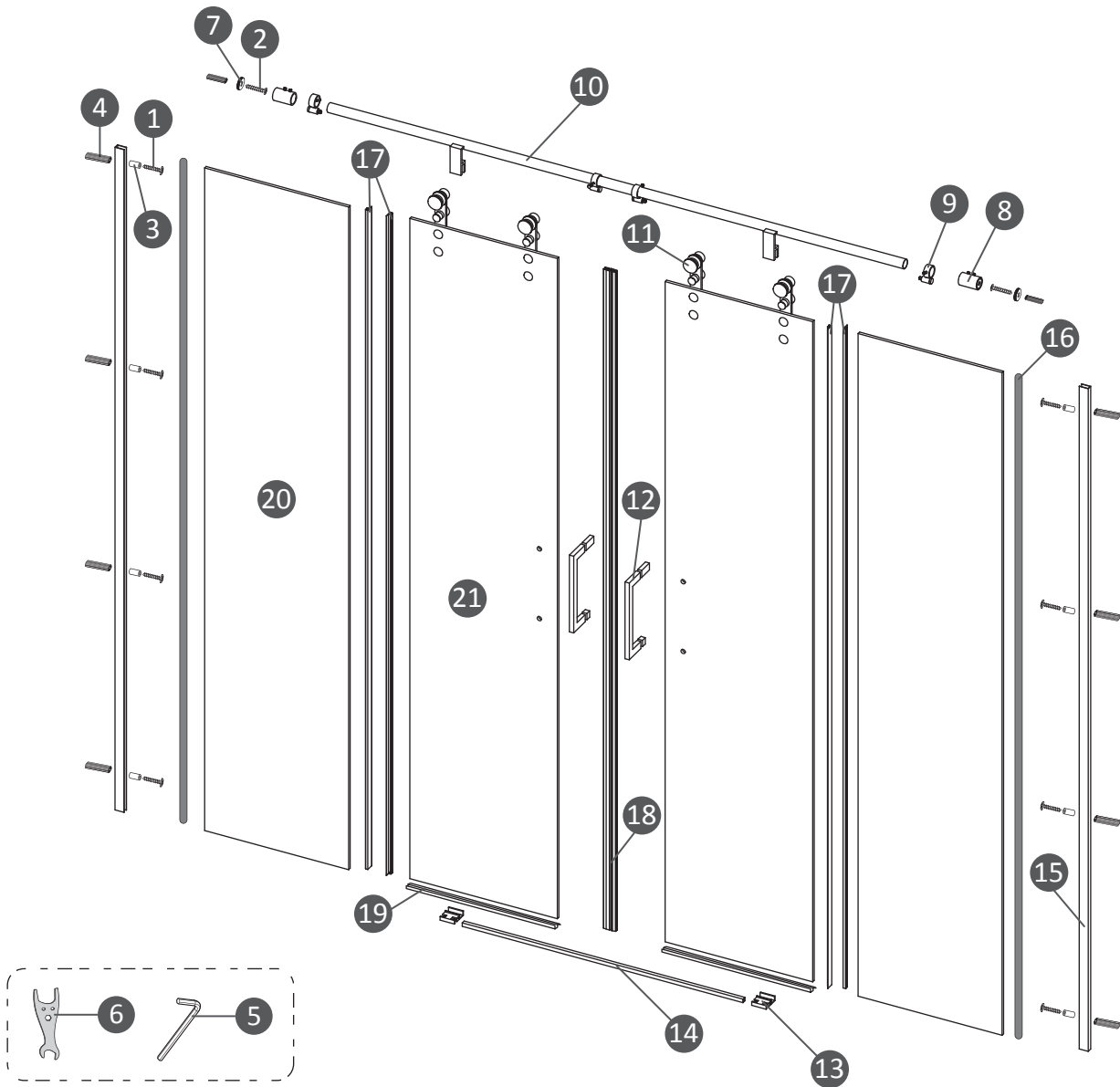


frontales
MOVING
spazio
2fijo&
2correderas

IMPORTANT INFORMATION/INFORMACIÓN IMPORTANTE

- **GB** Always wear safety goggles and work gloves when installing or disassembling this product, especially when working with glass panels.
- When handling, never rest the corner of the glass directly on the floor or hit the corner with any object. This can cause the glass to break.
- Always have two persons to install or disassemble the shower.
- Small children should never use the shower unsupervised or without proper instructions for safety use.
- Small children should never hit, lean, or hang on the shower product. Nor should they do any inappropriate activity in the vicinity of the shower.
- Tempered safety glass is designed to shatter into small tiny pieces when the glass is broken, this is to avoid serious injury.
- **ES** Llevar gafas y guantes de seguridad durante la instalación o desmontaje de este producto, especialmente durante la manipulación de los cristales
- Durante la manipulación, nunca dejar descansar las esquinas de los cristales directamente en el suelo o golpearlos con cualquier objeto.
Puede provocar la rotura del cristal
- Es conveniente que la instalación o el desmontaje sea llevado a cabo por dos personas.
- Los niños no deben usar la ducha sin supervisión o sin apropiadas instrucciones de uso para sus seguridad
- Los niños no deben, bajo ningún concepto, golpear, apoyarse o colgarse de los productos de ducha.
De la misma manera, deberán realizar actividades inapropiadas en las inmediaciones de la mampara.
- El cristal templado de seguridad ha sido diseñado para romper en pequeñas piezas con el objetivo de evitar daños mayores

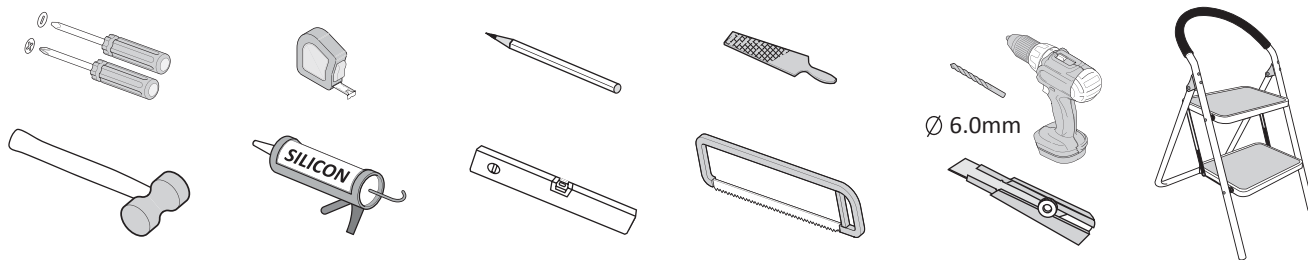
SERVICE PARTS DIAGRAM & LIST/DESPIECE



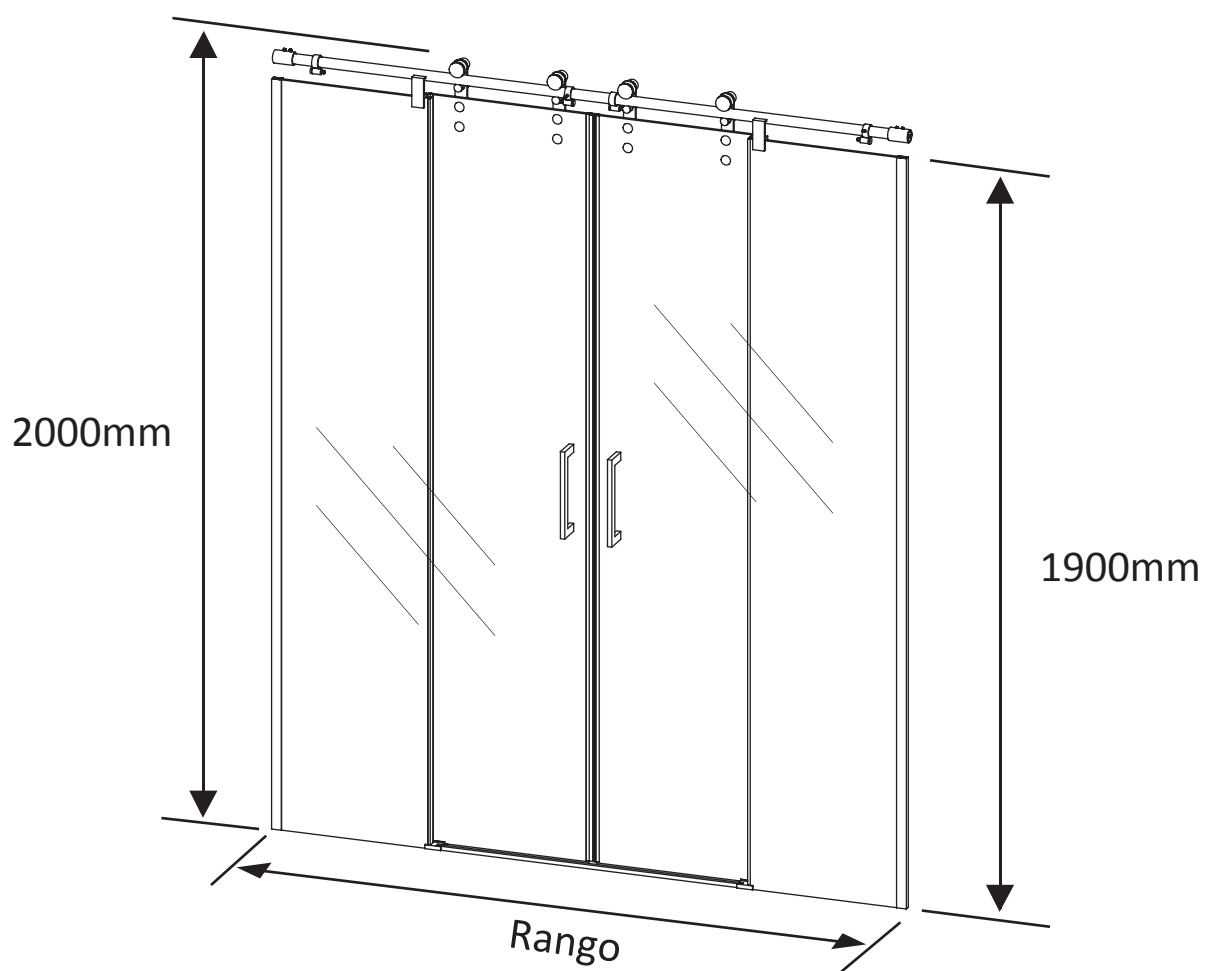
#	Description/Descripción
01	ST4x45mm screw set
02	ST4x35mm screw set
03	Internal plastic plugs
04	Plastic plugs
05	Allen key
06	Spanner
07	Wall internal anchor bushing
08	Rail connector sleeve with screw
09	Rail stopper sleeve with bumper
10	Rail
11	Stainless steel roller set

#	Description/Descripción
12	Handle set
13	Sliding guide set
14	Sill extrusion
15	Wall jamb fix panel
16	PVC steal gasket for fix panel
17	PVC water deflector side gasket
18	PVC magnetic gasket
19	PVC water deflector bottom gasket
20	Fixed panel
21	Mobile panel

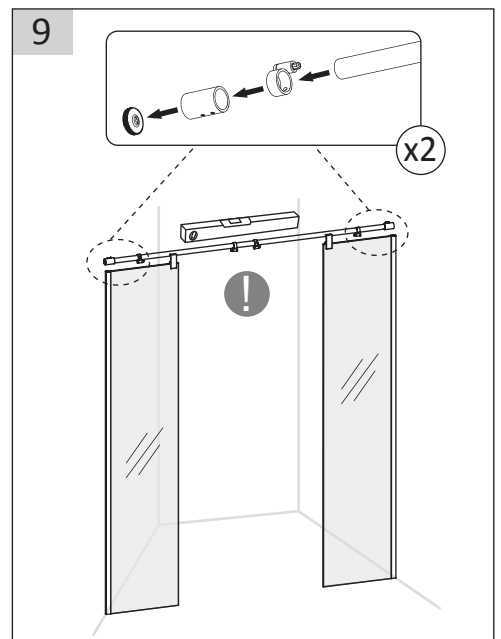
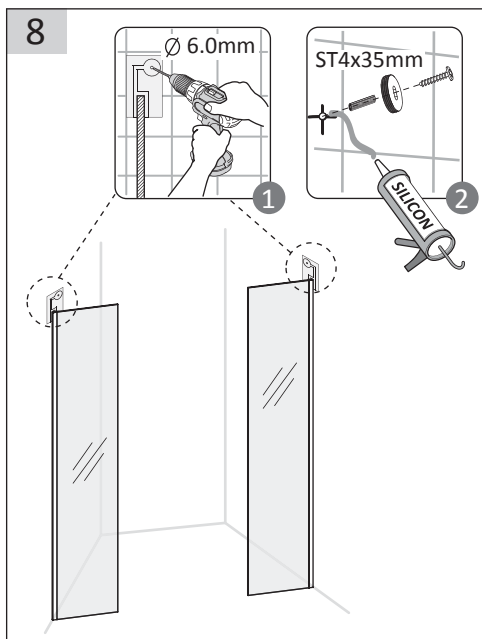
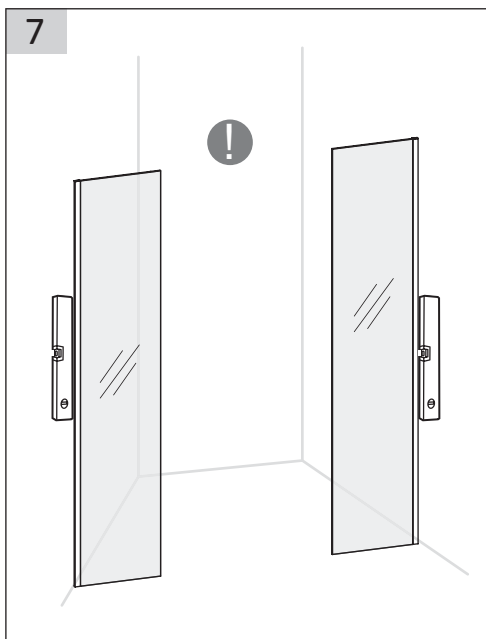
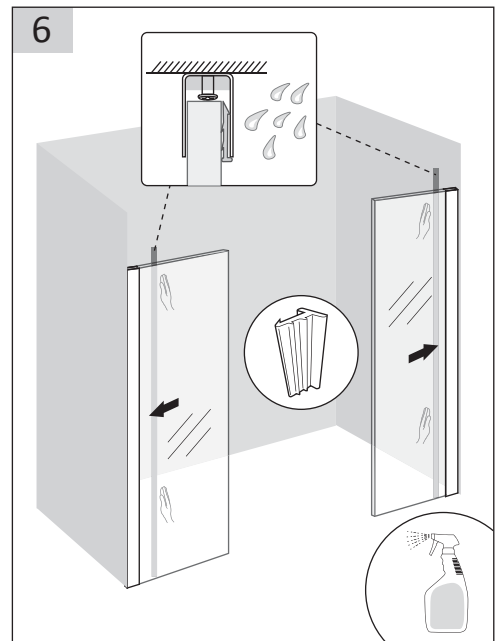
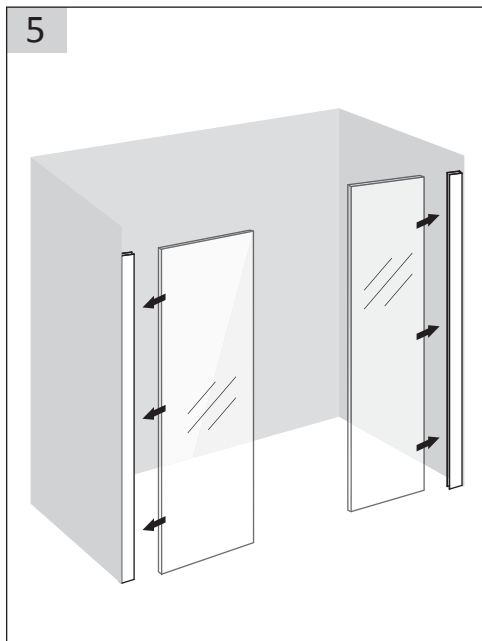
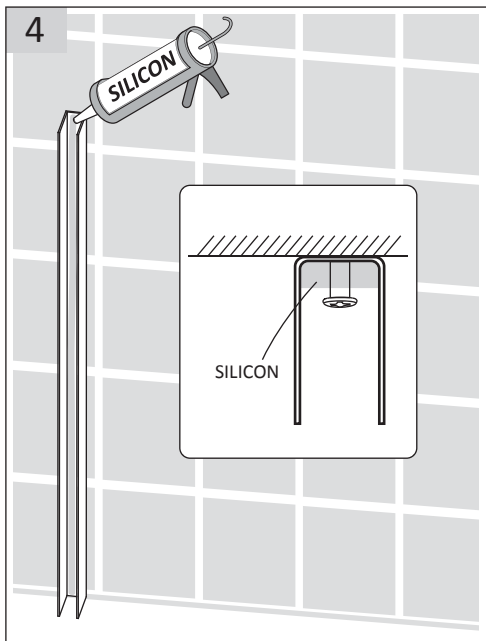
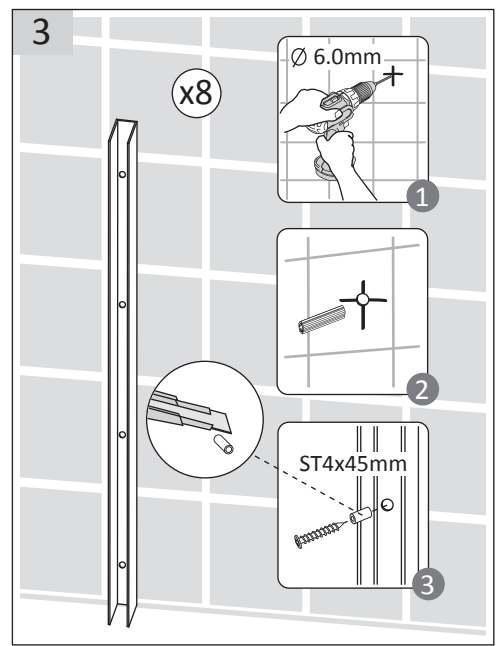
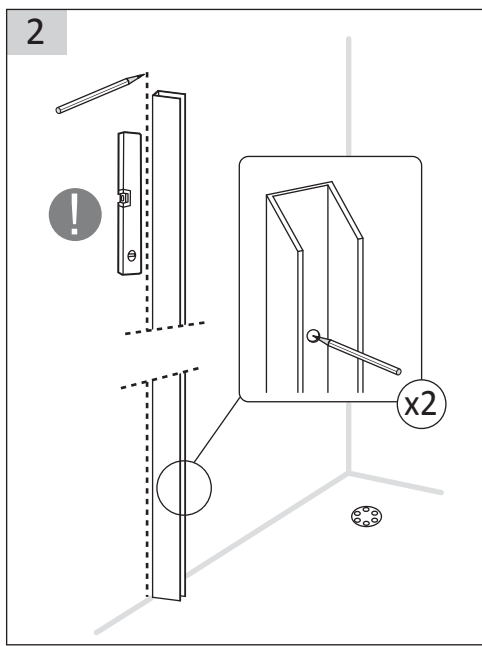
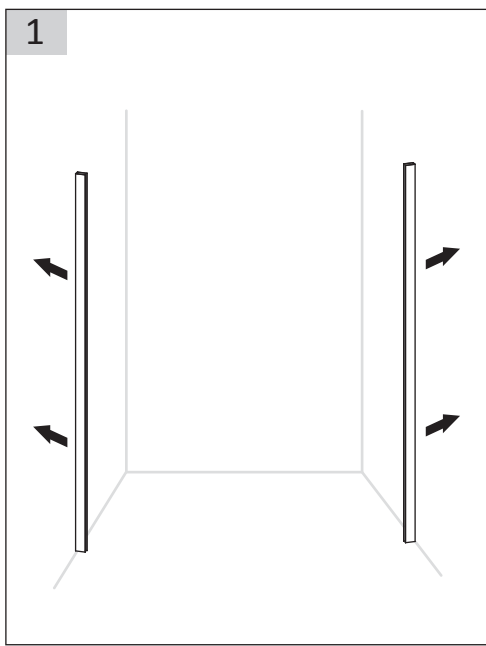
NECESSARY TOOLS/HERRAMIENTAS NECESARIAS

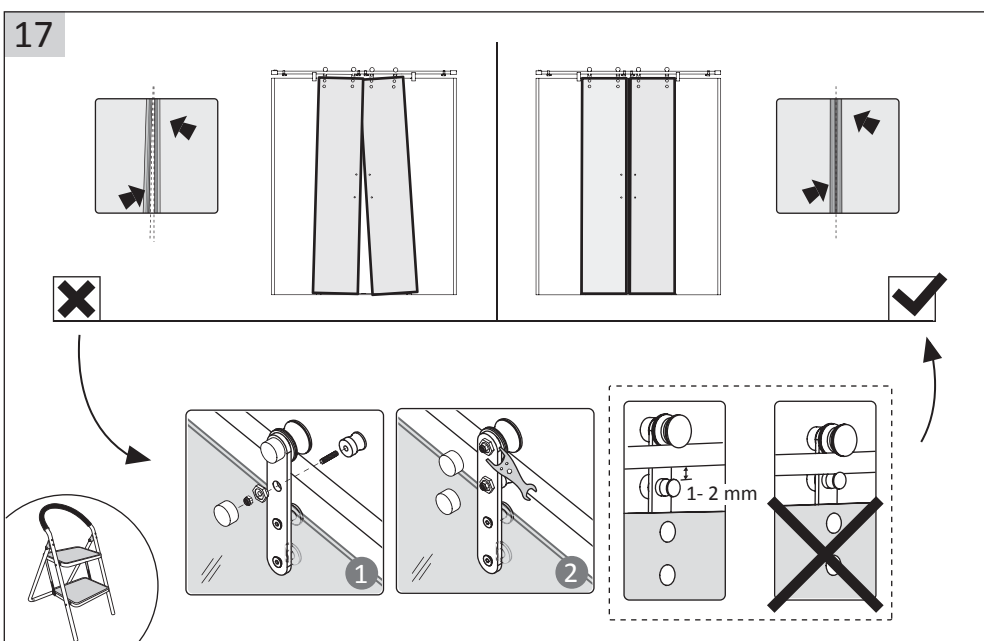
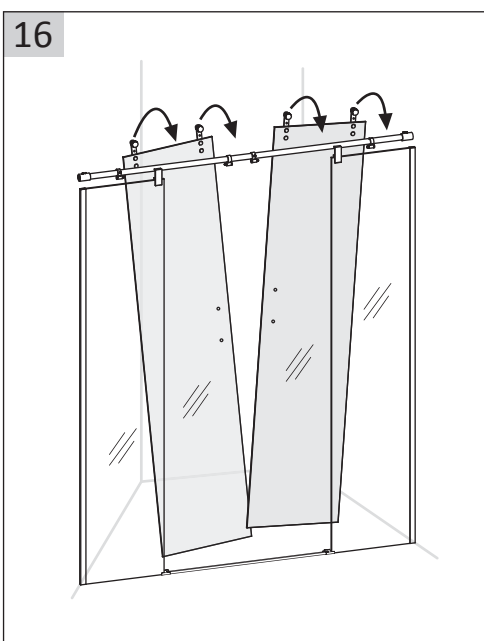
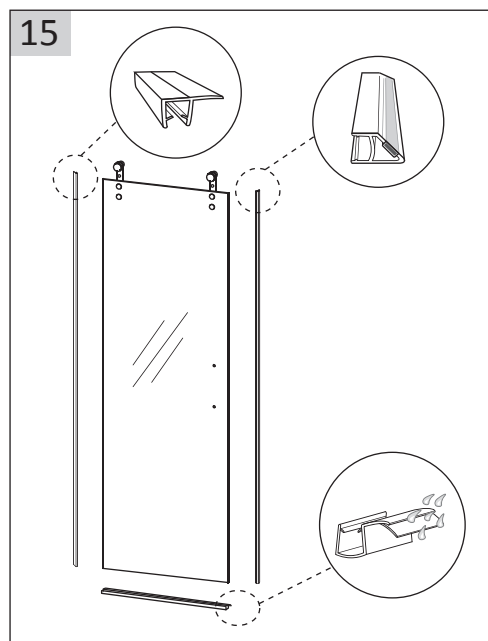
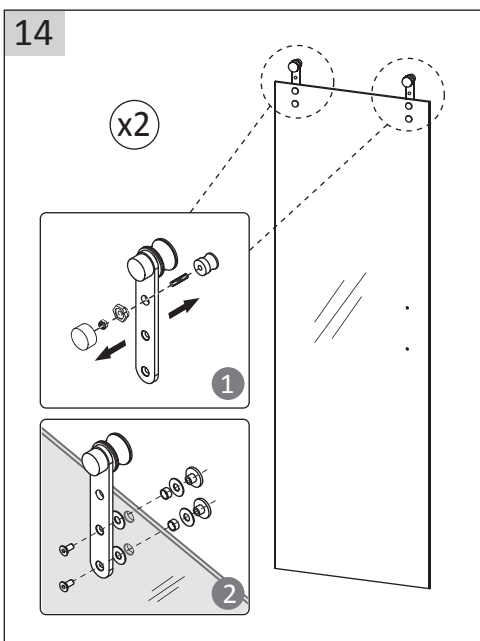
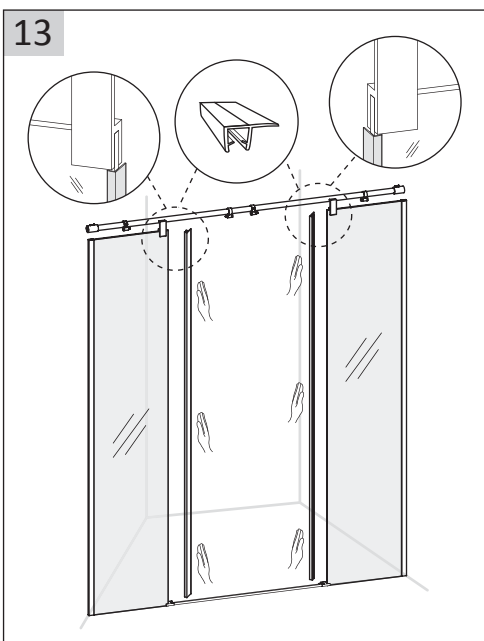
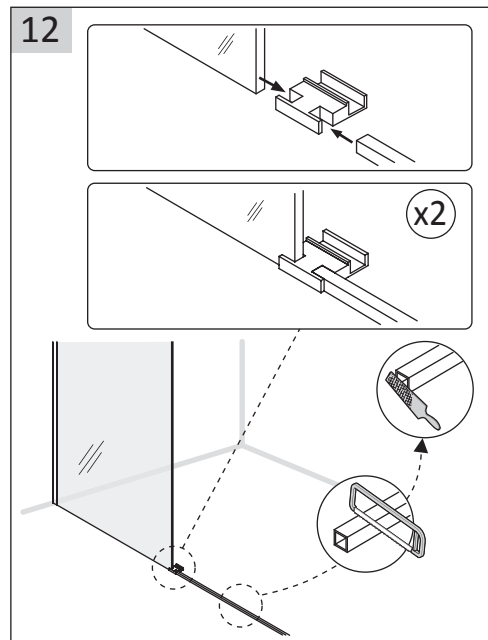
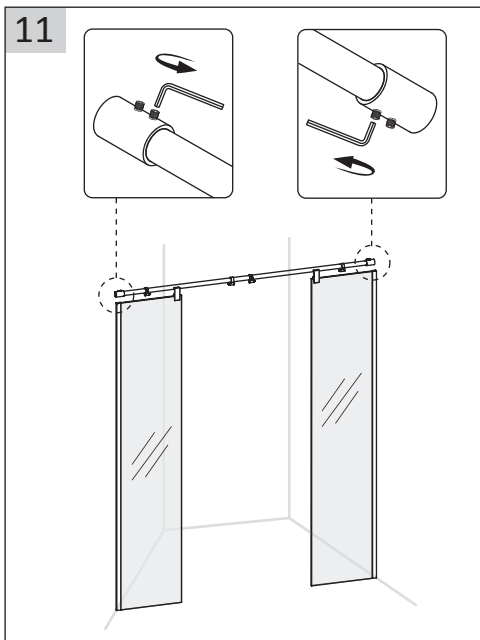
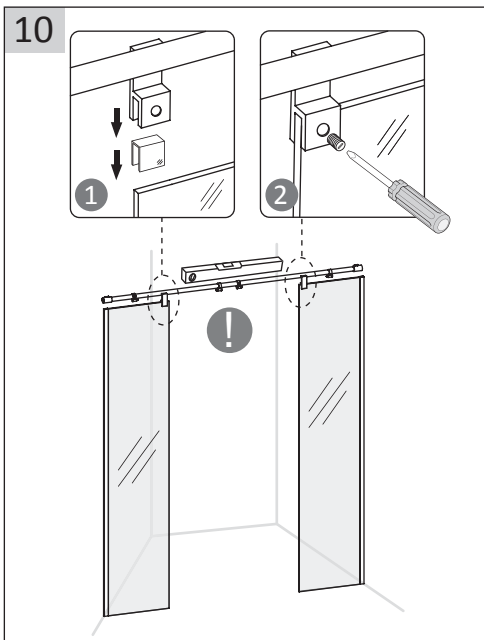


DIMENSIONS/MEDIDAS

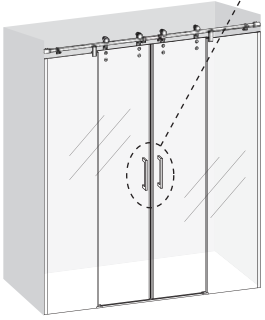
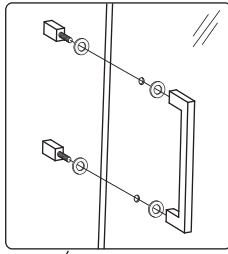


Reference/Referencias	Description/Descripción	Opening Range/Apertura	Range/Rango
1012	frontal ducha MOVING STEEL SPAZIO 160	51-61	152-162
1013	frontal ducha MOVING STEEL SPAZIO 170	61-71	162-172
1014	frontal ducha MOVING STEEL SPAZIO 180	61-71	172-182

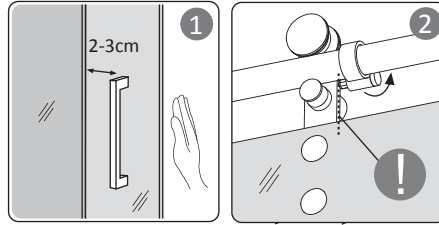




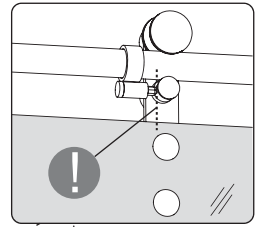
18



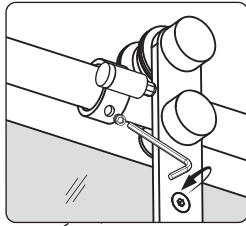
19



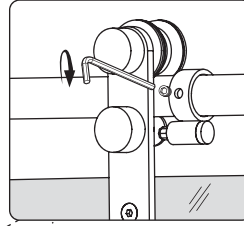
20



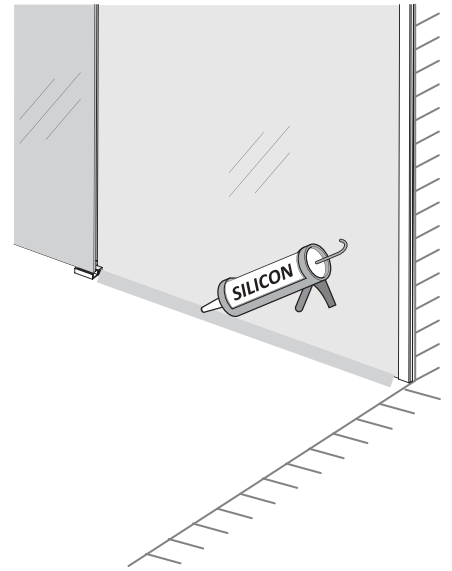
21



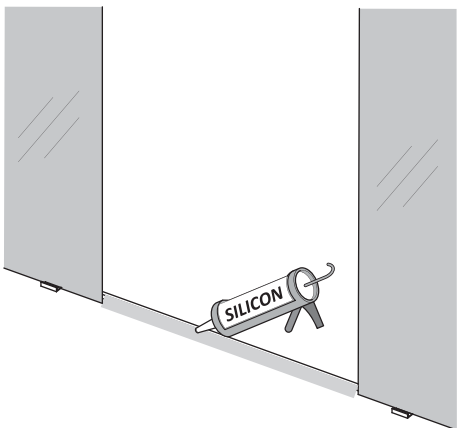
22



23



24



25



GME Lorente Internacional SL
C\ Pinaeta,6
Pq. Ciudad Mudeco
46930 - Quart Poblet
(Valencia) -España

telf. 00 34 96 252 18 55
fax 00 34 96 252 18 56
info@gmelorente.com
www.gmelorente.com

GME
DIVISIÓ BAÑOS