

## MONTAGEANLEITUNG

- |  |                                 |   |                        |
|--|---------------------------------|---|------------------------|
|  | MONTAGEANLEITUNG                |  | MONTAJ TALIMATI        |
|  | ASSEMBLY INSTRUCTION            |  | ASENNUSOHJE            |
|  | DE INSTRUCTIE VAN DE ASSEMBLAGE |  | BRUGSANVISNING         |
|  | ISTRUZIONE DELL'ASSEMBLEA       |  | BRUKSANVISNING         |
|  | INSTRUCCIÓN DE ASAMBLEA         |  | UPUTE ZA MONTAŽU       |
|  | INSTRUCTION DE MONTAGE          |  | NAVODILA ZA MONTAŽO    |
|  | NÁVOD K MONTÁŽI                 |  | SZERELÉSI ÚTMUTATÓ     |
|  | MONTERINGSANVISNING             |  | INSTRUCTIUNI DE MONTAJ |



Version 16.6

Modell-Nr.

# 12090

ART.-NR. FRONT KORPUS

12092

Rot  
(ähnl. RAL 3002)

Silber

12097

Ultramarinblau  
(RAL 5002)

Silber

12096

Silber

Schwarz  
(RAL 9005)

Friedrich Küpper GmbH  
Friedrich-Küpper-Weg  
54570 Berlingen  
Deutschland

Telefon +49 (0) 65 91 - 95 42 0  
Telefax +49 (0) 65 91 - 95 42 17  
E-Mail [info@friedrich-kuepper-gmbh.de](mailto:info@friedrich-kuepper-gmbh.de)  
Internet [www.friedrich-kuepper-gmbh.de](http://www.friedrich-kuepper-gmbh.de)

## INZELTEILE / PIECES

1× **A**



772 mm × 475 mm

Art.-Nr. E0154 (Silber/silver)  
Art.-Nr. E0155 (Schwarz/black)

1× **B**



772 mm × 475 mm

Art.-Nr. E0165 (Silber/silver)  
Art.-Nr. E0166 (Schwarz/black)

1× **C**



548 mm × 473 mm

Art.-Nr. E0179 (Silber/silver)  
Art.-Nr. E0172 (Schwarz/black)

1× **D**



548 mm × 473 mm

Art.-Nr. E0184 (Silber/silver)  
Art.-Nr. E0183 (Schwarz/black)

1× **E**



474 mm × 480 mm

Art.-Nr. E0194 (Silber/silver)

1× **K**



403 mm × 468 mm

Art.-Nr. E0230 (Silber/silver)  
Art.-Nr. E0227 (Rot/red)  
Art.-Nr. E0229 (Blau/blue)

1× **L**



400 mm × 25 mm

Art.-Nr. E0233 (Silber/silver)  
Art.-Nr. E0234 (Schwarz/black)

1× **Y**



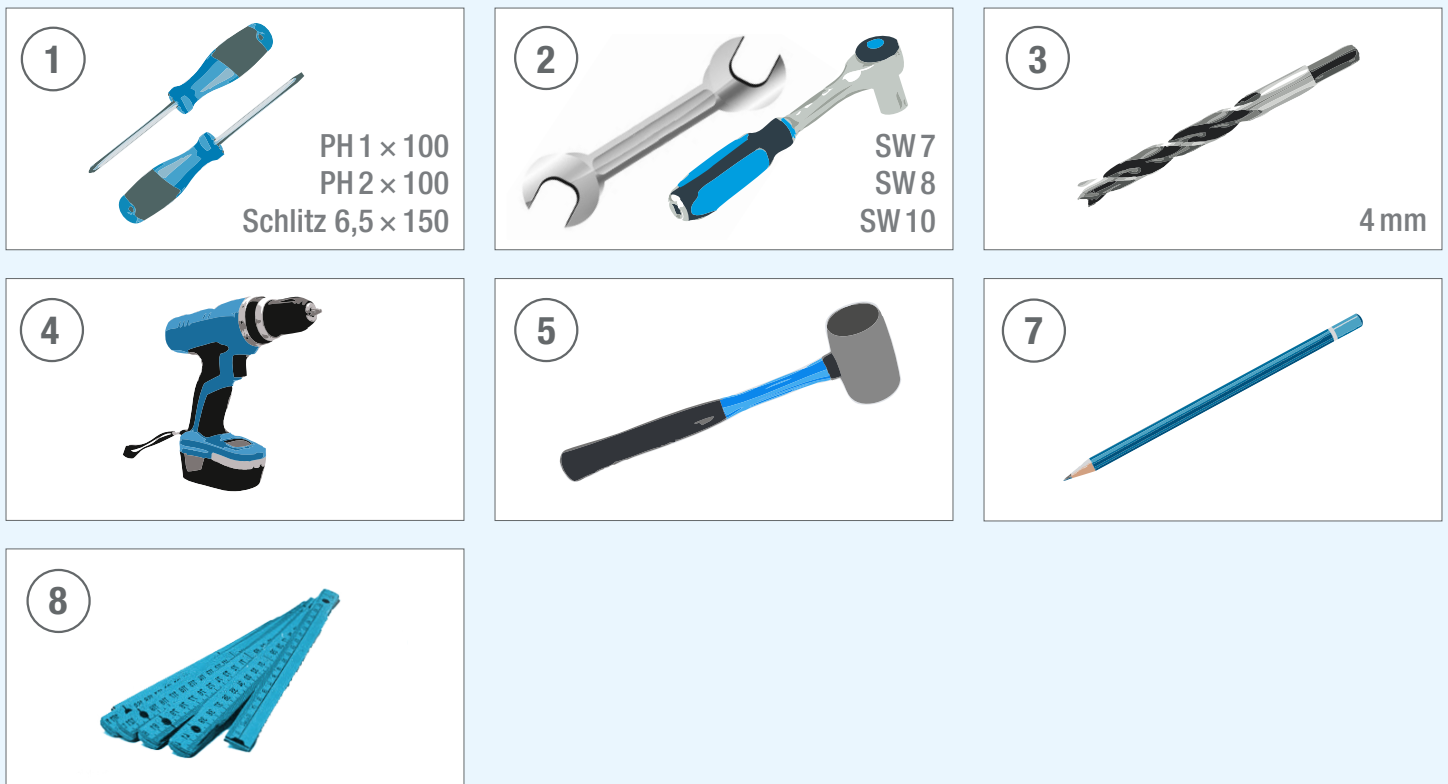
600 mm × 600 mm

Art.-Nr. E0253

## BEUTELINHALT / BAG CONTENT

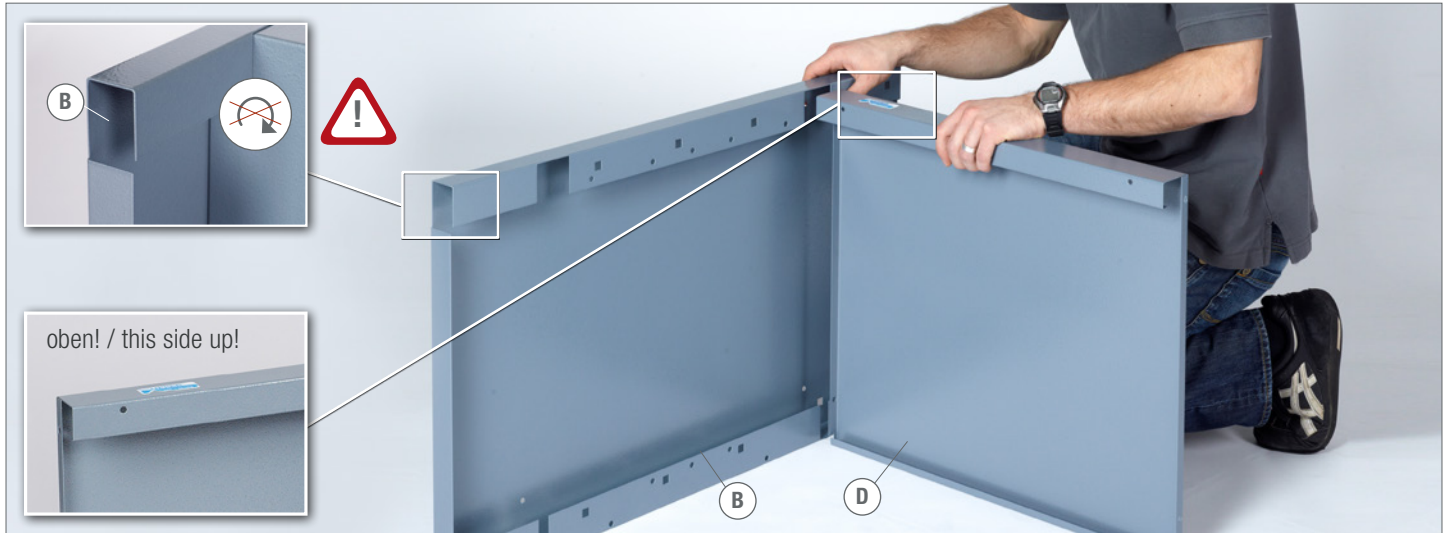


## BENÖTIGTES WERKZEUG / NEEDED TOOLS



1.  2 × M5  2 × M5 × 10  2 × 5,3MM

②  SW8  ① PH2 × 100



2.  2 × M5  2 × M5 × 10  2 × 5,3MM

②  SW8  ① PH2 × 100



3. 2 × M5 2 × M5 × 10 2 × 5,3MM

② SW8 ① PH2 × 100



4. 6 × M5 6 × M5 × 10 6 × 5,3MM ② SW8 ① PH2 × 100



5. 4 × M8 4 × ⑤ 4 ×



6.

2 × KU4 × 16  
1 ×

①  
PH2 × 100



7.

2 ×



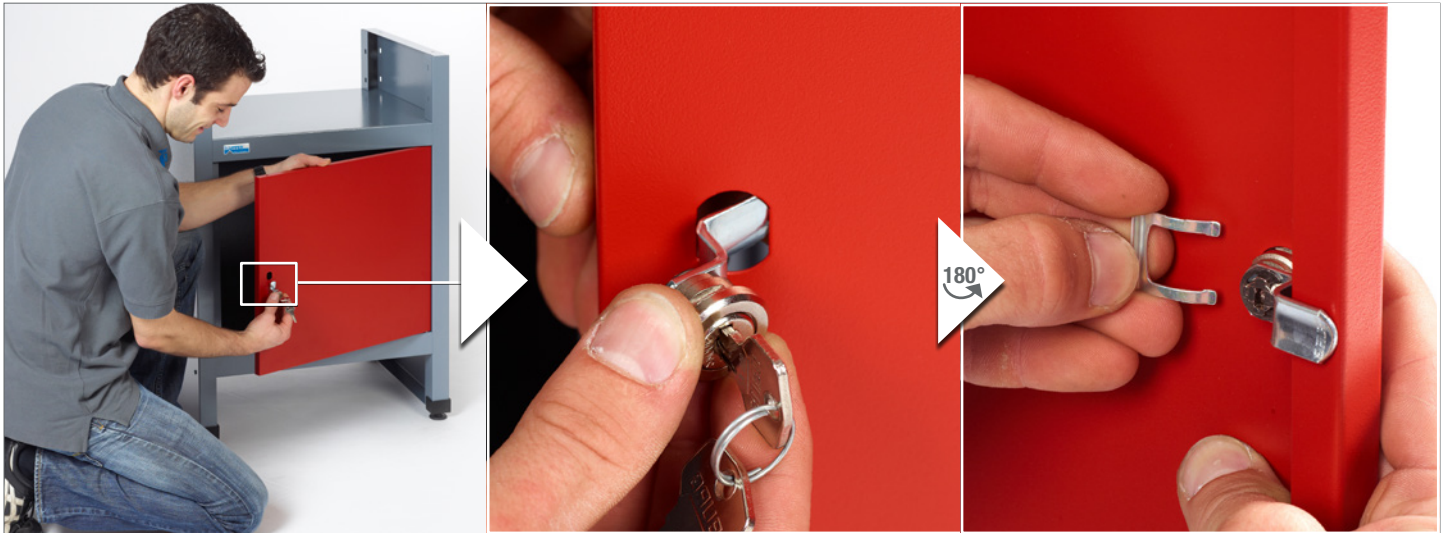
8.



9.



10. 1x  1x 



11.

8  7 



12.

4  3 



13.

4 x 5,5 x 19

2  SW 8 2  SW 8





Modell-Nr.

**12090**