




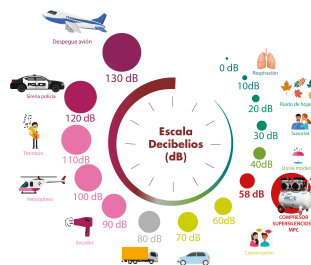
**FICHA DE PRODUCTO - TECHNICAL CHARACTERISTICS**

**CLINIC 250**

**COD: 1.100.106**



 <b>2 HP</b>	 <b>50 LITROS</b>	 <b>235 L/MIN</b>	 <b>230/50/II</b>
 <b>8 BAR</b>	 <b>32 KG</b>	 <b>2 N° CILINDROS</b>	 <b>58 dB-A</b>



**EAN: 8434406300686**



8434406300686

**APLICACIONES**

- Compresor silencioso sin aceite y sin mantenimiento. Especial para clínicas, veterinarias, talleres, laboratorios y dentistas.
- Silent oil-free and maintenance-free compressor. Special for clinics, veterinary, workshops, laboratories and dentists.
- Compresseur silencieux sans huile et sans entretien. Spécial pour cliniques, vétérinaires, ateliers, laboratoires et dentistes.

**OPCIONAL:**

ATORNILLADOR	AIR SCREW	3.200.008
ENROLLADOR	HOSE REEL	2.200.075
MINILUBRICADOR	MINI OIL LUBRICATER	2.100.051-B
PISTOLA PINTAR	PAINT GUN	3.100.006
ESPIRAL POLIURETANO	SPIRAL HOSE	2.200.029

**DOTACION:**

**\*Se entrega con manual en castellano y declaración de conformidad CE.**

**\*Comes with manual in Spanish CE declaration of conformity.**