

KAEMINGK CHINA OFFICE
ROOM 1108, QIANSHUPANFU BUILDING, NO.233, 235, DONG FENG XI ROAD,
YUEXIU DISTRICT, GUANGZHOU, CHINA

Sample Description : HAMMOCK
Style / Item No. : 841765
Client Reference Information : Style / Item No.: 841765,841766
Buyer : KAEMINGK B.V.
Manufacturer : YINGKOU HUAYU LEISURE PRODUCTS CO.,LTD
Supplier : YINGKOU HUAYU LEISURE PRODUCTS CO.,LTD
Country of Origin : CHINA
Country of Destination : EUROPEAN UNION

As above test item and its relevant information regarding to the submission are provided and confirmed by the applicant. SGS is not liable to either the test item or its relevant information, in terms of the accuracy, suitability, reliability or/and integrity accordingly.

Sample Receiving Date : Nov 10, 2020
Test Performing Date : Nov 13, 2020 to Nov 23, 2020
Test Performed : Selected test(s) as requested by applicant
Test Result(s) : For further details, please refer to the following page(s)

Signed for and on behalf of
SGS-CSTC Standards Technical Services Co., Ltd. Shunde Branch



Bill Wang
Authorized Signatory

scan to see the report



SDHL2011029577FT



Unless otherwise agreed in writing, this document is issued by the Company subject to its General Conditions of Service printed overleaf, available on request or accessible at <http://www.sgs.com/en/Terms-and-Conditions.aspx> and, for electronic format documents, subject to Terms and Conditions for Electronic Documents at <http://www.sgs.com/en/Terms-and-Conditions/Terms-e-Documents.aspx>. Attention is drawn to the limitation of liability, indemnification and jurisdiction issues defined therein. Any holder of this document is advised that information contained hereon reflects the Company's findings at the time of its intervention only and within the limits of Client's instructions, if any. The Company's sole responsibility is to its Client and this document does not exonerate parties to a transaction from exercising all their rights and obligations under the transaction documents. This document cannot be reproduced except in full, without prior written approval of the Company. Any unauthorized alteration, forgery or falsification of the content or appearance of this document is unlawful and offenders may be prosecuted to the fullest extent of the law. Unless otherwise stated the results shown in this test report refer only to the sample(s) tested and such sample(s) are retained for 30 days only.

Attention: To check the authenticity of testing / inspection report & certificate, please contact us at telephone: (86-755) 8307 1443, or email: CN.Doccheck@sgs.com

SGS-CSTC Standards Technical Services Co., Ltd.
Shunde Branch Harbin

1/F, 1st Building, European Industrial Park, No.1 Shunde South Road, Wusha Section, Daliang Town, Shunde, Foshan, Guangdong, China 528333 t (86-757)22805888 f (86-757)22805858 www.sgs.com.cn
中国·广东·佛山市顺德区大良街道办事处五沙顺和南路1号欧洲工业园一号厂房首层 邮编: 528333 t (86-757)22805888 f (86-757)22805858 e sgs.china@sgs.com

Test Result Summary

No.	Test(s) Requested	Result(s)	Comments
1	SGS-HL-HFU GPSD 001 HAMMOCK V2, excluding the instruction for use.	PASS	/
2	Entry 43 of Commission Regulation (EC) No 552/2009 amending Annex XVII of REACH Regulation (EC) No 1907/2006 - Azodyes	PASS	/
3	European standard EN 71-2: 2011+A1:2014 Safety of toys - Part 2: Flammability Clause 4.1	PASS	/
4	Colour Fastness To Rubbing	PASS	/
	Colour Fastness To Washing	PASS	/

For further details, please refer to the following page(s)



Unless otherwise agreed in writing, this document is issued by the Company subject to its General Conditions of Service printed overleaf, available on request or accessible at <http://www.sgs.com/en/Terms-and-Conditions.aspx> and, for electronic format documents, subject to Terms and Conditions for Electronic Documents at <http://www.sgs.com/en/Terms-and-Conditions/Terms-e-Document.aspx>. Attention is drawn to the limitation of liability, indemnification and jurisdiction issues defined therein. Any holder of this document is advised that information contained hereon reflects the Company's findings at the time of its intervention only and within the limits of Client's instructions, if any. The Company's sole responsibility is to its Client and this document does not exonerate parties to a transaction from exercising all their rights and obligations under the transaction documents. This document cannot be reproduced except in full, without prior written approval of the Company. Any unauthorized alteration, forgery or falsification of the content or appearance of this document is unlawful and offenders may be prosecuted to the fullest extent of the law. Unless otherwise stated the results shown in this test report refer only to the sample(s) tested and such sample(s) are retained for 30 days only.

Attention: To check the authenticity of testing / inspection report & certificate, please contact us at telephone: (86-755) 8307 1443, or email: CN.Doccheck@sgs.com

TESTS AND RESULTS

Part 1. Test Conducted:

SGS-HL-HFU GPSD 001 HAMMOCK V2, excluding the instruction for use.

No. of Sample:

1 piece (Sample #1). For more sample information and pictures, please refer to the following page.

Scope of testing

With reference to the safety requirements of Directive 2001/95/EC and combined with relative standards related to furniture products as there is no existing European standard for this type of product.

This test program defines the safety requirements for stationary, hanging or foldable hammocks which are used inside or outside of private place for adult use only.

If no nominal loading of the product is given, specify 110kg each people.

This test program only define requirement for **mechanical risks**. Flammability and chemical risks are not cover by this test program.

If the support or the canvas is sold alone, the client should provide the missing part. The assessment will be performed on the sold part only.

Notices:

1. This protocol is not developed fully according to the procedure laid down in Directive 98/34/EC and is only presumed to conform to the general safety requirements of Directive 2001/95/EC.
2. This protocol does not address incidents in which specified products are unreasonably misused, are used in a careless manner that disregards the warnings and instructions that are provided with each product, or those instances where the caregiver leaves the infant unattended in the products.
3. It should be noted that the effect of ageing and degradation of materials is not included.

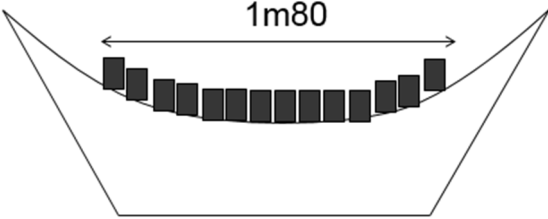
Detail of test

Test Property	Test Method	Requirements
Preliminary preparation	General	<ul style="list-style-type: none"> - The test shall be carried out in indoor ambient conditions in range of 15 °C - 25 °C, the maximum and/or minimum temperature shall be recorded in the test report. - The sample shall be tested as delivered. If of knock-down type, it shall be assembled according to the instructions supplied with the unit. If it can be assembled or combined in different ways, the most onerous combinations shall be used for each test.
Assembly and inspection before test	General	Assemble the sample in accordance with the manufacturer's instructions. Prior to the test, inspect it visually and record any defects.
Test sequence		The tests shall be carried out in the order laid down in this protocol on the same sample unless material testing, which may be carried out on an additional sample

Reference standard documents used to establish this protocol

EN 581-1 EN 1022 : 2018 EN 1728 : 2012	General Safety Requirement for outdoor furniture Stability for seats Test methods for seats
--	---



Specific safety requirements for potties and toilet trainers			
Test Property	Test Method	Requirements	Results
Safety Requirements <u>General safety requirements</u>	EN 581-1	The product must comply to the EN 581-1 requirements.	PASS See test result 1
Stability – Swing - Only for product with frame	<p>Load uniformly the hammock with nominal load on a length not more than 1m80.</p>  <p>For hanging chair, let the mass lying on the backrest from the geometrical center of the seat.</p> <p>Pull the hammock until an angle of 12° and let him swing freely.</p> <p><i>(note: inspire by EN 1022 test for rocking chair)</i></p>	The stand shall not overturn.	N/A
Static Load test	<p>Load evenly the hammock with masses for 1 hour according to:</p> <ul style="list-style-type: none"> - 160 Kg for single person use or - 320kgs for two persons use. or - 1,4 x claimed maximum load 	<p>a) There are no fracture of any joint, member or component</p> <p>b) The hammock fulfils its function after removal of the test loads</p> <p>c) The hammock fulfils the safety requirements</p>	<p>PASS</p> <p>Claim: 160 kg (Specified by applicant);</p> <p>Tested: 224 kg</p>
Impact test	<p>Carry out the test by EN1728: 2012 clause 6.24 but without foam</p> <p>Impactor: 25kg (EN1728:2012.)</p> <p>Height of Drop: 180 mm.</p> <p>Application point: geometrical center of the seat</p>	<p>a) There are no fracture of any joint, member or component</p> <p>b) The hammock fulfils its function after removal of the test loads</p> <p>c) The hammock fulfils the safety requirements</p>	PASS



Specific safety requirements for potties and toilet trainers			
Test Property	Test Method	Requirements	Results
Durability	Carry out the test according to EN1728:2012 clause 6.17 ; 12 500 cycles, 1000N force. Application point : geometrical center of the hammock or the seat	a) There are no fracture of any joint, member or component b) The hammock fulfils its function after removal of the test loads c) The hammock fulfils the safety requirements	PASS
Dynamic durability test – Only for product with frame	Loaded with nominal loading evenly distributed. Swing so far that the stand doesn't raise off the ground but no more than 12°. Swing in both direction 500 cycles (1 cycle = swing in both direction) Record if there is no visible degradation	a) There are no fracture of any joint, member or component b) The hammock fulfils its function after removal of the test loads c) The hammock fulfils the safety requirements	N/A
Instruction for use	Instruction for use shall be provided in the languages of the country where the hammock/chair are sold. These instructions shall be headed: "IMPORTANT, RETAIN FOR FUTURE REFERENCE : READ CAREFULLY" It shall contain at least the following details: a) Name and address of the manufacturer/supplier/ retailer If applicable: b) Assembly instructions c) Instruction for the care and maintenance d) Information that installation shall be carried out exactly according to manufacturer instruction – otherwise a safety risk can occur if incorrectly installed; a warning shall be given to the consumer to notify them of the related risk.		N/R

Remark:

1. N/A – Not applicable; N/R – Not Requested; N/P – Not provided.



Part 2. Test Conducted (SGS Ref. No.: CAN20-201984)

Test Part Description :

SGS Sample ID	Description
CAN20-201984.001	Black fabric + Beige fabric

Remarks :

- (1) 1 mg/kg = 0.0001%
- (2) MDL = Method Detection Limit
- (3) ND = Not Detected (< MDL)
- (4) "-" = Not Regulated

Entry 43 of Regulation (EC) No 552/2009 amending Annex XVII of REACH Regulation (EC) No 1907/2006 -Azo Dyes

Test Method : With reference to ISO 14362-1:2017, analysis was performed by GC-MS/HPLC-DAD.
 Determination of 4-aminoazobenzene (CAS No.:60-09-3) with reference to ISO 14362-3:2017, analysis was performed by GC-MS//HPLC-DAD.

Test Item(s)	CAS NO.	Limit	Unit	MDL	001	
					Method A	Method B
4-Aminobiphenyl	92-67-1	30	mg/kg	5	ND	ND
Benzidine	92-87-5	30	mg/kg	5	ND	ND
4-chloro-o-toluidine	95-69-2	30	mg/kg	5	ND	ND
2-naphthylamine	91-59-8	30	mg/kg	5	ND	ND
o-aminoazotoluene	97-56-3	30	mg/kg	5	ND	ND
5-nitro-o-toluidine / 2-Amino-4-nitrotoluene	99-55-8	30	mg/kg	5	ND	ND
4-chloroaniline	106-47-8	30	mg/kg	5	ND	ND
4-methoxy-m-phenylenediamine / 2,4-Diaminoanisole	615-05-4	30	mg/kg	5	ND	ND
4,4'-diaminodiphenylmethane, MDA	101-77-9	30	mg/kg	5	ND	ND
3,3'-dichlorobenzidine	91-94-1	30	mg/kg	5	ND	ND
3,3'-dimethoxybenzidine	119-90-4	30	mg/kg	5	ND	ND
3,3'-dimethylbenzidine	119-93-7	30	mg/kg	5	ND	ND
4,4'-methylenedi-o-toluidine/3,3'- Dimethyl-4,4'-diaminodiphenylm ethane	838-88-0	30	mg/kg	5	ND	ND
p-cresidine	120-71-8	30	mg/kg	5	ND	ND
4,4'-methylene-bis- (2-chloroaniline)	101-14-4	30	mg/kg	5	ND	ND



Unless otherwise agreed in writing, this document is issued by the Company subject to its General Conditions of Service printed overleaf, available on request or accessible at <http://www.sgs.com/en/Terms-and-Conditions.aspx> and, for electronic format documents, subject to Terms and Conditions for Electronic Documents at <http://www.sgs.com/en/Terms-and-Conditions/Terms-e-Documents.aspx>. Attention is drawn to the limitation of liability, indemnification and jurisdiction issues defined therein. Any holder of this document is advised that information contained hereon reflects the Company's findings at the time of its intervention only and within the limits of Client's instructions, if any. The Company's sole responsibility is to its Client and this document does not exonerate parties to a transaction from exercising all their rights and obligations under the transaction documents. This document cannot be reproduced except in full, without prior written approval of the Company. Any unauthorized alteration, forgery or falsification of the content or appearance of this document is unlawful and offenders may be prosecuted to the fullest extent of the law. Unless otherwise stated the results shown in this test report refer only to the sample(s) tested and such sample(s) are retained for 30 days only.

Attention: To check the authenticity of testing / inspection report & certificate, please contact us at telephone: (86-755) 8307 1443, or email: CN.Doccheck@sgs.com

Test Report

No.SDHL2011029577FT

Date: Dec 21, 2020

Page 7 of 13

4,4'-oxydianiline	101-80-4	30	mg/kg	5	ND	ND
4,4'-thiodianiline	139-65-1	30	mg/kg	5	ND	ND
o-toluidine	95-53-4	30	mg/kg	5	ND	ND
4-methyl-m-phenylenediamine / 2,4-Toluyldiamine, TDA	95-80-7	30	mg/kg	5	ND	ND
2,4,5-trimethylaniline	137-17-7	30	mg/kg	5	ND	ND
4-aminoazobenzene	60-09-3	30	mg/kg	5	ND	ND
O-Anisidine	90-04-0	30	mg/kg	5	ND	ND
2,4-Xylidine	95-68-1	30	mg/kg	5	ND	ND
2,6-Xylidine	87-62-7	30	mg/kg	5	ND	ND
Comment					PASS	PASS

Notes:

(1) Direct reduction (Method A) refers to the extraction and reduction according to ISO 14362-1:2017 clause 10.2 and relevant clauses. Colorant extraction (Method B) refers to the colourant extraction and subsequent reduction according to ISO 14362-1:2017 Clause 10.1 and relevant clauses.

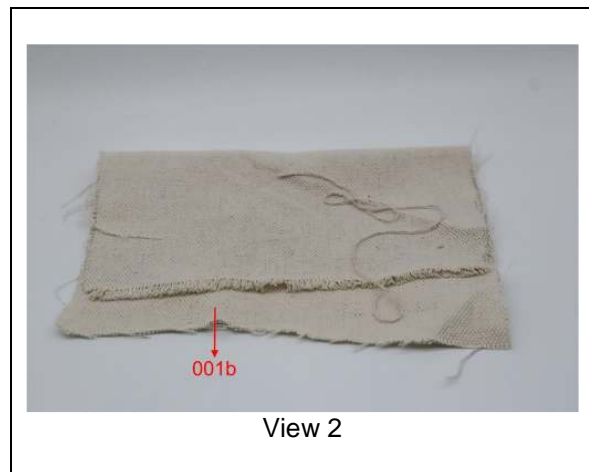
(2) 4-Aminodiphenyl (CAS No. 92-67-1), 2-Naphthylamine (CAS No. 91-59-8) and 2,4-Diaminoanisole (CAS No. 615-05-4) can be indirectly generated from some colorants which do not contain these amines azo bound. The use of banned azo colorants cannot be reliably ascertained without additional information.

(3) In case PU is used, e.g. PU Foams or coatings, it cannot be ruled out that MDA (CAS No. 101-77-9) and TDA (CAS No. 95-80-7) can be released from PU material, not from banned azo colorant. Similarly, for pigment prints, MDA will be released from a chemical fixing agent.

(4) ISO 14362-1:2017 will enable further cleavage of 4-AAB (CAS No. 60-09-3) to non-forbidden amines: aniline and p-phenylenediamine. If aniline and/or p-phenylenediamine is not found, 4-AAB is considered as "ND" (i.e. <5.0 mg/kg). Otherwise, ISO 14362-3:2017 will be employed to verify the presence of 4-AAB.

(5) Test was conducted on composite of random parts of the item as per client's request and the test result is the overall result.

Sample as Received



Remark: This test was subcontracted to SGS-CSTC Standards Technical Services Co., Ltd. Guangzhou Branch.



SGS-CSTC Standards Technical Services Co., Ltd.
Shunde Branch Harbin

Unless otherwise agreed in writing, this document is issued by the Company subject to its General Conditions of Service printed overleaf, available on request or accessible at <http://www.sgs.com/en/Terms-and-Conditions.aspx> and, for electronic format documents, subject to Terms and Conditions for Electronic Documents at <http://www.sgs.com/en/Terms-and-Conditions/Terms-e-Documents.aspx>. Attention is drawn to the limitation of liability, indemnification and jurisdiction issues defined therein. Any holder of this document is advised that information contained hereon reflects the Company's findings at the time of its intervention only and within the limits of Client's instructions, if any. The Company's sole responsibility is to its Client and this document does not exonerate parties to a transaction from exercising all their rights and obligations under the transaction documents. This document cannot be reproduced except in full, without prior written approval of the Company. Any unauthorized alteration, forgery or falsification of the content or appearance of this document is unlawful and offenders may be prosecuted to the fullest extent of the law. Unless otherwise stated the results shown in this test report refer only to the sample(s) tested and such sample(s) are retained for 30 days only.

Attention: To check the authenticity of testing / inspection report & certificate, please contact us at telephone: (86-755) 8307 1443, or email: CN.Doccheck@sgs.com

1/F, 1st Building, European Industrial Park, No.1 Shunhe South Road, Wusha Section, Daliang Town, Shunde, Foshan, Guangdong, China 528333 t (86-757)22805888 f (86-757)22805858 www.sgs.com.cn
中国·广东·佛山市顺德区大良街道办事处五沙顺和南路1号欧洲工业园一号楼首层 邮编: 528333 t (86-757)22805888 f (86-757)22805858 e sgs.china@sgs.com

Part 3. Test Conducted (SGS Ref. No.: SDFS2011007334FF)

Test Conducted:

European standard EN 71-2: 2011+A1:2014 Safety of Toys - Part 2: Flammability Clause 4.1

I. Sample Details

Sample No.:	Materials:	Weight:
1	Fabric	392 g/m ²
2	Fabric	318 g/m ²

II. Precondition and Test Condition

---	Temperature	Relative humidity	Duration
Precondition	(20±5) °C	(65±5)%	24h
Test Condition	25.7 °C	50%	-----

III. Test Results

<u>Clause</u>	<u>Description</u>	<u>Result</u>
---------------	--------------------	---------------

4.1	<p>General requirements The following materials shall not be used in the manufacture of toys: ----celluloid (cellulose nitrate), except when used in varnish, paint or glue, or in balls of the type used for table tennis or similar games, and ----materials with the same behaviour in fire as celluloid. ----materials with a piled surface which produce <i>surface flash</i> when a flame is applied to the tested material under the conditions described in 5.5.1 and 5.5.2. Piled surfaces showing no momentary area of flame over the area of the piled surface remote from the test flame are considered to meet this requirement; In addition, toys shall not contain <i>flammable gases, extremely flammable liquids, highly flammable liquids, flammable liquids</i> and flammable gels except as provided for below: ----<i>flammable liquids</i> and flammable gels supplied in sealed containers having a maximum volume of 15 ml per container; ----<i>highly flammable liquids</i> and <i>flammable liquids</i> being entirely retained within a porous material in capillary channels of writing instruments; ----<i>flammable liquids</i> with a viscosity greater than 260×10⁻⁶ m²/s corresponding to a flow time of more than 38 s when determined in accordance with EN ISO 2431 using cup No. 6; ----<i>highly flammable liquids</i> contained in <i>chemical toys</i>.</p>	<p>Sample 1~2 Pass</p>
-----	--	---

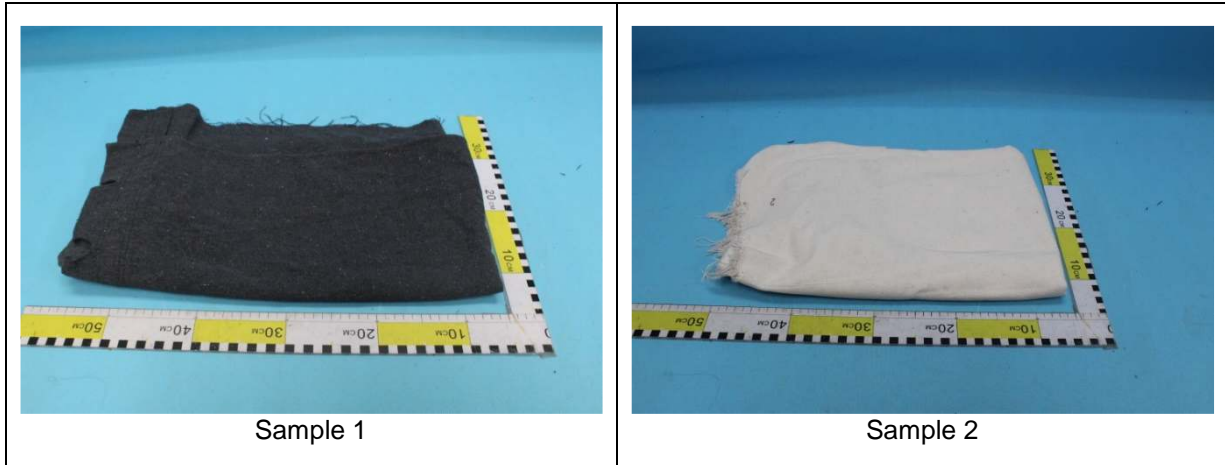


Unless otherwise agreed in writing, this document is issued by the Company subject to its General Conditions of Service printed overleaf, available on request or accessible at <http://www.sgs.com/en/Terms-and-Conditions.aspx> and, for electronic format documents, subject to Terms and Conditions for Electronic Documents at <http://www.sgs.com/en/Terms-and-Conditions/Terms-e-Documents.aspx>. Attention is drawn to the limitation of liability, indemnification and jurisdiction issues defined therein. Any holder of this document is advised that information contained hereon reflects the Company's findings at the time of its intervention only and within the limits of Client's instructions, if any. The Company's sole responsibility is to its Client and this document does not exonerate parties to a transaction from exercising all their rights and obligations under the transaction documents. This document cannot be reproduced except in full, without prior written approval of the Company. Any unauthorized alteration, forgery or falsification of the content or appearance of this document is unlawful and offenders may be prosecuted to the fullest extent of the law. Unless otherwise stated the results shown in this test report refer only to the sample(s) tested and such sample(s) are retained for 30 days only.

Attention: To check the authenticity of testing / inspection report & certificate, please contact us at telephone: (86-755) 8307 1443, or email: CN.Doccheck@sgs.com

SGS-CSTC Shanghai Technical Services Co., Ltd. 11/F, 1st Building, European Industrial Park, No.1 Shunhe South Road, Wusha Section, Daliang Town, Shunde, Foshan, Guangdong, China 528333 t (86-757)22805888 f (86-757)22805858 www.sgs.com.cn
 中国·广东·佛山市顺德区大良街道办事处五沙顺和南路1号欧洲工业园一号楼首层 邮编: 528333 t (86-757)22805888 f (86-757)22805858 e sgs.china@sgs.com

Photo Appendix:



SGS-CSTC Standards Technical Services Co., Ltd.
Shunde Branch Harbin

Unless otherwise agreed in writing, this document is issued by the Company subject to its General Conditions of Service printed overleaf, available on request or accessible at <http://www.sgs.com/en/Terms-and-Conditions.aspx> and, for electronic format documents, subject to Terms and Conditions for Electronic Documents at <http://www.sgs.com/en/Terms-and-Conditions/Terms-e-Documents.aspx>. Attention is drawn to the limitation of liability, indemnification and jurisdiction issues defined therein. Any holder of this document is advised that information contained hereon reflects the Company's findings at the time of its intervention only and within the limits of Client's instructions, if any. The Company's sole responsibility is to its Client and this document does not exonerate parties to a transaction from exercising all their rights and obligations under the transaction documents. This document cannot be reproduced except in full, without prior written approval of the Company. Any unauthorized alteration, forgery or falsification of the content or appearance of this document is unlawful and offenders may be prosecuted to the fullest extent of the law. Unless otherwise stated the results shown in this test report refer only to the sample(s) tested and such sample(s) are retained for 30 days only.

Attention: To check the authenticity of testing / inspection report & certificate, please contact us at telephone: (86-755) 8307 1443, or email: CN.Doccheck@sgs.com

1/F, Building European Industrial Park, No.1 Shunhe South Road, Wusha Section, Daliang Town, Shunde, Foshan, Guangdong, China 528333 t (86-757)22805888 f (86-757)22805858 www.sgs.com.cn
中国·广东·佛山市顺德区大良街道办事处五沙顺和南路1号欧洲工业园一号厂房首层 邮编: 528333 t (86-757)22805888 f (86-757)22805858 e sgs.china@sgs.com

Part 4. Test Conducted (SGS Ref. No.: SL92019313099401TX)

Colour Fastness To Rubbing

(ISO 105-X12:2016; Size of rubbing finger: 16mm dia.)

As Received

	Unit	B	Requirement
Dry Staining	-	4-5	Min.3-4
Wet Staining	-	4-5	Min.3-4

Remark: Grey Scale Rating is based on the 5-step scale of 1 to 5, where 1 is worst and 5 is best.

Colour Fastness To Washing

(ISO 105-C06:2010; Test No.:A2S, Machine wash at 40°C with 4g/L ECE (B) and 1g/L Sodium Perborate with 10 Steel Balls)

	Unit	A	B	Requirement
Change in Shade	-	4-5	4-5	Min.3-4
Staining On Multi-fibre Stripe				Min.3-4
Acetate	-	3-4	4-5	
Cotton	-	4-5	4-5	
Polyamide	-	4	4-5	
Polyester	-	4-5	4-5	
Acrylic	-	4-5	4-5	
Wool	-	4-5	4-5	

Remark: Grey Scale Rating is based on the 5-step scale of 1 to 5, where 1 is worst and 5 is best.



Unless otherwise agreed in writing, this document is issued by the Company subject to its General Conditions of Service printed overleaf, available on request or accessible at <http://www.sgs.com/en/Terms-and-Conditions.aspx> and, for electronic format documents, subject to Terms and Conditions for Electronic Documents at <http://www.sgs.com/en/Terms-and-Conditions/Terms-e-Documents.aspx>. Attention is drawn to the limitation of liability, indemnification and jurisdiction issues defined therein. Any holder of this document is advised that information contained hereon reflects the Company's findings at the time of its intervention only and within the limits of Client's instructions, if any. The Company's sole responsibility is to its Client and this document does not exonerate parties to a transaction from exercising all their rights and obligations under the transaction documents. This document cannot be reproduced except in full, without prior written approval of the Company. Any unauthorized alteration, forgery or falsification of the content or appearance of this document is unlawful and offenders may be prosecuted to the fullest extent of the law. Unless otherwise stated the results shown in this test report refer only to the sample(s) tested and such sample(s) are retained for 30 days only.

Attention: To check the authenticity of testing / inspection report & certificate, please contact us at telephone: (86-755) 8307 1443, or email: CN.Doccheck@sgs.com

Sample Photo



Remark:

1. The statement of conformity in this test report is only based on measured values by the laboratory and does not take their uncertainties into consideration.
2. This test was subcontracted to SGS-CSTC Standards Technical Services Co., Ltd. Guangzhou Branch.



Test result 1. Test conducted: EN 581-1:2017 Outdoor furniture--seating and tables for camping, domestic and contract use—Part 1. General safety requirements.

No. of Sample:

1 piece (Sample #1). For more sample information and pictures, please refer to the following page.

Test and Requirements	Test Results
5 Safety requirements	
<p>5.1 General In order to avoid physical injury when the product is in its intended position of use, all edges and corners shall be rounded, chamfered or otherwise protected. This applies to:</p> <ul style="list-style-type: none"> - Seating: Edges of the seat, back rest and arm rests and any part of the bottom surface of the seat at a distance less than 120 mm from any edge, where a finger can commonly access; - Tables: Table tops, any part of the underside of the top surface at a distance less than 500 mm from any edge below the table, where a knee and/or an arm can commonly access. <p>All other parts shall be free from burrs, sharp edges and sharp points. Movable and adjustable parts shall be designed so that injuries and inadvertent operation are avoided. It shall not be possible for any load bearing part of the furniture to come loose unintentionally. All parts which are lubricated to assist sliding shall be designed to protect users from lubricant stains when in normal use.</p>	<p>PASS</p>
<p>5.2 Tubular components There shall be no accessible holes in the ends of tubular components with a diameter between 7 mm to 12 mm and with a depth more or equal to 10 mm. The bottom of tubular legs in contact with the floor shall be closed or capped, however, holes in them are allowed as long as they are not between 7 and 12 mm.</p>	<p>PASS</p>
5.3 Shear and squeeze points	
<p>5.3.1 Shear and squeeze points when erecting, adjusting and folding away Unless 5.3.2 or 5.3.3 are applicable, shear and squeeze points that are created only during erecting, adjusting or folding away are acceptable providing the user can be assumed to be in control of his/her movements and to be able to cease applying the force immediately on experiencing pain.</p>	<p>N/A</p>
<p>5.3.2 Shear and squeeze points under the influence of powered mechanisms There shall be no accessible shear and squeeze points created by parts of the furniture operated by powered mechanisms, e.g. mechanical springs and gas lifts.</p>	<p>N/A</p>
<p>5.3.3 Shear and squeeze points during use There shall be no accessible shear and squeeze points created by loads applied during normal use. Shear and squeeze points are not acceptable if there is a risk of injury created by the weight of the user during normal movements and actions, e.g. attempting to move the seating by lifting the seat or by adjusting the backrest.</p>	<p>PASS</p>

Remark: N/A – Not applicable; N/R – Not Requested; N/P – Not provided.



Unless otherwise agreed in writing, this document is issued by the Company subject to its General Conditions of Service printed overleaf, available on request or accessible at <http://www.sgs.com/en/Terms-and-Conditions.aspx> and, for electronic format documents, subject to Terms and Conditions for Electronic Documents at <http://www.sgs.com/en/Terms-and-Conditions/Terms-e-Documents.aspx>. Attention is drawn to the limitation of liability, indemnification and jurisdiction issues defined therein. Any holder of this document is advised that information contained hereon reflects the Company's findings at the time of its intervention only and within the limits of Client's instructions, if any. The Company's sole responsibility is to its Client and this document does not exonerate parties to a transaction from exercising all their rights and obligations under the transaction documents. This document cannot be reproduced except in full, without prior written approval of the Company. Any unauthorized alteration, forgery or falsification of the content or appearance of this document is unlawful and offenders may be prosecuted to the fullest extent of the law. Unless otherwise stated the results shown in this test report refer only to the sample(s) tested and such sample(s) are retained for 30 days only.

Attention: To check the authenticity of testing / inspection report & certificate, please contact us at telephone: (86-755) 8307 1443, or email: CN.Doccheck@sgs.com

SGS-CTC (Shunde) Technical Services Co., Ltd.
 Shunde Branch Hatunites

1/F, 1st Building, European Industrial Park, No.1 Shunhe South Road, Wusha Section, Daliang Town, Shunde, Foshan, Guangdong, China 528333 t (86-757)22805888 f (86-757)22805858 www.sgs.com.cn
 中国·广东·佛山市顺德区大良街道办事处五沙顺和南路1号欧洲工业园一号楼首层 邮编: 528333 t (86-757)22805888 f (86-757)22805858 e sgs.china@sgs.com

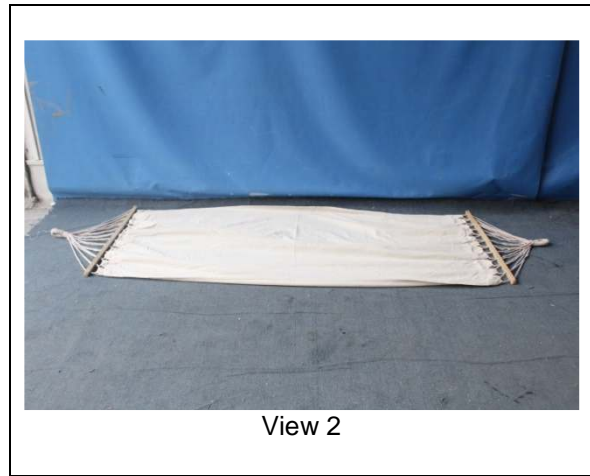
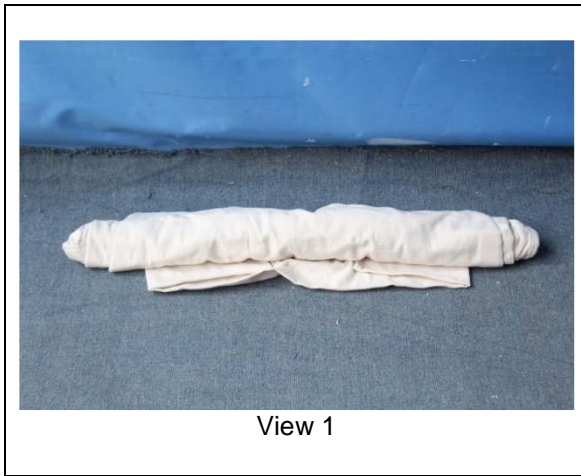
SAMPLE INFORMATION AND PICTURES

Weight: 1.35 kg

Overall Dimensions: 2780 mm L x 780 mm W

Other Dimensions: /

Sample as Received



Remark: According to client's statements, the tested Style/Item No. 841765 is identical to the Style/Item No. as stated in "Client Reference Information" column on the first page.

End of Report

