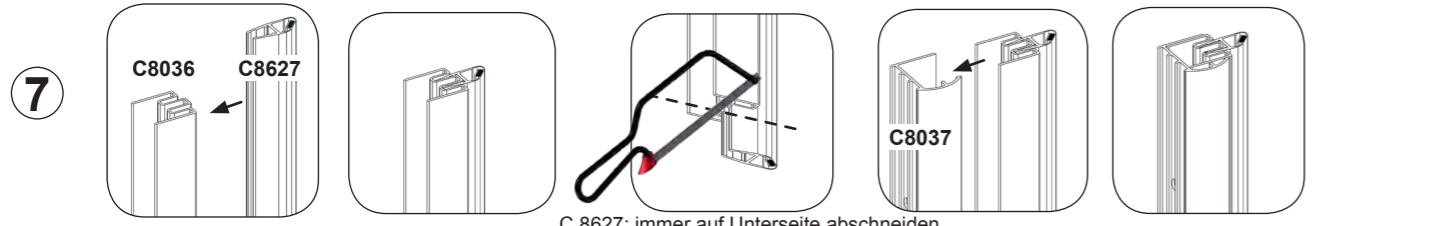
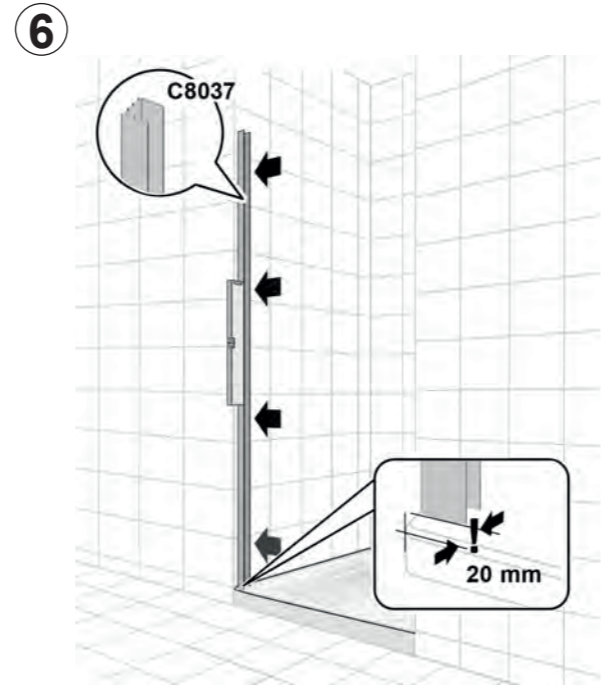
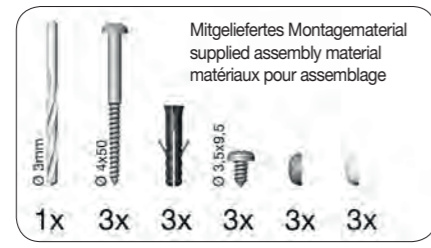
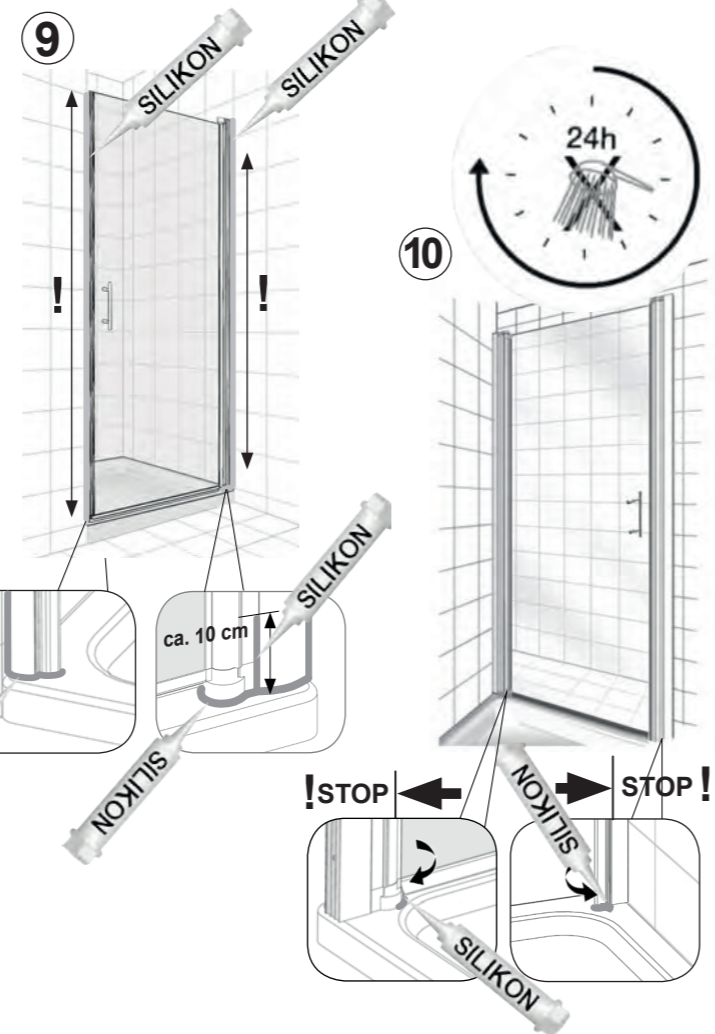
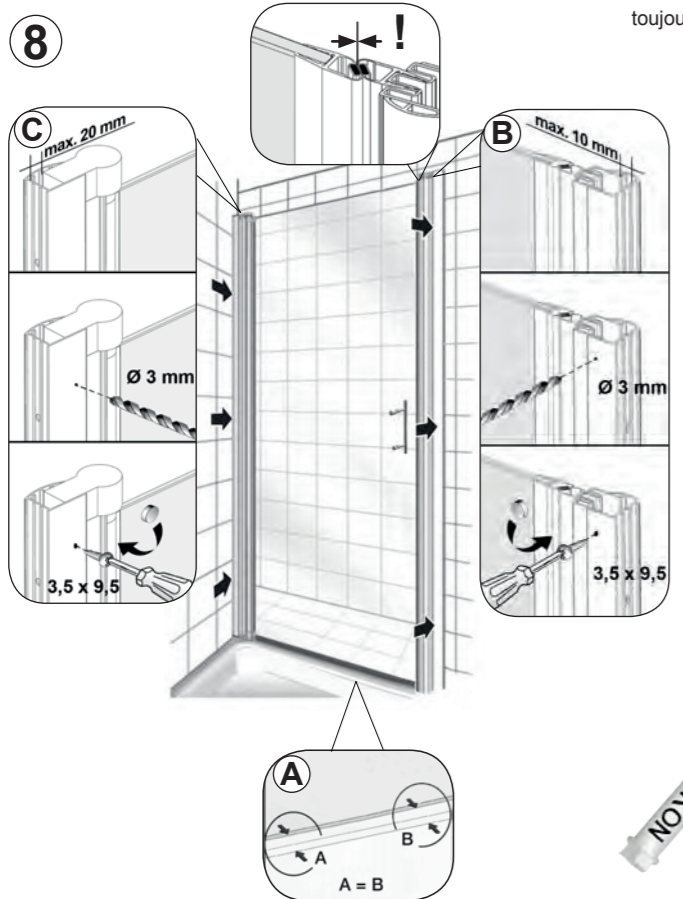


Modell	Nischenmaß Niche mesure Mesure de niches (mm)
S1 / W1 / B1	735 - 765
S2 / W2 / B2 / S52 / B52	785 - 815
S3 / W3 / B3 / S53 / B53	885 - 915
S4 / W4 / B4 / S54 / B54	985 - 1015

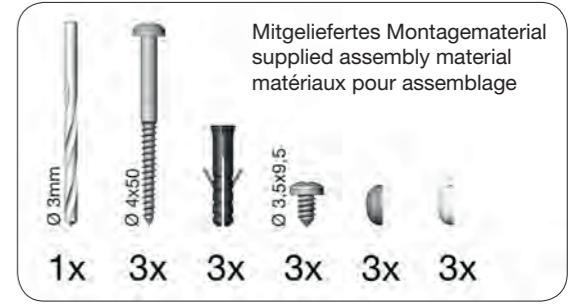
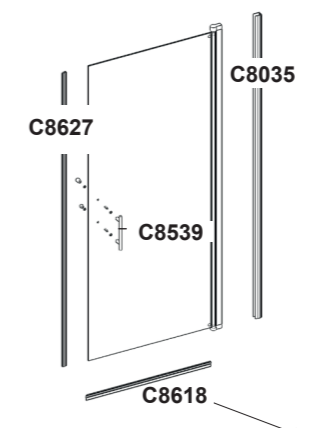


C 8627: immer auf Unterseite abschneiden
always cut from the bottom
toujours couper par le bas

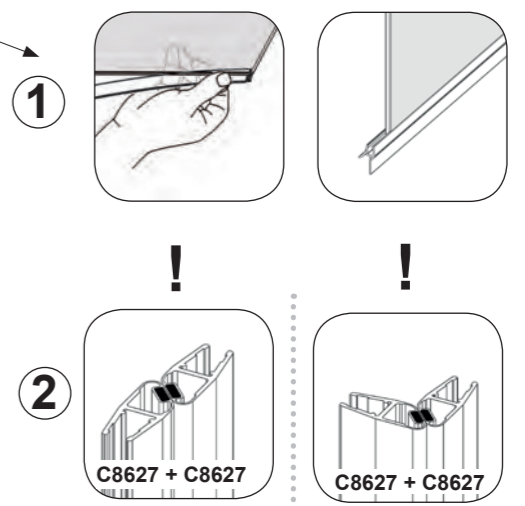
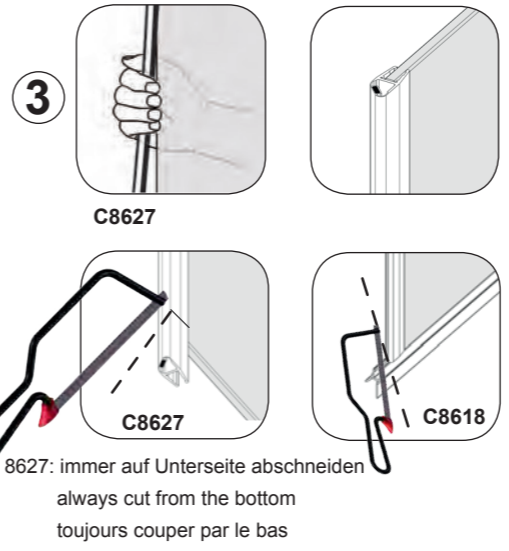


Camargue®
VARIO

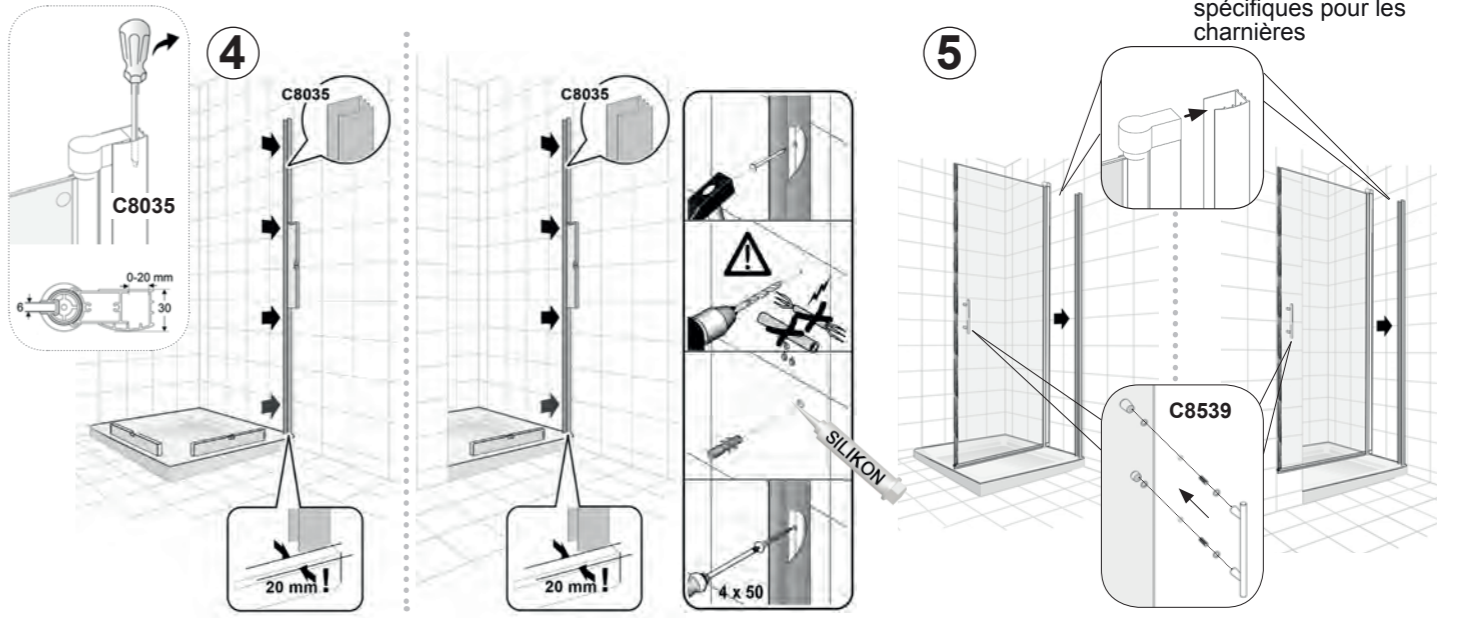
- S1 / W1 / B1
- S2 / W2 / B2
- S3 / W3 / B3
- S4 / W4 / B4
- S52/B52
- S53/B53
- S54/B54



Montageanleitung für Rechtsanschlag
(Linksanschlag = spiegelbildlich)
Assembly instructions for right hand mounting
(left hand mounting = mirror inverted)
instruction d'assemblage pour charnière à droite
(à gauche = inversé lateralement)



5 S52/B52 / S53/B53 / S54/B54
siehe separate Montageanleitung für Scharniere
see separate instructions for mounting of hinges
voir les instructions de montage spécifiques pour les charnières



Achtung! Gläser niemals ungeschützt auf den Boden stellen.
Verletzung der Glaskante führt zu Glasbruch.
Caution! Never put glass walls on the floor without protection.
Damaging the glass edges results in breaking of the glass.
Attention! Jamais plaquer des parois de douche en verre au sol sans protection. Des verres endommagés casseront.

S1 / W1 / B1
S2 / W2 / B2
S3 / W3 / B3
S4 / W4 / B4
+ S52/B52 / S53/B53 / S54/B54

Modell	Duschlassen-Einbaumaß Shower tray installation dimensions Dimensions de montage de douche (mm)	Bodengleicher Aufbau Ground level installation Pose au sol dt (mm)
S1 / W1 / B1	735 - 755	695 - 715
S2 / W2 / B2 / S52/B52	785 - 805	745 - 765
S3 / W3 / B3 / S53/B53	885 - 905	845 - 865
S4 / W4 / B4 / S54/B54	985 - 1005	945 - 965

6
 C8627
 C8539
 C8035
 C8618

Mitgeliefertes Montagematerial
 supplied assembly material
 matériaux pour assemblage

1x 3x 3x 3x 3x 3x

C 8627: immer auf Unterseite abschneiden
 always cut from the bottom
 toujours couper par le bas

S5 / W5 / B5 ; S6 / W6 / B6
S7 / W7 / B7 ; S8 / W8 / B8
S13P / S14P

Modell	Duschlassen-Einbaumaß Shower tray installation dimensions Dimensions de montage de douche (mm)	Bodengleicher Aufbau Ground level installation Pose au sol dt (mm)
S5 / W5 / B5	735 - 755	695 - 715
S6 / W6 / B6	785 - 805	745 - 765
S7 / W7 / B7	885 - 905	845 - 865
S8 / W8 / B8	985 - 1005	945 - 965
S13P	1185 - 1205	1145 - 1165
S14P	1385 - 1405	1345 - 1365

6
 C 8103
 C 8149
 C 8150
 C 4198-1000
 C 8627
 C 8852

Mitgeliefertes Montagematerial
 supplied assembly material
 matériaux pour assemblage

1x 3x 3x 2x

C 8627: immer auf Unterseite abschneiden
 always cut from the bottom
 toujours couper par le bas

6
 C 8103
 C 8852
 4 x 50
 SILIKON

7
 E
 F max. 20 mm
 D
 C8539
 A max. 20 mm
 B A=B
 C ca. 34 mm

8
 C max. 20 mm
 B !
 C max. 20 mm
 Ø 3 mm
 3,5 x 9,5
 A A=B
 A A=B

7
 A C8627
 B
 C
 G C 8649
 H
 D max. 20 mm
 E A=B
 I max. 20 mm
 F ca. 34 mm

8
 C max. 20 mm
 B !
 C max. 20 mm
 Ø 3 mm
 3,5 x 9,5
 A A=B
 C 8650
 A A=B

9
 NOXITIS
 SILIKON
 ca. 10 cm
 ca. 10 cm

10
 24h
 !STOP
 SILIKON
 NOXITIS

9
10
 C 4198-1000
 ca. 200 mm
 SILIKON
 ca. 10 cm

11
 24h
 !STOP
 SILIKON