

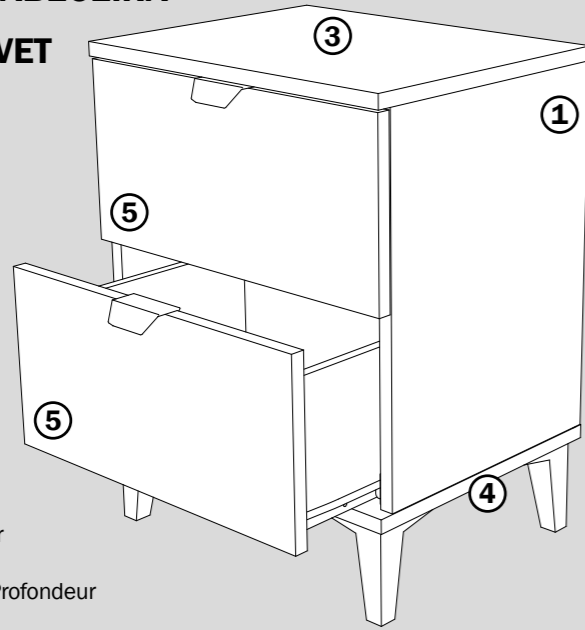
MESILLA

MESINHA DE CABECEIRA
NIGHT TABLE
TABLE DE CHEVET

2 Cajones
2 Gavetas
2 Drawers
2 Tiroirs

K-913

Alto: 561mm
Altura - Height - Hauteur
Ancho: 430mm
Largura - Width - Largeur
Fondo: 340mm
Profundidade - Depth - Profondeur



1 Costado derecho 420x322x16
Lateral Direito - Right side - Côté droit



2 Costado izquierdo 420x322x16
Lado Interior - Left side - Côte gauche



3 Tapa 432x340x16
Superior - Top - Toit



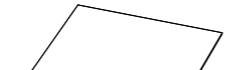
4 Fondo 432x340x16
Bottom - Tablette du Bas - Inferior



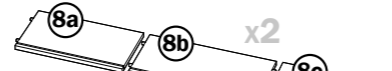
5 Frente de Cajón 426x205x16
Frente da Gaveta - Drawer - Front du tiroir



6 Fondo de Cajón 360x303x3
Gaveta - Drawer bottom - Fond du tiroir

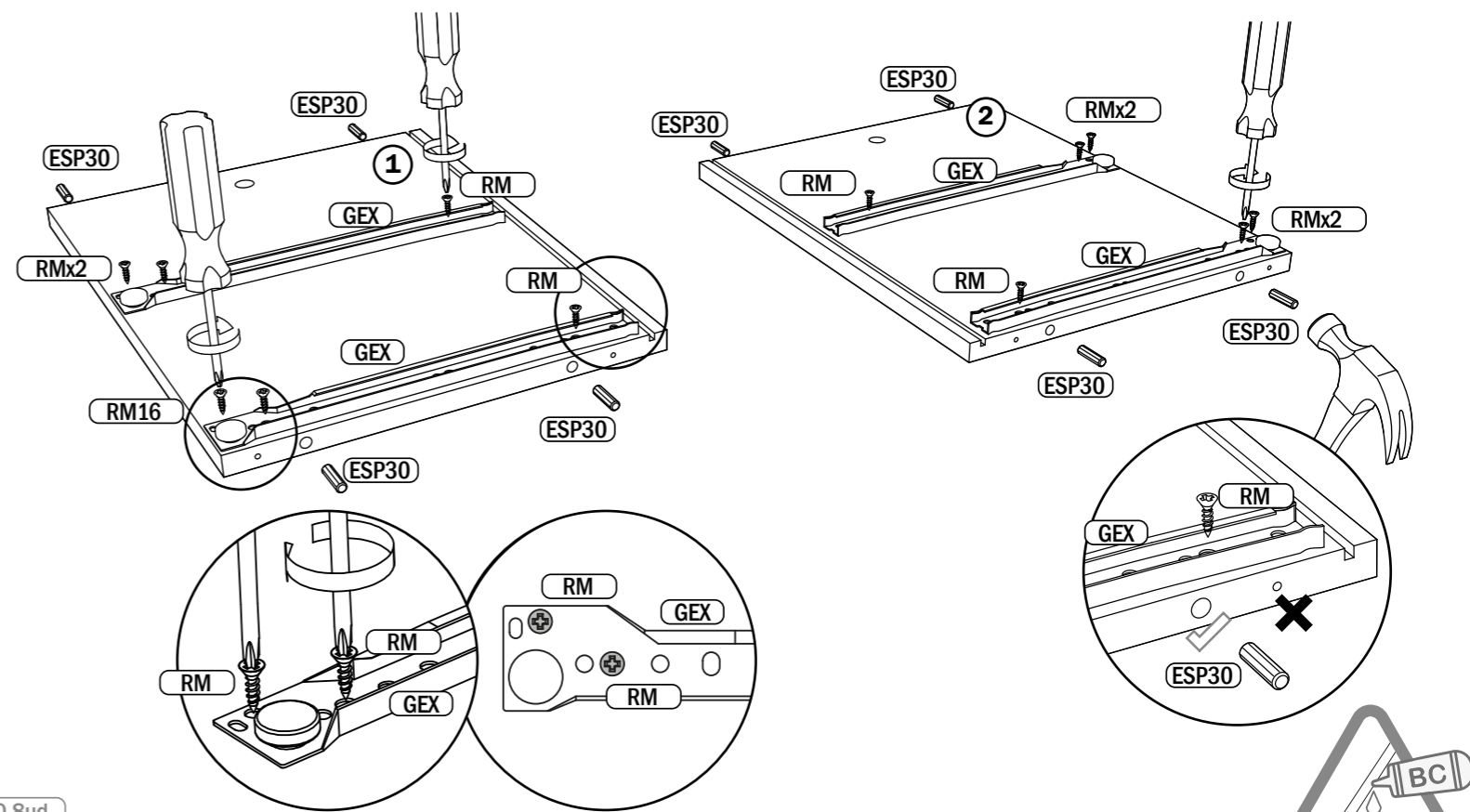


7 Trasera 429x406x3
Painel Traseiro - Back panel - Panneau D'Arrière



8 Cajón (300x348x300)x160
Gaveta - Drawer - Tiroir

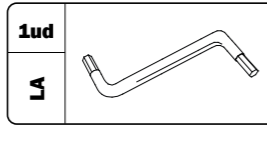
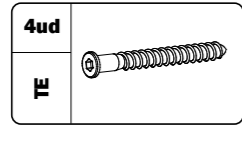
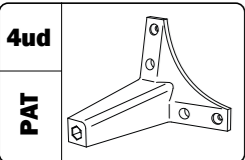
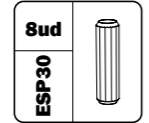
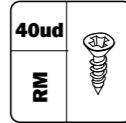
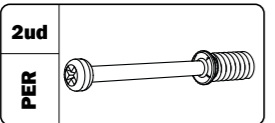
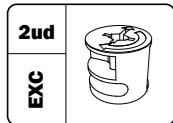
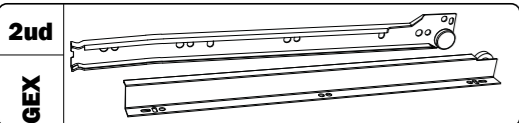
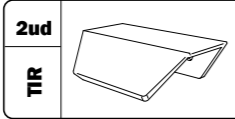
1



ESP30 8ud
GEX (A) 4ud
RM16 12ud

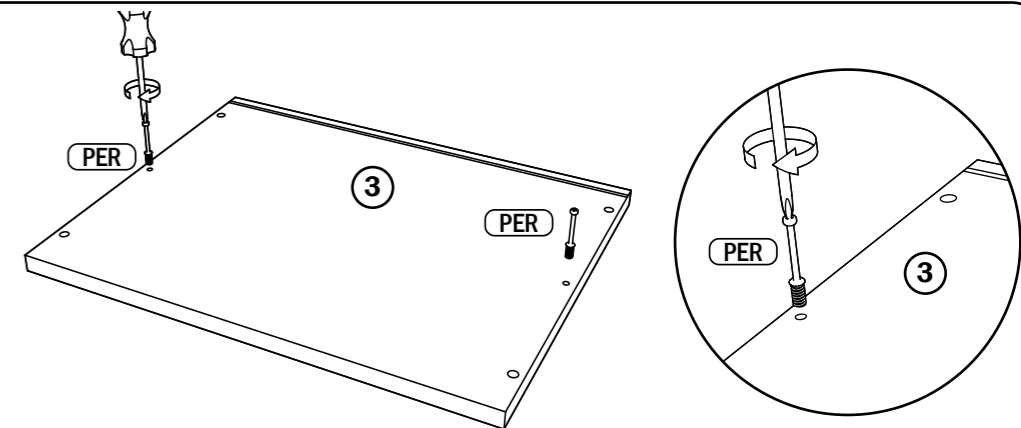
BOLSA DE HERRAJES

COMPOZIÇÃO DE FERRAGENS
HARDWARE BAG
SAC MATÉRIEL



ES. No ingerir.
PT. Não ingerir.
EN. Do not swallow.
FR. Ne pas ingérer.
ES. Agitar antes de su uso.
PT. Agite antes de usar.
EN. Shake before use.
FR. Agiter avant utilisation.

2



PER 2ud

ADVERTENCIAS DE MONTAJE

INDICAÇÕES DE MONTAGEM
ASSEMBLY INFORMATION
AVERTISSEMENTS D'ASSEMBLAGE

ES. Montaje del mueble sobre una superficie de protección.
PT. Monte os móveis em uma superfície protetora.
EN. Mount the furniture on a protective surface.
FR. Montez le meuble sur une surface de protection.



ES. Material necesario para el montaje del mueble.
PT. Material para o qual você deve usar montagem.
EN. Material that you have to use for assembly.
FR. Matériel que vous devez utiliser pour l'assemblage.



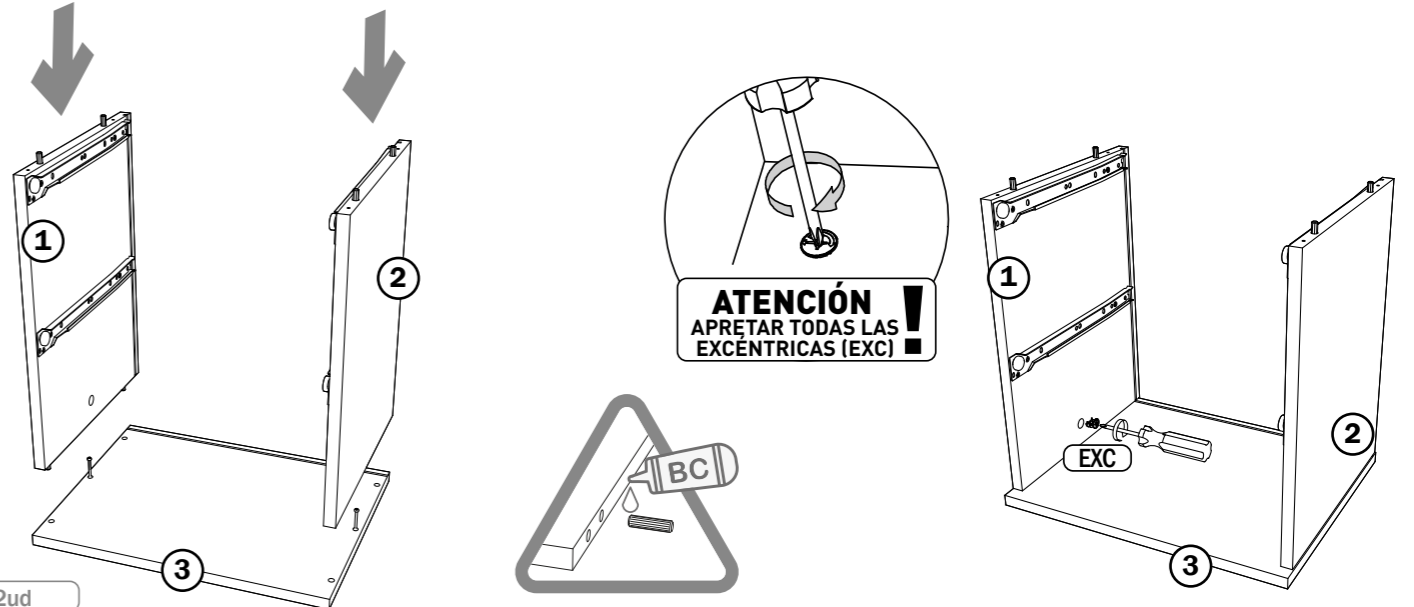
ES. El montaje del mueble deberá realizarse siguiendo las instrucciones del fabricante, en caso contrario, puede haber riesgo de seguridad por caída o vuelco, que pueden provocar lesiones graves, por lo que deberán seguirse las siguientes instrucciones de seguridad:
- Evite poner objetos pesados sobre el producto.
- Evite que los niños se apoyen en los cajones o estantes.
- Es recomendable poner los objetos más pesados en la parte inferior del mueble.

PT. A montagem do mobiliário deve ser efectuada de acordo com as instruções do fabricante, caso contrário pode haver um risco de segurança devido a queda ou tombamento, que pode causar ferimentos graves, pelo que devem ser seguidas as seguintes instruções de segurança:
- Evite colocar objetos pesados no produto.
- Impede que as crianças se inclinem em gavetas ou prateleiras.
- É aconselhável colocar objetos pesados na parte inferior do gabinete.

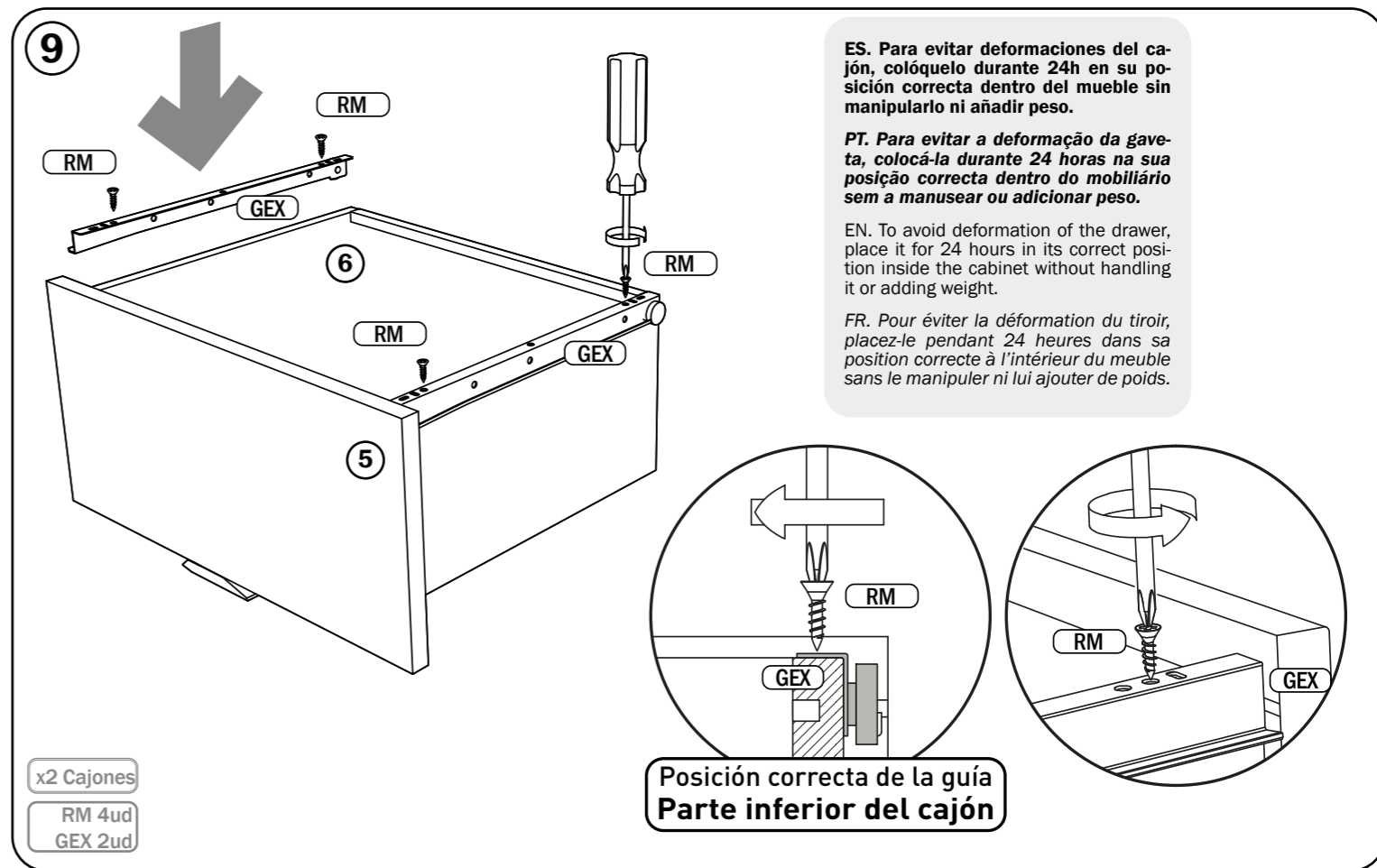
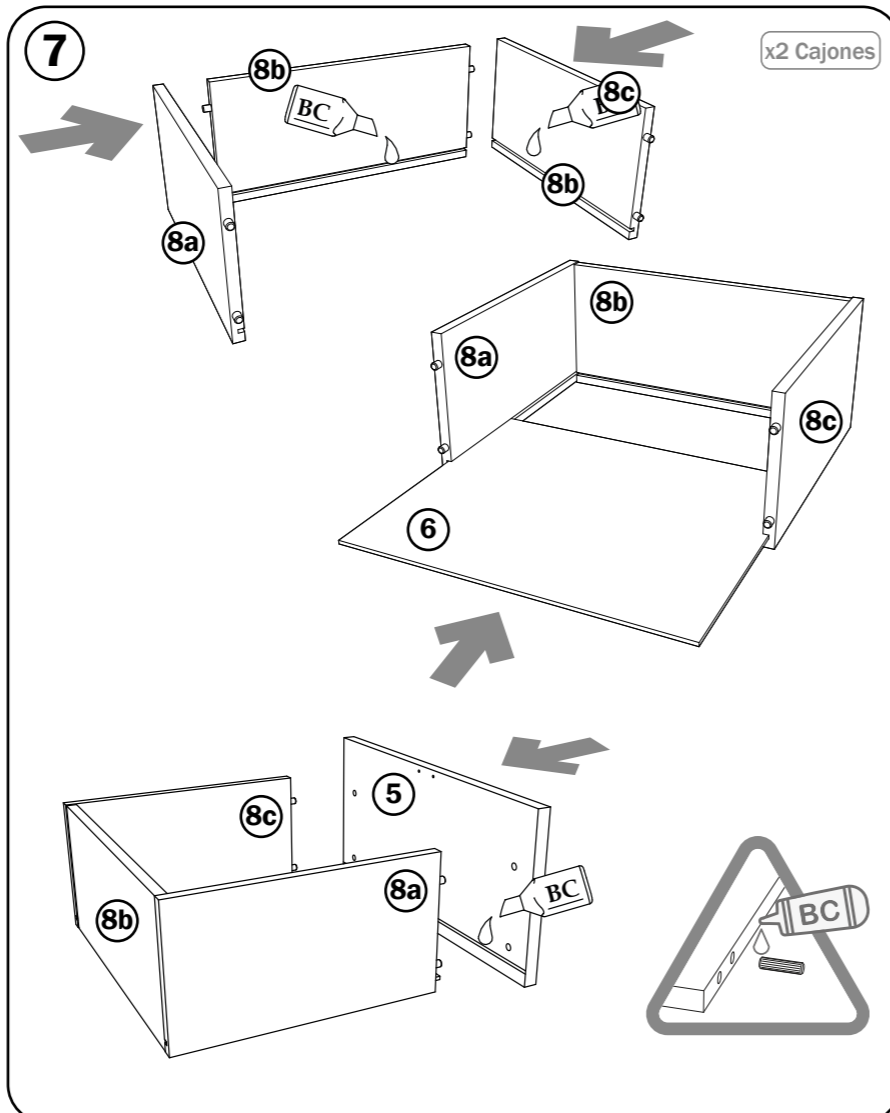
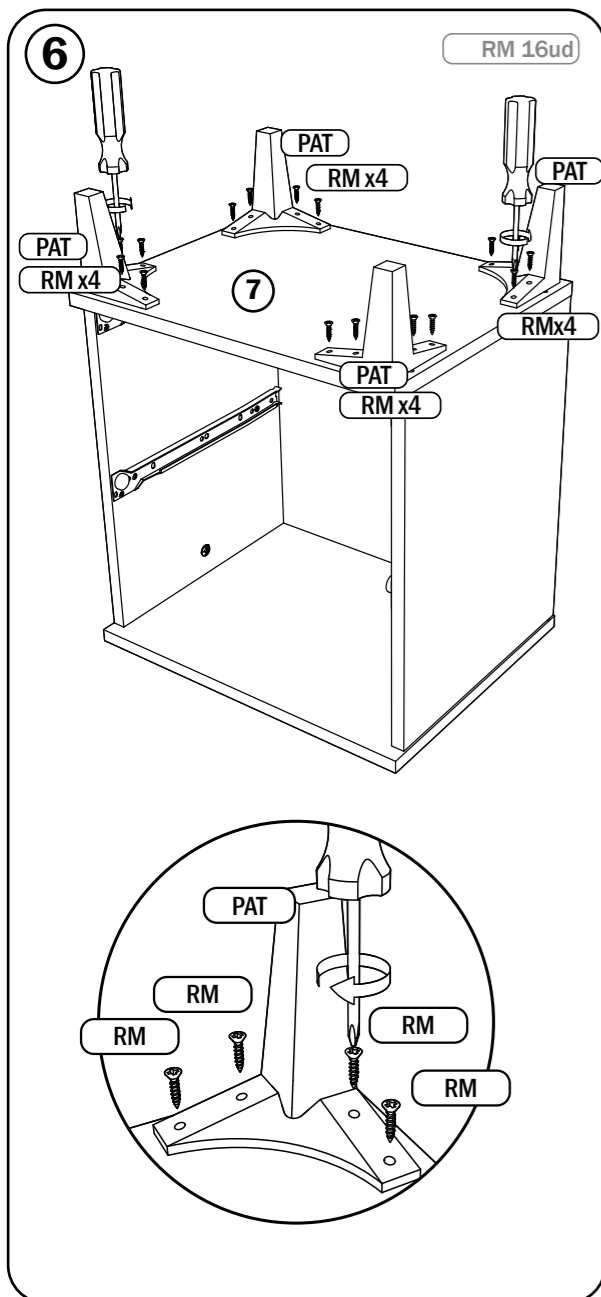
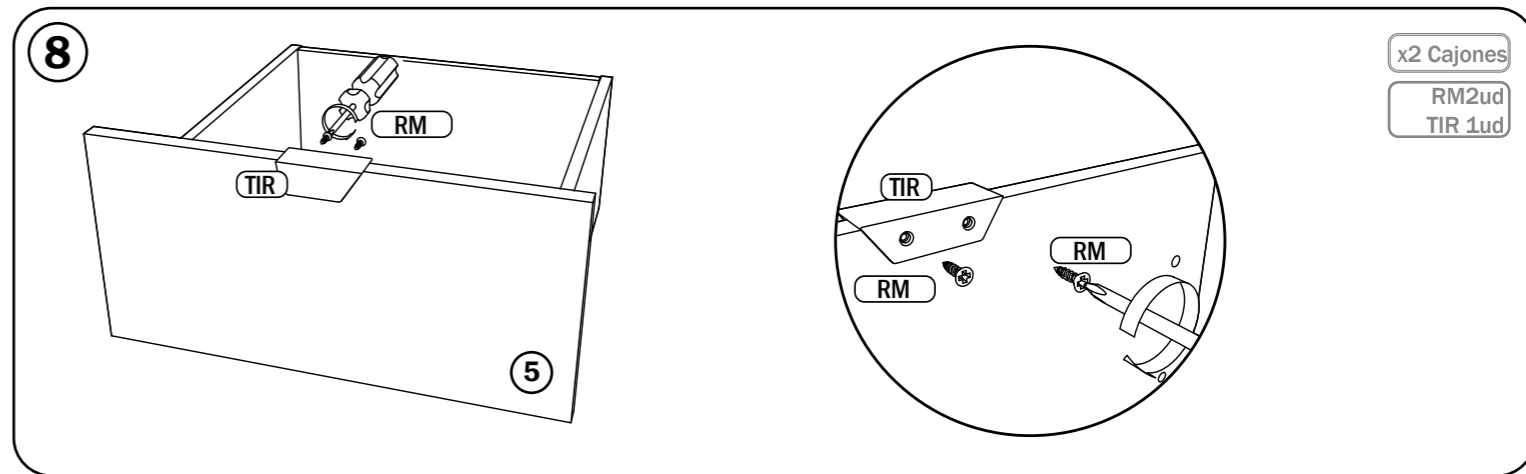
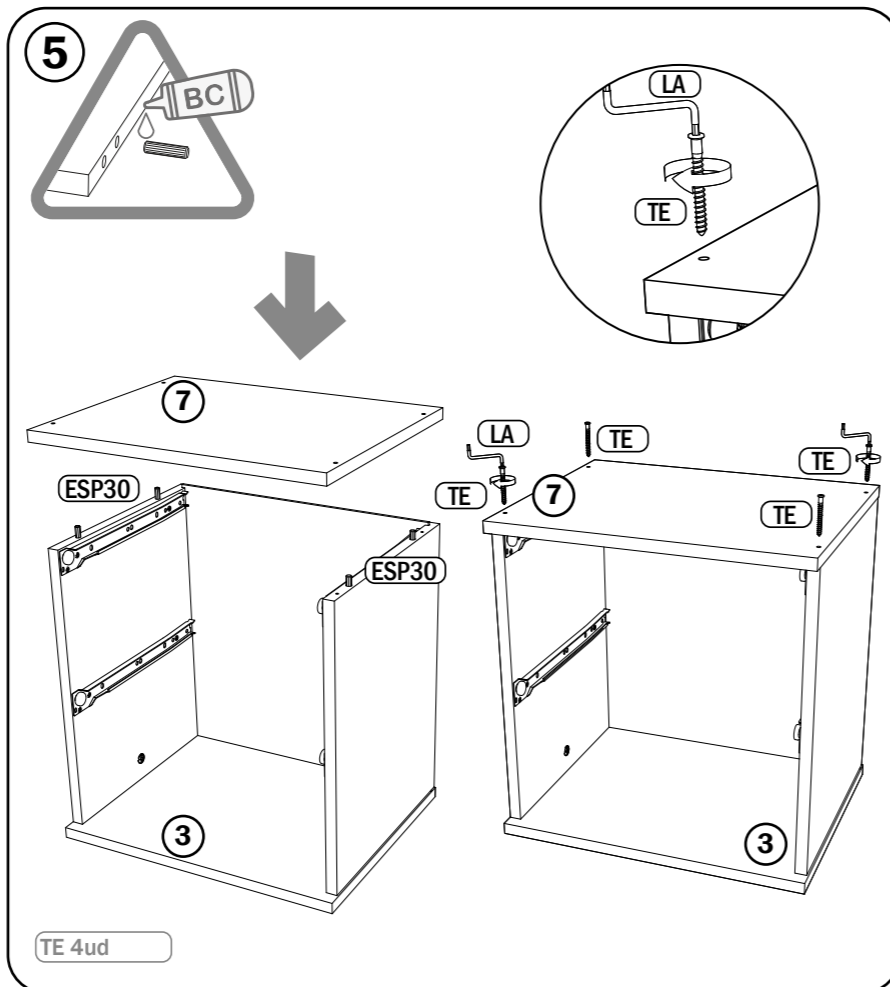
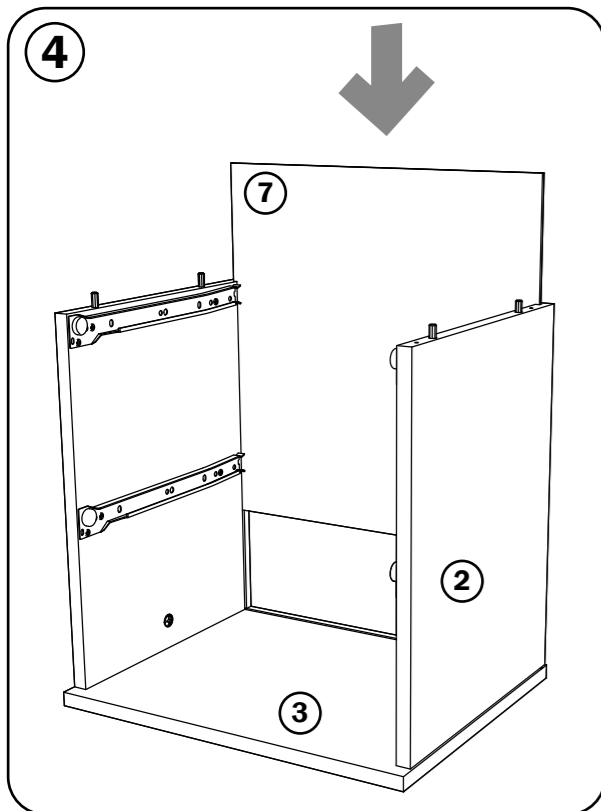
EN. The assembly of the furniture must be carried out according to the manufacturer's instructions, otherwise there may be a safety risk due to falling or tipping over, which can cause serious injuries, therefore the following safety instructions must be followed:
- Avoid putting heavy objects on the product.
- Prevents children from leaning on drawers or shelves.
- It is advisable to put heavy objects on the bottom of the cabinet.

FR. Le montage des meubles doit être effectué conformément aux instructions du fabricant, sinon il peut y avoir un risque de sécurité dû à une chute ou un renversement, qui peut causer des blessures graves, c'est pourquoi les instructions de sécurité suivantes doivent être respectées:
- Éviter de poser des objets lourds sur le produit
- Empêchez les enfants de s'appuyer sur les tiroirs ou les étagères.
- Il est conseillé de placer les objets lourds au fond de l'armoire.

3



EXC 2ud



ES. Para evitar deformaciones del cajón, colóquelo durante 24h en su posición correcta dentro del mueble sin manipularlo ni añadir peso.

PT. Para evitar a deformação da gaveta, colocá-la durante 24 horas na sua posição correta dentro do mobiliário sem a manusear ou adicionar peso.

EN. To avoid deformation of the drawer, place it for 24 hours in its correct position inside the cabinet without handling it or adding weight.

FR. Pour éviter la déformation du tiroir, placez-le pendant 24 heures dans sa position correcte à l'intérieur du meuble sans le manipuler ni lui ajouter de poids.

