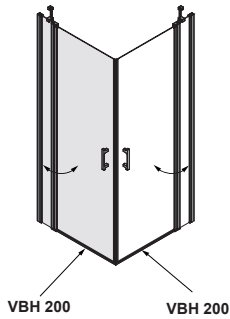
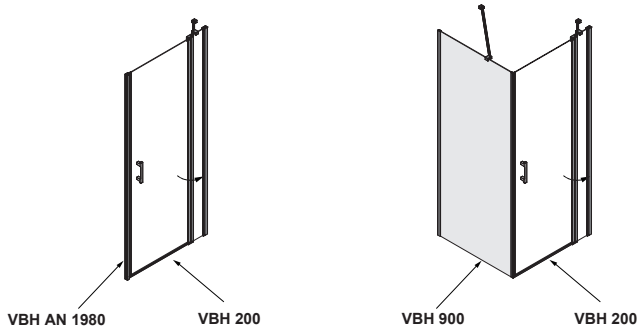




Achtung ! Gläser niemals ungeschützt auf den Boden stellen.
Verletzung der Glaskante führt zu Glasbruch.

Caution ! Never put glass walls on the floor without protection.
Damaging the glass edges results in breaking of the glass.

Attention ! Jamais placer des parois de douche en verre au sol sans protection. Des verres endommagés casseront.



VBH200

VBH900

VBHAN1980

← →	ArtNr.	← →	ArtNr.	ArtNr.
800 mm	31972756	800 mm	31972367	31972394
900 mm	31972765	900 mm	31972376	
1000 mm	31972774	1000 mm	31972385	
		1200 mm	31998433	

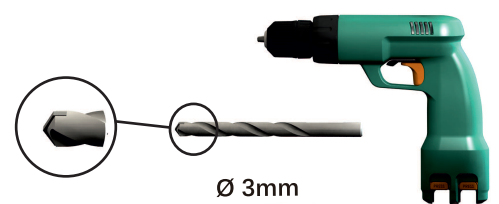
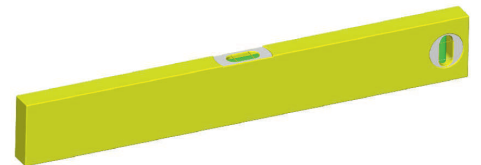
Die abgebildeten Formen der Profile und Griffe dienen der schematische Darstellung und entsprechen nicht dem tatsächlichen Lieferumfang!

The shapes of the profiles and handles shown are schematic representations and do not correspond to the actual scope of delivery!

Mitgeliefertes Montagmaterial
supplied assembly material
matériaux pour assemblage



Zum Aufbau benötigen Sie
for mouting you need
pour l'installation il vous faut



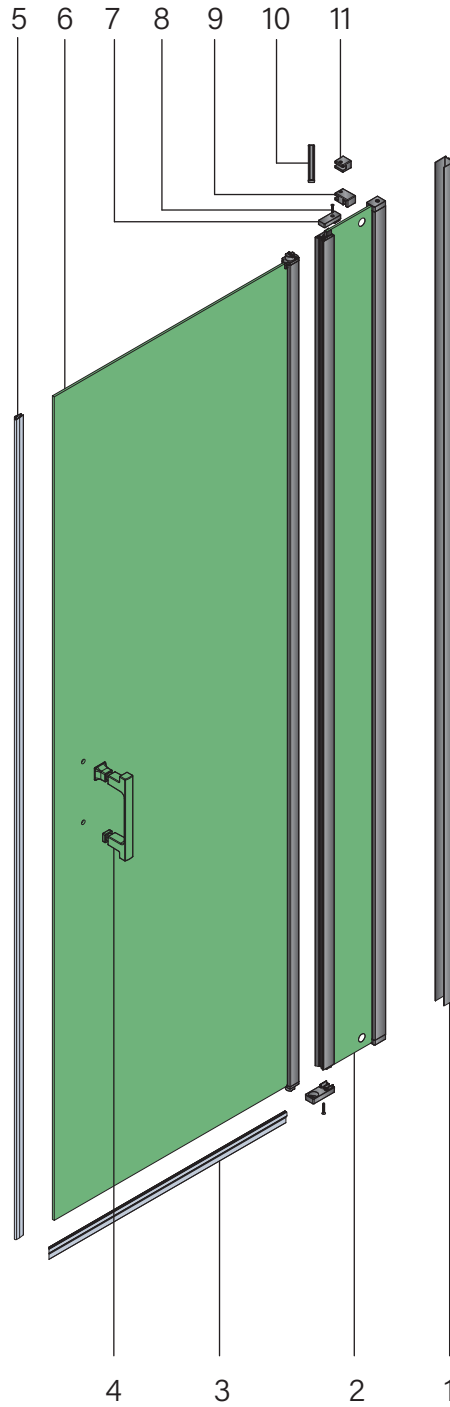
VBH 200



Achtung ! Gläser niemals ungeschützt auf den Boden stellen.
Verletzung der Glaskante führt zu Glasbruch.

Caution ! Never put glass walls on the floor without protection.
Damaging the glass edges results in breaking of the glass.

Attention ! Jamais plaçer des parois de douche en verre au sol sans protection. Des verres endommagés casseront.



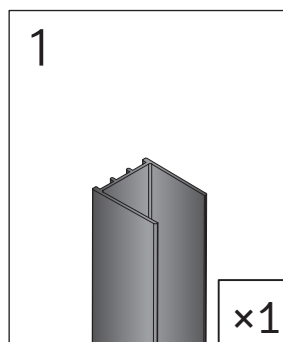
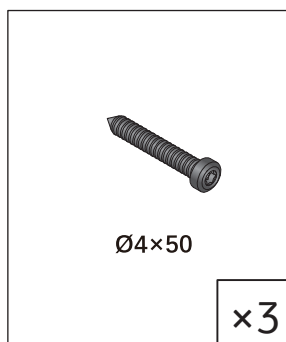
Nr.	Art.-Nr.
1	G 8142
2	G 4651
3	G 8623
4	G 4215
5	G 8667
6	G 4650
)	G 8923
*	-
+	-
#"	-
##	-



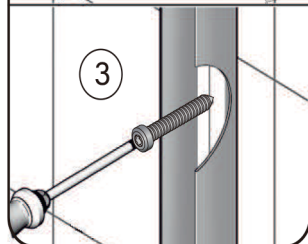
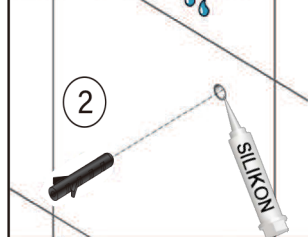
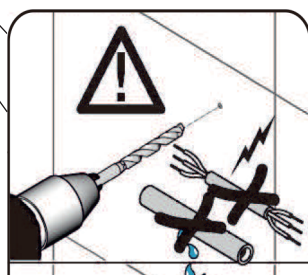
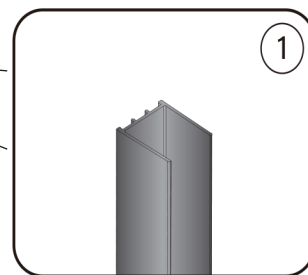
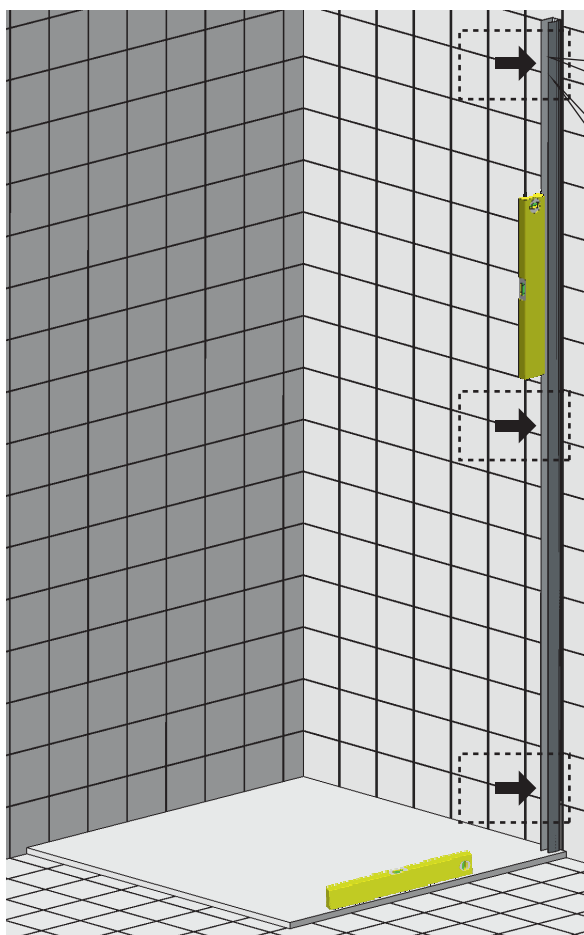
Achtung ! Gläser niemals ungeschützt auf den Boden stellen.
Verletzung der Glaskante führt zu Glasbruch.

Caution ! Never put glass walls on the floor without protection.
Damaging the glass edges results in breaking of the glass.

Attention ! Jamais plaçer des parois de douche en verre au sol sans protection. Des verres endommagés casseront.



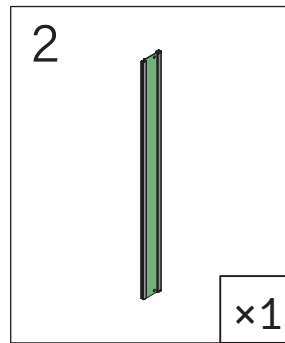
1



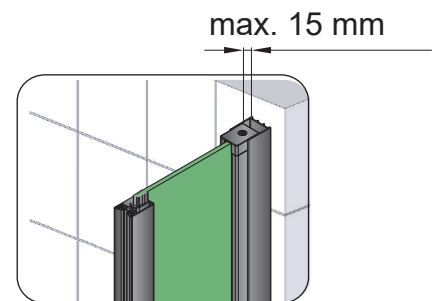
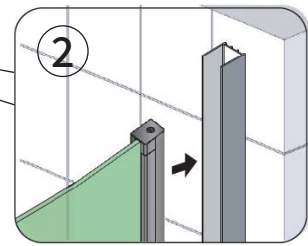
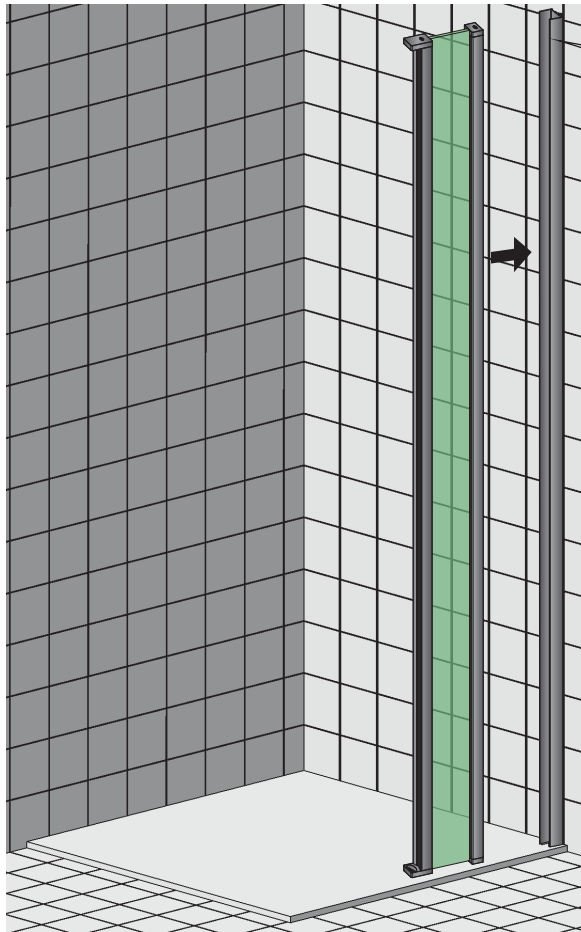
Montageanleitung für Rechtsanschlag
(Linksanschlag = spiegelbildlich)
Assembly instructions for righthand mounting
(left hand mounting = mirror inverted)
Instruction d'assemblage pour charnière à droite
(à gauche = inversé latéralement)



Achtung ! Gläser niemals ungeschützt auf den Boden stellen.
Verletzung der Glaskante führt zu Glasbruch.
Caution ! Never put glass walls on the floor without protection.
Damaging the glass edges results in breaking of the glass.
Attention ! Jamais placer des parois de douche en verre au sol sans
protection. Des verres endommagés casseront.



②

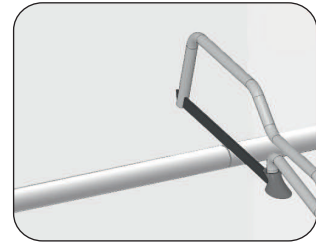




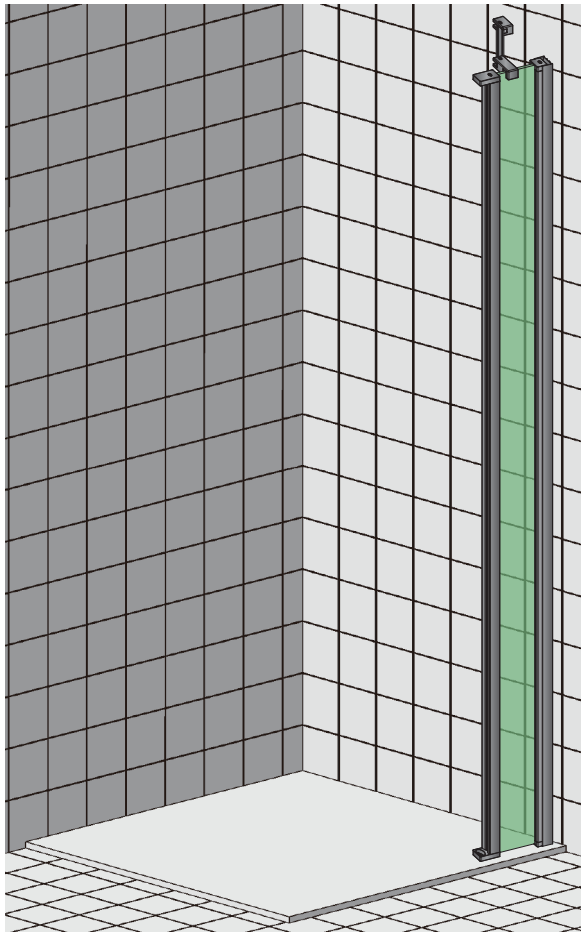
Achtung ! Gläser niemals ungeschützt auf den Boden stellen.
Verletzung der Glaskante führt zu Glasbruch.

Caution ! Never put glass walls on the floor without protection.
Damaging the glass edges results in breaking of the glass.

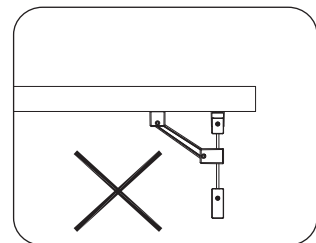
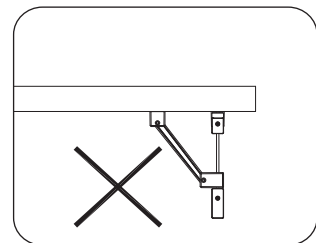
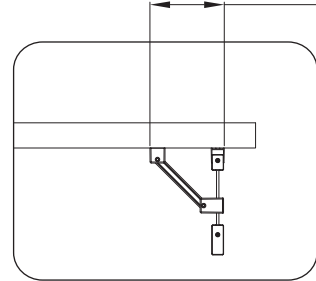
Attention ! Jamais placer des parois de douche en verre au sol sans
protection. Des verres endommagés casseront.



3



145.00

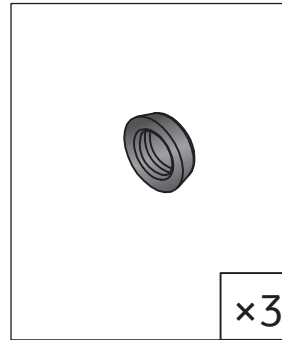




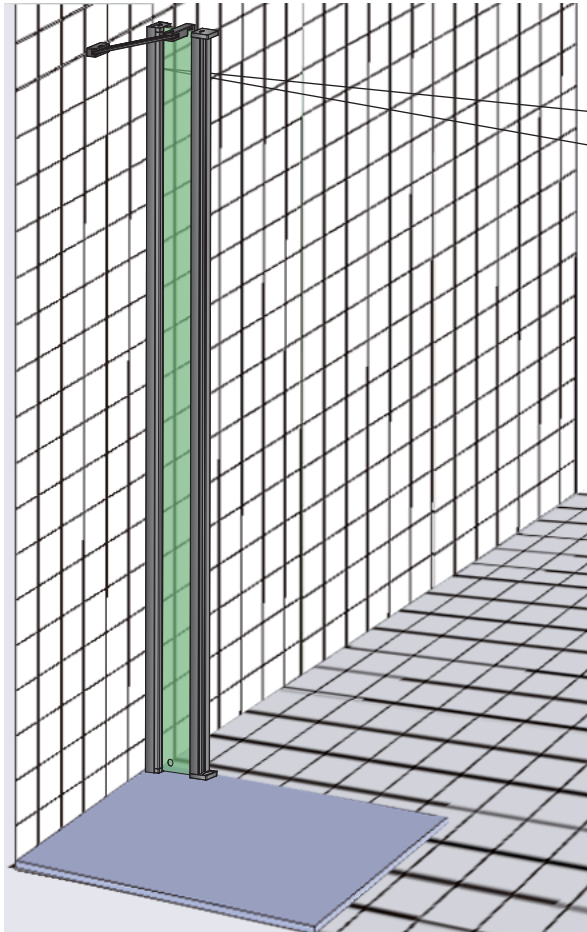
Achtung ! Gläser niemals ungeschützt auf den Boden stellen.
Verletzung der Glaskante führt zu Glasbruch.

Caution ! Never put glass walls on the floor without protection.
Damaging the glass edges results in breaking of the glass.

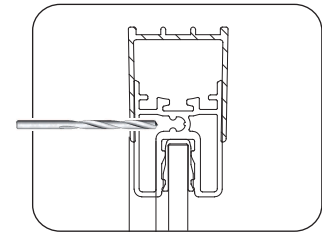
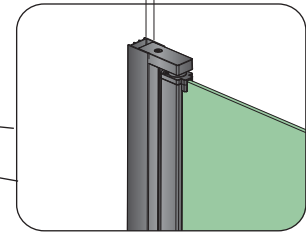
Attention ! Jamais plaçer des parois de douche en verre au sol sans
protection. Des verres endommagés casseront.



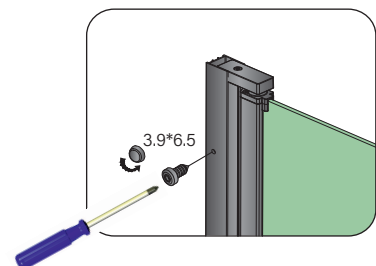
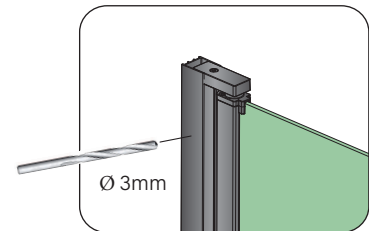
4



max. 15 mm



max 6,5mm

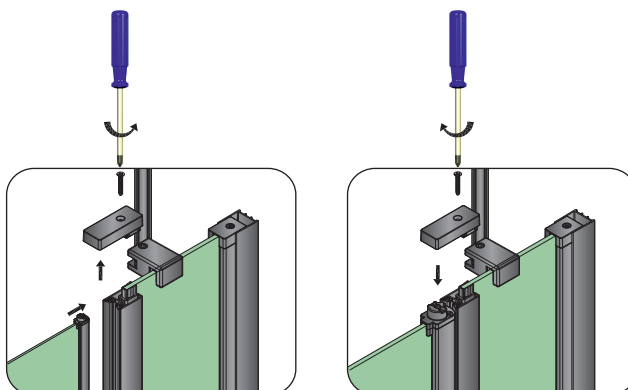




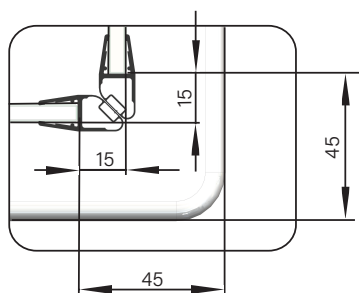
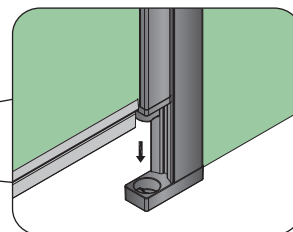
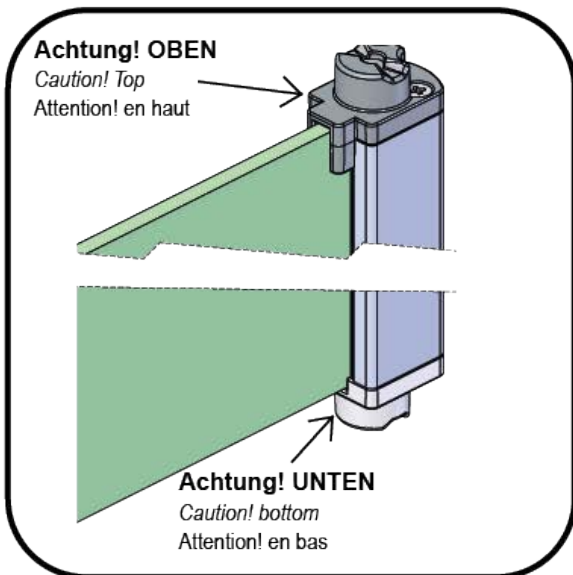
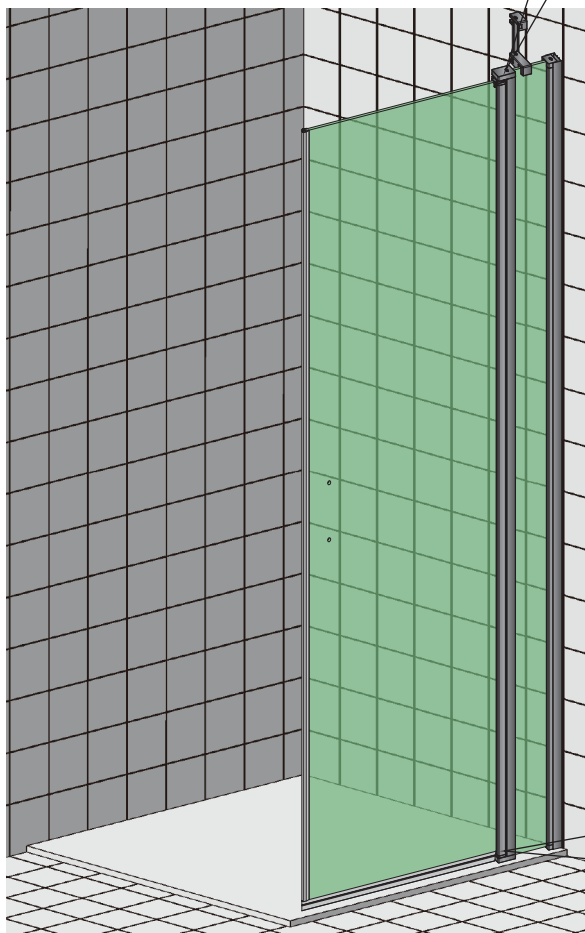
Achtung ! Gläser niemals ungeschützt auf den Boden stellen.
Verletzung der Glaskante führt zu Glasbruch.

Caution ! Never put glass walls on the floor without protection.
Damaging the glass edges results in breaking of the glass.

Attention ! Jamais placer des parois de douche en verre au sol sans protection. Des verres endommagés casseront.



5



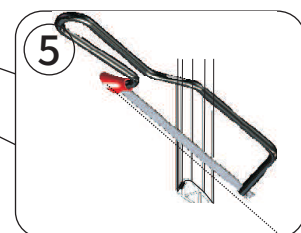
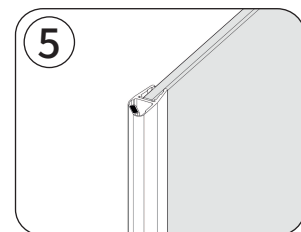
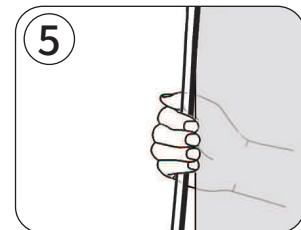
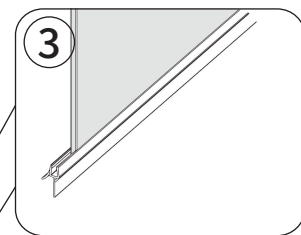
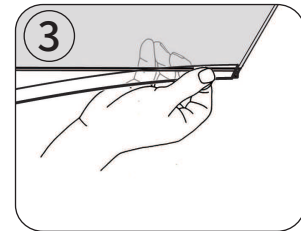


Achtung ! Gläser niemals ungeschützt auf den Boden stellen.
Verletzung der Glaskante führt zu Glasbruch.

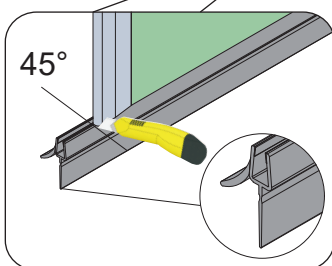
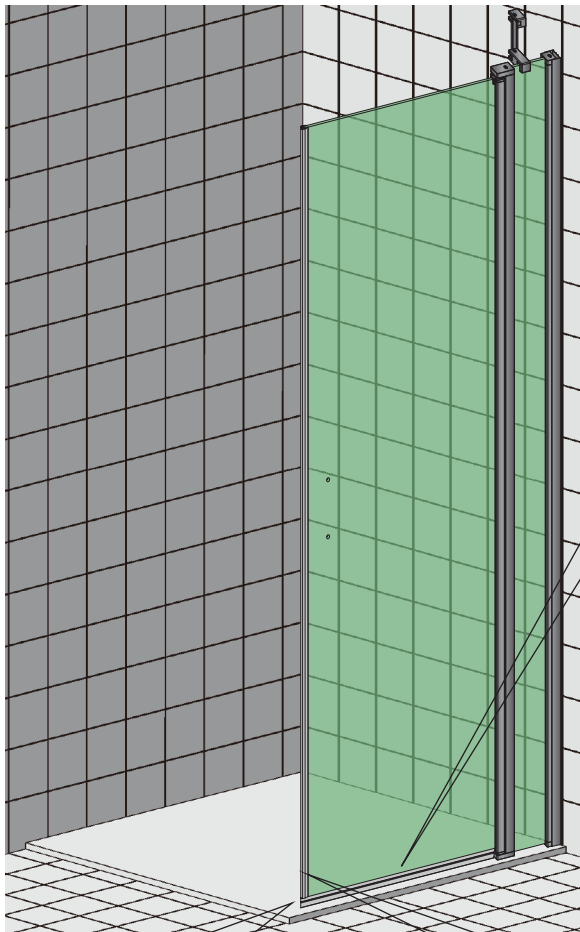
Caution ! Never put glass walls on the floor without protection.
Damaging the glass edges results in breaking of the glass.

Attention ! Jamais placer des parois de douche en verre au sol sans protection. Des verres endommagés casseront.

- ! Magnetprofil G8627 nur unten kürzen.
- ! Magnet profile G8627 only shorten at bottom
- ! Profilé magnétique accourcier au bout au-dessous seulement.



6



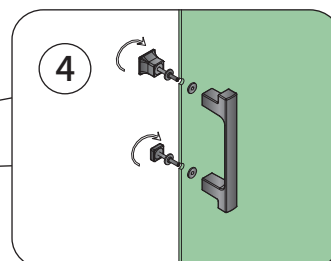
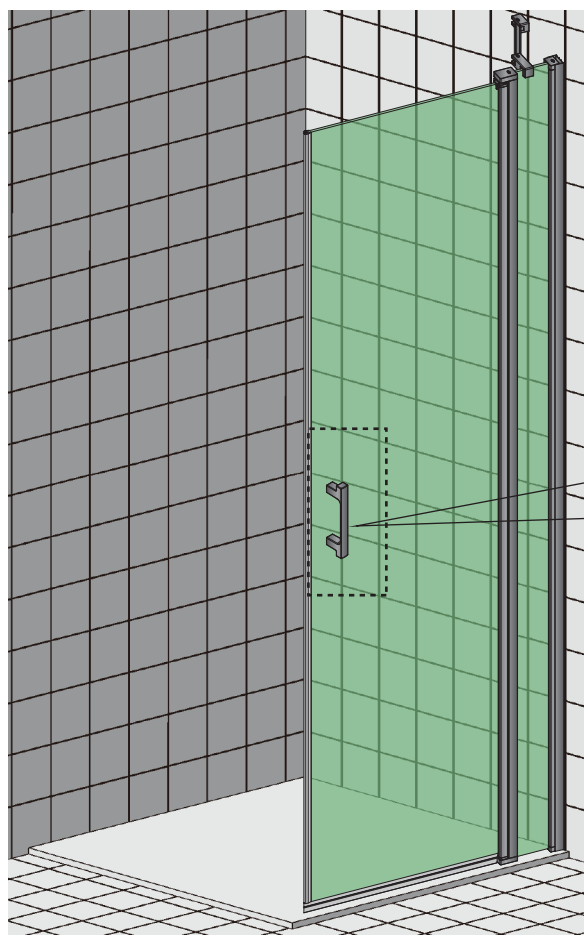


Achtung ! Gläser niemals ungeschützt auf den Boden stellen.
Verletzung der Glaskante führt zu Glasbruch.

Caution ! Never put glass walls on the floor without protection.
Damaging the glass edges results in breaking of the glass.

Attention ! Jamais placer des parois de douche en verre au sol sans
protection. Des verres endommagés casseront.

7





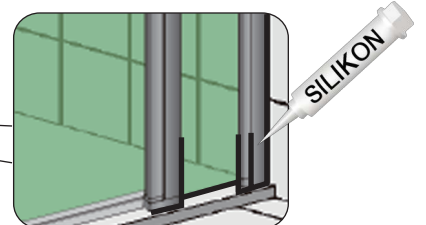
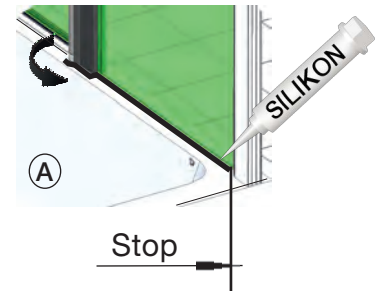
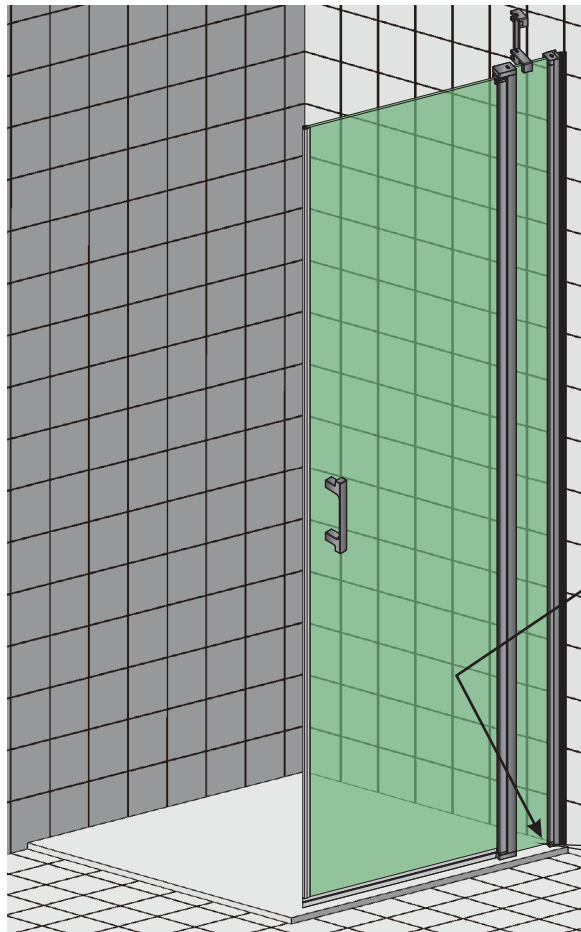
Achtung ! Gläser niemals ungeschützt auf den Boden stellen.
Verletzung der Glaskante führt zu Glasbruch.

Caution ! Never put glass walls on the floor without protection.
Damaging the glass edges results in breaking of the glass.

Attention ! Jamais plaçer des parois de douche en verre au sol sans
protection. Des verres endommagés casseront.



8

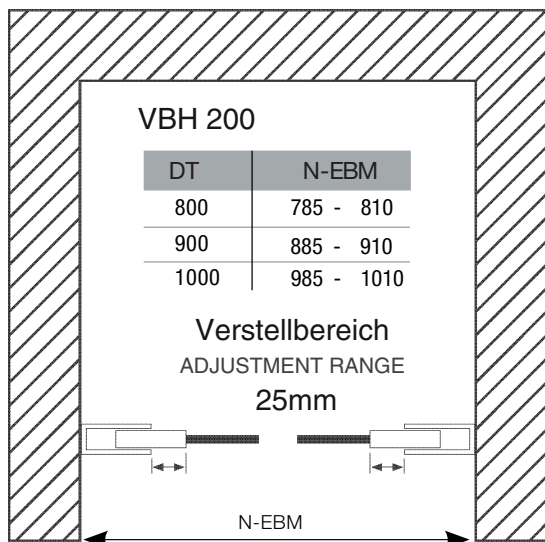


Technische Daten

technical data

Nischenmontage

MOUNTING WALL TO WALL



Verstellbereiche /ADJUSTMENT RANGE

Drehsäule/COLUMN: 15mm

Anschlag/STOP PROFILE: 10mm

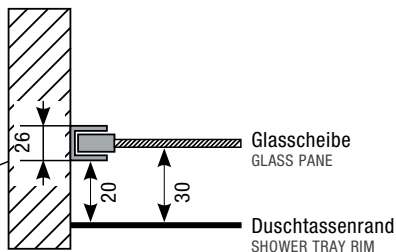
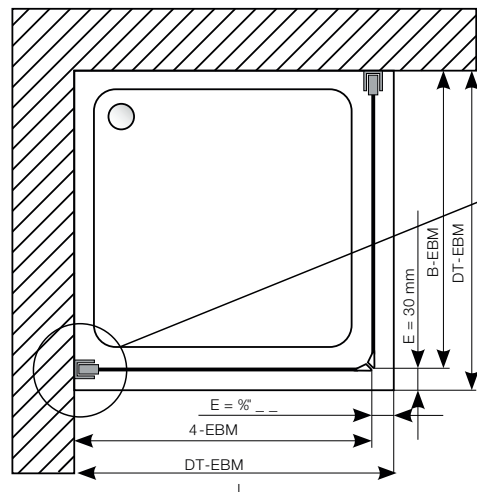
Wandprofil Seitenteil/PROFILE: 15mm

Montage Fronteinstieg mit Seitenteil / Eckeinstieg

MOUNTING FRONT ENTRY/CORNER ENTRY

Montage auf Duschtasse

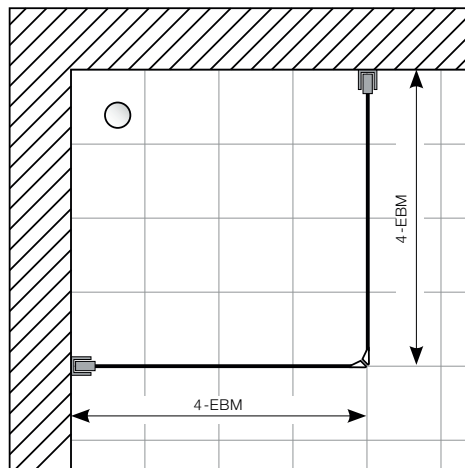
SHOWER TRAY MOUNTING



DT	DT-EBM	B-EBM
800	785 - 800	755 - 770
900	885 - 900	855 - 870
1000	985 - 1000	955 - 970

Montage Bodeneben

FLOOR MOUNTING



DT = Duschtasse / SHOWER TRAY

E = Einrückmaß / INSERTING MEASURE

N-EBM = Nischeneinbaumaß / NICHE MOUNTING MEASURE

B-EBM = Bodenebenes Einbaumaß / FLOOR MOUNTING MEASURE

DT-EBM = Duschtasseneinbaumaß / SHOWER TRAY INSTALLATION MEASURE