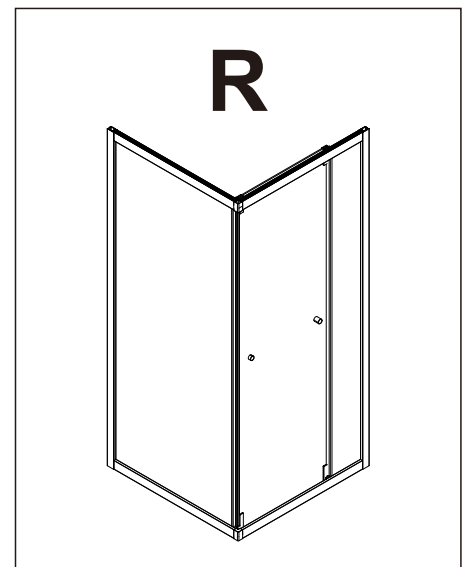
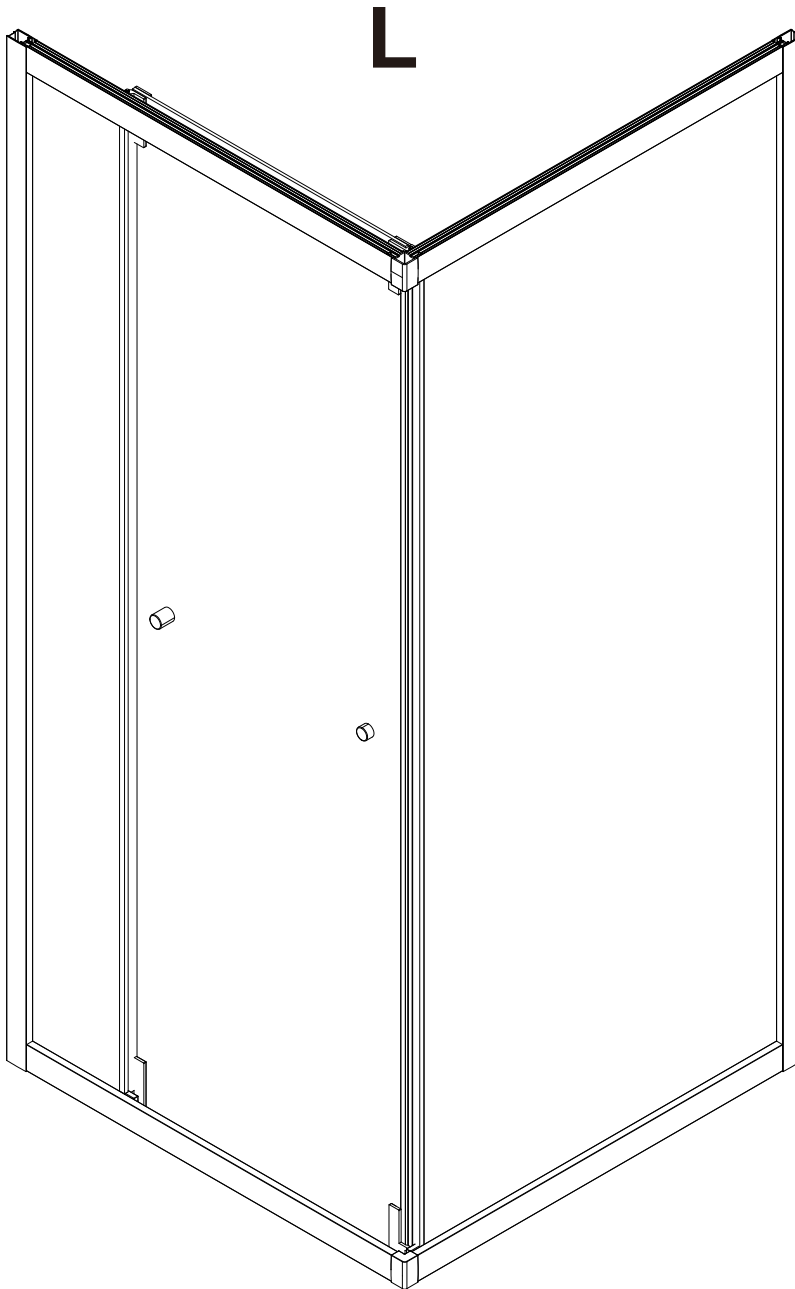
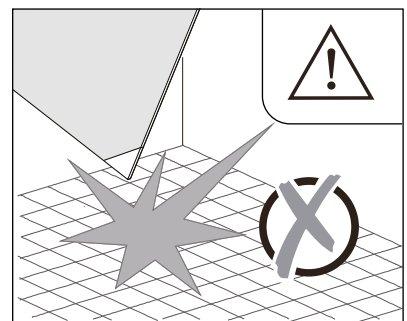
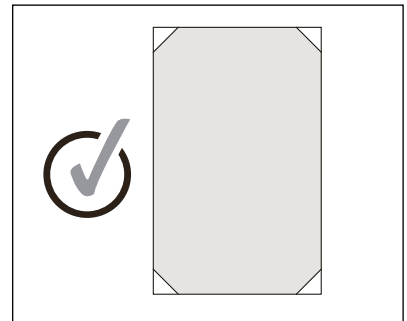
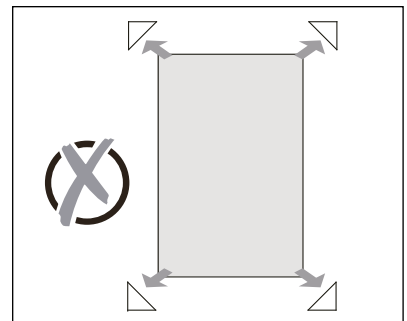
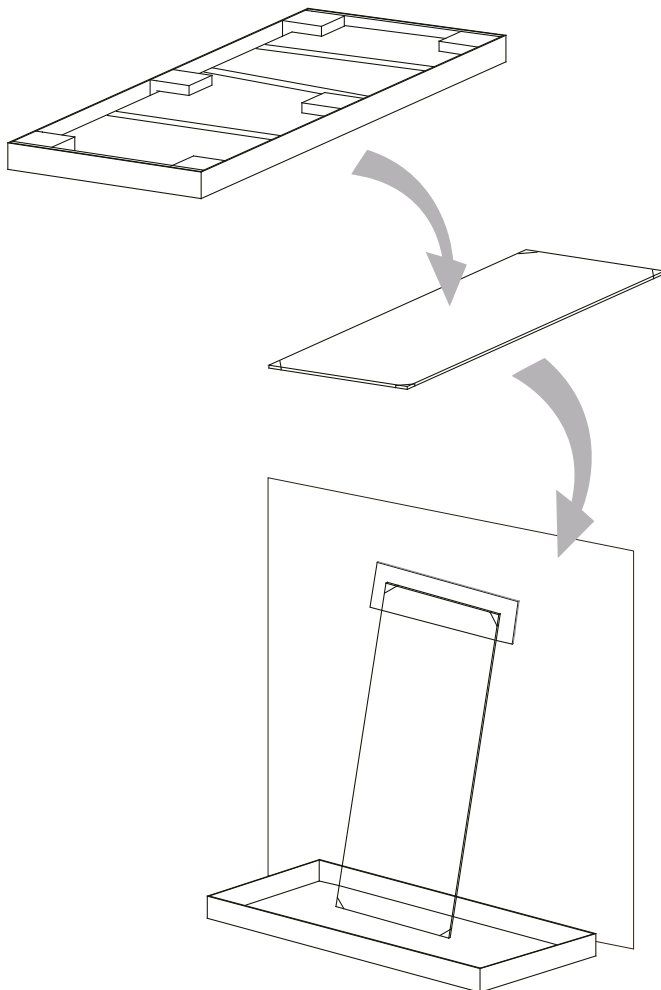
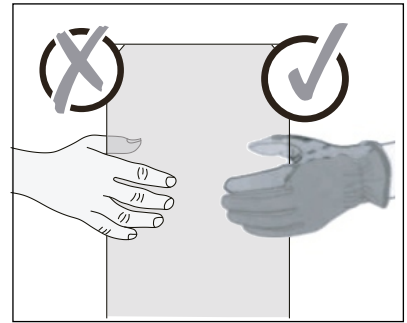
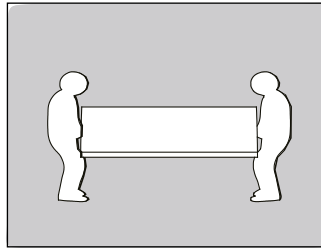
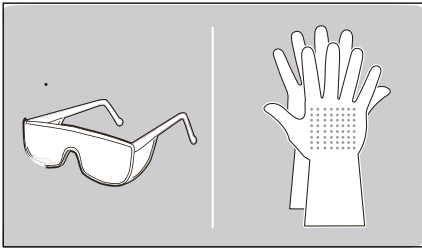
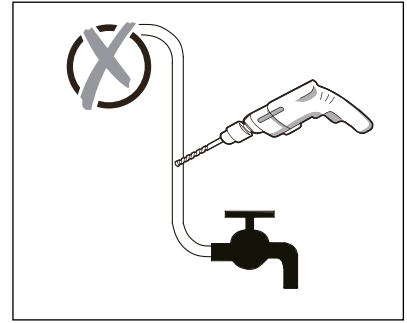
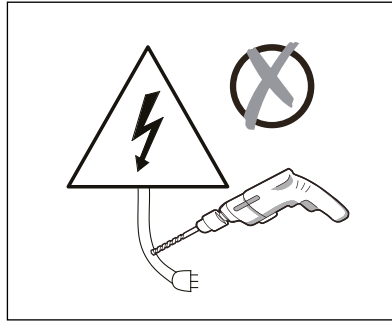
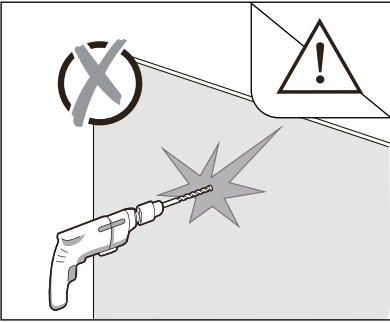


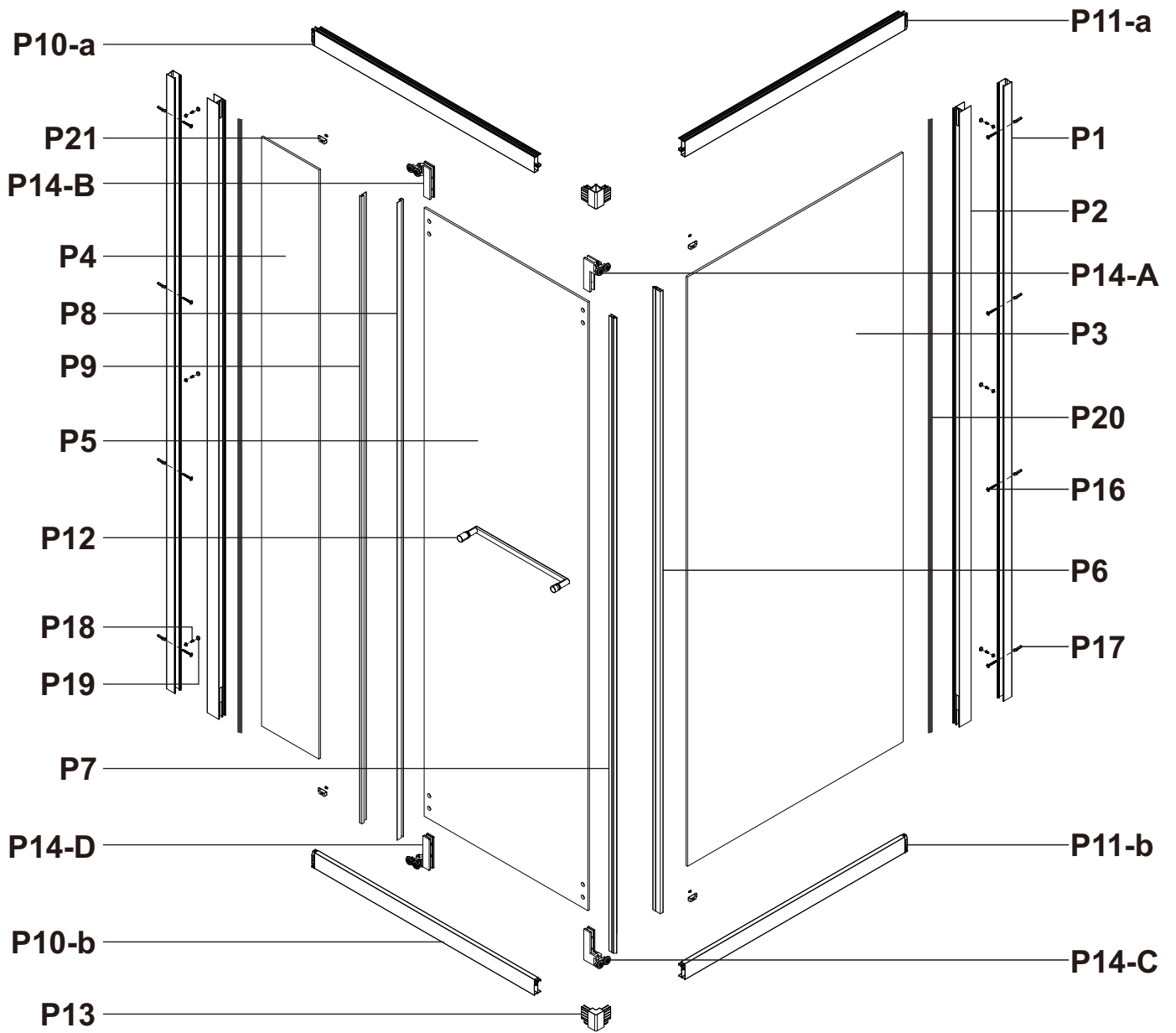


Camargue®

Verona





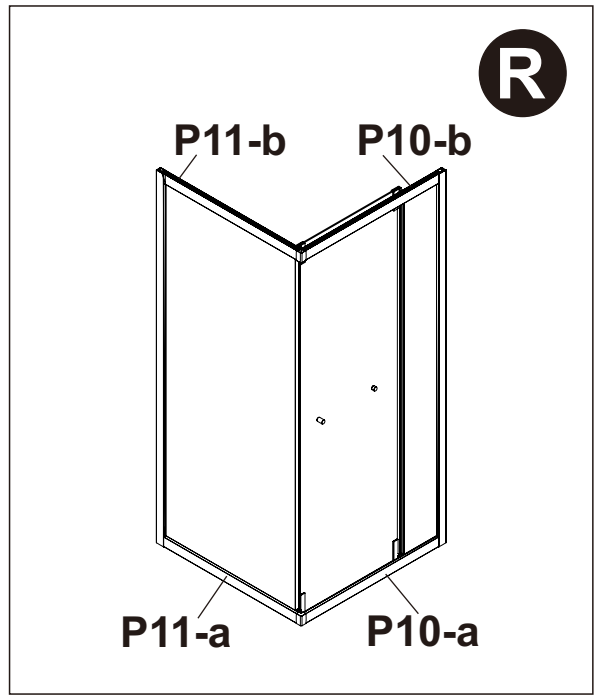
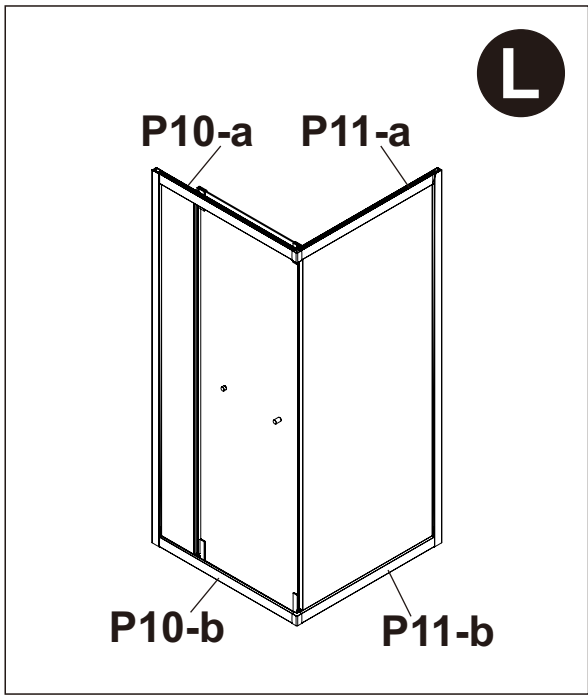
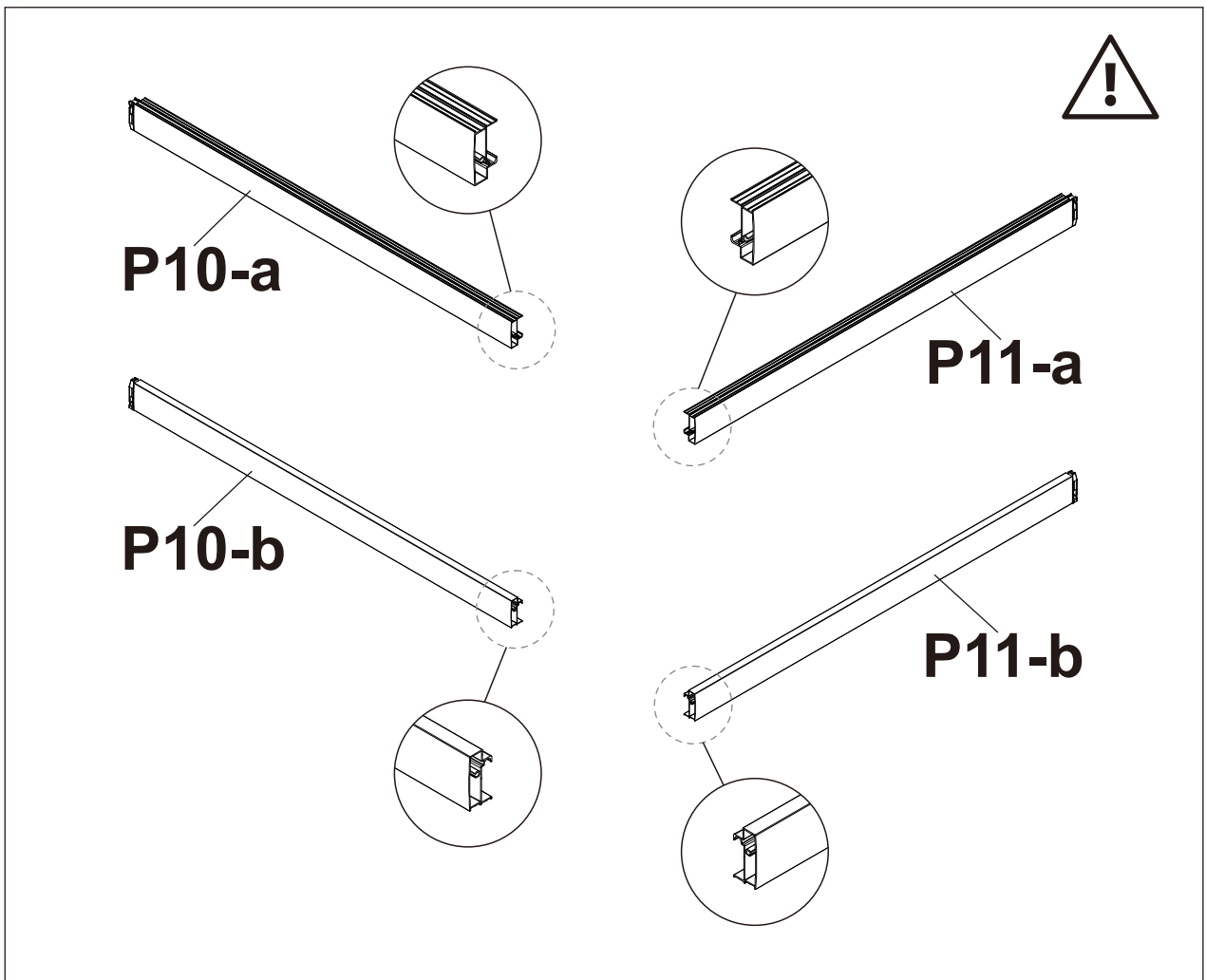


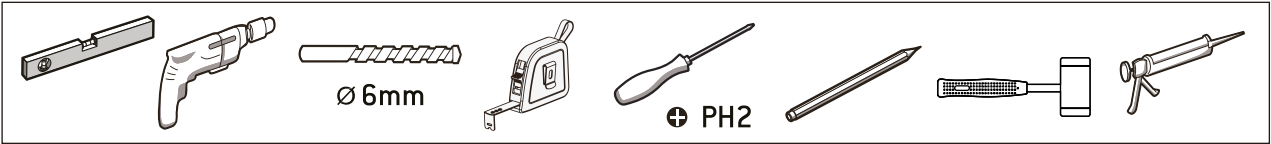
P1 X2 1	P2 X2 1	P3 X1	P4 X1
P5 X1	P6 X1 1	P7 X1 1	P8 X1
P9 X1	P10 X1	P11 X1	P12 X1 1
P13 X2 1	P14 X1		
P16 ST4x30MM X8	P17 X8	P18 ST4x12MM X10	P19 X6
	P20 X1	P21 X4	P22 X1

 Ø 6mm	
 Ø 6mm	
 PH2	
 Ø 3mm	

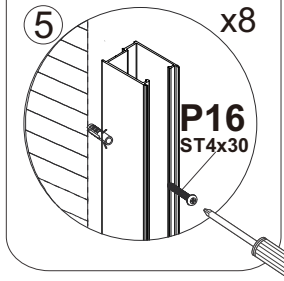
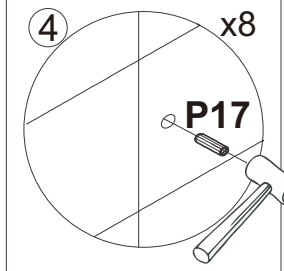
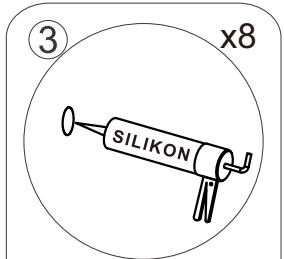
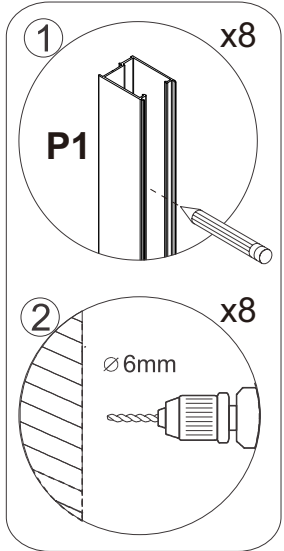
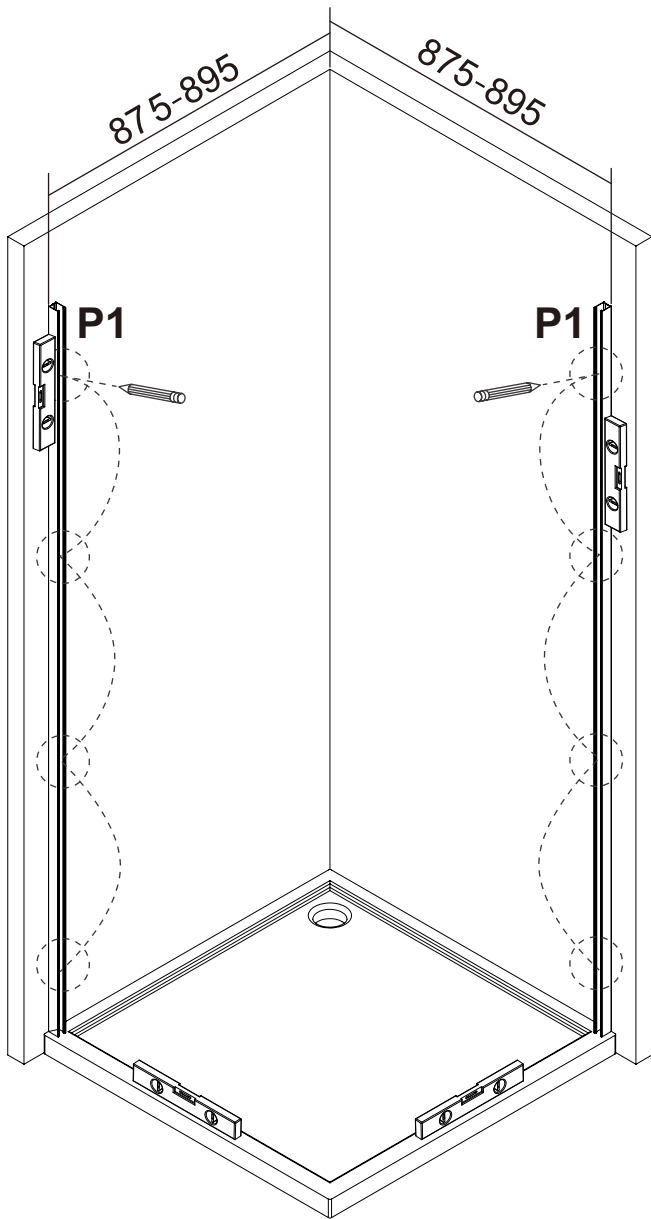
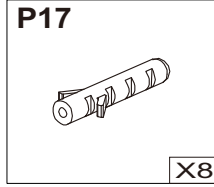
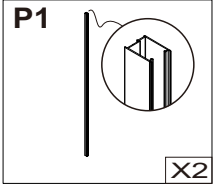
Ersatzteile / Spare Parts

Pos.	Art.-Nr.	Art.-Nr.	Bezeichnung/ Description
	Silberglanz/Chrome	Schwarz/Black	
1	ZB RDL09-01-21	ZBRDL09-01-10	Wandprofil/ wall profile
2	ZB RDL09-02-21	ZBRDL09-02-10	Führungsprofil/ guide profile
3	ZB RDL09-03	ZBRDL09-03	Seitenteil Glas/ side panel glass
4	ZB RDL09-04	ZBRDL09-04	Festteil Glas/ fixed part glass
5	ZB RDL09-05	ZBRDL09-05	Türglas/ door glass
6	ZB RDL09-06	ZBRDL09-06-10	Magnetdichtprofil/ magnetic profile
7	ZB RDL09-07	ZBRDL09-07-10	Magnetdichtprofil/ magnetic profile
8	ZB RDL09-08	ZBRDL09-08-10	Dichtprofil/ sealing profile
9	ZB RDL09-09	ZBRDL09-09-10	Dichtprofil/ sealing profile
10	ZB RDL09-10-21	ZBRDL09-10-10	Führungsprofil/ guide profile
11	ZB RDL09-11-21	ZBRDL09-11-10	Führungsprofil/ guide profile
12	ZB RDL09-12-21	ZBRDL09-12-10	Griff/ handle
13	ZB RDL09-13-21	ZBRDL09-13-10	Eckverbinder/ corner connector
14	ZB RDL09-14-L-21	ZBRDL09-14-L-10	Laufrollen Set links/ roller set left
	ZB RDL09-14-R-21	ZBRDL09-14-R-10	Laufrollen Set rechts/ roller set right
14R	ZB RDL09-14-R	ZBRDL09-14-R	Rollen mit Schrauben/ rollers with screws
16,17	ZB RDL09-MB	ZBRDL09-MB	Montagebeutel/ assembly bag
18,19	ZB RDL09-MB-21	ZBRDL09-MB-10	Montagebeutel/ assembly bag
20	ZB RDL09-20	ZBRDL09-20-10	Keildichtung/ wedge seal
21	ZB RDL09-21-21	ZBRDL09-21-10	Glashalter/ glass holder

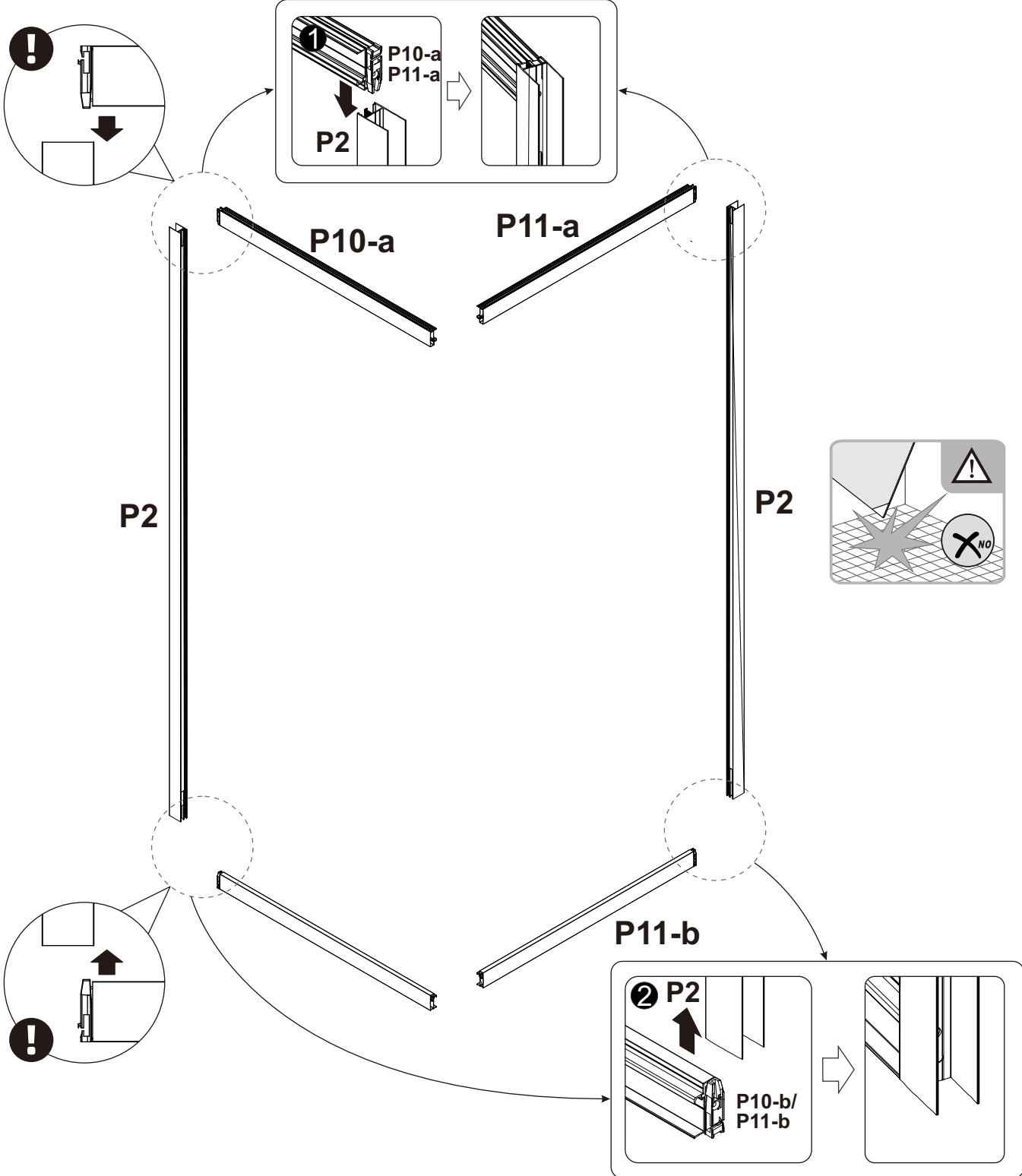
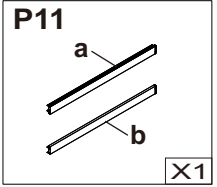
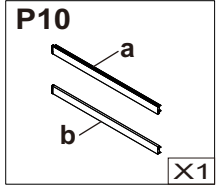
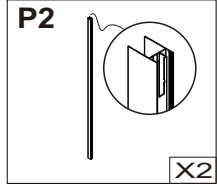




1

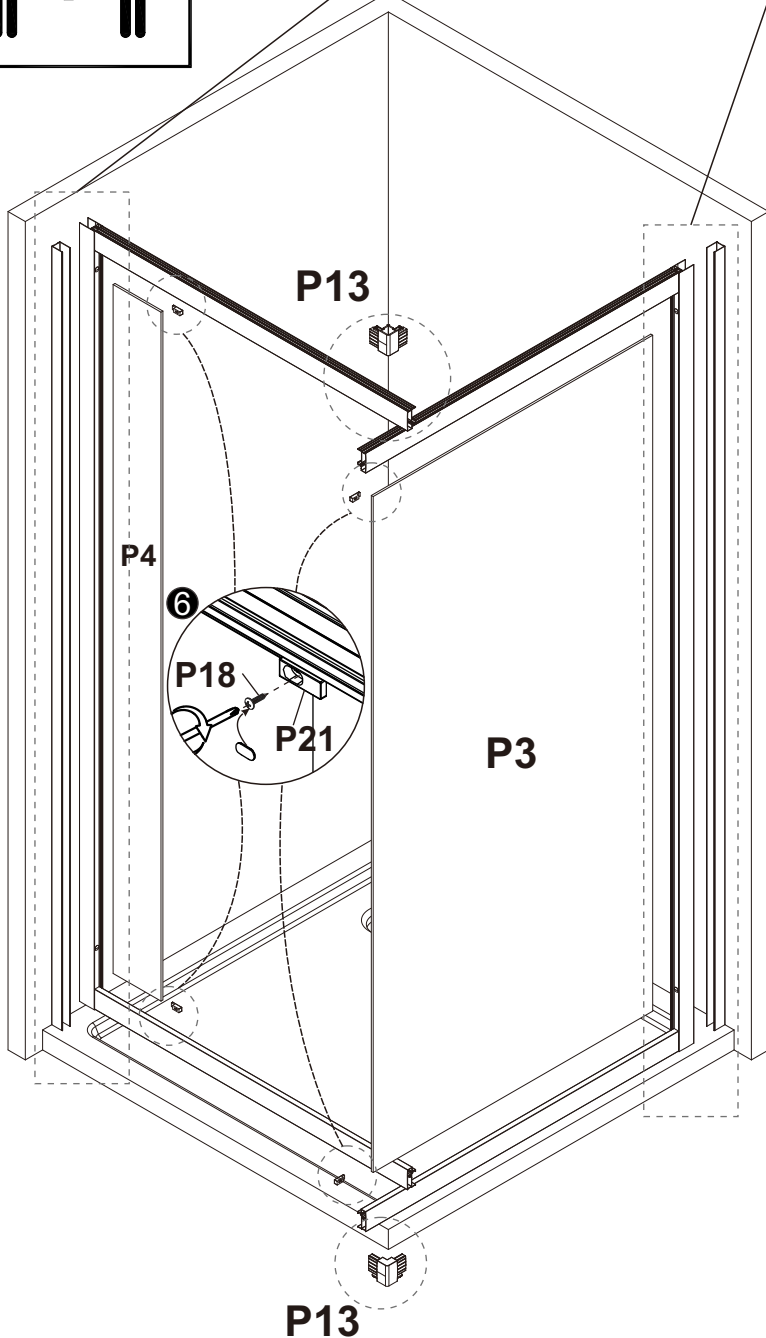
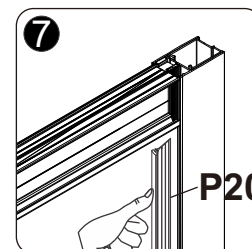
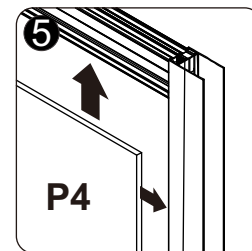
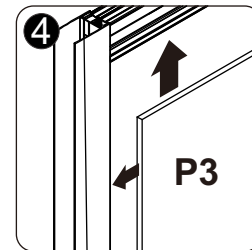
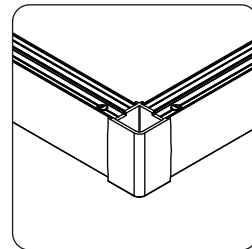
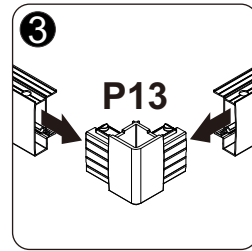
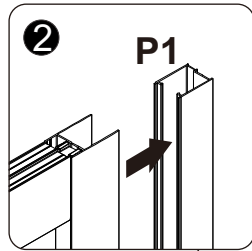
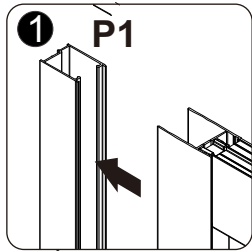
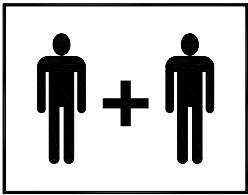
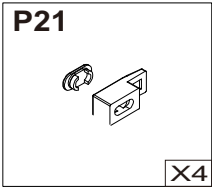
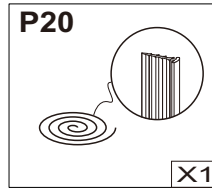
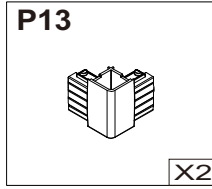
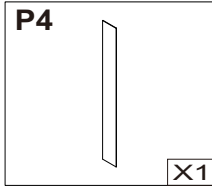
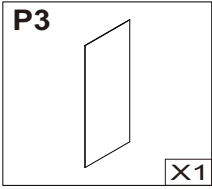


2





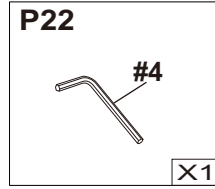
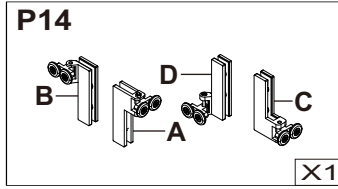
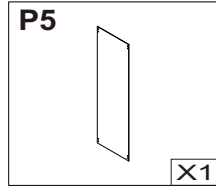
3



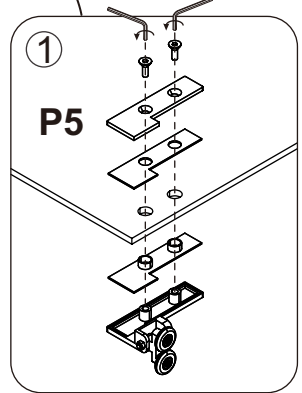
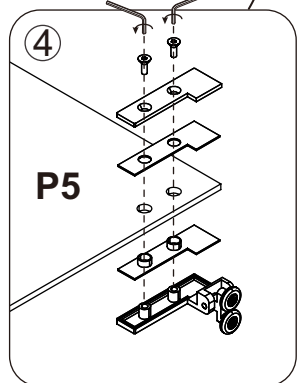
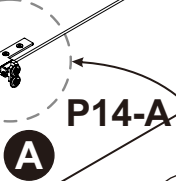
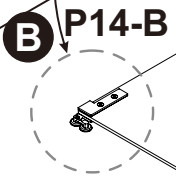
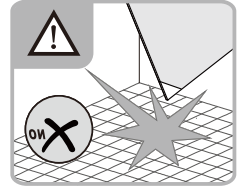
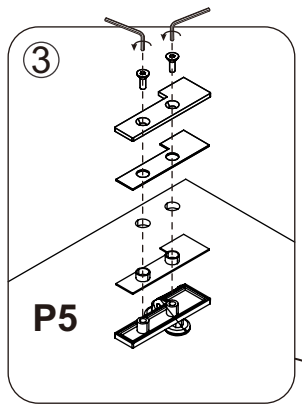
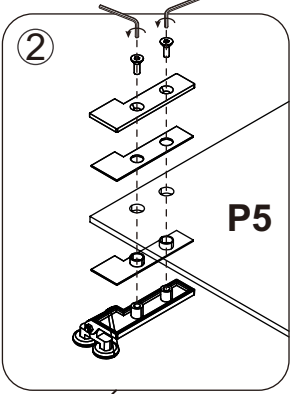
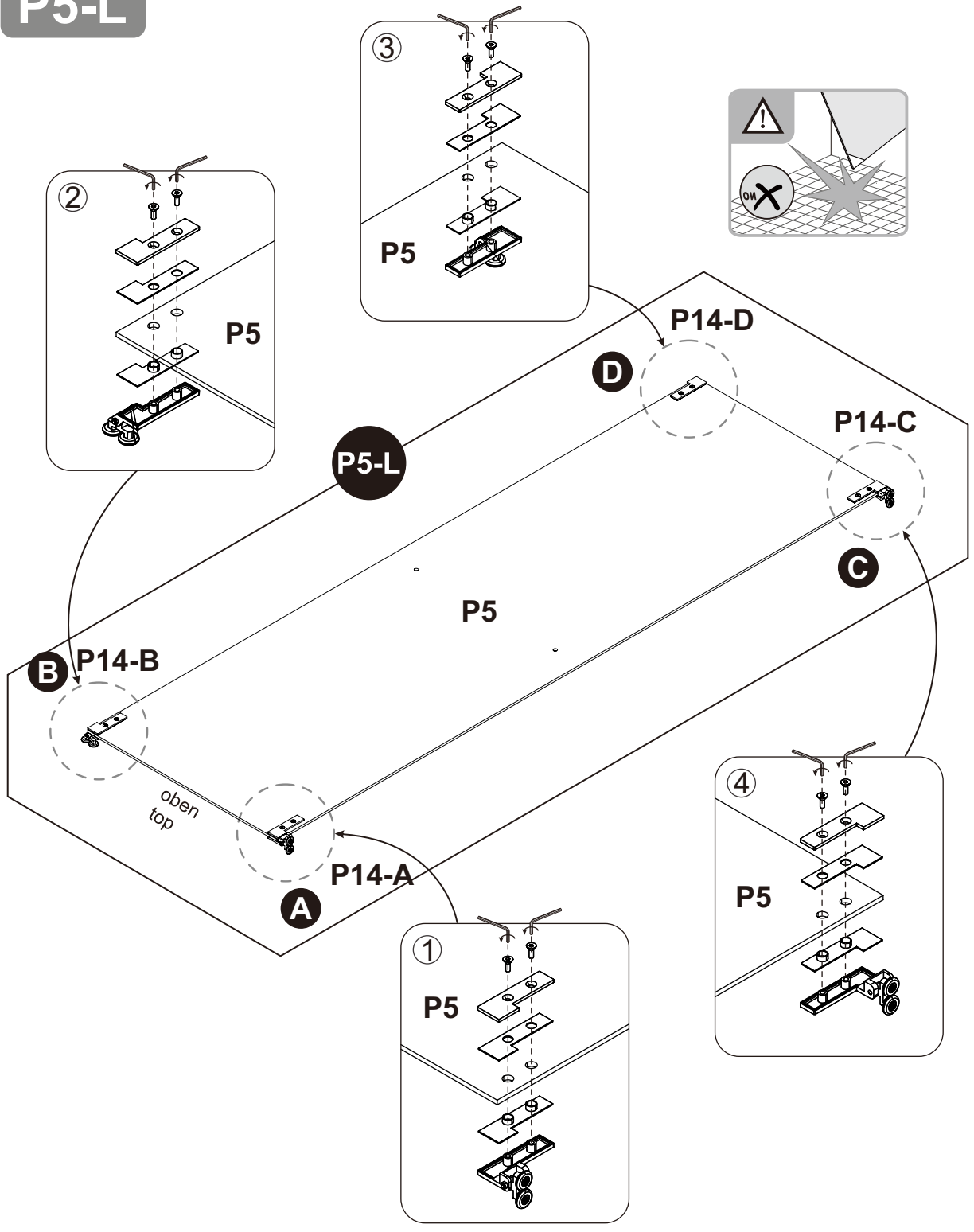


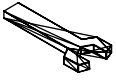
PH2

4



P5-L



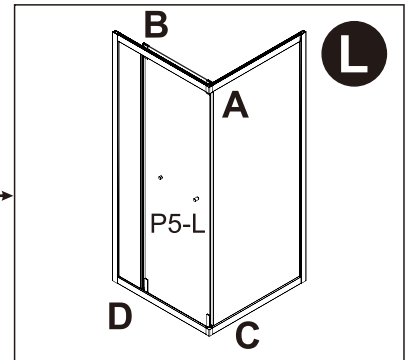
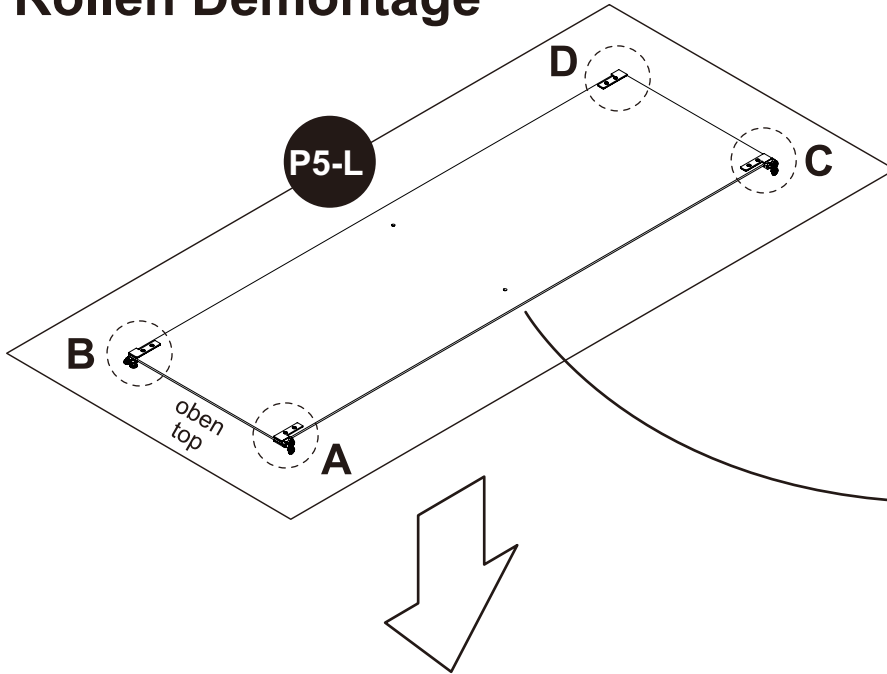


Roller disassembly process Rollen Demontage



Die Standardkonfiguration für dieses Produkt ist die "L"-Version

The default configuration of this product is the "L" version



<p>Ⓐ</p>			<p>A(1)</p> <p>A(2)</p>
<p>Ⓑ</p>			<p>B(1)</p> <p>B(2)</p>
<p>Ⓒ</p>		<p>C(1)</p> <p>C(2)</p>	
<p>Ⓓ</p>		<p>D(1)</p> <p>D(2)</p>	

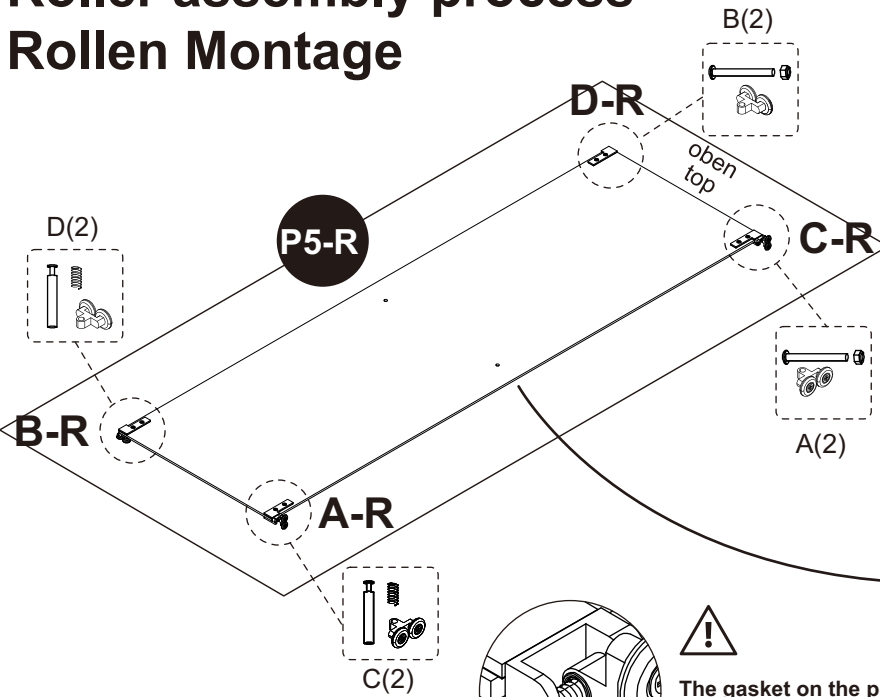


Montage video

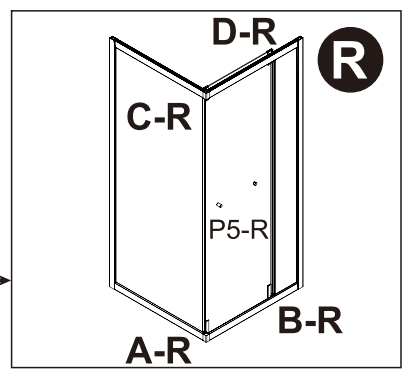


Roller assembly process

Rollen Montage



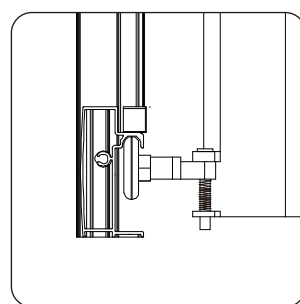
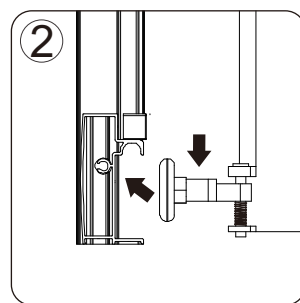
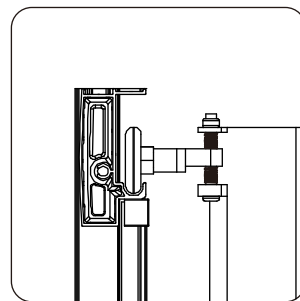
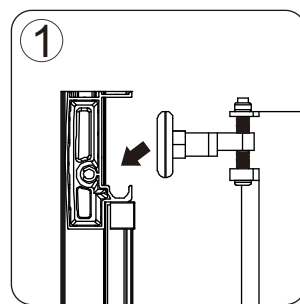
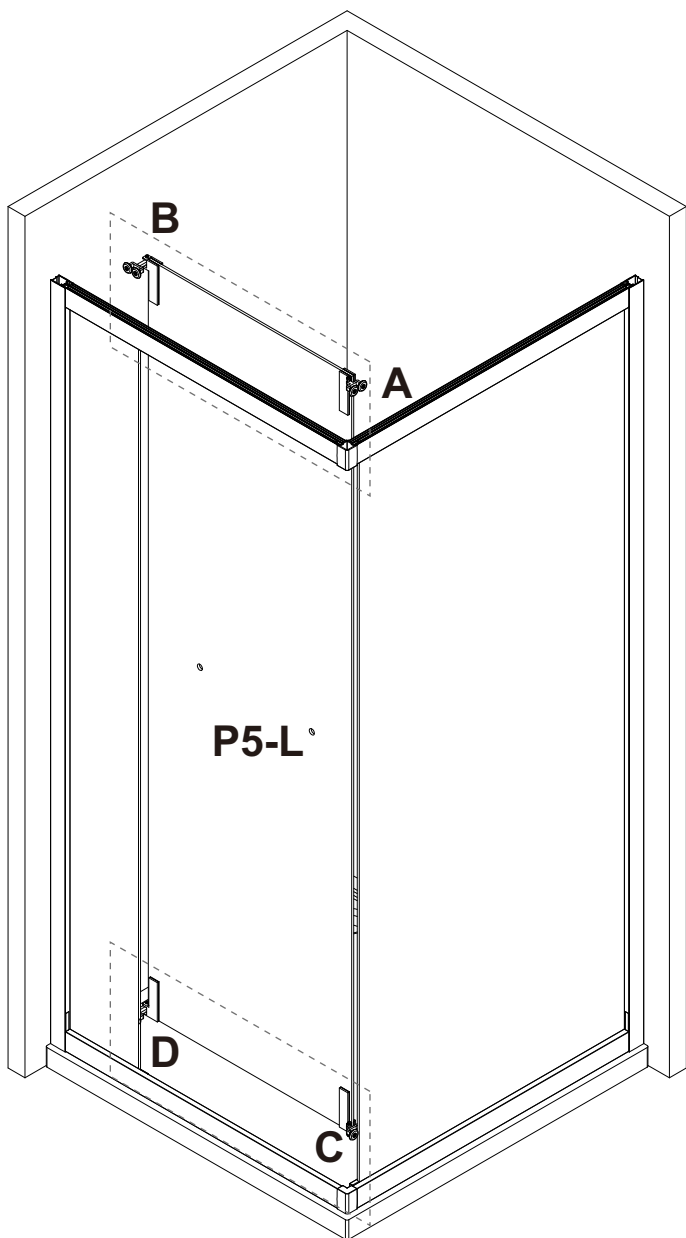
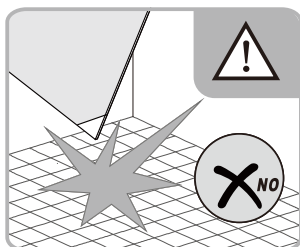
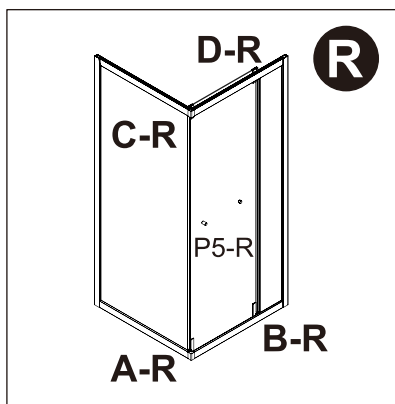
Umbau in die "R"-Version
Conversion into the "R" version



!
 The gasket on the pole must be close to the spring
 Der Gleithülsenbund muss auf der Seite der Feder sein

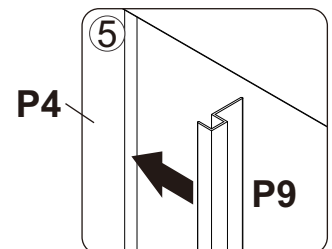
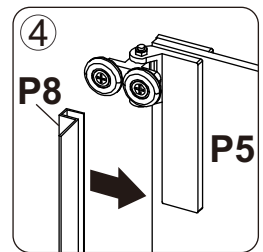
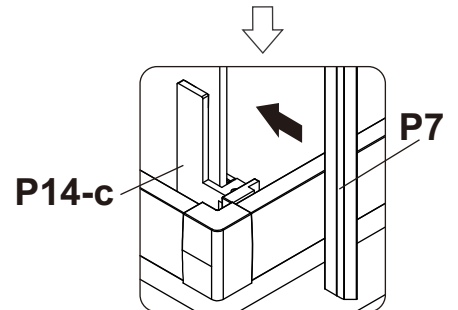
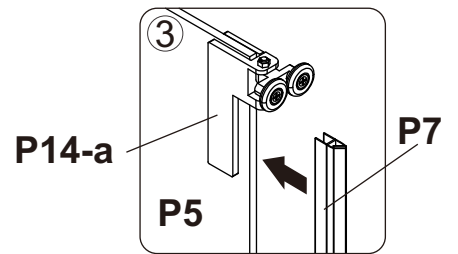
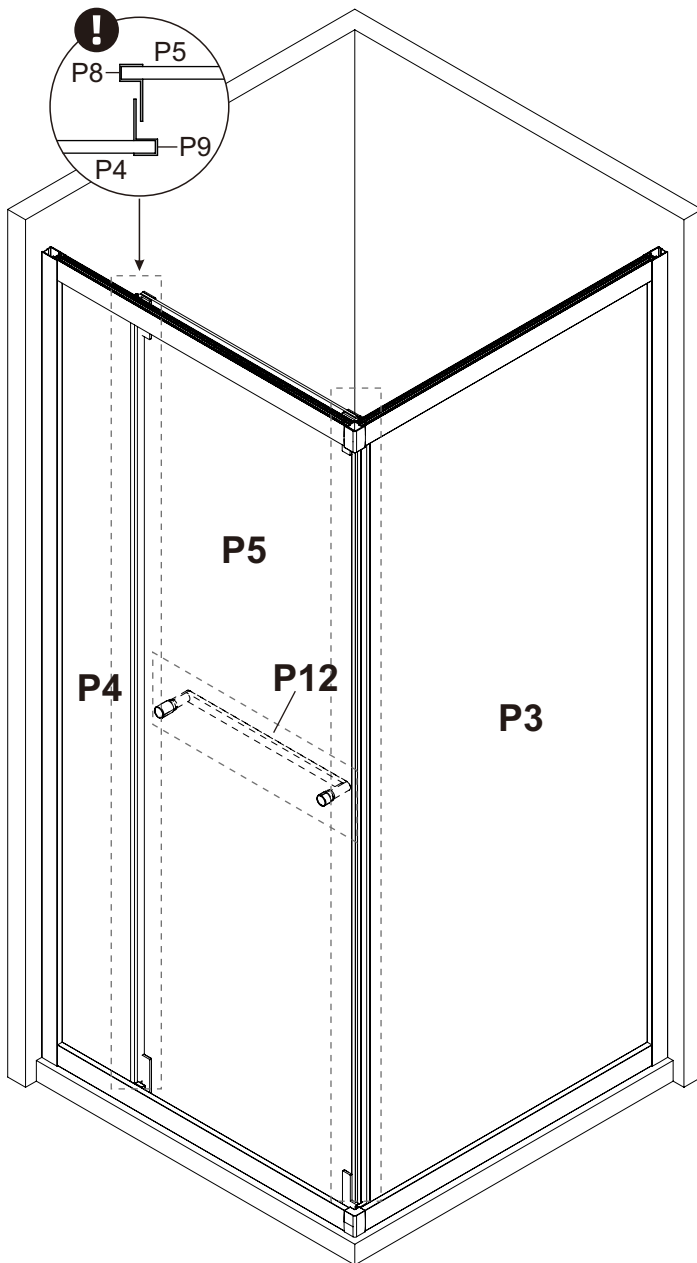
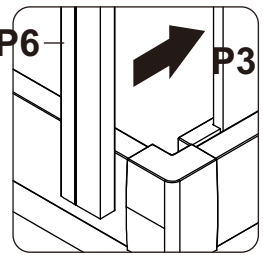
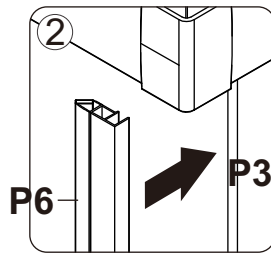
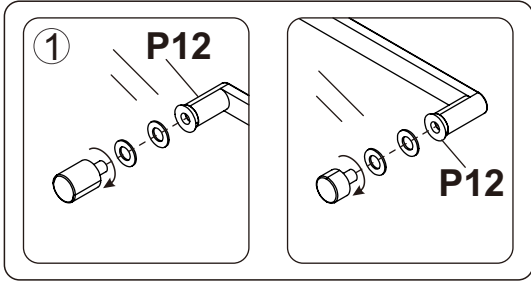
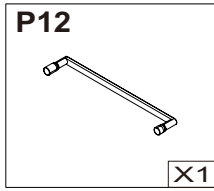
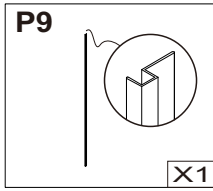
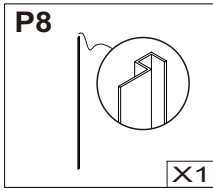
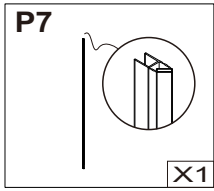
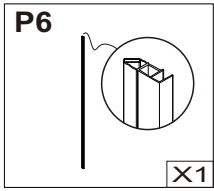
A-R	<p>A(1)+C(2)</p>		<p>! Tighten Anziehen</p>
B-R	<p>B(1)+D(2)</p>		<p>! Tighten Anziehen</p>
C-R	<p>C(1)+A(2)</p>		
D-R	<p>D(1)+B(2)</p>		

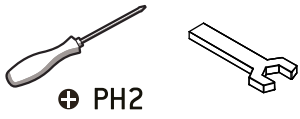
5





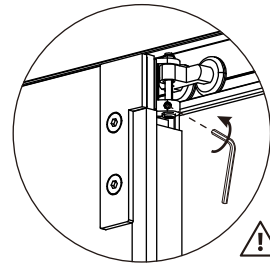
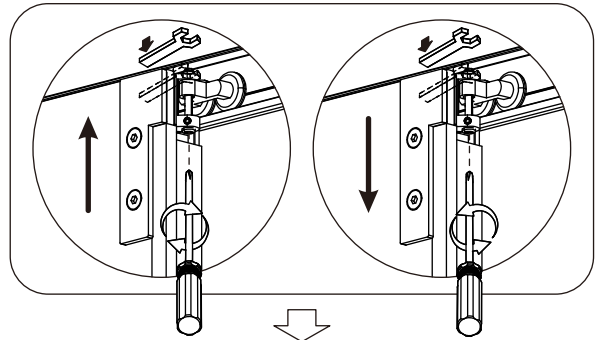
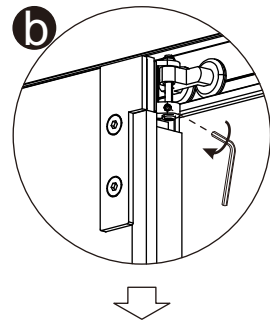
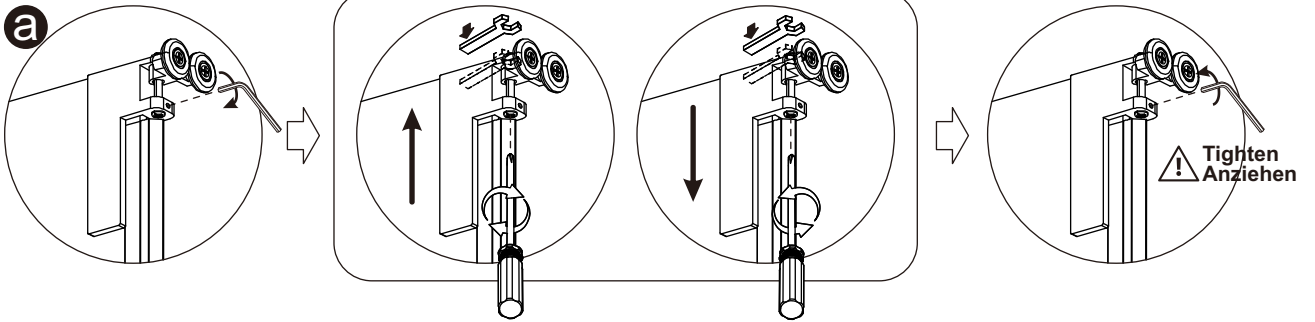
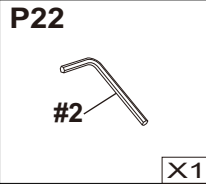
6



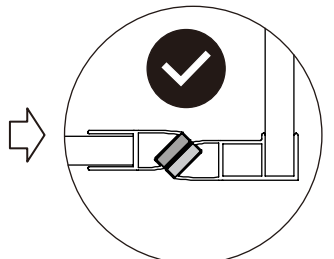
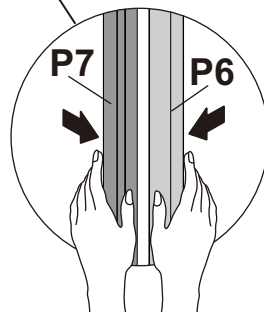
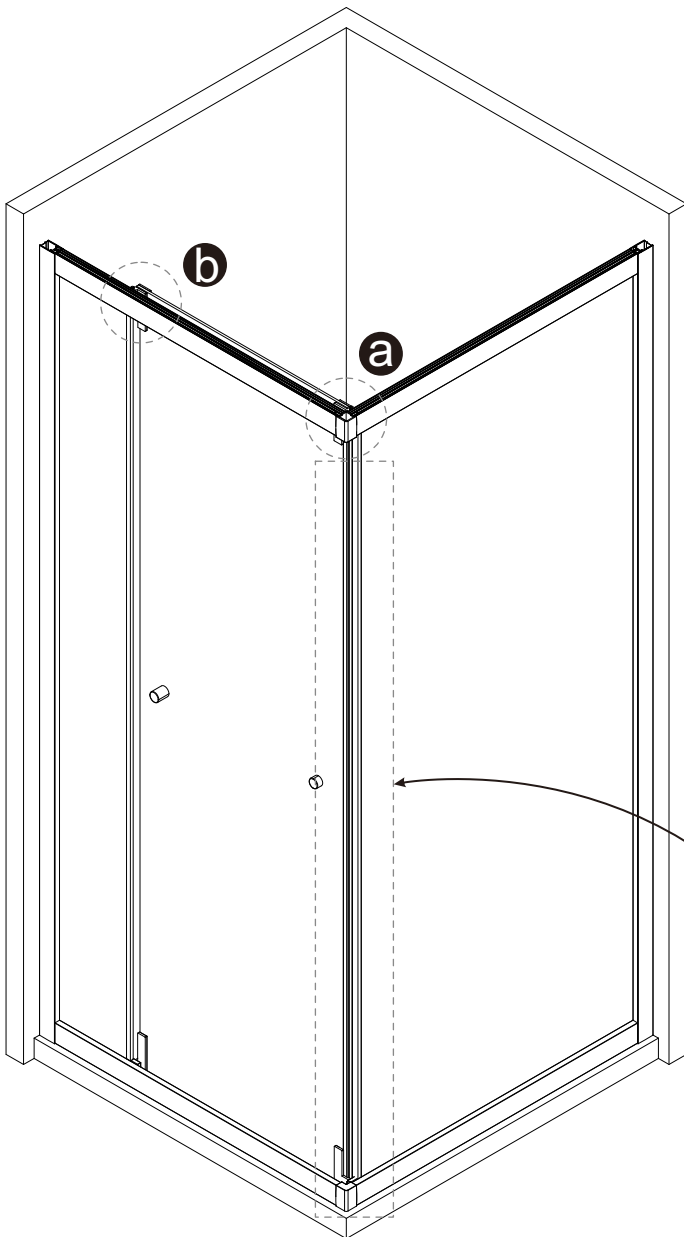


⊕ PH2

7



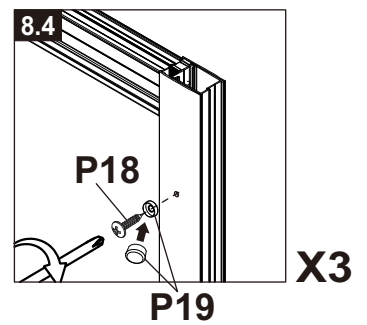
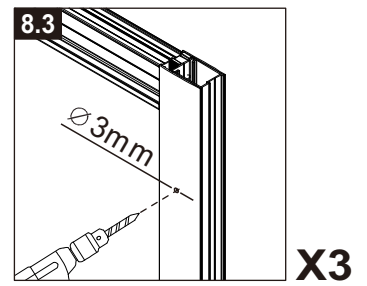
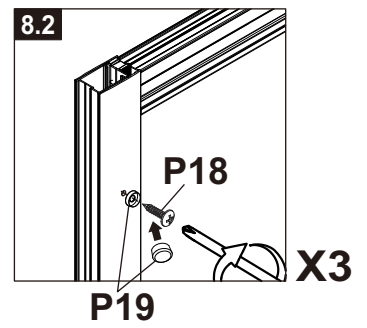
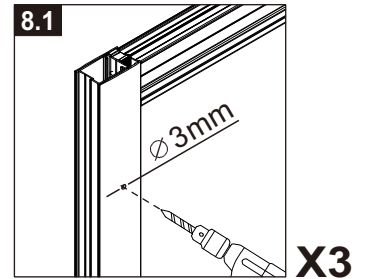
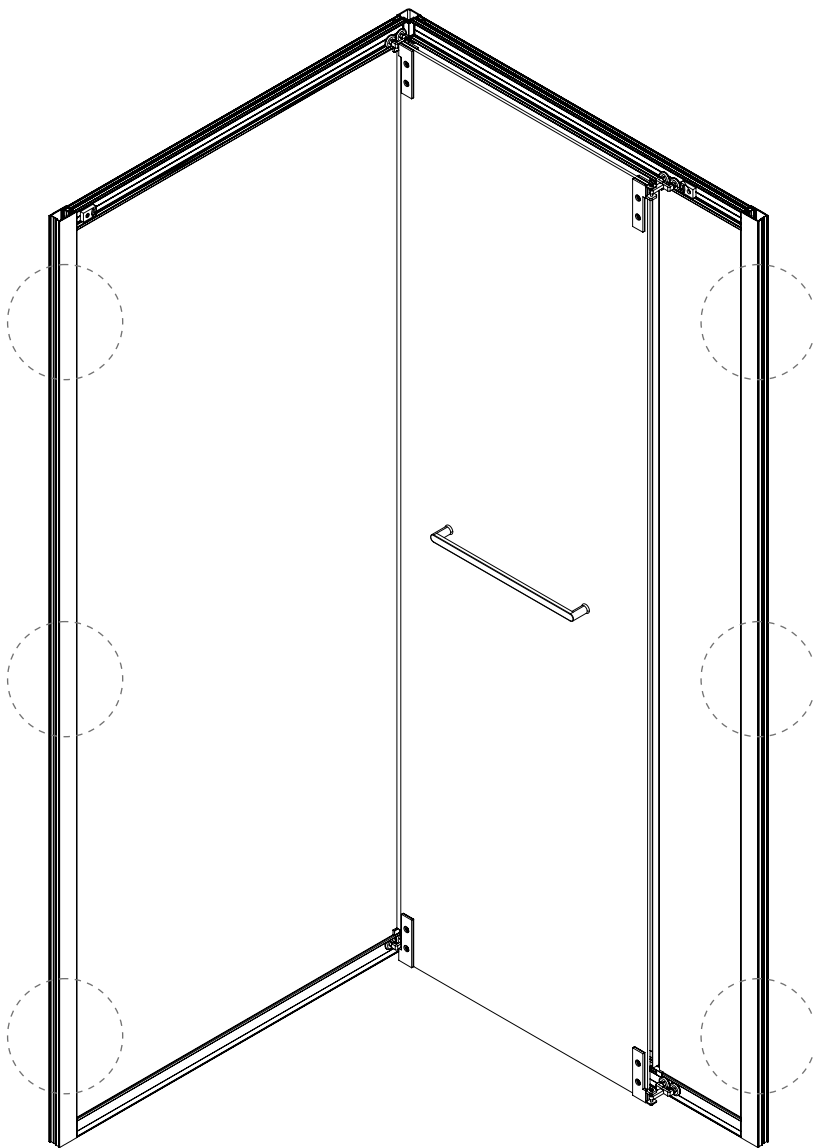
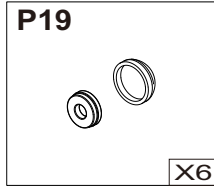
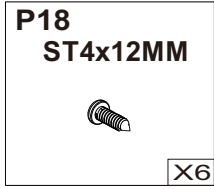
⚠ Tighten Anziehen

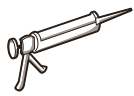


16



8





9

