



Shenzhen LCS Compliance Testing Laboratory Ltd.
 Add: Unit F-G, Floor 23, Kechuang Building, Quanzhi Innovation Science and Technology Park,
 Shajing Town, Bao'an District, Shenzhen, Guangdong, China
 Tel: (86)755-23353209 Internet: Http://www.LCS-cert.com

Report No.: LCS180906028AR

TEST REPORT

Client company : CAR PARTS DESIGN TRADING CO., LTD.
Client address : 21/F, Tai Yau Building, 181 Johnston Road, Wanchai, Hong Kong
Manufacturer : RITS ELECTRONICS(SHENZHEN) CO., LTD.
Address : ChengJian Industrial Zone-F, Lingxia Road#1, Fenghuang Chun, Fuyong District, Baoan Zone, Shenzhen City, GD, China.

Report on the submitted samples said to be:

Sample Name : Wireless Car Charger
Trade Mark : KODAK
Style/ Item No. : UC101, UC102, UC103
Sample Receiving Date : August 20, 2018
Testing Period : August 20, 2018 ~ September 21, 2018
Results : Please refer to next page(s).

Summary of Test Results:

TEST REQUEST

CONCLUSION

As specified by client, to screen the 191 substances of very high concern(SVHC) under Regulation(EC) No 1907/2006 of REACH in the submitted sample(s).

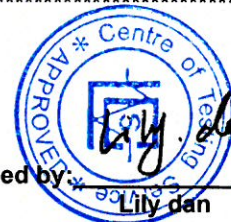
Pass

 Signed for and on behalf of LCS

Written By: Linda Ning
 Linda Ning

Checked by: Suez Su
 Suez Su

Approved by: Lily dan
 Lily dan





Shenzhen LCS Compliance Testing Laboratory Ltd.

Add: Unit F-G, Floor 23, Kechuang Building, Quanzhi Innovation Science and Technology Park, Shajing Town, Bao'an District, Shenzhen, Guangdong, China

Tel: (86)755-23353209

Internet: Http://www.LCS-cert.com

Report No.: LCS180906028AR

No.	Items	CAS No.	EC No.	MDL(mg/kg)	Total(mg/kg)
1	Triethyl arsenate	15606-95-8	427-700-2	50	N.D.
2	Sodium dichromate	10588-01-9, 7789-12-0	234-190-3	50	N.D.
3	Lead hydrogen arsenate	7784-40-9	232-064-2	50	N.D.
4	Hexabromocyclododecane (HBCDD) and all major diastereoisomers identified	25637-99-4, 3194-55-6, (134237-51-7, 134237-50-6, 134237-52-8)	247-148-4 221-695-9	50	N.D.
5	Dibutyl phthalate (DBP)	84-74-2	201-557-4	50	N.D.
6	Diarsenic trioxide	1327-53-3	215-481-4	50	N.D.
7	Diarsenic pentaoxide	1303-28-2	215-116-9	50	N.D.
8	Cobalt dichloride	7646-79-9	231-589-4	50	N.D.
9	Bis(tributyltin) oxide (TBTO)	56-35-9	200-268-0	50	N.D.
10	Bis (2-ethylhexyl)phthalate (DEHP)	117-81-7	204-211-0	50	N.D.
11	Benzyl butyl phthalate (BBP)	85-68-7	201-622-7	50	N.D.
12	Anthracene	120-12-7	204-371-1	50	N.D.
13	Alkanes, C10-13, chloro (Short Chain Chlorinated Paraffins)	85535-84-8	287-476-5	50	N.D.
14	5-tert-butyl-2,4,6-trinitro-m-xylene (Musk xylene)	81-15-2	201-329-4	50	N.D.
15	4,4'- Diaminodiphenylmethane (MDA)	101-77-9	202-974-4	50	N.D.
16	Tris(2-chloroethyl) phosphate	115-96-8	204-118-5	50	N.D.
17	Pitch, coal tar, high-temp.	65996-93-2	266-028-2	50	N.D.
18	Lead sulfochromate yellow (C.I. Pigment Yellow 34)	1344-37-2	215-693-7	50	N.D.
19	Lead chromate molybdate sulphate red (C.I. Pigment Red 104)	12656-85-8	235-759-9	50	N.D.
20	Lead chromate	7758-97-6	231-846-0	50	N.D.
21	Diisobutyl phthalate	84-69-5	201-553-2	50	N.D.
22	Anthracene oil, anthracene-low	90640-82-7	292-604-8	50	N.D.
23	Anthracene oil, anthracene paste, distn. lights	91995-17-4	295-278-5	50	N.D.
24	Anthracene oil, anthracene paste, anthracene fraction	91995-15-2	295-275-9	50	N.D.
25	Anthracene oil, anthracene paste	90640-81-6	292-603-2	50	N.D.



Shenzhen LCS Compliance Testing Laboratory Ltd.

Add: Unit F-G, Floor 23, Kechuang Building, Quanzhi Innovation Science and Technology Park, Shajing Town, Bao'an District, Shenzhen, Guangdong, China

Tel: (86)755-23353209

Internet: [Http://www.LCS-cert.com](http://www.LCS-cert.com)

Report No.: LCS180906028AR

No.	Items	CAS No.	EC No.	MDL(mg/kg)	Total(mg/kg)
26	Anthracene oil	90640-80-5	292-602-7	50	N.D.
27	2,4-dinitrotoluene	121-14-2	204-450-0	50	N.D.
28	Acrylamide	79-06-1	201-173-7	50	N.D.
29	Trichloroethylene	79-01-6	201-167-4	50	N.D.
30	Tetraboron disodium heptaoxide, hydrate	12267-73-1	235-541-3	50	N.D.
31	Sodium chromate	7775-11-3	231-889-5	50	N.D.
32	Potassium dichromate	7778-50-9	231-906-6	50	N.D.
33	Potassium chromate	7789-00-6	232-140-5	50	N.D.
34	Disodium tetraborate, anhydrous	1330-43-4 12179-04-3 1303-96-4	215-540-4	50	N.D.
35	Boric acid	10043-35-3 11113-50-1	233-139-2 234-343-4	50	N.D.
36	Ammonium dichromate	7789-09-5	232-143-1	50	N.D.
37	Cobalt(II) sulphate	10124-43-3	233-334-2	50	N.D.
38	Cobalt(II) dinitrate	10141-05-6	233-402-1	50	N.D.
39	Cobalt(II) diacetate	71-48-7	200-755-8	50	N.D.
40	Cobalt(II) carbonate	513-79-1	208-169-4	50	N.D.
41	Chromium trioxide	1333-82-0	215-607-8	50	N.D.
42	Acids generated from chromium trioxide and their oligomers Oligomers of chromic acid and dichromic acid	7738-94-5 13530-68-2	231-801-5 236-881-5	50	N.D.
43	2-methoxyethanol	109-86-4	203-713-7	50	N.D.
44	2-ethoxyethanol	110-80-5	203-804-1	50	N.D.
45	Strontium chromate	7789-06-2	232-142-6	50	N.D.
46	Hydrazine	7803-57-8 302-01-2	206-114-9	50	N.D.
47	2-ethoxyethyl acetate	111-15-9	203-839-2	50	N.D.
48	1-Methyl-2-pyrrolidone (NMP)	872-50-4	212-828-1	50	N.D.
49	1,2-Benzenedicarboxylic acid, di-C7-11-branched and linear alkyl esters	68515-42-4	271-084-6	50	N.D.



Shenzhen LCS Compliance Testing Laboratory Ltd.

Add: Unit F-G, Floor 23, Kechuang Building, Quanzhi Innovation Science and Technology Park, Shajing Town, Bao'an District, Shenzhen, Guangdong, China

Tel: (86)755-23353209

Internet: [Http://www.LCS-cert.com](http://www.LCS-cert.com)

Report No.: LCS180906028AR

No.	Items	CAS No.	EC No.	MDL(mg/kg)	Total(mg/kg)
50	1,2-Benzenedicarboxylic acid, di-C6-8-branched alkyl esters, C7-rich	71888-89-6	276-158-1	50	N.D.
51	1,2,3-trichloropropane	96-18-4	202-486-1	50	N.D.
52	Zirconia Aluminosilicate Refractory Ceramic Fibres	-	-	50	N.D.
53	Trilead diarsenate	3687-31-8	222-979-5	50	N.D.
54	Potassium hydroxyoctaoxodizincatedichromate	11103-86-9	234-329-8	50	N.D.
55	Phenolphthalein	77-09-8	201-004-7	50	N.D.
56	Pentazinc chromate octahydroxide	49663-84-5	256-418-0	50	N.D.
57	N,N-dimethylacetamide	127-19-5	204-826-4	50	N.D.
58	Lead styphnate	15245-44-0	239-290-0	50	N.D.
59	Lead dipicrate	6477-64-1	229-335-2	50	N.D.
60	Lead diazide, Lead azide	13424-46-9	236-542-1	50	N.D.
61	Formaldehyde, oligomeric reaction products with aniline	25214-70-4	500-036-1	50	N.D.
62	Dichromium tris(chromate)	24613-89-6	246-356-2	50	N.D.
63	Calcium arsenate	7778-44-1	231-904-5	50	N.D.
64	Bis(2-methoxyethyl) phthalate	117-82-8	204-212-6	50	N.D.
65	Bis(2-methoxyethyl) ether	111-96-6	203-924-4	50	N.D.
66	Arsenic acid	7778-39-4	231-901-9	50	N.D.
67	Aluminosilicate Refractory Ceramic Fibres	650-017-00-8 (index number)	-	50	N.D.
68	4-(1,1,3,3-tetramethylbutyl)phenol	140-66-9	205-426-2	50	N.D.
69	2-Methoxyaniline, o-Anisidine	90-04-0	201-963-1	50	N.D.
70	2,2'-dichloro-4,4'-methylenedianiline	101-14-4	202-918-9	50	N.D.
71	1,2-dichloroethane	107-06-2	203-458-1	50	N.D.
72	α,α -Bis[4-(dimethylamino)phenyl]-4(phenylamino)naphthalene-1-methanol (C.I. Solvent Blue 4)	6786-83-0	229-851-8	50	N.D.
73	N,N,N',N'-tetramethyl-4,4'-methylenedianiline (Michler's base)	101-61-1	202-959-2	50	N.D.



Shenzhen LCS Compliance Testing Laboratory Ltd.

Add: Unit F-G, Floor 23, Kechuang Building, Quanzhi Innovation Science and Technology Park, Shajing Town, Bao'an District, Shenzhen, Guangdong, China

Tel: (86)755-23353209

Internet: [Http://www.LCS-cert.com](http://www.LCS-cert.com)

Report No.: LCS180906028AR

No.	Items	CAS No.	EC No.	MDL(mg/kg)	Total(mg/kg)
74	Lead(II) bis(methanesulfonate)	17570-76-2	401-750-5	50	N.D.
75	Formamide	(75-12-7)	200-842-0	50	N.D.
76	Diboron trioxide	1303-86-2	215-125-8	50	N.D.
77	[4-[[4-anilino-1-naphthyl][4-(dimethyl amino)phenyl]methylene]cyclohexa-2,5-dien-1-ylidene] dimethylammonium chloride (C.I. Basic Blue 26)	2580-56-5	219-943-6	50	N.D.
78	[4-[4,4'-bis(dimethylamino) benzhydrylidene]cyclohexa-2,5-dien-1-ylidene]dimethylammonium chloride (C.I. Basic Violet 3)	548-62-9	208-953-6	50	N.D.
79	4,4'-bis(dimethylamino)benzophenone (Michler's ketone)	90-94-8	202-027-5	50	N.D.
80	4,4'-bis(dimethylamino)-4''-(methylamino)trityl alcohol	561-41-1	209-218-2	50	N.D.
81	1,3,5-tris[(2S and 2R)-2,3-epoxypropyl]-1,3,5-triazine-2,4,6-(1H,3H,5H)-trione (β-TGIC)	59653-74-6	423-400-0	50	N.D.
82	1,3,5-Tris(oxiran-2-ylmethyl)-1,3,5-triazinane-2,4,6-trione (TGIC)	2451-62-9	219-514-3	50	N.D.
83	1,2-dimethoxyethane,ethylene glycol dimethyl ether (EGDME)	110-71-4	203-794-9	50	N.D.
84	1,2-bis(2-methoxyethoxy)ethane (TEGDME,triglyme)	112-49-2	203-977-3	50	N.D.
85	Trilead dioxide phosphonate	12141-20-7	235-252-2	50	N.D.
86	Trilead bis(carbonate) dihydroxide	1319-46-6	215-290-6	50	N.D.
87	Tricosafuorododecanoic acid	307-55-1	206-203-2	50	N.D.
88	Tetralead trioxide sulphate	12202-17-4	235-380-9	50	N.D.
89	Tetraethyllead	78-00-2	201-075-4	50	N.D.
90	Sulfurous acid, lead salt, dibasic	62229-08-7	263-467-1	50	N.D.
91	Silicic acid, lead salt	11120-22-2	234-363-3	50	N.D.
92	Silicic acid (H ₂ Si ₂ O ₅), barium salt (1:1), lead-doped with lead (Pb) content above the applicable generic concentration limit for 'toxicity for reproduction' Repr. 1A (CLP) or category 1 (DSD),the substance is a member of the group entry of lead compounds, with index number 082-001-00-6 in Regulation (EC) No 1272/2008	68784-75-8	272-271-5	50	N.D.



Shenzhen LCS Compliance Testing Laboratory Ltd.

Add: Unit F-G, Floor 23, Kechuang Building, Quanzhi Innovation Science and Technology Park, Shajing Town, Bao'an District, Shenzhen, Guangdong, China

Tel: (86)755-23353209

Internet: Http://www.LCS-cert.com

Report No.: LCS180906028AR

No.	Items	CAS No.	EC No.	MDL(mg/kg)	Total(mg/kg)
93	Pyrochlore, antimony lead yellow	8012-00-8	232-382-1	50	N.D.
94	Pentalead tetraoxide sulphate	12065-90-6	235-067-7	50	N.D.
95	Pentacosafuorotridecanoic acid	72629-94-8	276-745-2	50	N.D.
96	Orange lead (lead tetroxide)	1314-41-6	215-235-6	50	N.D.
97	o-toluidine	95-53-4	202-429-0	50	N.D.
98	o-aminoazotoluene	97-56-3	202-591-2	50	N.D.
99	N-pentyl-isopentylphthalate	776297-69-9	-	50	N.D.
100	N-methylacetamide	79-16-3	201-182-6	50	N.D.
101	N,N-dimethylformamide	(68-12-2)	200-679-5	50	N.D.
102	Methyloxirane (Propylene oxide)	75-56-9	200-879-2	50	N.D.
103	Methoxyacetic acid	625-45-6	210-894-6	50	N.D.
104	Lead titanium zirconium oxide	12626-81-2	235-727-4	50	N.D.
105	Lead titanium trioxide	12060-00-3	235-038-9	50	N.D.
106	Lead oxide sulfate	12036-76-9	234-853-7	50	N.D.
107	Lead monoxide (lead oxide)	1317-36-8	215-267-0	50	N.D.
108	Lead dinitrate	10099-74-8	233-245-9	50	N.D.
109	Lead cyanamidate	20837-86-9	244-073-9	50	N.D.
110	Lead bis(tetrafluoroborate)	13814-96-5	237-486-0	50	N.D.
111	Hexahydromethylphthalic anhydride, Hexahydro-4-methylphthalic anhydride, Hexahydro-1-methylphthalic anhydride, Hexahydro-3-methylphthalic anhydride	25550-51-0, 19438-60-9, 48122-14-1, 57110-29-9	247-094-1, 243-072-0, 256-356-4, 260-566-1	50	N.D.
112	Heptacosafuorotetradecanoic acid	376-06-7	206-803-4	50	N.D.
113	Henicosafuoroundecanoic acid	2058-94-8	218-165-4	50	N.D.
114	Furan	110-00-9	203-727-3	50	N.D.
115	Fatty acids, C16-18, lead salts	91031-62-8	292-966-7	50	N.D.
116	Dioxobis(stearato)trilead	12578-12-0	235-702-8	50	N.D.



Shenzhen LCS Compliance Testing Laboratory Ltd.

Add: Unit F-G, Floor 23, Kechuang Building, Quanzhi Innovation Science and Technology Park, Shajing Town, Bao'an District, Shenzhen, Guangdong, China

Tel: (86)755-23353209

Internet: [Http://www.LCS-cert.com](http://www.LCS-cert.com)

Report No.: LCS180906028AR

No.	Items	CAS No.	EC No.	MDL(mg/kg)	Total(mg/kg)
117	Dinoseb (6-sec-butyl-2,4-dinitrophenol)	88-85-7	201-861-7	50	N.D.
118	Dimethyl sulphate	77-78-1	201-058-1	50	N.D.
119	Diisopentyl phthalate	605-50-5	210-088-4	50	N.D.
120	Diethyl sulphate	64-67-5	200-589-6	50	N.D.
121	Dibutyltin dichloride (DBTC)	683-18-1	211-670-0	50	N.D.
122	Diazene-1,2-dicarboxamide (C,C'-azodi(formamide)) (ADCA)	123-77-3	204-650-8	50	N.D.
123	Cyclohexane-1,2-dicarboxylic anhydride, cis-cyclohexane-1,2-dicarboxylic anhydride, trans-cyclohexane-1,2-dicarboxylic anhydride	85-42-7, 13149-00-3, 14166-21-3	201-604-9, 236-086-3, 238-009-9	50	N.D.
124	Bis(pentabromophenyl) ether (decabromodiphenyl ether) (DecaBDE)	1163-19-5	214-604-9	50	N.D.
125	Biphenyl-4-ylamine	92-67-1	202-177-1	50	N.D.
126	Acetic acid, lead salt, basic	51404-69-4	257-175-3	50	N.D.
127	[Phthalato(2-)]dioxotrilead	69011-06-9	273-688-5	50	N.D.
128	6-methoxy-m-toluidine (p-cresidine)	120-71-8	204-419-1	50	N.D.
129	4-Nonylphenol, branched and linear	-	-	50	N.D.
130	4-methyl-m-phenylenediamine (toluene-2,4-diamine)	95-80-7	202-453-1	50	N.D.
131	4-aminoazobenzene	(60-09-3)	200-453-6	50	N.D.
132	4-(1,1,3,3-tetramethylbutyl)phenol, ethoxylated covering well-defined substances and UVCB substances, polymers and homologues	-	-	50	N.D.
133	4,4'-oxydianiline and its salts	-	-	50	N.D.
134	4,4'-oxydianiline	101-80-4	202-977-0	50	N.D.
135	4,4'-methylenedi-o-toluidine	838-88-0	212-658-8	50	N.D.
136	3-ethyl-2-methyl-2-(3-methylbutyl)-1,3-oxazol idine	143860-04-2	421-150-7	50	N.D.
137	1,2-diethoxyethane	629-14-1	211-076-1	50	N.D.
138	1,2-Benzenedicarboxylic acid, dipentyl ester, branched and linear	84777-06-0	284-032-2	50	N.D.
139	Pentadecafluorooctanoic acid (PFOA)	335-67-1	206-397-9	50	N.D.
140	Dipentyl phthalate (DPP)	131-18-0	205-017-9	50	N.D.
141	Cadmium oxide	1306-19-0	215-146-2	50	N.D.



Shenzhen LCS Compliance Testing Laboratory Ltd.

Add: Unit F-G, Floor 23, Kechuang Building, Quanzhi Innovation Science and Technology Park, Shajing Town, Bao'an District, Shenzhen, Guangdong, China

Tel: (86)755-23353209

Internet: [Http://www.LCS-cert.com](http://www.LCS-cert.com)

Report No.: LCS180906028AR

No.	Items	CAS No.	EC No.	MDL(mg/kg)	Total(mg/kg)
142	Cadmium	7440-43-9	231-152-8	50	N.D.
143	Ammonium pentadecafluorooctanoate (APFO)	3825-26-1	223-320-4	50	N.D.
144	4-Nonylphenol, branched and linear, ethoxylated (substances with a linear and/or branched alkyl chain with a carbon number of 9 covalently bound in position 4 to phenol, ethoxylated covering UVCB- and well-defined substances, polymers and homologues, which include any of the individual isomers and/or combinations thereof)	-	-	50	N.D.
145	Trixylyl phosphate	25155-23-1	246-677-8	50	N.D.
146	Lead di(acetate)	301-04-2	206-104-4	50	N.D.
147	Imidazolidine-2-thione (2-imidazoline-2-thiol)	96-45-7	202-506-9	50	N.D.
148	Disodium 4-amino-3-[[4'-[(2,4-diaminophenyl)azo][1,1'-biphenyl]-4-yl]azo]-5-hydroxy-6-(phenylazo)naphthalene-2,7-disulphonate (C.I. Direct Black 38)	1937-37-7	217-710-3	50	N.D.
149	Disodium 3,3'-[[1,1'-biphenyl]-4,4'-diylbis(azo)]bis(4-aminonaphthalene-1-sulphonate) (C.I. Direct Red 28)	573-58-0	209-358-4	50	N.D.
150	Dihexyl phthalate	84-75-3	201-559-5	50	N.D.
151	Cadmium sulphide	1306-23-6	215-147-8	50	N.D.
152	Sodium peroxometaborate	(7632-04-4)	231-556-4	50	N.D.
153	Sodium perborate, perboric acid, sodium salt	15120-21-5, 11138-47-9	239-172-9, 234-390-0	50	N.D.
154	Cadmium chloride	10108-64-2	233-296-7	50	N.D.
155	1,2-Benzenedicarboxylic acid, dihexyl ester, branched and linear	68515-50-4	271-093-5	50	N.D.



Shenzhen LCS Compliance Testing Laboratory Ltd.

Add: Unit F-G, Floor 23, Kechuang Building, Quanzhi Innovation Science and Technology Park, Shajing Town, Bao'an District, Shenzhen, Guangdong, China

Tel: (86)755-23353209

Internet: [Http://www.LCS-cert.com](http://www.LCS-cert.com)

Report No.: LCS180906028AR

No.	Items	CAS No.	EC No.	MDL(mg/kg)	Total(mg/kg)
156	Reaction mass of 2-ethylhexyl 10-ethyl-4,4-dioctyl-7-oxo-8-oxa-3,5-dithia-4-stannatetradecanoate and 2-ethylhexyl 10-ethyl-4-[[2-[(2-ethylhexyl)oxy]-2-oxoethyl]thio]-4-octyl-7-oxo-8-oxa-3,5-dithia-4-stannatetradecanoate (reaction mass of DOTE and MOTE)	-	-	50	N.D.
157	Cadmium sulphate	10124-36-4, 31119-53-6	233-331-6	50	N.D.
158	Cadmium fluoride	7790-79-6	232-222-0	50	N.D.
159	2-ethylhexyl 10-ethyl-4,4-dioctyl-7-oxo-8-oxa-3,5-dithia-4-stannatetradecanoate (DOTE)	15571-58-1	239-622-4	50	N.D.
160	2-benzotriazol-2-yl-4,6-di-tert-butylphenol (UV-320)	3846-71-7	223-346-6	50	N.D.
161	2-(2H-benzotriazol-2-yl)-4,6-ditertpentyl phenol (UV-328)	25973-55-1	247-384-8	50	N.D.
162	5-sec-butyl-2-(2,4-dimethylcyclohex-3-en-1-yl)-5-methyl-1,3-dioxane [1], 5-sec-butyl-2-(4,6-dimethylcyclohex-3-en-1-yl)-5-methyl-1,3-dioxane [2] covering any of the individual stereoisomers of [1] and [2] or any combination thereof 5-sec-butyl-2-(4,6-dimethylcyclohex-3-en-1-yl)-5-methyl-1,3-dioxane	-	-	50	N.D.
163	1,2-benzenedicarboxylic acid, di-C6-10-alkyl esters or mixed decyl and hexyl and octyl diesters, 1,2-Benzenedicarboxylic acid, mixed decyl and hexyl and octyl diesters, 1,2-Benzenedicarboxylic acid, di-C6-10-alkyl esters	68648-93-1, 68515-51-5	272-013-1, 271-094-0	50	N.D.
164	Perfluorononan-1-ic-acid and its sodium and ammonium salts	375-95-1 21049-39-8 4149-60-4	206-801-3	50	N.D.
165	Nitrobenzene	98-95-3	202-716-0	50	N.D.
166	2-(2H-benzotriazol-2-yl)-4-(tert-butyl)-6-(sec-butyl)phenol (UV-350)	36437-37-3	253-037-1	50	N.D.
167	2,4-di-tert-butyl-6-(5-chlorobenzotriazol-2-yl)phenol (UV-327)	3864-99-1	223-383-8	50	N.D.
168	1,3-propanesultone	1120-71-4	214-317-9	50	N.D.
169	Benzo[def]chrysene (Benzo[a]pyrene)	50-32-8	200-028-5	50	N.D.



Shenzhen LCS Compliance Testing Laboratory Ltd.

Add: Unit F-G, Floor 23, Kechuang Building, Quanzhi Innovation Science and Technology Park, Shajing Town, Bao'an District, Shenzhen, Guangdong, China

Tel: (86)755-23353209

Internet: [Http://www.LCS-cert.com](http://www.LCS-cert.com)

Report No.: LCS180906028AR

No.	Items	CAS No.	EC No.	MDL(mg/kg)	Total(mg/kg)
170	p-(1,1-dimethylpropyl)phenol	80-46-6	201-280-9	50	N.D.
171	4,4'-isopropylidenediphenol Bisphenol A; BPA	80-05-7	201-245-8	50	N.D.
172	Nonadecafluorodecanoic acid (PFDA) and its sodium and ammonium salts	335-76-2, 3830-45-3, 3108-42-7	206-400-3, - 221-470-5	50	N.D.
173	4-heptylphenol, branched and linear	-	-	50	N.D.
174	Perfluorohexane-1-sulphonic acid and its salts PFHxS	-	-	50	N.D.
175	Dechlorane[including all trans and cis isomers and their combinations]	-	-	50	N.D.
176	Reaction products of 1,3,4-thiadiazolidine-2,5-dithione, formaldehyde and 4-heptylphenol, branched and linear (RP-HP)	-	-	50	N.D.
177	Chrysene	218-01-9, 1719-03-5	205-923-4	50	N.D.
178	Cadmium nitrate	10022-68-1, 10325-94-7	233-710-6	50	N.D.
179	Cadmium hydroxide	21041-95-2	244-168-5	50	N.D.
180	Cadmium carbonate	513-78-0	208-168-9	50	N.D.
181	Benz[a]anthracene	56-55-3, 1718-53-2	200-280-6	50	N.D.
182	Terphenyl, hydrogenated	61788-32-7	262-967-7	50	N.D.
183	Octamethylcyclotetrasiloxane(D4)	556-67-2	209-136-7	50	N.D.
184	Lead	7439-92-1	231-100-4	50	N.D.
185	Ethylenediamine(EDA)	107-15-3	203-468-6	50	N.D.
186	Dodecamethylcyclohexasiloxane(D6)	540-97-6	208-762-8	50	N.D.
187	Disodium octaborate	12008-41-2	234-541-0	50	N.D.
188	Dicyclohexyl phthalate (DCHP)	84-61-7	201-545-9	50	N.D.
189	Decamethylcyclopentasiloxane (D5)	541-02-6	208-764-9	50	N.D.
190	Benzo[ghi]perylene	191-24-2	205-883-8	50	N.D.
191	Benzene-1,2,4-tricarboxylic acid 1,2 anhydride	552-30-7	209-008-0	50	N.D.



Shenzhen LCS Compliance Testing Laboratory Ltd.

Add: Unit F-G, Floor 23, Kechuang Building, Quanzhi Innovation Science and Technology Park, Shajing Town, Bao'an District, Shenzhen, Guangdong, China

Tel: (86)755-23353209

Internet: [Http://www.LCS-cert.com](http://www.LCS-cert.com)

Report No.: LCS180906028AR

Tested part(s):

- (1) Mixture of all plastic;
- (2) Mixture of all metal.

Note:

- N.D. = Not Detected or less than MDL
 - 0.1%=1000mg/kg
 - Carcinogenic, Mutagenic or toxic to Reproduction (CMR), meeting the criteria for classification in category 1 or 2 in accordance with Directive 67/548/EEC, Persistent, Bioaccumulative and Toxic (PBT) or very Persistent and very Bioaccumulative (vPvB) according to the criteria in Annex of XIII of the REACH Regulation, and/or Identified, on a case-by-case basis, from scientific evidence as causing probable serious effects to human health or the environment of an equivalent level of concern as those above (e.g. endocrine disruptors)
 - * = Calculated concentration of Cobalt Dichloride(CoCl₂) is based on the identified heavy metal and anion result. Calculated concentration of Diarsenic Pentoxide(As₂O₅), Diarsenic Trioxide(As₂O₃), Sodium Dichromate, Dihydrate, Lead Hydrogen Arsenate, Boric acid, Sodium chromate, Potassium chromate, and Triethyl Arsenate etc. are based on the identified metal and anion result. Identity of above metal substances present in the article has to be further confirmed.
 - ** = Calculated concentration of bis(tributyltin)oxide TBTO is based on the identified tributyltin, TBT results. The result is a screening test of TBTO and can cover TBTO and other salts under current technologies. Further investigation is required if the exact amount of TBTO has to be determined.
 - *** = Calculated concentration of these coal-tar products is based on the identified polycyclic aromatic hydrocarbons (PAHs) and heterocyclic compounds
 - **** = Calculated concentration of these Aluminosilicate and Zirconia Aluminosilicate is based on the identified aluminum and zirconium results by ICP-AES
- http://echa.europa.eu/chem_data/authorisation_process/candidate_list_table_en.asp

If a SVHC is found over the reporting limit, client is suggested to identify the component which contains the SVHC and the exact concentration of the SVHC by requesting further quantitative analysis from the laboratory

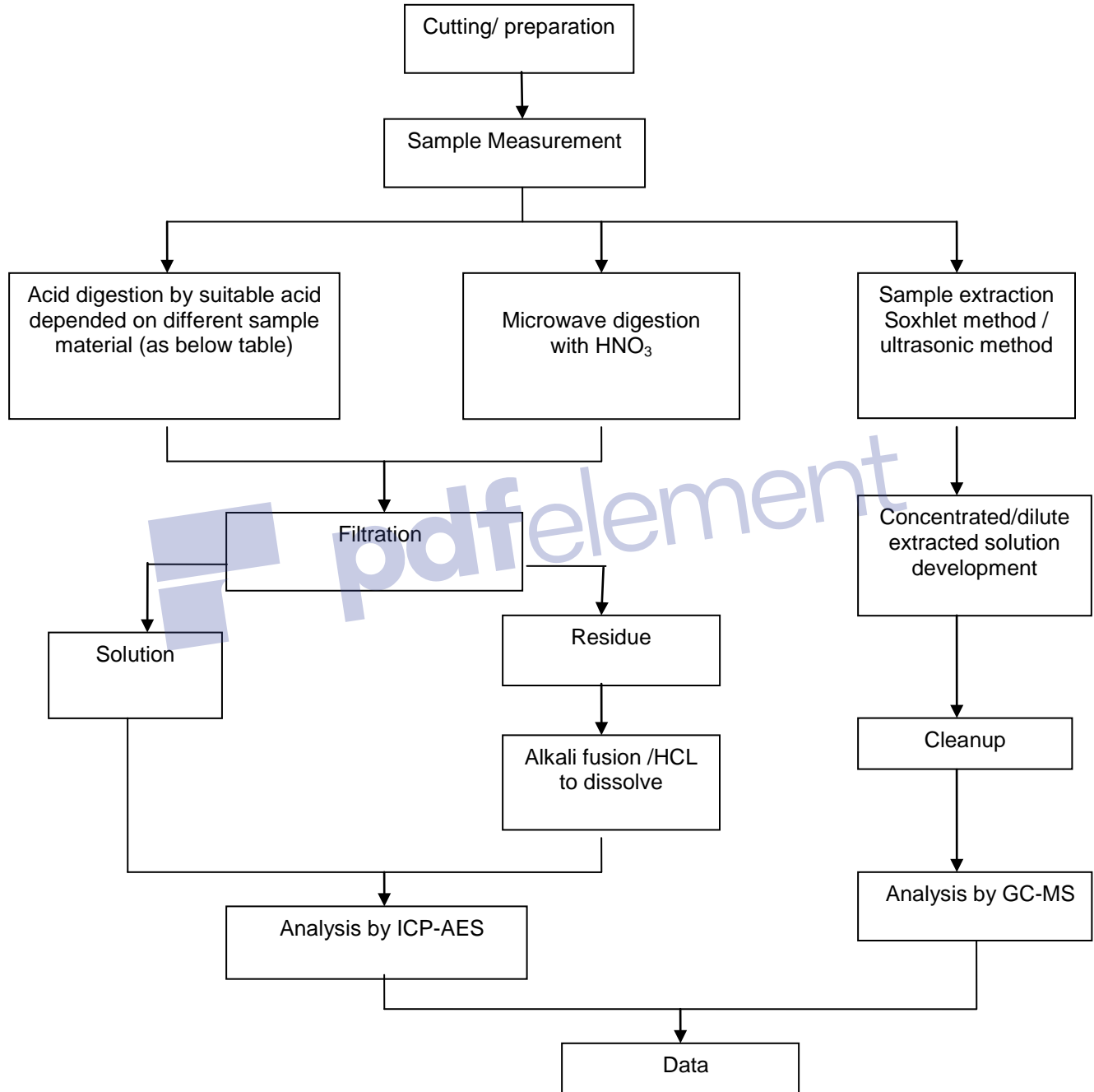
= Mixed, The admixture of specimen is tested as a whole(part) which according to the applicant's request, the result of report as a average value because of the whole specimen is regarded as constituting from the homogeneous material. If according to the provision, the testing of specimen may have the obvious difference, and the result may exceed the number in this report. The applicant will undertake all differences and risk. Flow chart appendix is included.

Photo appendix is included.

This report cites data from LCS180817039AR.



Appendix





Shenzhen LCS Compliance Testing Laboratory Ltd.

Add: Unit F-G, Floor 23, Kechuang Building, Quanzhi Innovation Science and Technology Park, Shajing Town, Bao'an District, Shenzhen, Guangdong, China

Tel: (86)755-23353209

Internet: [Http://www.LCS-cert.com](http://www.LCS-cert.com)

Report No.: LCS180906028AR

Appendix II Photograph of Sample





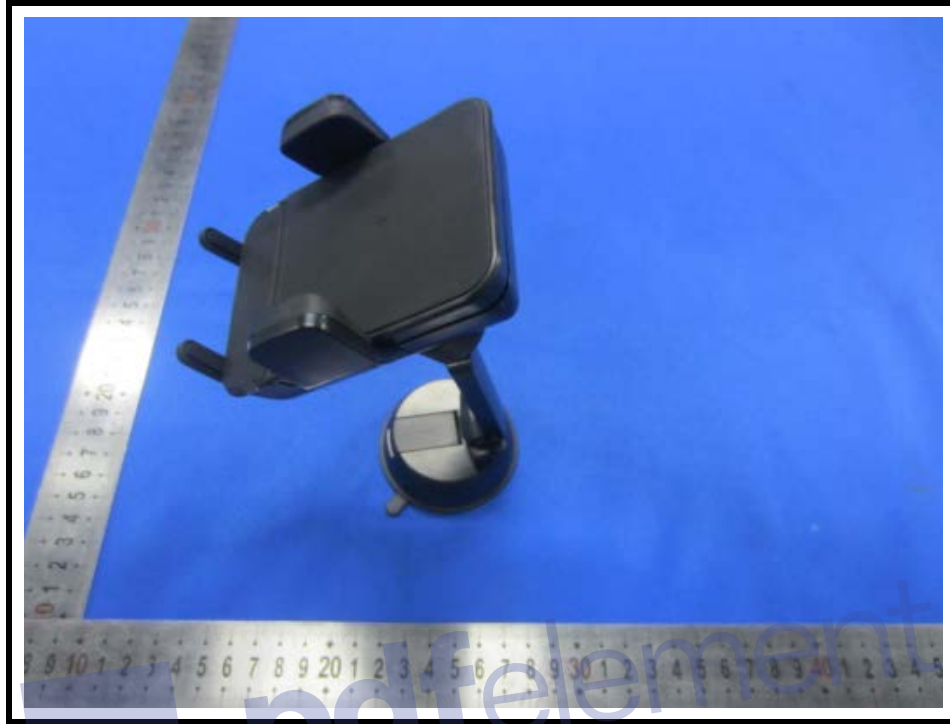
Shenzhen LCS Compliance Testing Laboratory Ltd.

Add: Unit F-G, Floor 23, Kechuang Building, Quanzhi Innovation Science and Technology Park, Shajing Town, Bao'an District, Shenzhen, Guangdong, China

Tel: (86)755-23353209

Internet: [Http://www.LCS-cert.com](http://www.LCS-cert.com)

Report No.: LCS180906028AR



LCS authenticate the photo on original report only

*** End of Report ***

The test report is effective only with both signature and specialized stamp. The result(s) shown in this report refer only to the sample(s) tested. Without written approval of LCS, this report can't be reproduced except in full.



CERTIFICATE of Conformity

Reference No. : LCS180906027AR

Applicant : CAR PARTS DESIGN TRADING CO., LTD.

Address : 21/F, Tai Yau Building, 181 Johnston Road, Wanchai, Hong Kong

Sample Name : Wireless Car Charger

Trade Mark : KODAK

Style/ Item No. : UC101, UC102, UC103

The submitted products have been tested by us with the listed standards and found in compliance with the following European Directives:

The RoHS Directive 2011/65/EU and its amendment directives EU 863/2015

**IEC 62321-3-1:2013 IEC 62321-5:2013 IEC 62321-4:2013+AMD1:2017 CSV
IEC 62321-6:2015 IEC 62321-7-1:2015 IEC 62321-7-2:2017 IEC 62321-8:2015**

The tests were performed in normal operation mode. The test results apply only to the particular sample tested and to the specific tests carried out. This certificate applies specifically to the sample investigated in our test reference number only.

The RoHS markings as shown below can be affixed on the product after preparation of necessary technical documentation.

Other relevant Directives have to be observed.

RoHS

Date of issue: September 21, 2018



Manager

Shenzhen LCS Compliance Testing Laboratory Ltd.
Unit F-G, Floor 23, Kechuang Building, Quanzhi Innovation Science and Technology Park, Shajing Town,
Bao'an District, Shenzhen, Guangdong, China
Tel: (86)755-23353209 Http://www.lcs-cert.com Email: webmaster@lcs-cert.com





Shenzhen LCS Compliance Testing Laboratory Ltd.
 Add: Unit F-G, Floor 23, Kechuang Building, Quanzhi Innovation Science and Technology Park,
 Shajing Town, Bao'an District, Shenzhen, Guangdong, China
 Tel: (86)755-23353209 Internet: Http://www.LCS-cert.com

Report No.: LCS180906027AR

TEST REPORT

Client company : CAR PARTS DESIGN TRADING CO., LTD.
Client address : 21/F, Tai Yau Building, 181 Johnston Road, Wanchai, Hong Kong
Manufacturer : RITS ELECTRONICS(SHENZHEN) CO., LTD.
Address : ChengJian Industrial Zone-F, Lingxia Road#1, Fenghuang Chun, Fuyong District, Baoan Zone, Shenzhen City, GD, China

Report on the submitted samples said to be:

Sample Name : Wireless Car Charger
Trade Mark : KODAK
Style/ Item No. : UC101, UC102, UC103
Sample Receiving Date : August 17, 2018
Testing Period : August 17, 2018 ~ September 21, 2018
Results : Please refer to next page(s).

TEST REQUEST

According to the customer's request, based on the performed tests on submitted sample, the results of lead(Pb), mercury(Hg), cadmium(Cd), hexavalent chromium(Cr⁶⁺), polybrominated biphenyls(PBBs), polybrominated diphenyl(PBDEs), (BBP), (DBP), (DEHP), (DIBP), comply with the limits as set by EU RoHS Directive 2011/65/EU and its amendment Directives 2015/863/EU

Signed for and on behalf of LCS

Written By: Linda Ning
 Linda Ning

Checked by: Suez Su
 Suez Su

Approved by: Lily Dan
 Lily Dan





Shenzhen LCS Compliance Testing Laboratory Ltd.
Add: Unit F-G, Floor 23, Kechuang Building, Qianzhi Innovation Science and Technology Park,
Shajing Town, Bao'an District, Shenzhen, Guangdong, China
Tel: (86)755-23353209 Internet: Http://www.LCS-cert.com

Report No.: LCS180906027AR

Results:

Test method:

With reference to IEC 62321-3-1:2013, Screening by X-ray Fluorescence Spectroscopy (XRF)

Lead & Cadmium Content:

With reference to IEC 62321-5:2013, by acid digestion and analysis was performed by inductively coupled plasma atomic emission spectrometer (ICP-OES)

Mercury Content:

With reference to IEC 62321-4:2013+AMD1:2017 CSV, by acid digestion and analysis was performed by inductively coupled plasma atomic emission spectrometer (ICP-OES)

Hexavalent Chromium Content:

With reference to IEC 62321-7-1:2015 or IEC 62321-7-2:2017, by alkaline digestion and analysis was performed by UV-visible spectrophotometer (UV-Vis)

PBBs & PBDEs Content:

With reference to IEC 62321-6:2015, by solvent extraction and analysis was performed by gas chromatographic-mass spectrometer (GC-MS)

BBP DBP DEHP & DIBP Content:

With reference to IEC 62321-8:2015, by solvent extraction and analysis was performed by gas chromatographic-mass spectrometer (GC-MS)

pdfelement



Shenzhen LCS Compliance Testing Laboratory Ltd.
 Add: Unit F-G, Floor 23, Kechuang Building, Quanzhi Innovation Science and Technology Park,
 Shajing Town, Bao'an District, Shenzhen, Guangdong, China
 Tel: (86)755-23353209 Internet: Http://www.LCS-cert.com

Report No.: LCS180906027AR

No.	Sample	Tested Item	XRF Screening results	Chemical test results (mg/kg)	Conclusion	Date of sample submission/resubmission
01	Black plastic sheet (shell)	Lead (Pb)	BL	/	PASS	2018-08-17
		Cadmium Content (Cd)	BL	/		
		Mercury (Hg)	BL	/		
		Hexavalent Chromium (Cr ⁶⁺)	BL	/		
		PBBs	BL	/		
		PBDEs	BL	/		
02	White plastic sheet	Lead (Pb)	BL	/	PASS	2018-08-17
		Cadmium Content (Cd)	BL	/		
		Mercury (Hg)	BL	/		
		Hexavalent Chromium (Cr ⁶⁺)	BL	/		
		PBBs	BL	/		
		PBDEs	BL	/		
03	Silver needle	Lead (Pb)	BL	/	PASS	2018-08-17
		Cadmium Content (Cd)	BL	/		
		Mercury (Hg)	BL	/		
		Hexavalent Chromium (Cr ⁶⁺)	BL	/		
		PBBs	BL	/		
		PBDEs	BL	/		
04	Silver metal spring	Lead (Pb)	BL	/	PASS	2018-08-17
		Cadmium Content (Cd)	BL	/		
		Mercury (Hg)	BL	/		
		Hexavalent Chromium (Cr ⁶⁺)	BL	/		
		PBBs	BL	/		
		PBDEs	BL	/		
05	Black plastic sheet (switch)	Lead (Pb)	BL	/	PASS	2018-08-17
		Cadmium Content (Cd)	BL	/		
		Mercury (Hg)	BL	/		
		Hexavalent Chromium (Cr ⁶⁺)	BL	/		
		PBBs	BL	/		
		PBDEs	BL	/		
06	Pale yellow plastic sheet	Lead (Pb)	BL	/	PASS	2018-08-17
		Cadmium Content (Cd)	BL	/		
		Mercury (Hg)	BL	/		
		Hexavalent Chromium (Cr ⁶⁺)	BL	/		
		PBBs	BL	/		
		PBDEs	BL	/		



Shenzhen LCS Compliance Testing Laboratory Ltd.

Add: Unit F-G, Floor 23, Kechuang Building, Quanzhi Innovation Science and Technology Park, Shajing Town, Bao'an District, Shenzhen, Guangdong, China

Tel: (86)755-23353209

Internet: [Http://www.LCS-cert.com](http://www.LCS-cert.com)

Report No.: LCS180906027AR

No.	Sample	Tested Item	XRF Screening results	Chemical test results (mg/kg)	Conclusion	Date of sample submission/resubmission
07	Transparent plastic sheet	Lead (Pb)	BL	/	PASS	2018-08-17
		Cadmium Content (Cd)	BL	/		
		Mercury (Hg)	BL	/		
		Hexavalent Chromium (Cr ⁶⁺)	BL	/		
		PBBs	BL	/		
		PBDEs	BL	/		
08	Black plastic sheet	Lead (Pb)	BL	/	PASS	2018-08-17
		Cadmium Content (Cd)	BL	/		
		Mercury (Hg)	BL	/		
		Hexavalent Chromium (Cr ⁶⁺)	BL	/		
		PBBs	BL	/		
		PBDEs	BL	/		
09	Black plastic sheet	Lead (Pb)	BL	/	PASS	2018-08-17
		Cadmium Content (Cd)	BL	/		
		Mercury (Hg)	BL	/		
		Hexavalent Chromium (Cr ⁶⁺)	BL	/		
		PBBs	BL	/		
		PBDEs	BL	/		
10	Black plastic sheet	Lead (Pb)	BL	/	PASS	2018-08-17
		Cadmium Content (Cd)	BL	/		
		Mercury (Hg)	BL	/		
		Hexavalent Chromium (Cr ⁶⁺)	BL	/		
		PBBs	BL	/		
		PBDEs	BL	/		
11	Black plastic sheet	Lead (Pb)	BL	/	PASS	2018-08-17
		Cadmium Content (Cd)	BL	/		
		Mercury (Hg)	BL	/		
		Hexavalent Chromium (Cr ⁶⁺)	BL	/		
		PBBs	BL	/		
		PBDEs	BL	/		
12	Black plastic sheet	Lead (Pb)	BL	/	PASS	2018-08-17
		Cadmium Content (Cd)	BL	/		
		Mercury (Hg)	BL	/		
		Hexavalent Chromium (Cr ⁶⁺)	BL	/		
		PBBs	BL	/		
		PBDEs	BL	/		



Shenzhen LCS Compliance Testing Laboratory Ltd.

Add: Unit F-G, Floor 23, Kechuang Building, Quanzhi Innovation Science and Technology Park, Shajing Town, Bao'an District, Shenzhen, Guangdong, China

Tel: (86)755-23353209

Internet: [Http://www.LCS-cert.com](http://www.LCS-cert.com)

Report No.: LCS180906027AR

No.	Sample	Tested Item	XRF Screening results	Chemical test results (mg/kg)	Conclusion	Date of sample submission/resubmission
13	Gold wire	Lead (Pb)	BL	/	PASS	2018-08-17
		Cadmium Content (Cd)	BL	/		
		Mercury (Hg)	BL	/		
		Hexavalent Chromium (Cr ⁶⁺)	BL	/		
		PBBs	BL	/		
		PBDEs	BL	/		
14	White cotton thread	Lead (Pb)	BL	/	PASS	2018-08-17
		Cadmium Content (Cd)	BL	/		
		Mercury (Hg)	BL	/		
		Hexavalent Chromium (Cr ⁶⁺)	BL	/		
		PBBs	BL	/		
		PBDEs	BL	/		
15	Blue plastic sheet	Lead (Pb)	BL	/	PASS	2018-08-17
		Cadmium Content (Cd)	BL	/		
		Mercury (Hg)	BL	/		
		Hexavalent Chromium (Cr ⁶⁺)	BL	/		
		PBBs	BL	/		
		PBDEs	BL	/		
16	Black ceramic sheet	Lead (Pb)	BL	/	PASS	2018-08-17
		Cadmium Content (Cd)	BL	/		
		Mercury (Hg)	BL	/		
		Hexavalent Chromium (Cr ⁶⁺)	BL	/		
		PBBs	BL	/		
		PBDEs	BL	/		
17	Red metal wire	Lead (Pb)	BL	/	PASS	2018-08-17
		Cadmium Content (Cd)	BL	/		
		Mercury (Hg)	BL	/		
		Hexavalent Chromium (Cr ⁶⁺)	BL	/		
		PBBs	BL	/		
		PBDEs	BL	/		
18	Black IED	Lead (Pb)	BL	/	PASS	2018-08-17
		Cadmium Content (Cd)	BL	/		
		Mercury (Hg)	BL	/		
		Hexavalent Chromium (Cr ⁶⁺)	BL	/		
		PBBs	BL	/		
		PBDEs	BL	/		



Shenzhen LCS Compliance Testing Laboratory Ltd.

Add: Unit F-G, Floor 23, Kechuang Building, Quanzhi Innovation Science and Technology Park, Shajing Town, Bao'an District, Shenzhen, Guangdong, China

Tel: (86)755-23353209

Internet: [Http://www.LCS-cert.com](http://www.LCS-cert.com)

Report No.: LCS180906027AR

No.	Sample	Tested Item	XRF Screening results	Chemical test results (mg/kg)	Conclusion	Date of sample submission/resubmission
19	Black plastic pipe	Lead (Pb)	BL	/	PASS	2018-08-17
		Cadmium Content (Cd)	BL	/		
		Mercury (Hg)	BL	/		
		Hexavalent Chromium (Cr ⁶⁺)	BL	/		
		PBBs	BL	/		
		PBDEs	BL	/		
20	Red metal wire	Lead (Pb)	X	4500 ^{#3}	PASS	2018-08-17
		Cadmium Content (Cd)	BL	/		
		Mercury (Hg)	BL	/		
		Hexavalent Chromium (Cr ⁶⁺)	BL	/		
		PBBs	BL	/		
		PBDEs	BL	/		
21	Gold wire	Lead (Pb)	BL	/	PASS	2018-08-17
		Cadmium Content (Cd)	BL	/		
		Mercury (Hg)	BL	/		
		Hexavalent Chromium (Cr ⁶⁺)	BL	/		
		PBBs	BL	/		
		PBDEs	BL	/		
22	Cyan metal wire	Lead (Pb)	BL	/	PASS	2018-08-17
		Cadmium Content (Cd)	BL	/		
		Mercury (Hg)	BL	/		
		Hexavalent Chromium (Cr ⁶⁺)	BL	/		
		PBBs	BL	/		
		PBDEs	BL	/		
23	Blue metal wire	Lead (Pb)	BL	/	PASS	2018-08-17
		Cadmium Content (Cd)	BL	/		
		Mercury (Hg)	BL	/		
		Hexavalent Chromium (Cr ⁶⁺)	BL	/		
		PBBs	BL	/		
		PBDEs	BL	/		
24	White cotton thread	Lead (Pb)	BL	/	PASS	2018-08-17
		Cadmium Content (Cd)	BL	/		
		Mercury (Hg)	BL	/		
		Hexavalent Chromium (Cr ⁶⁺)	BL	/		
		PBBs	BL	/		
		PBDEs	BL	/		



Shenzhen LCS Compliance Testing Laboratory Ltd.

Add: Unit F-G, Floor 23, Kechuang Building, Quanzhi Innovation Science and Technology Park, Shajing Town, Bao'an District, Shenzhen, Guangdong, China

Tel: (86)755-23353209

Internet: [Http://www.LCS-cert.com](http://www.LCS-cert.com)

Report No.: LCS180906027AR

No.	Sample	Tested Item	XRF Screening results	Chemical test results (mg/kg)	Conclusion	Date of sample submission/resubmission
25	Silver sheet metal (USB-PCB 1)	Lead (Pb)	BL	/	PASS	2018-08-17
		Cadmium Content (Cd)	BL	/		
		Mercury (Hg)	BL	/		
		Hexavalent Chromium (Cr ⁶⁺)	BL	/		
		PBBs	BL	/		
		PBDEs	BL	/		
26	Black plastic sheet (USB-PCB 1)	Lead (Pb)	BL	/	PASS	2018-08-17
		Cadmium Content (Cd)	BL	/		
		Mercury (Hg)	BL	/		
		Hexavalent Chromium (Cr ⁶⁺)	BL	/		
		PBBs	BL	/		
		PBDEs	BL	/		
27	Gold metal needle (USB-PCB 1)	Lead (Pb)	BL	/	PASS	2018-08-17
		Cadmium Content (Cd)	BL	/		
		Mercury (Hg)	BL	/		
		Hexavalent Chromium (Cr ⁶⁺)	BL	/		
		PBBs	BL	/		
		PBDEs	BL	/		
28	Solder (PCB1)	Lead (Pb)	X	309	PASS	2018-08-17/ 2018-09-10
		Cadmium Content (Cd)	BL	/		
		Mercury (Hg)	BL	/		
		Hexavalent Chromium (Cr ⁶⁺)	BL	/		
		PBBs	BL	/		
		PBDEs	BL	/		
29	PCB board (PCB1)	Lead (Pb)	BL	/	PASS	2018-08-17
		Cadmium Content (Cd)	BL	/		
		Mercury (Hg)	BL	/		
		Hexavalent Chromium (Cr ⁶⁺)	BL	/		
		PBBs	BL	/		
		PBDEs	BL	/		
30	Solder (PCB2)	Lead (Pb)	BL	/	PASS	2018-08-17
		Cadmium Content (Cd)	BL	/		
		Mercury (Hg)	BL	/		
		Hexavalent Chromium (Cr ⁶⁺)	BL	/		
		PBBs	BL	/		
		PBDEs	BL	/		



Shenzhen LCS Compliance Testing Laboratory Ltd.

Add: Unit F-G, Floor 23, Kechuang Building, Quanzhi Innovation Science and Technology Park, Shajing Town, Bao'an District, Shenzhen, Guangdong, China

Tel: (86)755-23353209

Internet: Http://www.LCS-cert.com

Report No.: LCS180906027AR

No.	Sample	Tested Item	XRF Screening results	Chemical test results (mg/kg)	Conclusion	Date of sample submission/resubmission
31	Orange ceramic capacitor (PCB2)	Lead (Pb)	BL	/	PASS	2018-08-17
		Cadmium Content (Cd)	BL	/		
		Mercury (Hg)	BL	/		
		Hexavalent Chromium (Cr ⁶⁺)	BL	/		
		PBBs	BL	/		
		PBDEs	BL	/		
32	Black IC (PCB2)	Lead (Pb)	BL	/	PASS	2018-08-17
		Cadmium Content (Cd)	BL	/		
		Mercury (Hg)	BL	/		
		Hexavalent Chromium (Cr ⁶⁺)	BL	/		
		PBBs	BL	/		
		PBDEs	BL	/		
33	Patch diode (PCB2)	Lead (Pb)	BL	/	PASS	2018-08-17
		Cadmium Content (Cd)	BL	/		
		Mercury (Hg)	BL	/		
		Hexavalent Chromium (Cr ⁶⁺)	BL	/		
		PBBs	X	N.D.		
		PBDEs	X	N.D.		
34	Chip resistor (PCB2)	Lead (Pb)	BL	/	PASS	2018-08-17
		Cadmium Content (Cd)	BL	/		
		Mercury (Hg)	BL	/		
		Hexavalent Chromium (Cr ⁶⁺)	BL	/		
		PBBs	BL	/		
		PBDEs	BL	/		
35	Patch Transistor (PCB2)	Lead (Pb)	BL	/	PASS	2018-08-17
		Cadmium Content (Cd)	BL	/		
		Mercury (Hg)	BL	/		
		Hexavalent Chromium (Cr ⁶⁺)	BL	/		
		PBBs	BL	/		
		PBDEs	BL	/		
36	Chip resistor (PCB2)	Lead (Pb)	BL	/	PASS	2018-08-17
		Cadmium Content (Cd)	BL	/		
		Mercury (Hg)	BL	/		
		Hexavalent Chromium (Cr ⁶⁺)	X	N.D.		
		PBBs	BL	/		
		PBDEs	BL	/		



Shenzhen LCS Compliance Testing Laboratory Ltd.

Add: Unit F-G, Floor 23, Kechuang Building, Quanzhi Innovation Science and Technology Park, Shajing Town, Bao'an District, Shenzhen, Guangdong, China

Tel: (86)755-23353209

Internet: Http://www.LCS-cert.com

Report No.: LCS180906027AR

No.	Sample	Tested Item	XRF Screening results	Chemical test results (mg/kg)	Conclusion	Date of sample submission/resubmission
37	Solder (PCB2)	Lead (Pb)	X	309	PASS	2018-08-17/ 2018-09-10
		Cadmium Content (Cd)	BL	/		
		Mercury (Hg)	BL	/		
		Hexavalent Chromium (Cr ⁶⁺)	BL	/		
		PBBs	BL	/		
		PBDEs	BL	/		
38	PCB board (PCB2)	Lead (Pb)	BL	/	PASS	2018-08-17
		Cadmium Content (Cd)	BL	/		
		Mercury (Hg)	BL	/		
		Hexavalent Chromium (Cr ⁶⁺)	BL	/		
		PBBs	BL	/		
		PBDEs	BL	/		
39	Black metal screw	Lead (Pb)	BL	/	PASS	2018-08-17
		Cadmium Content (Cd)	BL	/		
		Mercury (Hg)	BL	/		
		Hexavalent Chromium (Cr ⁶⁺)	BL	/		
		PBBs	BL	/		
		PBDEs	BL	/		
40	Black metal screw	Lead (Pb)	BL	/	PASS	2018-08-17
		Cadmium Content (Cd)	BL	/		
		Mercury (Hg)	BL	/		
		Hexavalent Chromium (Cr ⁶⁺)	BL	/		
		PBBs	BL	/		
		PBDEs	BL	/		
41	Black plastic sheet (shell)	Lead (Pb)	BL	/	PASS	2018-08-17
		Cadmium Content (Cd)	BL	/		
		Mercury (Hg)	BL	/		
		Hexavalent Chromium (Cr ⁶⁺)	BL	/		
		PBBs	BL	/		
		PBDEs	BL	/		
42	Black plastic sheet	Lead (Pb)	BL	/	PASS	2018-08-17
		Cadmium Content (Cd)	BL	/		
		Mercury (Hg)	BL	/		
		Hexavalent Chromium (Cr ⁶⁺)	BL	/		
		PBBs	BL	/		
		PBDEs	BL	/		



Shenzhen LCS Compliance Testing Laboratory Ltd.

Add: Unit F-G, Floor 23, Kechuang Building, Quanzhi Innovation Science and Technology Park, Shajing Town, Bao'an District, Shenzhen, Guangdong, China

Tel: (86)755-23353209

Internet: Http://www.LCS-cert.com

Report No.: LCS180906027AR

No.	Sample	Tested Item	XRF Screening results	Chemical test results (mg/kg)	Conclusion	Date of sample submission/resubmission
43	Transparent plastic sheet	Lead (Pb)	BL	/	PASS	2018-08-17
		Cadmium Content (Cd)	BL	/		
		Mercury (Hg)	BL	/		
		Hexavalent Chromium (Cr ⁶⁺)	BL	/		
		PBBs	BL	/		
		PBDEs	BL	/		
44	Silver magnet	Lead (Pb)	BL	/	PASS	2018-08-17
		Cadmium Content (Cd)	BL	/		
		Mercury (Hg)	BL	/		
		Hexavalent Chromium (Cr ⁶⁺)	X	Negative		
		PBBs	BL	/		
		PBDEs	BL	/		
45	Gold wire	Lead (Pb)	BL	/	PASS	2018-08-17
		Cadmium Content (Cd)	BL	/		
		Mercury (Hg)	BL	/		
		Hexavalent Chromium (Cr ⁶⁺)	BL	/		
		PBBs	BL	/		
		PBDEs	BL	/		
46	White cotton thread	Lead (Pb)	BL	/	PASS	2018-08-17
		Cadmium Content (Cd)	BL	/		
		Mercury (Hg)	BL	/		
		Hexavalent Chromium (Cr ⁶⁺)	BL	/		
		PBBs	BL	/		
		PBDEs	BL	/		
47	Blue plastic sheet	Lead (Pb)	BL	/	PASS	2018-08-17
		Cadmium Content (Cd)	BL	/		
		Mercury (Hg)	BL	/		
		Hexavalent Chromium (Cr ⁶⁺)	BL	/		
		PBBs	BL	/		
		PBDEs	BL	/		
48	Black ceramic sheet	Lead (Pb)	BL	/	PASS	2018-08-17
		Cadmium Content (Cd)	BL	/		
		Mercury (Hg)	BL	/		
		Hexavalent Chromium (Cr ⁶⁺)	BL	/		
		PBBs	BL	/		
		PBDEs	BL	/		



Shenzhen LCS Compliance Testing Laboratory Ltd.

Add: Unit F-G, Floor 23, Kechuang Building, Quanzhi Innovation Science and Technology Park, Shajing Town, Bao'an District, Shenzhen, Guangdong, China

Tel: (86)755-23353209

Internet: Http://www.LCS-cert.com

Report No.: LCS180906027AR

No.	Sample	Tested Item	XRF Screening results	Chemical test results (mg/kg)	Conclusion	Date of sample submission/resubmission
49	Red metal wire	Lead (Pb)	BL	/	PASS	2018-08-17
		Cadmium Content (Cd)	BL	/		
		Mercury (Hg)	BL	/		
		Hexavalent Chromium (Cr ⁶⁺)	BL	/		
		PBBs	BL	/		
		PBDEs	BL	/		
50	Black LED	Lead (Pb)	BL	/	PASS	2018-08-17
		Cadmium Content (Cd)	BL	/		
		Mercury (Hg)	BL	/		
		Hexavalent Chromium (Cr ⁶⁺)	BL	/		
		PBBs	BL	/		
		PBDEs	BL	/		
51	Silver sheet metal (USB-PCB 2)	Lead (Pb)	BL	/	PASS	2018-08-17
		Cadmium Content (Cd)	BL	/		
		Mercury (Hg)	BL	/		
		Hexavalent Chromium (Cr ⁶⁺)	BL	/		
		PBBs	BL	/		
		PBDEs	BL	/		
52	Black plastic sheet (USB-PCB 2)	Lead (Pb)	BL	/	PASS	2018-08-17
		Cadmium Content (Cd)	BL	/		
		Mercury (Hg)	BL	/		
		Hexavalent Chromium (Cr ⁶⁺)	BL	/		
		PBBs	BL	/		
		PBDEs	BL	/		
53	Gold metal sheet (USB-PCB 2)	Lead (Pb)	BL	/	PASS	2018-08-17
		Cadmium Content (Cd)	BL	/		
		Mercury (Hg)	BL	/		
		Hexavalent Chromium (Cr ⁶⁺)	BL	/		
		PBBs	BL	/		
		PBDEs	BL	/		
54	Patch Transistor (PCB2)	Lead (Pb)	BL	/	PASS	2018-08-17
		Cadmium Content (Cd)	BL	/		
		Mercury (Hg)	BL	/		
		Hexavalent Chromium (Cr ⁶⁺)	BL	/		
		PBBs	BL	/		
		PBDEs	BL	/		



Shenzhen LCS Compliance Testing Laboratory Ltd.

Add: Unit F-G, Floor 23, Kechuang Building, Quanzhi Innovation Science and Technology Park, Shajing Town, Bao'an District, Shenzhen, Guangdong, China

Tel: (86)755-23353209

Internet: [Http://www.LCS-cert.com](http://www.LCS-cert.com)

Report No.: LCS180906027AR

No.	Sample	Tested Item	XRF Screening results	Chemical test results (mg/kg)	Conclusion	Date of sample submission/resubmission
55	Chip capacitor (PCB2)	Lead (Pb)	BL	/	PASS	2018-08-17
		Cadmium Content (Cd)	BL	/		
		Mercury (Hg)	BL	/		
		Hexavalent Chromium (Cr ⁶⁺)	BL	/		
		PBBs	BL	/		
		PBDEs	BL	/		
56	Orange ceramic capacitor (PCB2)	Lead (Pb)	BL	/	PASS	2018-08-17
		Cadmium Content (Cd)	BL	/		
		Mercury (Hg)	BL	/		
		Hexavalent Chromium (Cr ⁶⁺)	BL	/		
		PBBs	X	N.D.		
		PBDEs	X	N.D.		
57	Solder (PCB2)	Lead (Pb)	BL	/	PASS	2018-08-17
		Cadmium Content (Cd)	BL	/		
		Mercury (Hg)	BL	/		
		Hexavalent Chromium (Cr ⁶⁺)	BL	/		
		PBBs	BL	/		
		PBDEs	BL	/		
58	Chip resistor (PCB2)	Lead (Pb)	BL	/	PASS	2018-08-17
		Cadmium Content (Cd)	BL	/		
		Mercury (Hg)	BL	/		
		Hexavalent Chromium (Cr ⁶⁺)	X	N.D.		
		PBBs	BL	/		
		PBDEs	BL	/		
59	Black IC (PCB2)	Lead (Pb)	BL	/	PASS	2018-08-17
		Cadmium Content (Cd)	BL	/		
		Mercury (Hg)	BL	/		
		Hexavalent Chromium (Cr ⁶⁺)	BL	/		
		PBBs	BL	/		
		PBDEs	BL	/		
60	Patch diode (PCB2)	Lead (Pb)	BL	/	PASS	2018-08-17
		Cadmium Content (Cd)	BL	/		
		Mercury (Hg)	BL	/		
		Hexavalent Chromium (Cr ⁶⁺)	BL	/		
		PBBs	X	N.D.		
		PBDEs	X	N.D.		



Shenzhen LCS Compliance Testing Laboratory Ltd.

Add: Unit F-G, Floor 23, Kechuang Building, Quanzhi Innovation Science and Technology Park, Shajing Town, Bao'an District, Shenzhen, Guangdong, China

Tel: (86)755-23353209

Internet: Http://www.LCS-cert.com

Report No.: LCS180906027AR

No.	Sample	Tested Item	XRF Screening results	Chemical test results (mg/kg)	Conclusion	Date of sample submission/resubmission
61	PCB board (PCB2)	Lead (Pb)	BL	/	PASS	2018-08-17
		Cadmium Content (Cd)	BL	/		
		Mercury (Hg)	BL	/		
		Hexavalent Chromium (Cr ⁶⁺)	BL	/		
		PBBs	BL	/		
		PBDEs	BL	/		
62	Black metal screw	Lead (Pb)	BL	/	PASS	2018-08-17
		Cadmium Content (Cd)	BL	/		
		Mercury (Hg)	BL	/		
		Hexavalent Chromium (Cr ⁶⁺)	BL	/		
		PBBs	BL	/		
		PBDEs	BL	/		
63	Black plastic sheet (bracket 1)	Lead (Pb)	BL	/	PASS	2018-08-17
		Cadmium Content (Cd)	BL	/		
		Mercury (Hg)	BL	/		
		Hexavalent Chromium (Cr ⁶⁺)	BL	/		
		PBBs	BL	/		
		PBDEs	BL	/		
64	Black plastic sheet	Lead (Pb)	BL	/	PASS	2018-08-17
		Cadmium Content (Cd)	BL	/		
		Mercury (Hg)	BL	/		
		Hexavalent Chromium (Cr ⁶⁺)	BL	/		
		PBBs	BL	/		
		PBDEs	BL	/		
65	Black metal sheet (bracket 1)	Lead (Pb)	BL	/	PASS	2018-08-17
		Cadmium Content (Cd)	X	N.D.		
		Mercury (Hg)	BL	/		
		Hexavalent Chromium (Cr ⁶⁺)	BL	/		
		PBBs	BL	/		
		PBDEs	BL	/		
66	Silver metal flat mat (bracket 1)	Lead (Pb)	BL	/	PASS	2018-08-17
		Cadmium Content (Cd)	BL	/		
		Mercury (Hg)	BL	/		
		Hexavalent Chromium (Cr ⁶⁺)	BL	/		
		PBBs	BL	/		
		PBDEs	BL	/		



Shenzhen LCS Compliance Testing Laboratory Ltd.

Add: Unit F-G, Floor 23, Kechuang Building, Quanzhi Innovation Science and Technology Park, Shajing Town, Bao'an District, Shenzhen, Guangdong, China

Tel: (86)755-23353209

Internet: Http://www.LCS-cert.com

Report No.: LCS180906027AR

No.	Sample	Tested Item	XRF Screening results	Chemical test results (mg/kg)	Conclusion	Date of sample submission/resubmission
67	Black metal needle (bracket 1)	Lead (Pb)	BL	/	PASS	2018-08-17
		Cadmium Content (Cd)	BL	/		
		Mercury (Hg)	BL	/		
		Hexavalent Chromium (Cr ⁶⁺)	BL	/		
		PBBs	BL	/		
		PBDEs	BL	/		
68	Silver metal springs (bracket 1)	Lead (Pb)	BL	/	PASS	2018-08-17
		Cadmium Content (Cd)	BL	/		
		Mercury (Hg)	BL	/		
		Hexavalent Chromium (Cr ⁶⁺)	BL	/		
		PBBs	BL	/		
		PBDEs	BL	/		
69	Black plastic sheet (bracket 1)	Lead (Pb)	BL	/	PASS	2018-08-17
		Cadmium Content (Cd)	BL	/		
		Mercury (Hg)	BL	/		
		Hexavalent Chromium (Cr ⁶⁺)	BL	/		
		PBBs	BL	/		
		PBDEs	BL	/		
70	Black metal sheet (bracket 1)	Lead (Pb)	BL	/	PASS	2018-08-17
		Cadmium Content (Cd)	BL	/		
		Mercury (Hg)	BL	/		
		Hexavalent Chromium (Cr ⁶⁺)	X	Negative		
		PBBs	BL	/		
		PBDEs	BL	/		
71	Black plastic sheet (bracket 1)	Lead (Pb)	BL	/	PASS	2018-08-17
		Cadmium Content (Cd)	BL	/		
		Mercury (Hg)	BL	/		
		Hexavalent Chromium (Cr ⁶⁺)	BL	/		
		PBBs	BL	/		
		PBDEs	BL	/		
72	Black plastic sheet (bracket 1)	Lead (Pb)	BL	/	PASS	2018-08-17
		Cadmium Content (Cd)	BL	/		
		Mercury (Hg)	BL	/		
		Hexavalent Chromium (Cr ⁶⁺)	BL	/		
		PBBs	BL	/		
		PBDEs	BL	/		



Shenzhen LCS Compliance Testing Laboratory Ltd.

Add: Unit F-G, Floor 23, Kechuang Building, Quanzhi Innovation Science and Technology Park, Shajing Town, Bao'an District, Shenzhen, Guangdong, China

Tel: (86)755-23353209

Internet: Http://www.LCS-cert.com

Report No.: LCS180906027AR

No.	Sample	Tested Item	XRF Screening results	Chemical test results (mg/kg)	Conclusion	Date of sample submission/resubmission
73	Black plastic sheet (bracket 2)	Lead (Pb)	BL	/	PASS	2018-08-17
		Cadmium Content (Cd)	BL	/		
		Mercury (Hg)	BL	/		
		Hexavalent Chromium (Cr ⁶⁺)	BL	/		
		PBBs	X	N.D.		
		PBDEs	X	N.D.		
74	Black plastic sheet (bracket 2)	Lead (Pb)	BL	/	PASS	2018-08-17
		Cadmium Content (Cd)	BL	/		
		Mercury (Hg)	BL	/		
		Hexavalent Chromium (Cr ⁶⁺)	BL	/		
		PBBs	BL	/		
		PBDEs	BL	/		
75	Black plastic sheet (bracket 2)	Lead (Pb)	BL	/	PASS	2018-08-17
		Cadmium Content (Cd)	BL	/		
		Mercury (Hg)	BL	/		
		Hexavalent Chromium (Cr ⁶⁺)	BL	/		
		PBBs	BL	/		
		PBDEs	BL	/		
76	Black plastic sheet (bracket 2)	Lead (Pb)	BL	/	PASS	2018-08-17
		Cadmium Content (Cd)	BL	/		
		Mercury (Hg)	BL	/		
		Hexavalent Chromium (Cr ⁶⁺)	BL	/		
		PBBs	BL	/		
		PBDEs	BL	/		
77	White rubber (bracket 2)	Lead (Pb)	BL	/	PASS	2018-08-17
		Cadmium Content (Cd)	BL	/		
		Mercury (Hg)	BL	/		
		Hexavalent Chromium (Cr ⁶⁺)	BL	/		
		PBBs	BL	/		
		PBDEs	BL	/		
78	Transparent plastic sheet (bracket 2)	Lead (Pb)	BL	/	PASS	2018-08-17
		Cadmium Content (Cd)	BL	/		
		Mercury (Hg)	BL	/		
		Hexavalent Chromium (Cr ⁶⁺)	BL	/		
		PBBs	BL	/		
		PBDEs	BL	/		



Shenzhen LCS Compliance Testing Laboratory Ltd.
 Add: Unit F-G, Floor 23, Kechuang Building, Quanzhi Innovation Science and Technology Park,
 Shajing Town, Bao'an District, Shenzhen, Guangdong, China
 Tel: (86)755-23353209 Internet: Http://www.LCS-cert.com

Report No.: LCS180906027AR

No.	Sample	Tested Item	XRF Screening results	Chemical test results (mg/kg)	Conclusion	Date of sample submission/resubmission
79	Silver metal springs (bracket 2)	Lead (Pb)	BL	/	PASS	2018-08-17
		Cadmium Content (Cd)	BL	/		
		Mercury (Hg)	BL	/		
		Hexavalent Chromium (Cr ⁶⁺)	BL	/		
		PBBs	BL	/		
		PBDEs	BL	/		
80	Black plastic sheet (bracket 2)	Lead (Pb)	BL	/	PASS	2018-08-17
		Cadmium Content (Cd)	BL	/		
		Mercury (Hg)	BL	/		
		Hexavalent Chromium (Cr ⁶⁺)	BL	/		
		PBBs	BL	/		
		PBDEs	BL	/		
81	Black plastic sheet (bracket 3)	Lead (Pb)	BL	/	PASS	2018-08-17
		Cadmium Content (Cd)	BL	/		
		Mercury (Hg)	BL	/		
		Hexavalent Chromium (Cr ⁶⁺)	BL	/		
		PBBs	BL	/		
		PBDEs	BL	/		
82	Black plastic sheet (bracket 2)	Lead (Pb)	BL	/	PASS	2018-08-17
		Cadmium Content (Cd)	BL	/		
		Mercury (Hg)	BL	/		
		Hexavalent Chromium (Cr ⁶⁺)	BL	/		
		PBBs	BL	/		
		PBDEs	BL	/		
83	Black metal screw	Lead (Pb)	BL	/	PASS	2018-08-17
		Cadmium Content (Cd)	BL	/		
		Mercury (Hg)	BL	/		
		Hexavalent Chromium (Cr ⁶⁺)	BL	/		
		PBBs	BL	/		
		PBDEs	BL	/		
84	Black plastic sheet	Lead (Pb)	BL	/	PASS	2018-08-17
		Cadmium Content (Cd)	BL	/		
		Mercury (Hg)	BL	/		
		Hexavalent Chromium (Cr ⁶⁺)	BL	/		
		PBBs	BL	/		
		PBDEs	BL	/		



Shenzhen LCS Compliance Testing Laboratory Ltd.

Add: Unit F-G, Floor 23, Kechuang Building, Quanzhi Innovation Science and Technology Park, Shajing Town, Bao'an District, Shenzhen, Guangdong, China

Tel: (86)755-23353209

Internet: Http://www.LCS-cert.com

Report No.: LCS180906027AR

No.	Sample	Tested Item	XRF Screening results	Chemical test results (mg/kg)	Conclusion	Date of sample submission/resubmission
85	Silver sheet metal	Lead (Pb)	BL	/	PASS	2018-08-17
		Cadmium Content (Cd)	BL	/		
		Mercury (Hg)	BL	/		
		Hexavalent Chromium (Cr ⁶⁺)	X	Negative		
		PBBs	BL	/		
		PBDEs	BL	/		
86	Black plastic sheet	Lead (Pb)	BL	/	PASS	2018-08-17
		Cadmium Content (Cd)	BL	/		
		Mercury (Hg)	BL	/		
		Hexavalent Chromium (Cr ⁶⁺)	BL	/		
		PBBs	BL	/		
		PBDEs	BL	/		
87	White gelatin	Lead (Pb)	BL	/	PASS	2018-08-17
		Cadmium Content (Cd)	BL	/		
		Mercury (Hg)	BL	/		
		Hexavalent Chromium (Cr ⁶⁺)	BL	/		
		PBBs	BL	/		
		PBDEs	BL	/		
88	Transparent plastic sheet	Lead (Pb)	BL	/	PASS	2018-08-17
		Cadmium Content (Cd)	BL	/		
		Mercury (Hg)	BL	/		
		Hexavalent Chromium (Cr ⁶⁺)	BL	/		
		PBBs	BL	/		
		PBDEs	BL	/		
89	Silver metal spring	Lead (Pb)	BL	/	PASS	2018-08-17
		Cadmium Content (Cd)	BL	/		
		Mercury (Hg)	BL	/		
		Hexavalent Chromium (Cr ⁶⁺)	BL	/		
		PBBs	BL	/		
		PBDEs	BL	/		
90	Black plastic sheet	Lead (Pb)	BL	/	PASS	2018-08-17
		Cadmium Content (Cd)	BL	/		
		Mercury (Hg)	BL	/		
		Hexavalent Chromium (Cr ⁶⁺)	BL	/		
		PBBs	BL	/		
		PBDEs	BL	/		



Shenzhen LCS Compliance Testing Laboratory Ltd.
 Add: Unit F-G, Floor 23, Kechuang Building, Quanzhi Innovation Science and Technology Park,
 Shajing Town, Bao'an District, Shenzhen, Guangdong, China
 Tel: (86)755-23353209 Internet: Http://www.LCS-cert.com

Report No.: LCS180906027AR

No.	Sample	Tested Item	XRF Screening results	Chemical test results (mg/kg)	Conclusion	Date of sample submission/resubmission
91	Black plastic sheet	Lead (Pb)	BL	/	PASS	2018-08-17
		Cadmium Content (Cd)	BL	/		
		Mercury (Hg)	BL	/		
		Hexavalent Chromium (Cr ⁶⁺)	BL	/		
		PBBs	BL	/		
		PBDEs	BL	/		

B. The test results of DBP、BBP、DEHP & DIBP

Item	Unit	MDL	Results			Limit
			1+2+5	6+7+8	9+10	
Dibutyl Phthalate(DBP)	mg/kg	50	N.D.	N.D.	N.D.	1000 mg/kg
Benzylbutyl Phthalate(BBP)	mg/kg	50	N.D.	N.D.	N.D.	1000 mg/kg
Bis(2-ethylhexyl) Phthalate(DEHP)	mg/kg	50	N.D.	N.D.	N.D.	1000 mg/kg
Diisobutyl phthalate(DIBP)	mg/kg	50	N.D.	N.D.	N.D.	1000 mg/kg
Conclusion	/	/	Pass	Pass	Pass	/

Item	Unit	MDL	Results			Limit
			11+12+14	15+16+18	19+24+26	
Dibutyl Phthalate(DBP)	mg/kg	50	N.D.	N.D.	N.D.	1000 mg/kg
Benzylbutyl Phthalate(BBP)	mg/kg	50	N.D.	N.D.	N.D.	1000 mg/kg
Bis(2-ethylhexyl) Phthalate(DEHP)	mg/kg	50	N.D.	N.D.	N.D.	1000 mg/kg
Diisobutyl phthalate(DIBP)	mg/kg	50	N.D.	N.D.	N.D.	1000 mg/kg
Conclusion	/	/	Pass	Pass	Pass	/



Shenzhen LCS Compliance Testing Laboratory Ltd.

Add: Unit F-G, Floor 23, Kechuang Building, Quanzhi Innovation Science and Technology Park, Shajing Town, Bao'an District, Shenzhen, Guangdong, China

Tel: (86)755-23353209

Internet: [Http://www.LCS-cert.com](http://www.LCS-cert.com)

Report No.: LCS180906027AR

Item	Unit	MDL	Results			Limit
			29+32+33	34+35+36	38+41+42	
Dibutyl Phthalate(DBP)	mg/kg	50	N.D.	N.D.	N.D.	1000 mg/kg
Benzylbutyl Phthalate(BBP)	mg/kg	50	N.D.	N.D.	N.D.	1000 mg/kg
Bis(2-ethylhexyl) Phthalate(DEHP)	mg/kg	50	N.D.	N.D.	N.D.	1000 mg/kg
Diisobutyl phthalate(DIBP)	mg/kg	50	N.D.	N.D.	N.D.	1000 mg/kg
Conclusion	/	/	Pass	Pass	Pass	/

Item	Unit	MDL	Results			Limit
			43+46+47	48+50+52	54+55+56	
Dibutyl Phthalate(DBP)	mg/kg	50	N.D.	N.D.	N.D.	1000 mg/kg
Benzylbutyl Phthalate(BBP)	mg/kg	50	N.D.	N.D.	N.D.	1000 mg/kg
Bis(2-ethylhexyl) Phthalate(DEHP)	mg/kg	50	N.D.	N.D.	N.D.	1000 mg/kg
Diisobutyl phthalate(DIBP)	mg/kg	50	N.D.	N.D.	N.D.	1000 mg/kg
Conclusion	/	/	Pass	Pass	Pass	/

Item	Unit	MDL	Results			Limit
			58+59+60	61+63+64	69+71+72	
Dibutyl Phthalate(DBP)	mg/kg	50	N.D.	N.D.	N.D.	1000 mg/kg
Benzylbutyl Phthalate(BBP)	mg/kg	50	N.D.	N.D.	N.D.	1000 mg/kg
Bis(2-ethylhexyl) Phthalate(DEHP)	mg/kg	50	N.D.	N.D.	N.D.	1000 mg/kg
Diisobutyl phthalate(DIBP)	mg/kg	50	N.D.	N.D.	N.D.	1000 mg/kg
Conclusion	/	/	Pass	Pass	Pass	/



Shenzhen LCS Compliance Testing Laboratory Ltd.
 Add: Unit F-G, Floor 23, Kechuang Building, Quanzhi Innovation Science and Technology Park,
 Shajing Town, Bao'an District, Shenzhen, Guangdong, China
 Tel: (86)755-23353209 Internet: Http://www.LCS-cert.com

Report No.: LCS180906027AR

Item	Unit	MDL	Results			Limit
			73+74+75	76+77+78	80+81+82	
Dibutyl Phthalate(DBP)	mg/kg	50	N.D.	N.D.	N.D.	1000 mg/kg
Benzylbutyl Phthalate(BBP)	mg/kg	50	N.D.	N.D.	N.D.	1000 mg/kg
Bis(2-ethylhexyl) Phthalate(DEHP)	mg/kg	50	N.D.	N.D.	N.D.	1000 mg/kg
Diisobutyl phthalate(DIBP)	mg/kg	50	N.D.	N.D.	N.D.	1000 mg/kg
Conclusion	/	/	Pass	Pass	Pass	/

Item	Unit	MDL	Results		Limit
			84+86+87	88+90+91	
Dibutyl Phthalate(DBP)	mg/kg	50	N.D.	N.D.	1000 mg/kg
Benzylbutyl Phthalate(BBP)	mg/kg	50	N.D.	N.D.	1000 mg/kg
Bis(2-ethylhexyl) Phthalate(DEHP)	mg/kg	50	N.D.	N.D.	1000 mg/kg
Diisobutyl phthalate(DIBP)	mg/kg	50	N.D.	N.D.	1000 mg/kg
Conclusion	/	/	Pass	Pass	/

Note:

- i Results were obtained by XRF for primary screening, and further chemical testing by ICP (for Cd, Pb, Hg), UV-Vis (for Cr(VI)) and GC-MS (for PBBs, PBDEs) are recommended to be performed, if the concentration exceeds the below warning value according to IEC 62321-3-1:2013.

Element	Unit	Non-metal	Metal	Composite Material
Cd	mg/kg	$BL \leq 70 - 3\sigma < X < 130 + 3\sigma \leq OL$	$BL \leq 70 - 3\sigma < X < 130 + 3\sigma \leq OL$	$BL \leq 50 - 3\sigma < X < 150 + 3\sigma \leq OL$
Pb	mg/kg	$BL \leq 700 - 3\sigma < X < 1300 + 3\sigma \leq OL$	$BL \leq 700 - 3\sigma < X < 1300 + 3\sigma \leq OL$	$BL \leq 500 - 3\sigma < X < 1500 + 3\sigma \leq OL$
Hg	mg/kg	$BL \leq 700 - 3\sigma < X < 1300 + 3\sigma \leq OL$	$BL \leq 700 - 3\sigma < X < 1300 + 3\sigma \leq OL$	$BL \leq 500 - 3\sigma < X < 1500 + 3\sigma \leq OL$
Cr	mg/kg	$BL \leq 700 - 3\sigma < X$	$BL \leq 700 - 3\sigma < X$	$BL \leq 500 - 3\sigma < X$
Br	mg/kg	$BL \leq 300 - 3\sigma < X$	--	$BL \leq 250 - 3\sigma < X$



Shenzhen LCS Compliance Testing Laboratory Ltd.
 Add: Unit F-G, Floor 23, Kechuang Building, Quanzhi Innovation Science and Technology Park,
 Shajing Town, Bao'an District, Shenzhen, Guangdong, China
 Tel: (86)755-23353209 Internet: Http://www.LCS-cert.com

Report No.: LCS180906027AR

Note:

- BL = Below Limit
- OL = Over Limit
- X = Inconclusive
- ii The XRF screening test for RoHS elements – The reading may be different to the actual content in the sample be of non-uniformity composition.
- iii The maximum permissible limit is quoted from the document 2005/618/EC amending RoHS directive 2011/65/EU:

RoHS Restricted Substances	Maximum Concentration Value (mg/kg) (by weight in homogenous materials)
Cadmium (Cd)	100
Lead (Pb)	1000
Mercury (Hg)	1000
Hexavalent Chromium (Cr(VI))	1000
Polybrominated biphenyls (PBBs)	1000
Polybrominated diphenylethers (PBDEs)	1000
Dibutyl Phthalate(DBP)	1000
Benzylbutyl Phthalate(BBP)	1000
Bis(2-ethylhexyl) Phthalate(DEHP)	1000
Diisobutyl phthalate(DIBP)	1000

Disclaimers:

This XRF Screening report is for reference purposes only. The applicant shall make its/his/her own judgment as to whether the information provided in this XRF screening report is sufficient for its/his/her purposes.

The result shown in this XRF screening report will differ based on various factors, including but not limited to, the sample size, thickness, area, surface flatness, equipment parameters and matrix effect (e.g. plastic, rubber, metal, glass, ceramic etc.). Further wet chemical pre-treatment with relevant chemical equipment analysis are required to obtain quantitative data.



Shenzhen LCS Compliance Testing Laboratory Ltd.

Add: Unit F-G, Floor 23, Kechuang Building, Quanzhi Innovation Science and Technology Park, Shajing Town, Bao'an District, Shenzhen, Guangdong, China

Tel: (86)755-23353209

Internet: [Http://www.LCS-cert.com](http://www.LCS-cert.com)

Report No.: LCS180906027AR

Note:

- Negative = Absence of Cr(VI) on the tested areas
- MDL = Method Detection Limit
- N/A = Not apply
- /= Undetected
- mg/kg = ppm
- ** = Spot-test:
Negative = Absence of Cr(VI) coating/ surface layer, Positive = Presence of Cr(VI) coating/ surface layer;
(The tested sample should be further verified by boiling-water-extraction method if the spot test result cannot be confirmed)
Boiling-water-extraction:
Negative = Absence of Cr(VI) coating/ surface layer, Positive = Presence of Cr(VI) coating/ surface layer;
(The detected concentration in boiling- water-extraction solution is equal or greater than 0.02 mg/kg with 50cm² sample surface areas.)
- # =
Positive indicates the presence of Cr(VI) on the tested areas and result be regarded as conflict with RoHS requirement.
Negative indicates the absence of Cr(VI) on the tested areas and result be regarded as no conflict with RoHS requirement.
- #1 According to RoHS directive 2011/65/EU and its amendments, Lead is exempted in glass of cathode ray tubes, electronic components and fluorescent tubes.
- #2 According to RoHS directive 2011/65/EU and its amendments, Lead is exempted in electronic ceramic parts (e.g. piezoelectronic devices).
- #3 According to RoHS directive 2011/65/EU and its amendments, Lead is exempted as an alloying element in Copper containing up to 4% (40000ppm) by weight.
- #4 According to RoHS directive 2011/65/EU and its amendments, Lead is exempted in high melting temperature type solders (i.e. lead-based alloys containing 85 % by weight or more lead).
- #5 According to the statement provided by the customer, according to RoHS directive 2011/65/EU and its amendments, Lead is exempted as an alloying element in Aluminum containing up to 0.4% (4000ppm) by weight.
- #6 According to the statement provided by the customer, according to RoHS directive 2011/65/EU and its amendments, Cadmium and its compounds in electrical contact is exempted.
- Flow chart appendix is included.
- Photo appendix is included.
- This report cites data from LCS180817038AR.



Shenzhen LCS Compliance Testing Laboratory Ltd.
 Add: Unit F-G, Floor 23, Kechuang Building, Quanzhi Innovation Science and Technology Park,
 Shajing Town, Bao'an District, Shenzhen, Guangdong, China
 Tel: (86)755-23353209 Internet: Http://www.LCS-cert.com

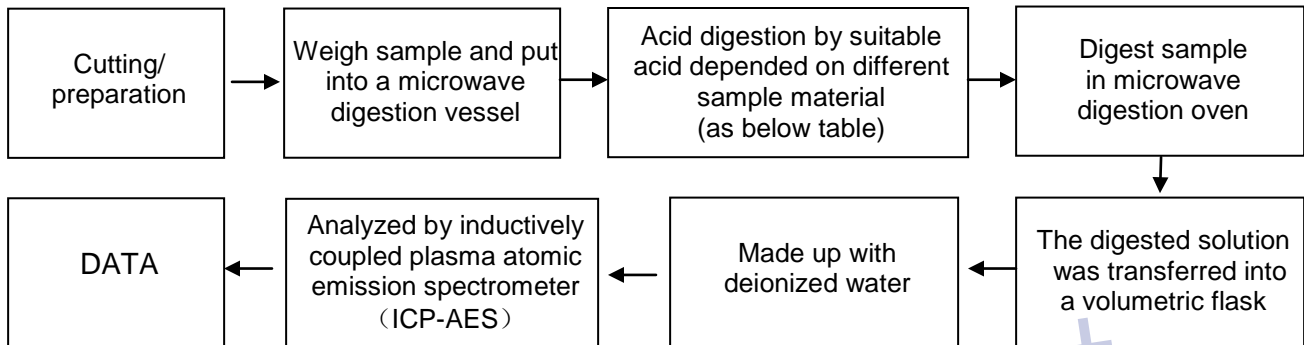
Report No.: LCS180906027AR

Appendix I

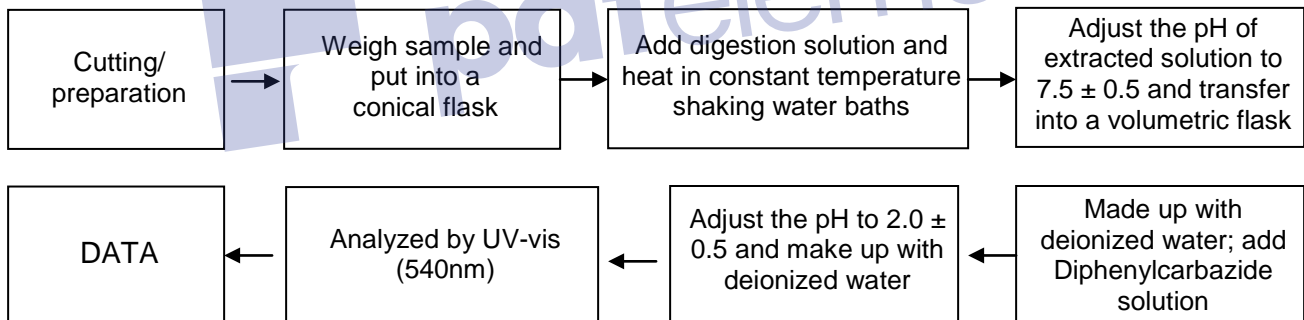
Test Flow chart

1. Test Flow chart for Cd / Pb /Hg content

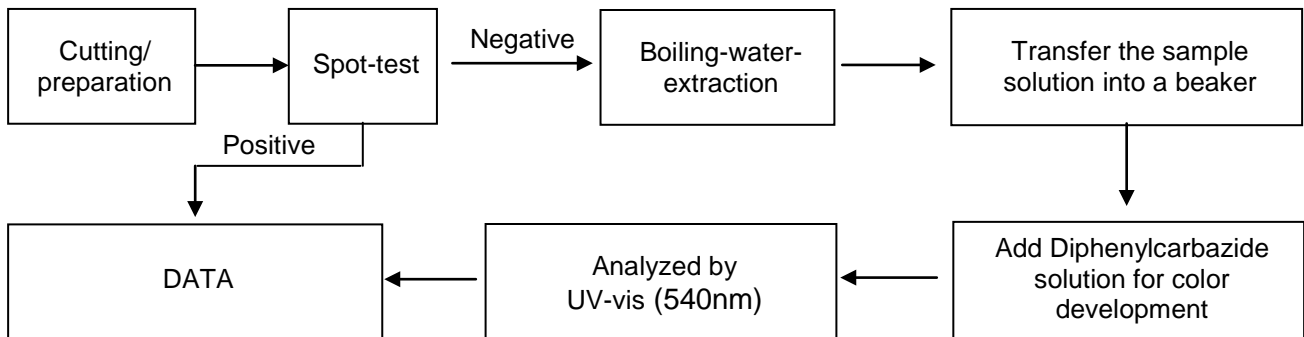
These samples were dissolved totally by pre-conditioning method according to below flow chart.



2. Test Flowchart for Cr⁶⁺ content (For non-metal material)



Test Flowchart for Cr⁶⁺ content (For metal material)

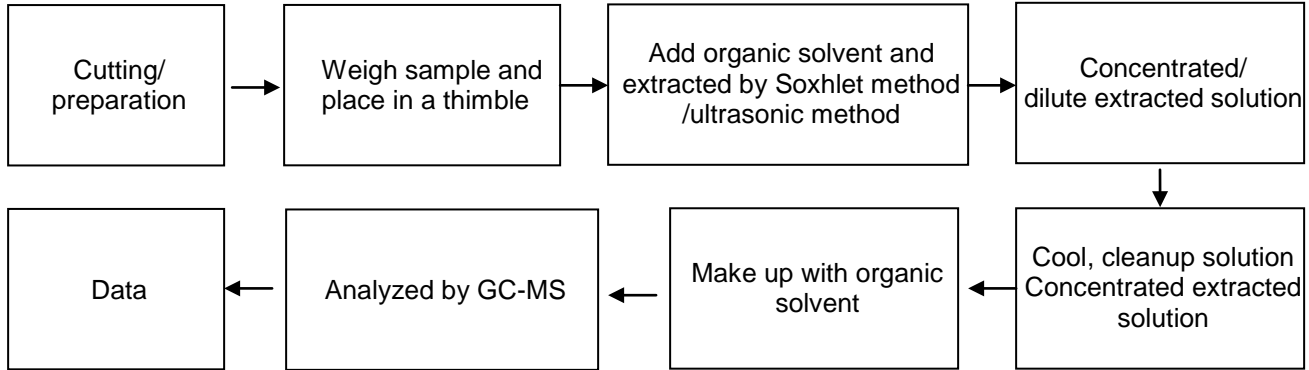




Shenzhen LCS Compliance Testing Laboratory Ltd.
 Add: Unit F-G, Floor 23, Kechuang Building, Quanzhi Innovation Science and Technology Park,
 Shajing Town, Bao'an District, Shenzhen, Guangdong, China
 Tel: (86)755-23353209 Internet: Http://www.LCS-cert.com

Report No.: LCS180906027AR

3. Test Flowchart for PBBs & PBDEs content



Appendix II
 Photograph of Sample





Shenzhen LCS Compliance Testing Laboratory Ltd.

Add: Unit F-G, Floor 23, Kechuang Building, Quanzhi Innovation Science and Technology Park, Shajing Town, Bao'an District, Shenzhen, Guangdong, China

Tel: (86)755-23353209

Internet: [Http://www.LCS-cert.com](http://www.LCS-cert.com)

Report No.: LCS180906027AR





Shenzhen LCS Compliance Testing Laboratory Ltd.

Add: Unit F-G, Floor 23, Kechuang Building, Quanzhi Innovation Science and Technology Park, Shajing Town, Bao'an District, Shenzhen, Guangdong, China

Tel: (86)755-23353209

Internet: [Http://www.LCS-cert.com](http://www.LCS-cert.com)

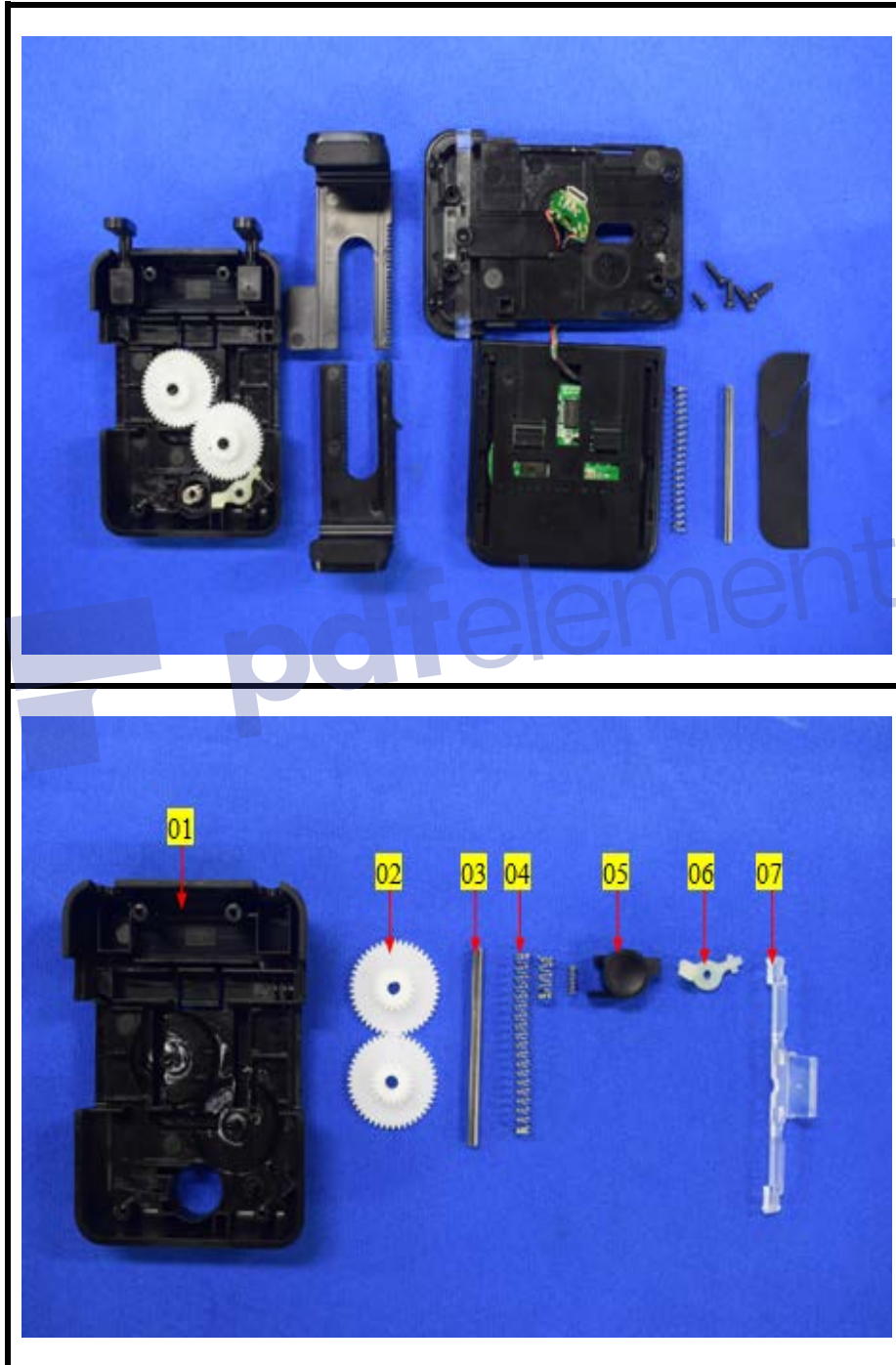
Report No.: LCS180906027AR





Shenzhen LCS Compliance Testing Laboratory Ltd.
Add: Unit F-G, Floor 23, Kechuang Building, Quanzhi Innovation Science and Technology Park,
Shajing Town, Bao'an District, Shenzhen, Guangdong, China
Tel: (86)755-23353209 Internet: [Http://www.LCS-cert.com](http://www.LCS-cert.com)

Report No.: LCS180906027AR





Shenzhen LCS Compliance Testing Laboratory Ltd.

Add: Unit F-G, Floor 23, Kechuang Building, Quanzhi Innovation Science and Technology Park, Shajing Town, Bao'an District, Shenzhen, Guangdong, China

Tel: (86)755-23353209

Internet: [Http://www.LCS-cert.com](http://www.LCS-cert.com)

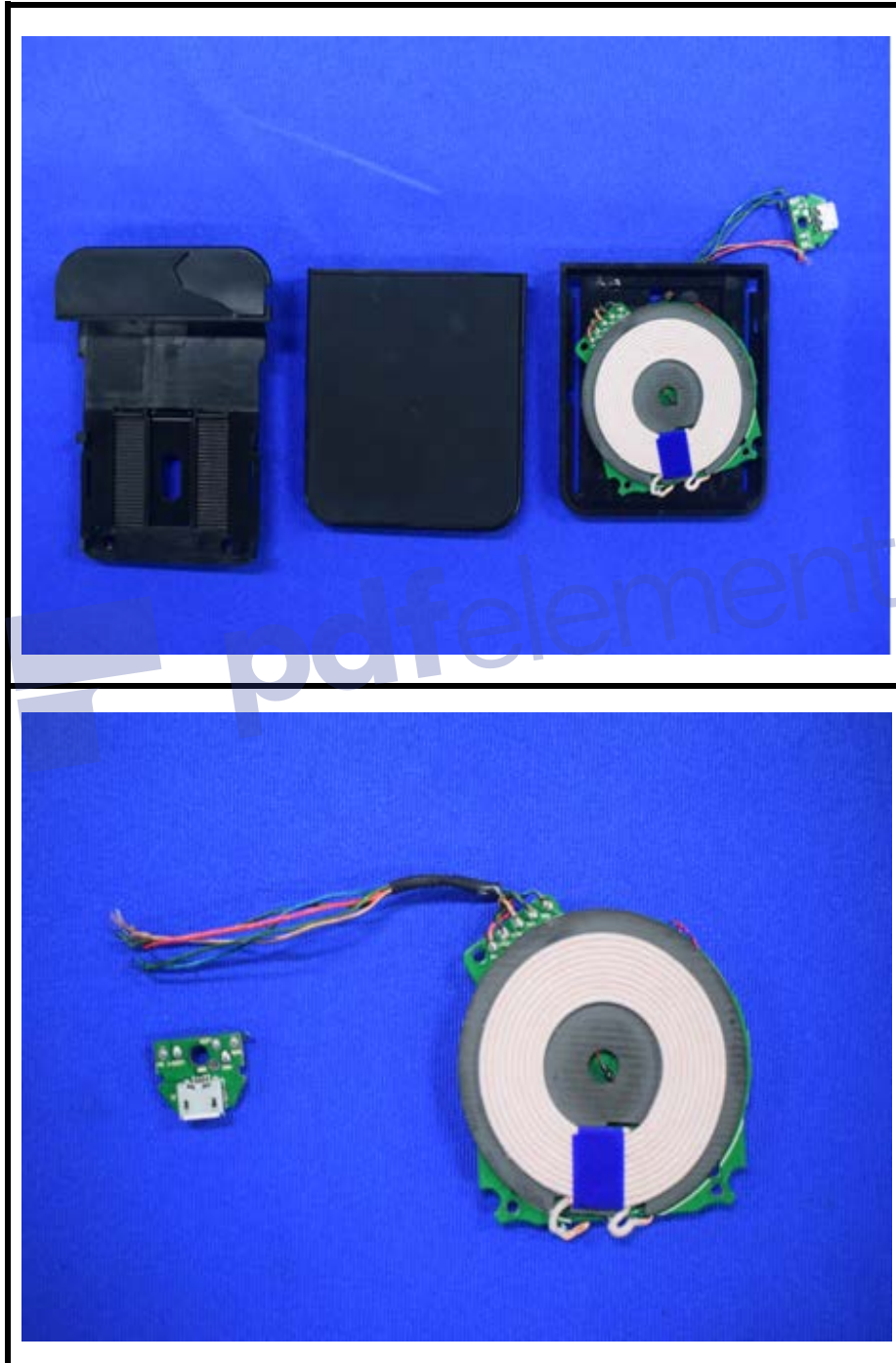
Report No.: LCS180906027AR





Shenzhen LCS Compliance Testing Laboratory Ltd.
Add: Unit F-G, Floor 23, Kechuang Building, Quanzhi Innovation Science and Technology Park,
Shajing Town, Bao'an District, Shenzhen, Guangdong, China
Tel: (86)755-23353209 Internet: [Http://www.LCS-cert.com](http://www.LCS-cert.com)

Report No.: LCS180906027AR





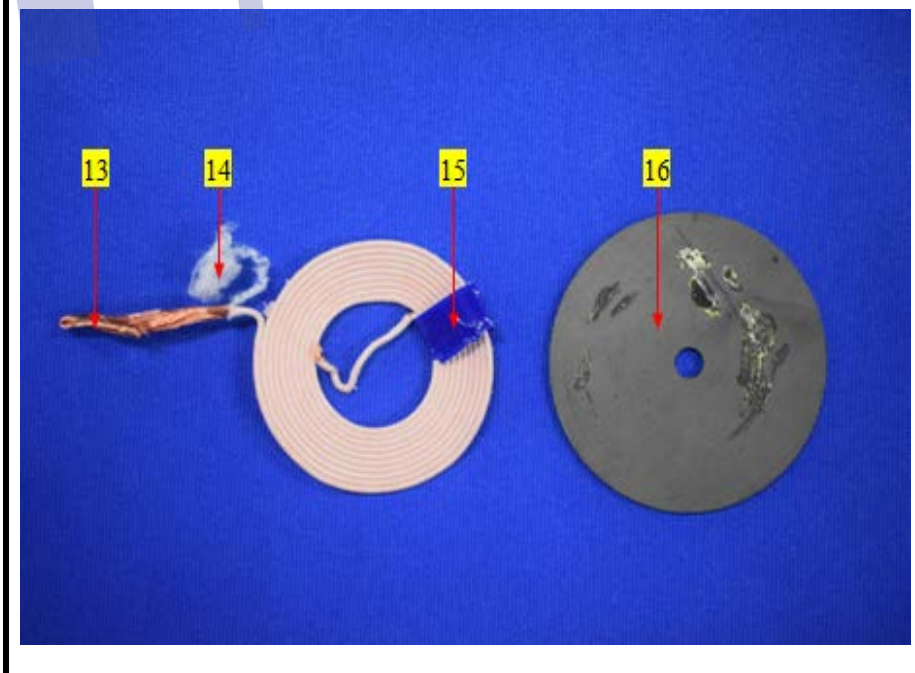
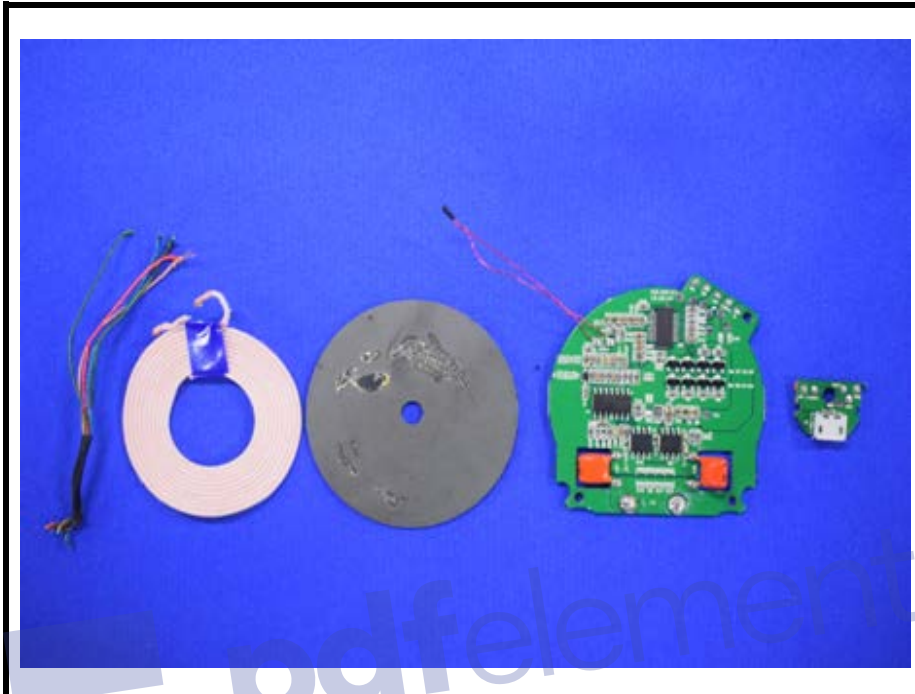
Shenzhen LCS Compliance Testing Laboratory Ltd.

Add: Unit F-G, Floor 23, Kechuang Building, Quanzhi Innovation Science and Technology Park, Shajing Town, Bao'an District, Shenzhen, Guangdong, China

Tel: (86)755-23353209

Internet: [Http://www.LCS-cert.com](http://www.LCS-cert.com)

Report No.: LCS180906027AR





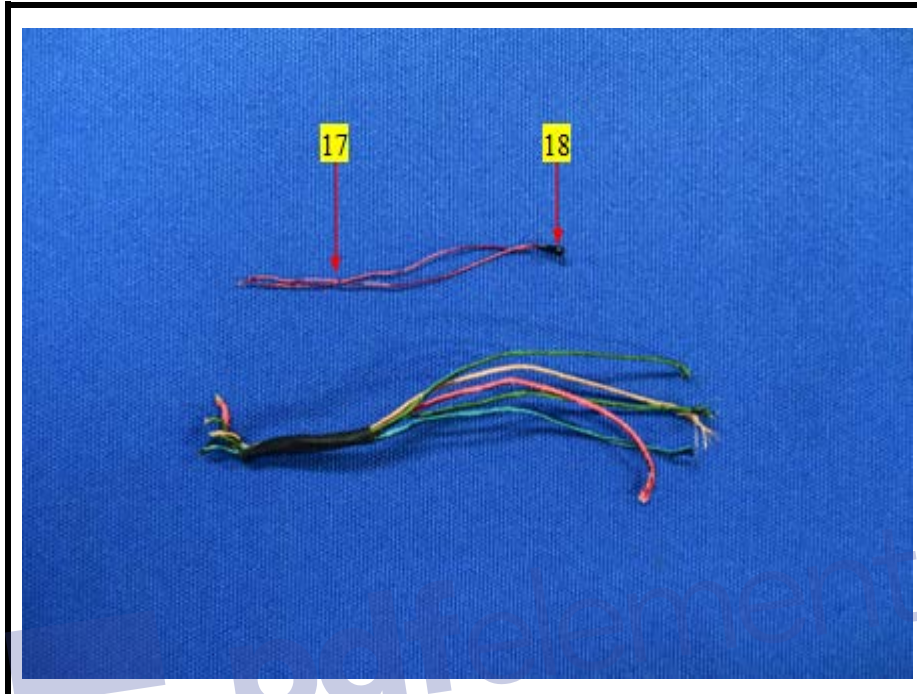
Shenzhen LCS Compliance Testing Laboratory Ltd.

Add: Unit F-G, Floor 23, Kechuang Building, Quanzhi Innovation Science and Technology Park, Shajing Town, Bao'an District, Shenzhen, Guangdong, China

Tel: (86)755-23353209

Internet: [Http://www.LCS-cert.com](http://www.LCS-cert.com)

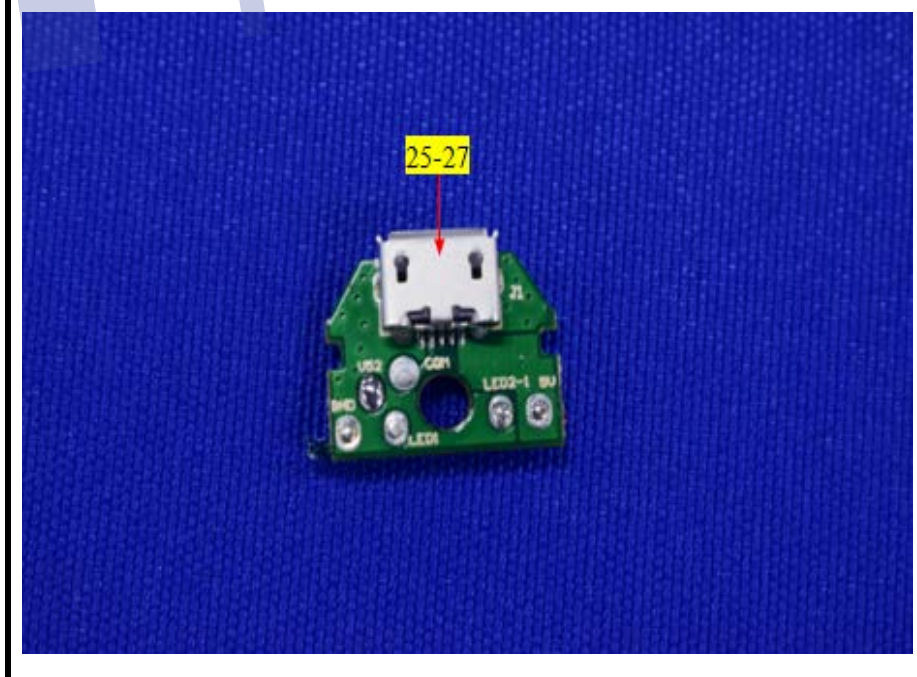
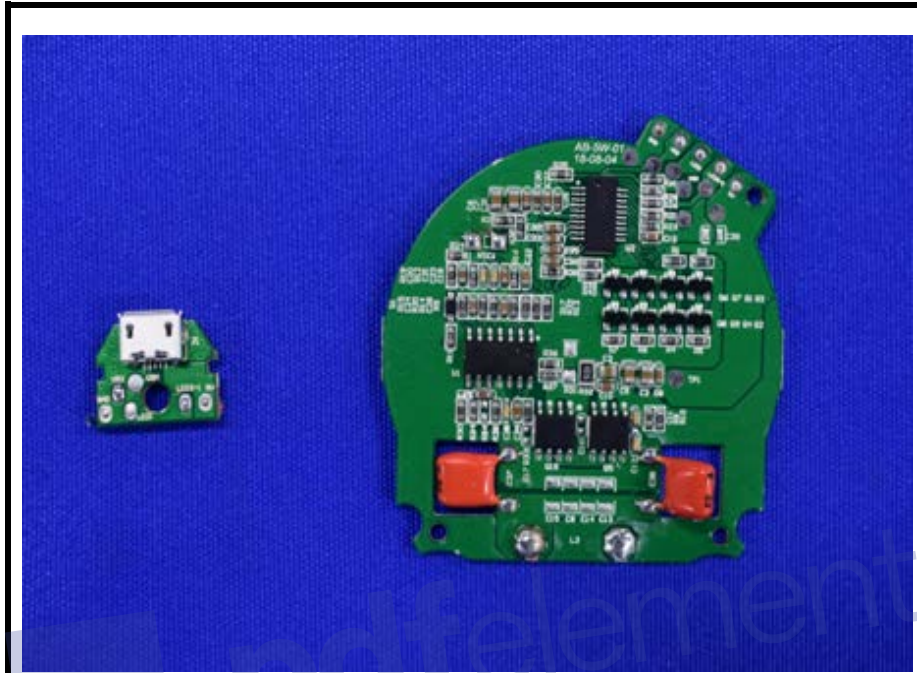
Report No.: LCS180906027AR





Shenzhen LCS Compliance Testing Laboratory Ltd.
Add: Unit F-G, Floor 23, Kechuang Building, Quanzhi Innovation Science and Technology Park,
Shajing Town, Bao'an District, Shenzhen, Guangdong, China
Tel: (86)755-23353209 Internet: [Http://www.LCS-cert.com](http://www.LCS-cert.com)

Report No.: LCS180906027AR





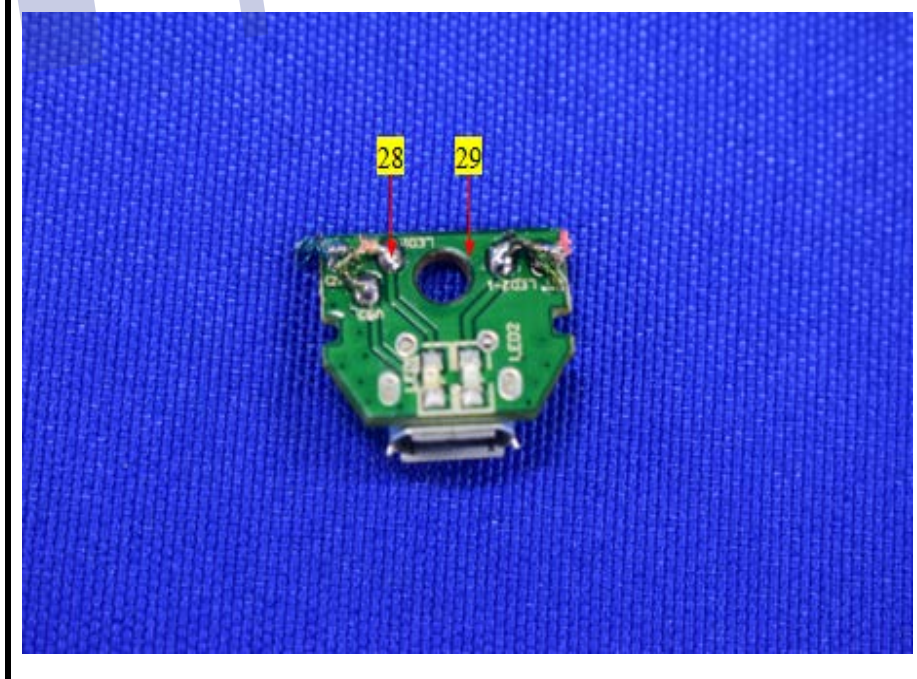
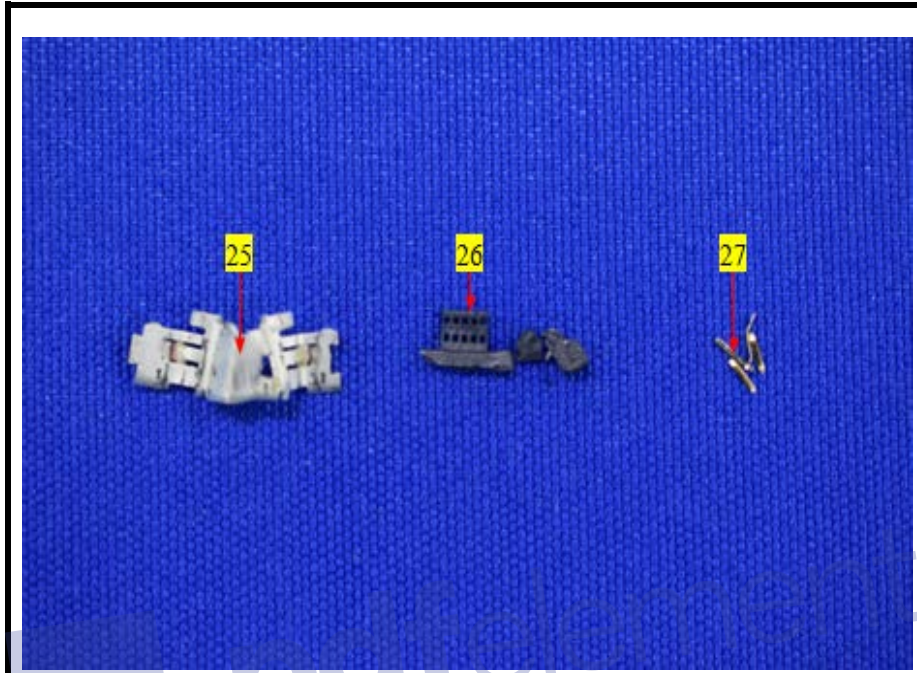
Shenzhen LCS Compliance Testing Laboratory Ltd.

Add: Unit F-G, Floor 23, Kechuang Building, Quanzhi Innovation Science and Technology Park, Shajing Town, Bao'an District, Shenzhen, Guangdong, China

Tel: (86)755-23353209

Internet: [Http://www.LCS-cert.com](http://www.LCS-cert.com)

Report No.: LCS180906027AR





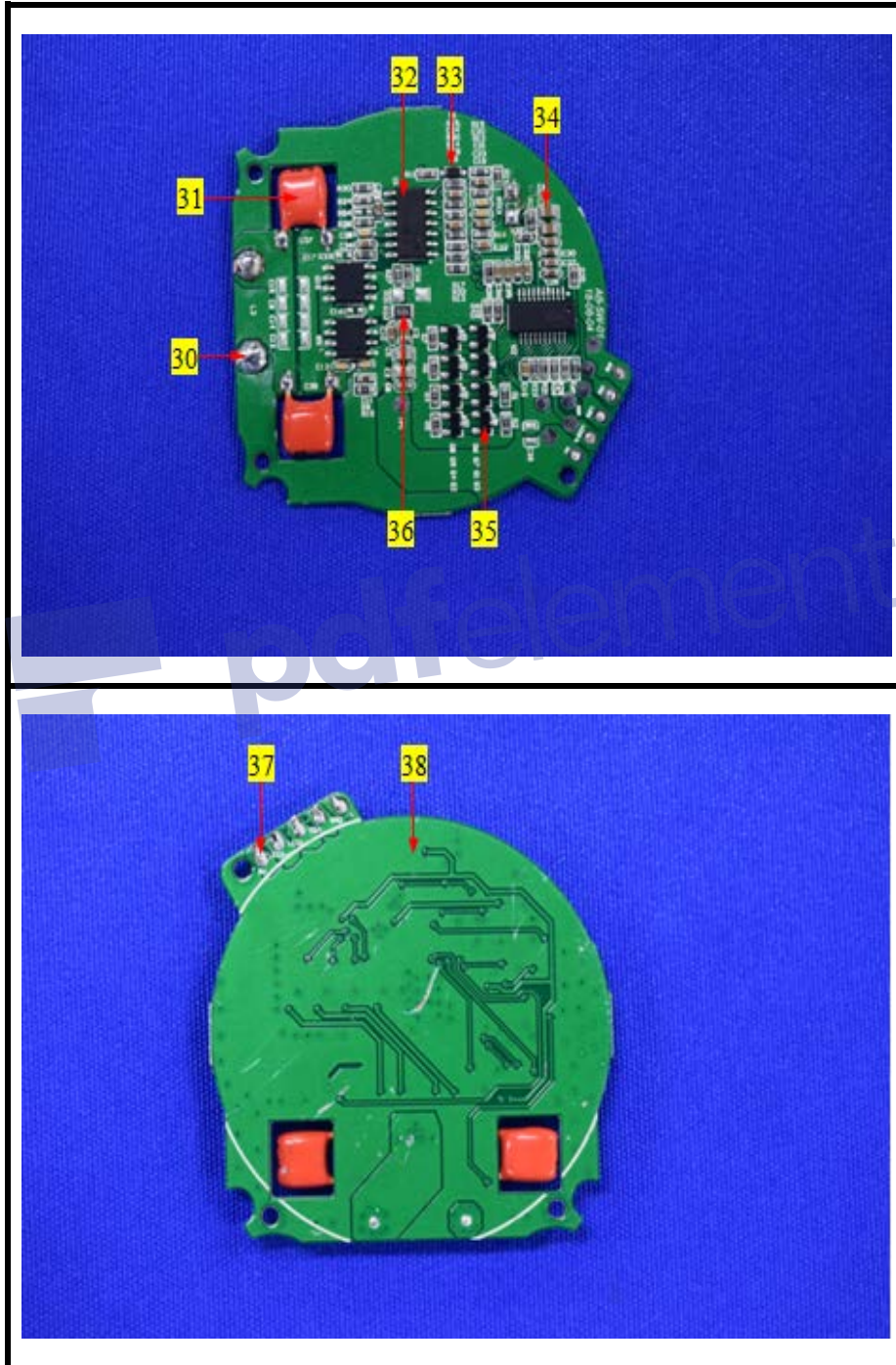
Shenzhen LCS Compliance Testing Laboratory Ltd.

Add: Unit F-G, Floor 23, Kechuang Building, Quanzhi Innovation Science and Technology Park, Shajing Town, Bao'an District, Shenzhen, Guangdong, China

Tel: (86)755-23353209

Internet: [Http://www.LCS-cert.com](http://www.LCS-cert.com)

Report No.: LCS180906027AR





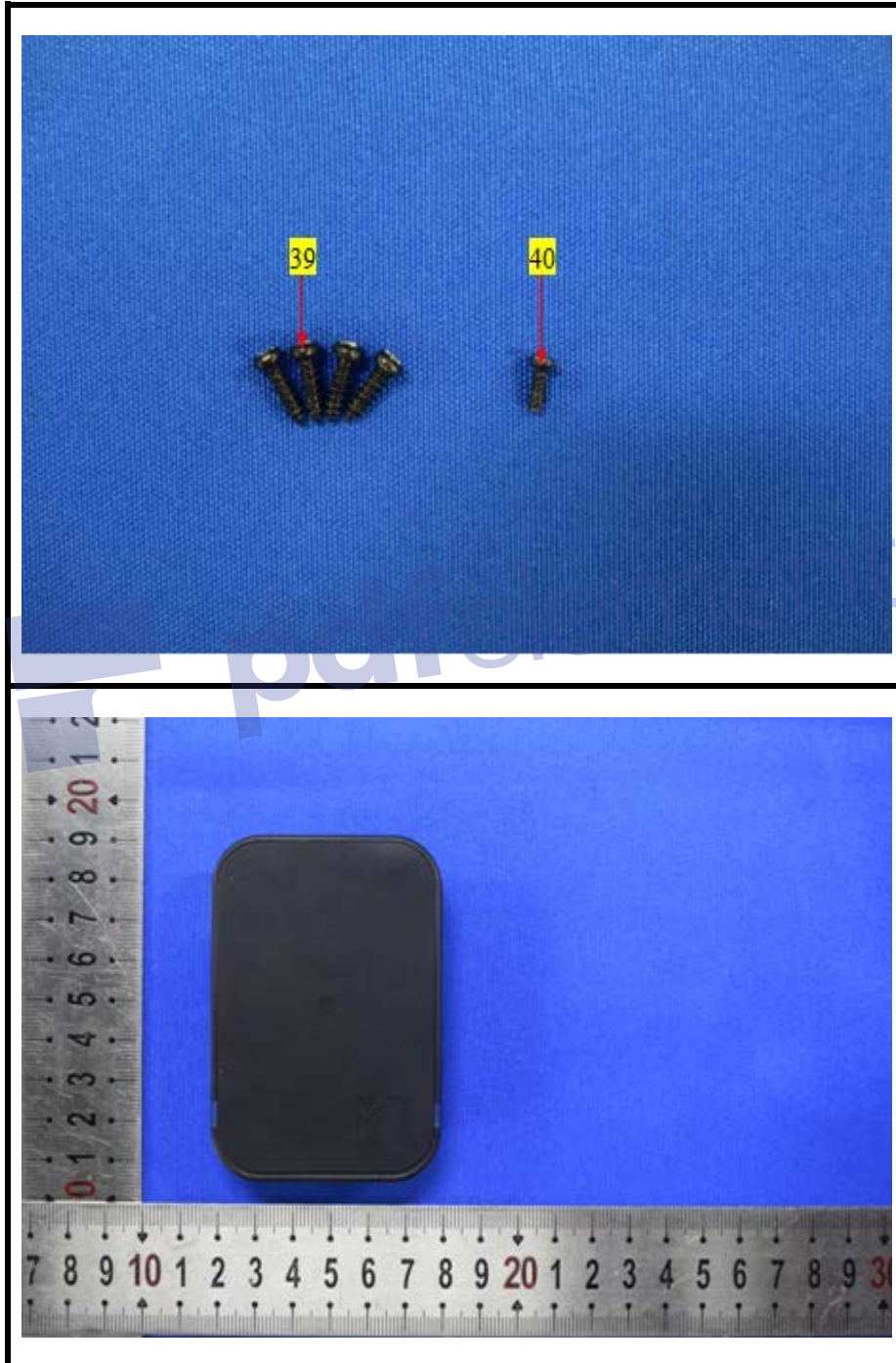
Shenzhen LCS Compliance Testing Laboratory Ltd.

Add: Unit F-G, Floor 23, Kechuang Building, Quanzhi Innovation Science and Technology Park, Shajing Town, Bao'an District, Shenzhen, Guangdong, China

Tel: (86)755-23353209

Internet: [Http://www.LCS-cert.com](http://www.LCS-cert.com)

Report No.: LCS180906027AR





Shenzhen LCS Compliance Testing Laboratory Ltd.

Add: Unit F-G, Floor 23, Kechuang Building, Quanzhi Innovation Science and Technology Park, Shajing Town, Bao'an District, Shenzhen, Guangdong, China

Tel: (86)755-23353209

Internet: [Http://www.LCS-cert.com](http://www.LCS-cert.com)

Report No.: LCS180906027AR





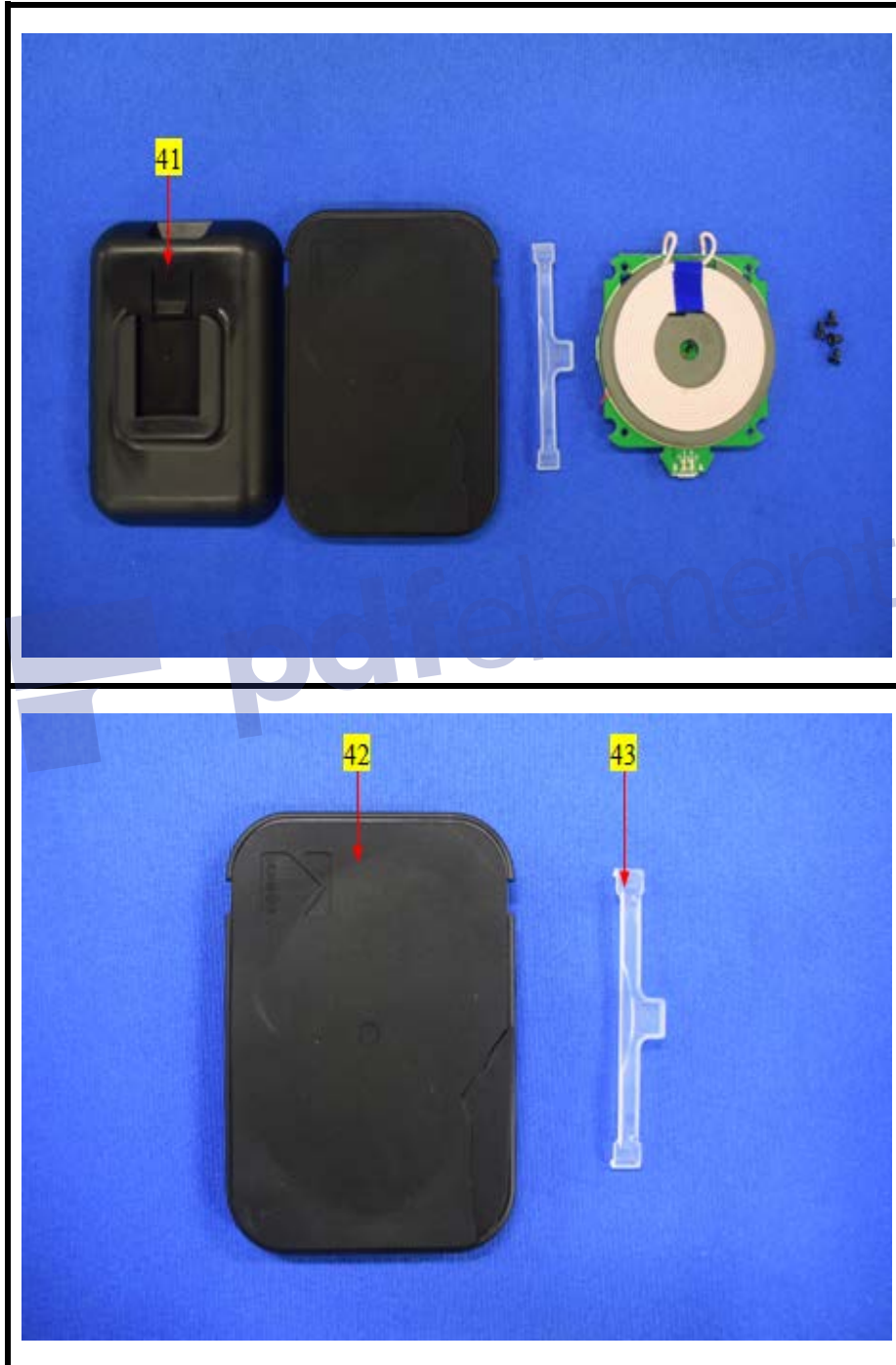
Shenzhen LCS Compliance Testing Laboratory Ltd.

Add: Unit F-G, Floor 23, Kechuang Building, Quanzhi Innovation Science and Technology Park, Shajing Town, Bao'an District, Shenzhen, Guangdong, China

Tel: (86)755-23353209

Internet: [Http://www.LCS-cert.com](http://www.LCS-cert.com)

Report No.: LCS180906027AR





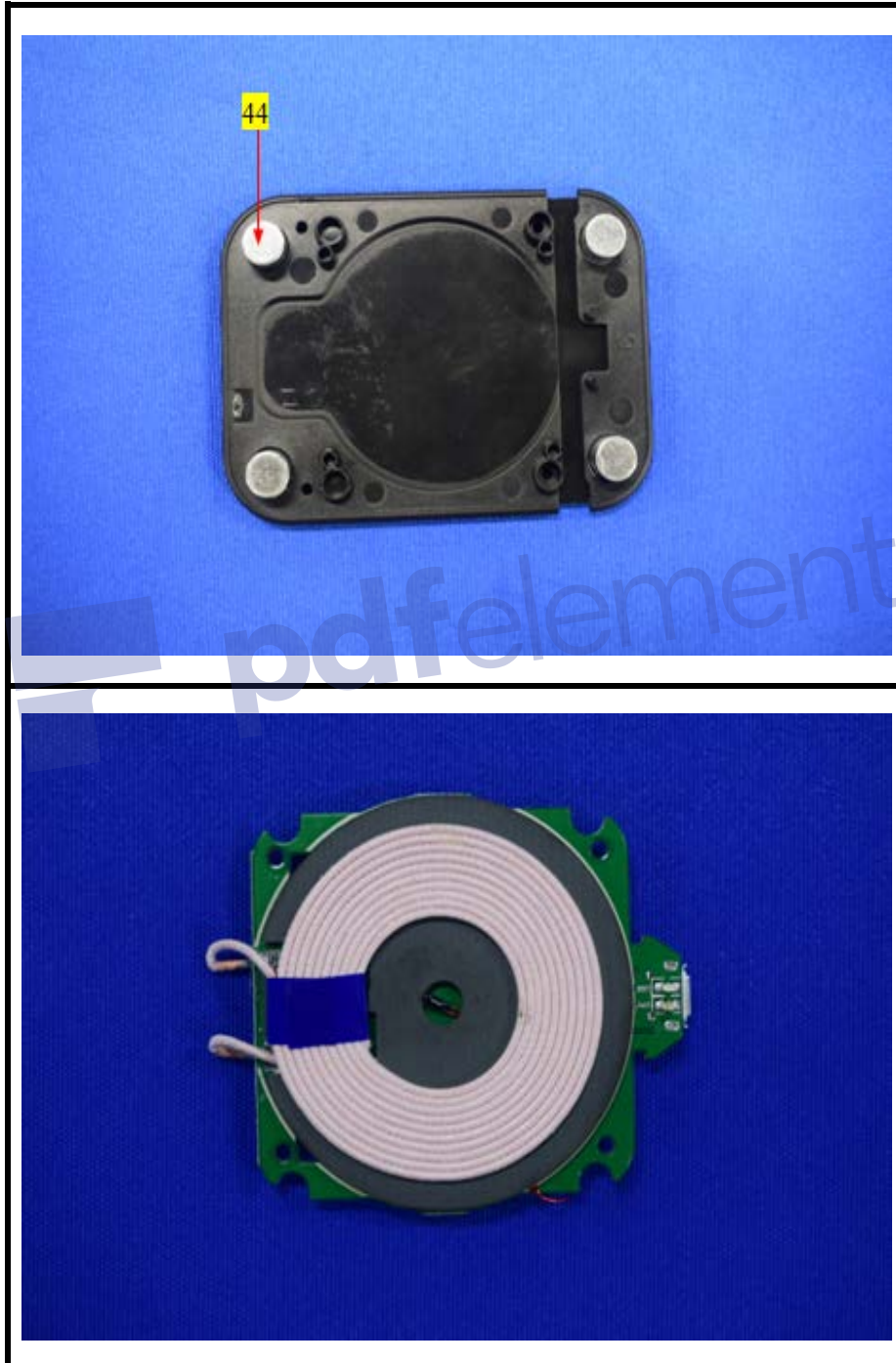
Shenzhen LCS Compliance Testing Laboratory Ltd.

Add: Unit F-G, Floor 23, Kechuang Building, Quanzhi Innovation Science and Technology Park, Shajing Town, Bao'an District, Shenzhen, Guangdong, China

Tel: (86)755-23353209

Internet: [Http://www.LCS-cert.com](http://www.LCS-cert.com)

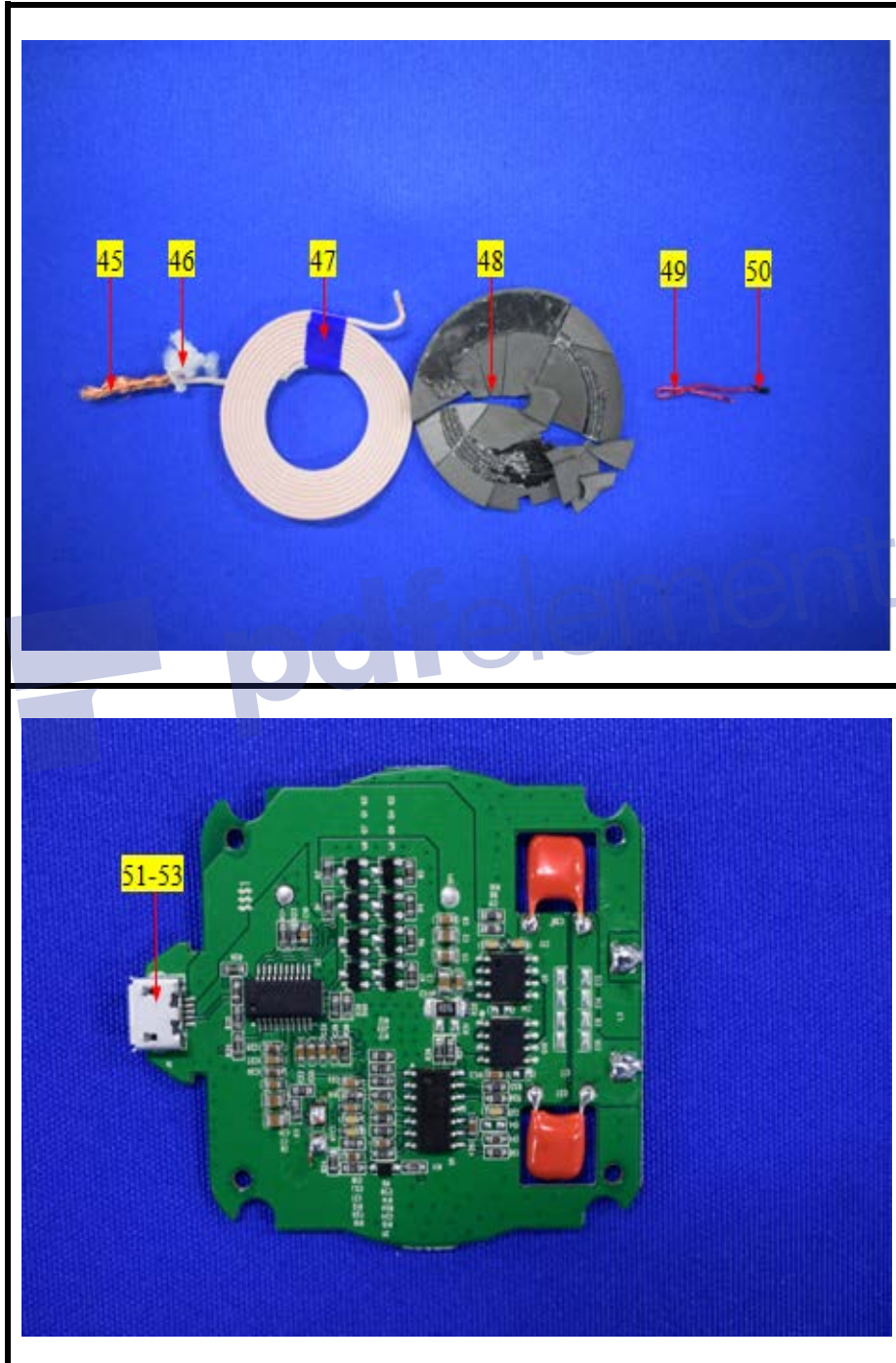
Report No.: LCS180906027AR





Shenzhen LCS Compliance Testing Laboratory Ltd.
Add: Unit F-G, Floor 23, Kechuang Building, Quanzhi Innovation Science and Technology Park,
Shajing Town, Bao'an District, Shenzhen, Guangdong, China
Tel: (86)755-23353209 Internet: [Http://www.LCS-cert.com](http://www.LCS-cert.com)

Report No.: LCS180906027AR





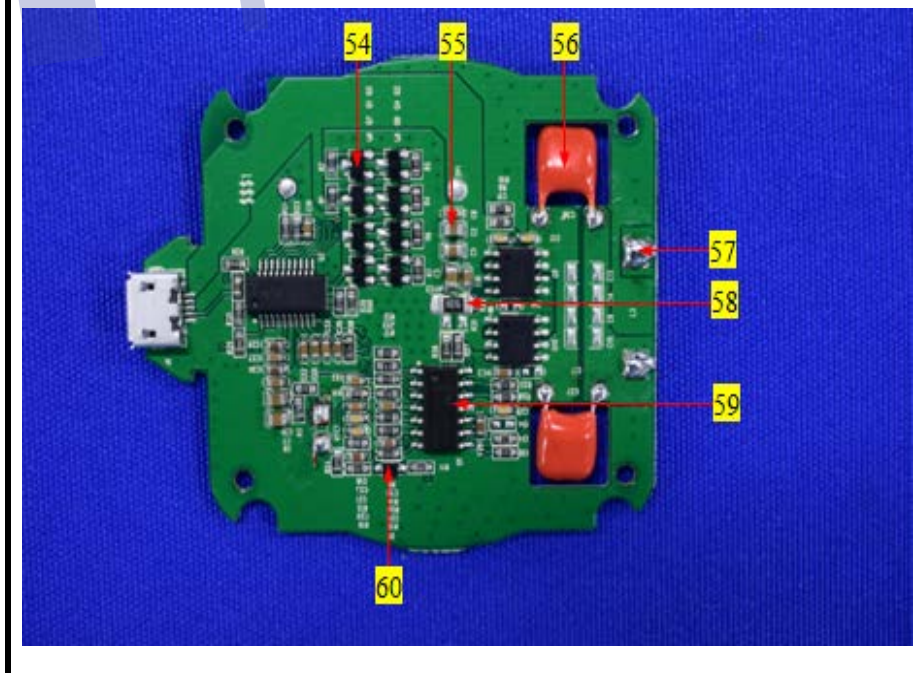
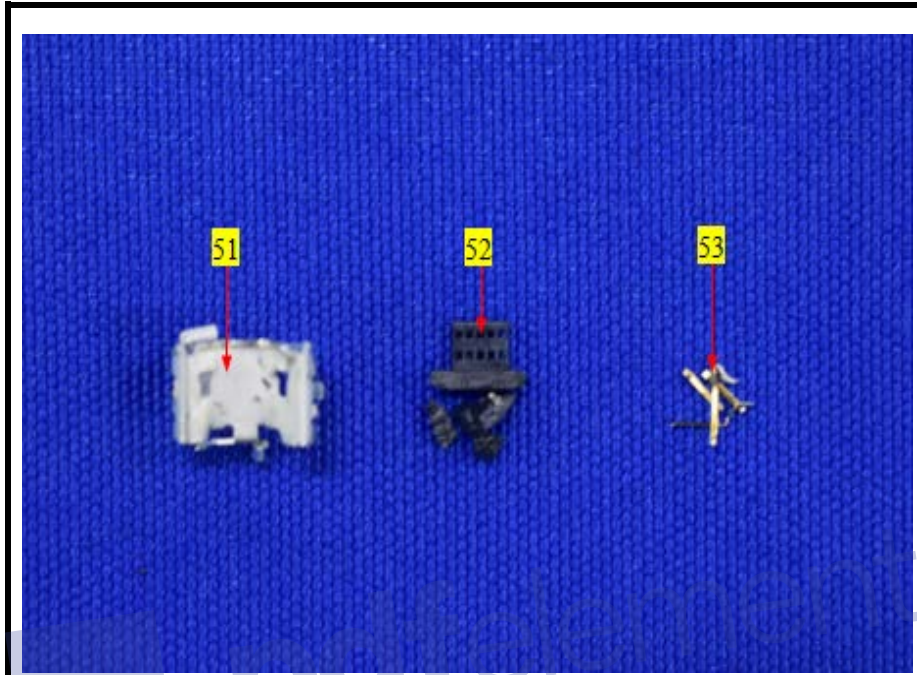
Shenzhen LCS Compliance Testing Laboratory Ltd.

Add: Unit F-G, Floor 23, Kechuang Building, Quanzhi Innovation Science and Technology Park, Shajing Town, Bao'an District, Shenzhen, Guangdong, China

Tel: (86)755-23353209

Internet: [Http://www.LCS-cert.com](http://www.LCS-cert.com)

Report No.: LCS180906027AR





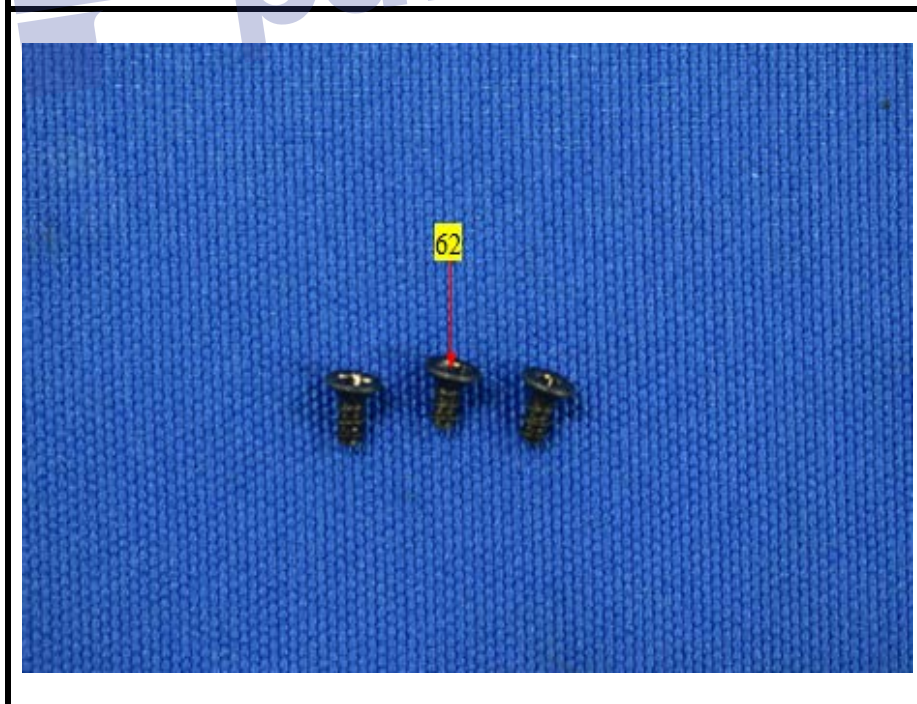
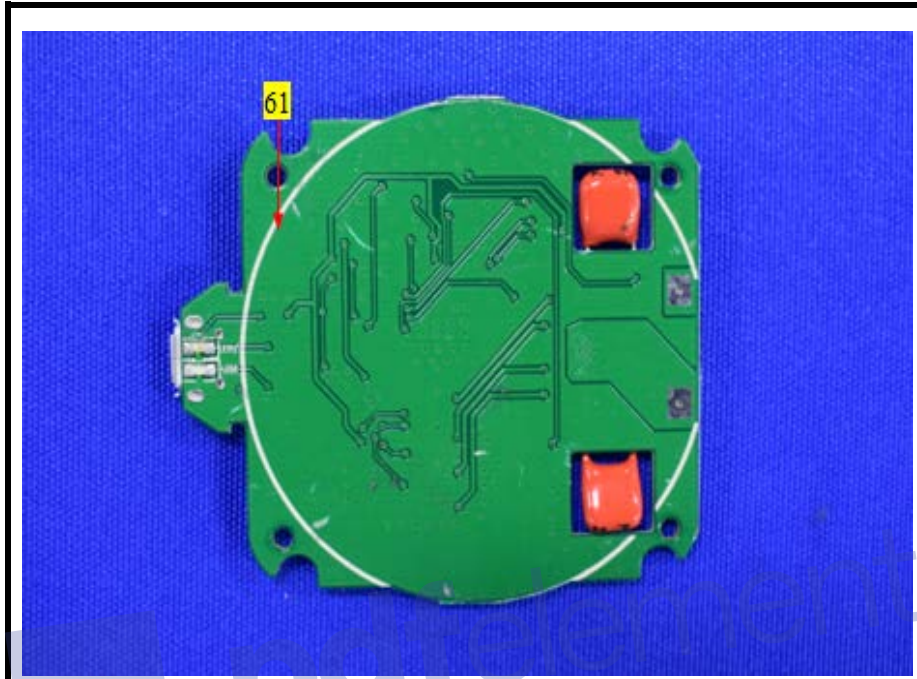
Shenzhen LCS Compliance Testing Laboratory Ltd.

Add: Unit F-G, Floor 23, Kechuang Building, Quanzhi Innovation Science and Technology Park, Shajing Town, Bao'an District, Shenzhen, Guangdong, China

Tel: (86)755-23353209

Internet: [Http://www.LCS-cert.com](http://www.LCS-cert.com)

Report No.: LCS180906027AR





Shenzhen LCS Compliance Testing Laboratory Ltd.

Add: Unit F-G, Floor 23, Kechuang Building, Quanzhi Innovation Science and Technology Park, Shajing Town, Bao'an District, Shenzhen, Guangdong, China

Tel: (86)755-23353209

Internet: [Http://www.LCS-cert.com](http://www.LCS-cert.com)

Report No.: LCS180906027AR





Shenzhen LCS Compliance Testing Laboratory Ltd.

Add: Unit F-G, Floor 23, Kechuang Building, Quanzhi Innovation Science and Technology Park, Shajing Town, Bao'an District, Shenzhen, Guangdong, China

Tel: (86)755-23353209

Internet: [Http://www.LCS-cert.com](http://www.LCS-cert.com)

Report No.: LCS180906027AR





Shenzhen LCS Compliance Testing Laboratory Ltd.

Add: Unit F-G, Floor 23, Kechuang Building, Quanzhi Innovation Science and Technology Park, Shajing Town, Bao'an District, Shenzhen, Guangdong, China

Tel: (86)755-23353209

Internet: [Http://www.LCS-cert.com](http://www.LCS-cert.com)

Report No.: LCS180906027AR





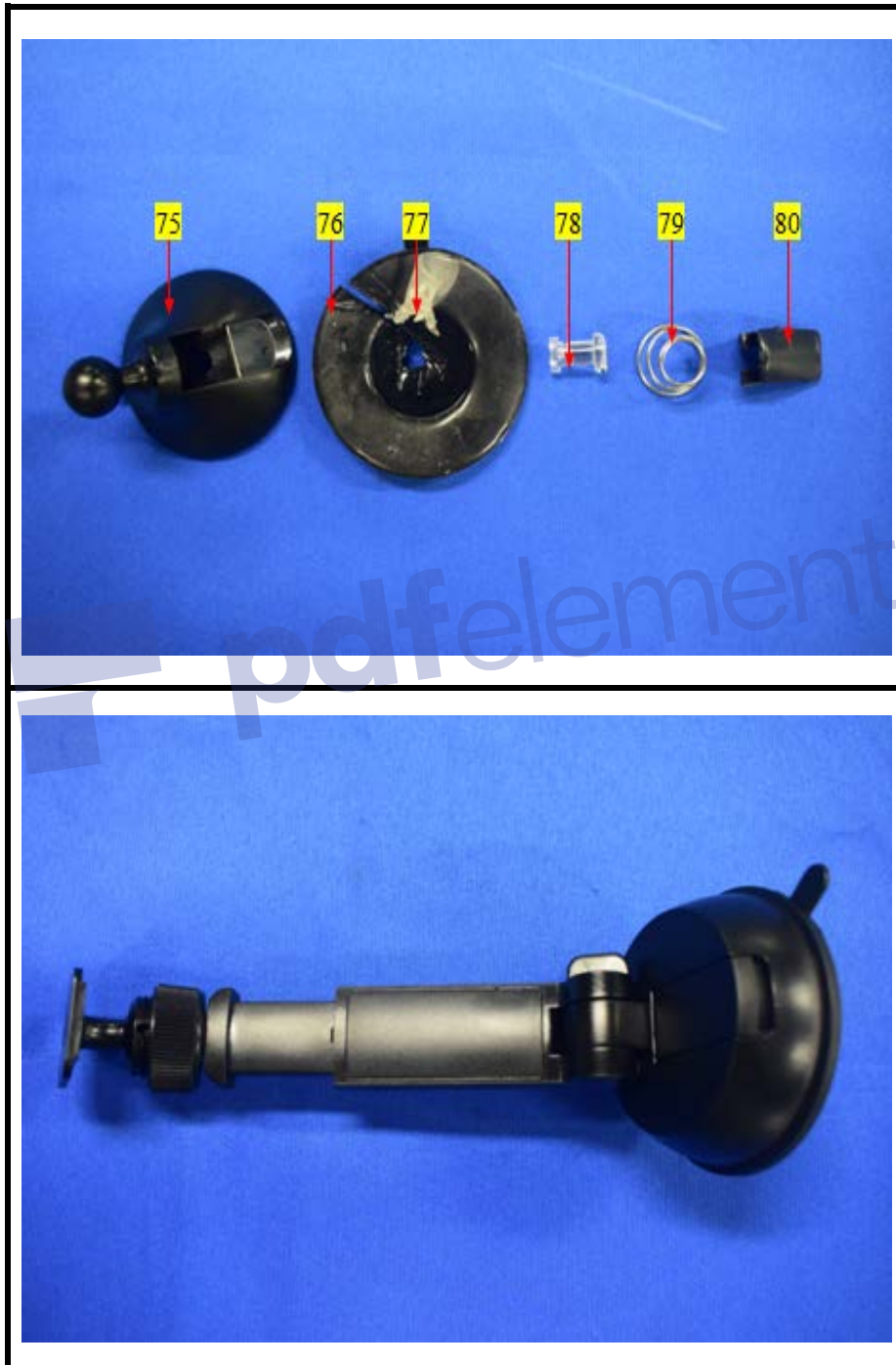
Shenzhen LCS Compliance Testing Laboratory Ltd.

Add: Unit F-G, Floor 23, Kechuang Building, Quanzhi Innovation Science and Technology Park, Shajing Town, Bao'an District, Shenzhen, Guangdong, China

Tel: (86)755-23353209

Internet: [Http://www.LCS-cert.com](http://www.LCS-cert.com)

Report No.: LCS180906027AR





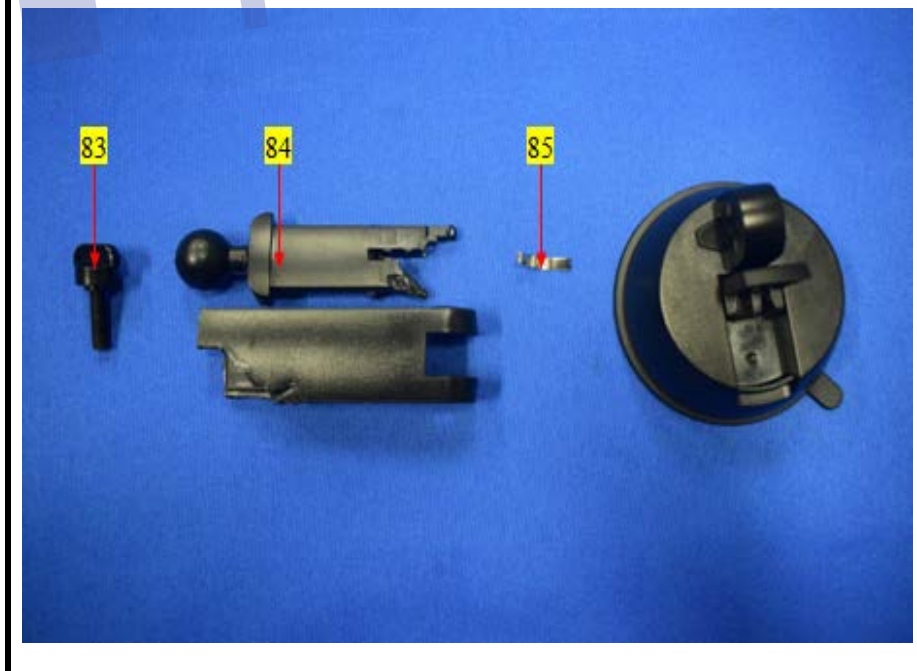
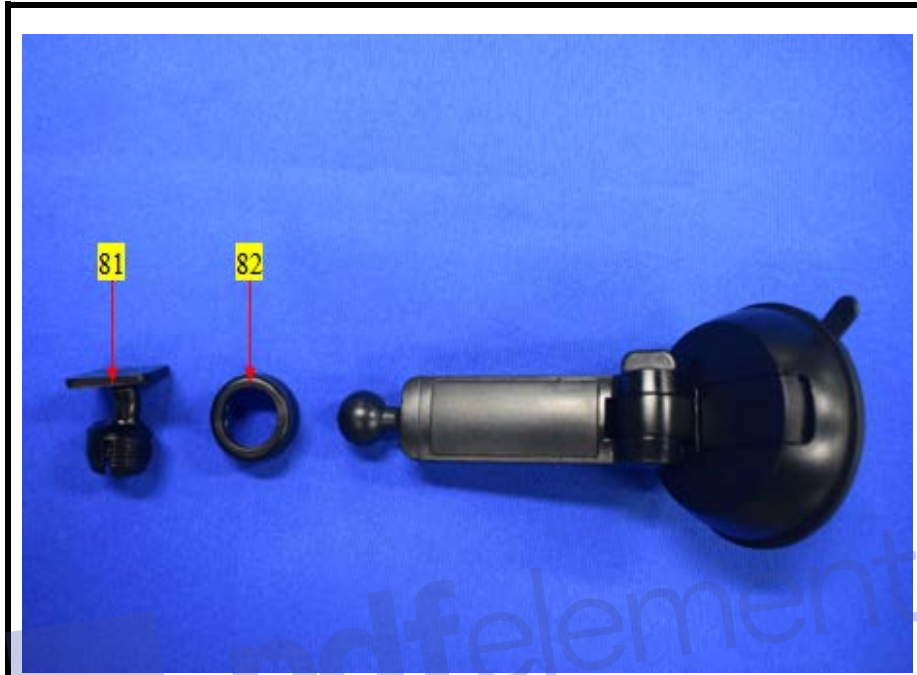
Shenzhen LCS Compliance Testing Laboratory Ltd.

Add: Unit F-G, Floor 23, Kechuang Building, Quanzhi Innovation Science and Technology Park, Shajing Town, Bao'an District, Shenzhen, Guangdong, China

Tel: (86)755-23353209

Internet: [Http://www.LCS-cert.com](http://www.LCS-cert.com)

Report No.: LCS180906027AR





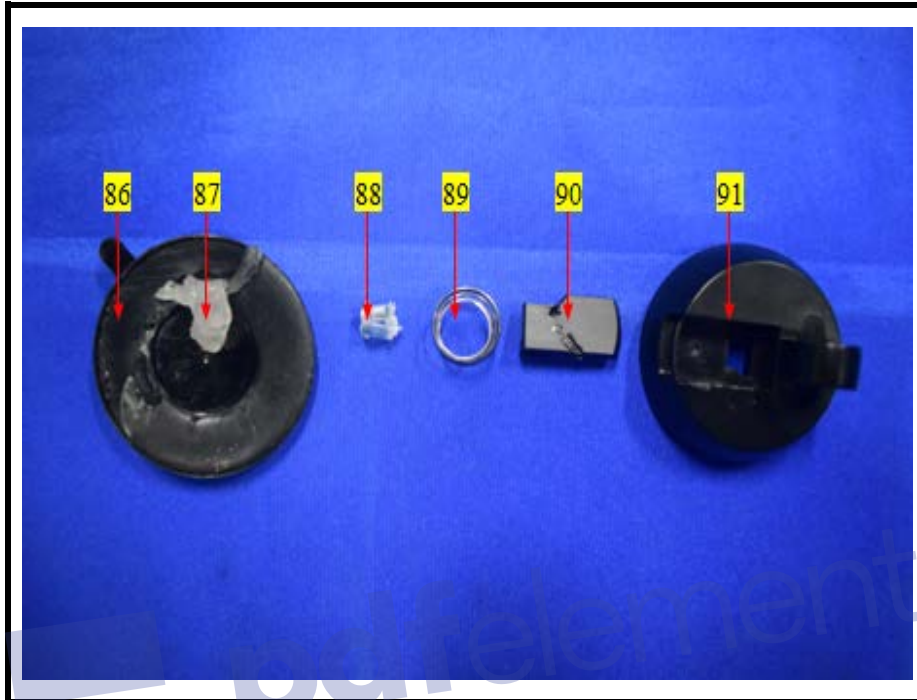
Shenzhen LCS Compliance Testing Laboratory Ltd.

Add: Unit F-G, Floor 23, Kechuang Building, Quanzhi Innovation Science and Technology Park, Shajing Town, Bao'an District, Shenzhen, Guangdong, China

Tel: (86)755-23353209

Internet: [Http://www.LCS-cert.com](http://www.LCS-cert.com)

Report No.: LCS180906027AR



LCS authenticate the photo on original report only

***** End of Report *****

The test report is effective only with both signature and specialized stamp. The result(s) shown in this report refer only to the sample(s) tested. Without written approval of LCS, this report can't be reproduced except in full.

Declaration of Conformity

Manufacture: RITS ELECTRONICS(SHEN ZHEN) CO., LTD.

Address: Bld F, ChengJian Industrial Zone, No. 1 Lingxia Road,
Fenghuang Community, Fuyong District

Postal Code: 518103

Country: China

Product Name: Wireless Charge

Model Number: DL-004

Brand: ZINGARO

WPC QI-DI: 4456

We herewith declare that the above mentioned product equal
to the Model Number: UC103, Brand: KODAK.

21th. Sep. 2018



CERTIFICATE OF REGISTRATION QI-ID 4456



The product **Wireless charger with smartphone holder** by **ZINGARO** with type number **DL-004** is licensed to use the Qi logo on the product, on the product's packaging, and in the product's user manual.

The product passed the tests defined in the Qi wireless power specification and works correctly when used in combination with other products that are licensed to use the Qi logo.


Sep 17, 2018

Menno Treffers

Chairman



<http://www.wirelesspowerconsortium.com/products/details/4456/info>

The symbol  and the word "Qi" are registered trademarks in many jurisdictions. Use of these trademarks requires a license. Members of the Wireless Power Consortium can license the Qi symbol for use on their products. The trademark license is granted only for products that are registered in the Product Registration Database.

This certificate of registration can be withdrawn by the Wireless Power Consortium. For actual status consult the website.