

DATA SHEET / FICHA TÉCNICA / FICHE TECHNIQUE

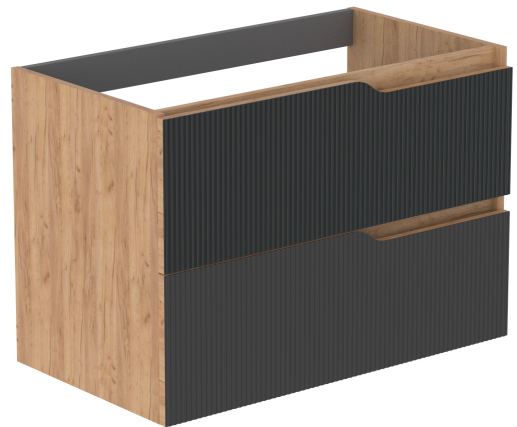
FEATURES / CARACTERÍSTICAS / CARACTÉRISTIQUES

· Description / Descripción / Description:

2 Drawers wall-hung vanity.
 Sizes: 60x45x55cm / 80x45x55cm / 100x45x55cm.
 Carcass material: 16mm thick laminated plywood.
 Drawer fronts material: 16mm laminated plywood / glass.
 Pull-out drawers with HETTICH® railing system.
 Soft close, partial opening drawers (Quadro® concealed runners).
 Finishes: White, Craft Oak and Black, Black.

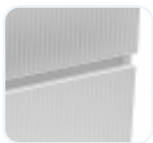
Mueble suspendido 2 cajones.
 Medidas: 60x45x55cm / 80x45x55cm / 100x45x55cm.
 Material de la carcasa: Tablero melamina de 16mm.
 Material de los frentes de los cajones: Tablero melamina de 16mm / cristal.
 Cajones extraíbles con sistema de guías HETTICH®.
 Cajones de cierre amortiguado y apertura parcial (guías ocultas Quadro®).
 Acabados: Blanco, Roble Craft y Negro, Negro.

Meuble suspendu 2 tiroirs.
 Dimensions: 60x45x55cm / 80x45x55cm / 100x45x55cm.
 Matière de la carcasse: 16mm épais panneau de mélamine.
 Matière des façades des tiroirs: 16mm épais panneau de mélamine / verre.
 Tiroirs coulissants avec système de rails HETTICH®.
 Tiroirs à fermeture amortie et ouverture partielle (glissières cachées Quadro®).
 Finitions: Blanc, Chêne Craft et noir, Noir.



· Finishes / Acabados / Finitions:

White
Blanco
Blanc



Craft Oak/ Black
Roble Craft / Negro
Chêne Craft / Noir



Black
Negro
Noir



· Sizes / Dimensiones / Dimensions:

