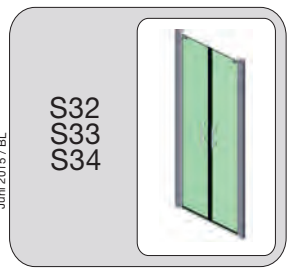




Camargue®
VARIO

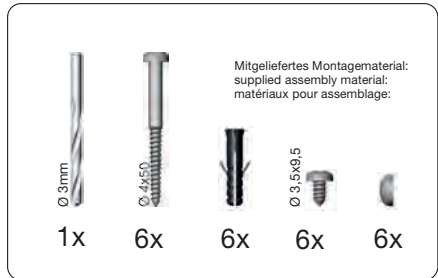
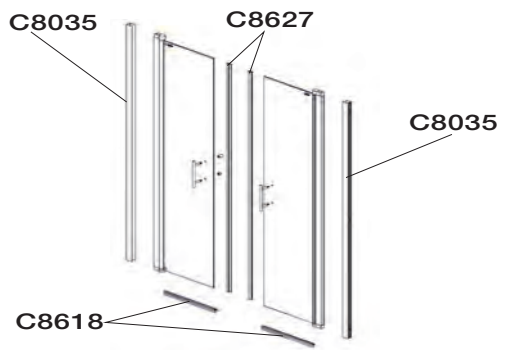


<p>DT-EBM Tür</p>	
<p>Duschlassen-Einbaumaß Shower tray installation dimension Dimensions de montage bases de douche (mm)</p>	
Modell	
S32	775-815
S33	875-915
S34	975-1015

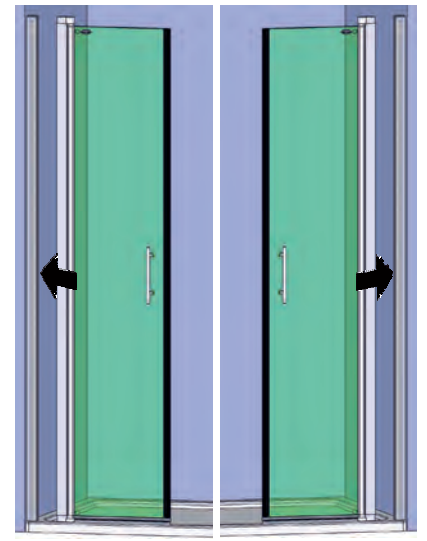
Achtung! Gläser niemals ungeschützt auf den Boden stellen.
Verletzung der Glaskante führt zu Glasbruch.

Caution! Never put glass walls on the floor without protection.
Damaging the glass edges results in breaking of the glass.

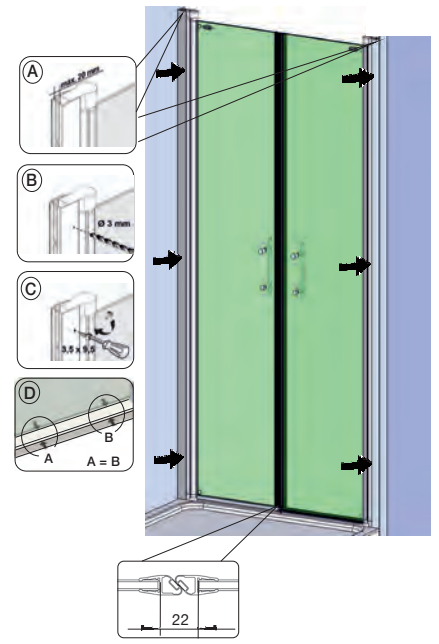
Attention! Jamais placer des parois de douche en verre au sol sans protection. Des verres endommagés casseront.



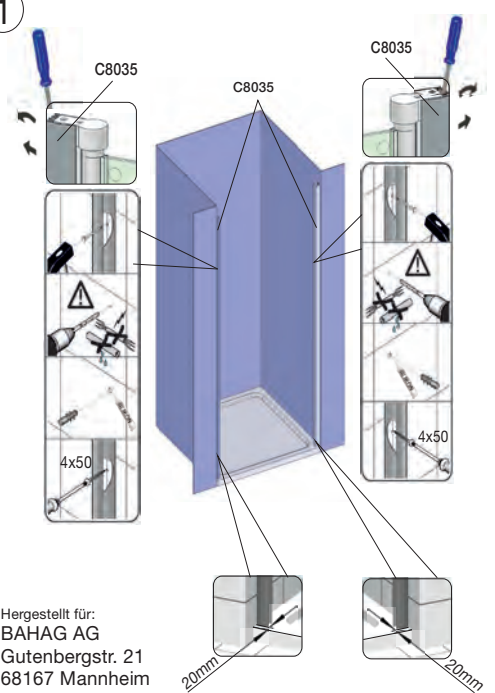
3



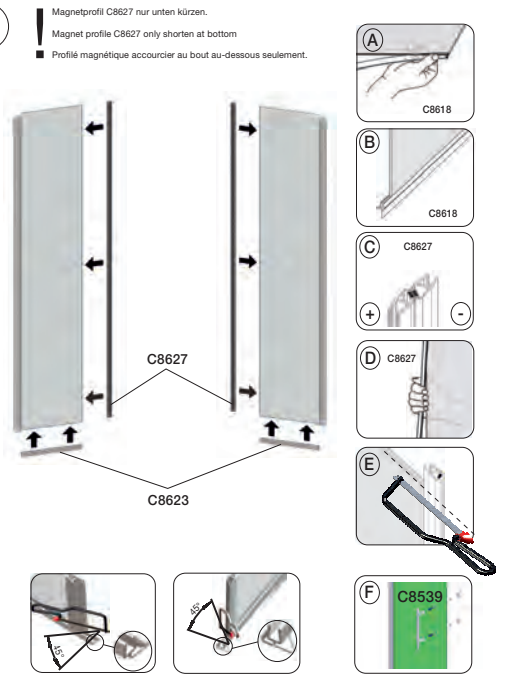
4



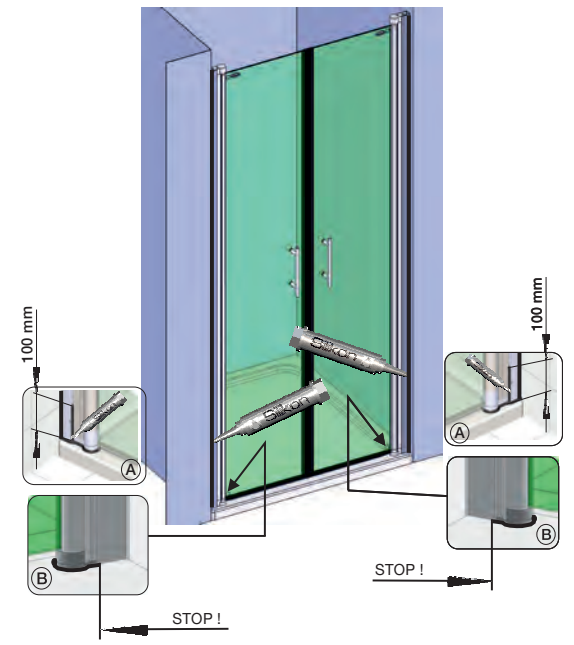
1



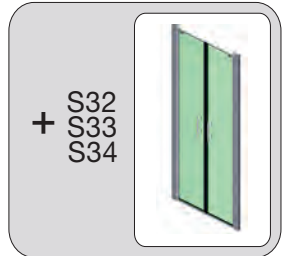
2



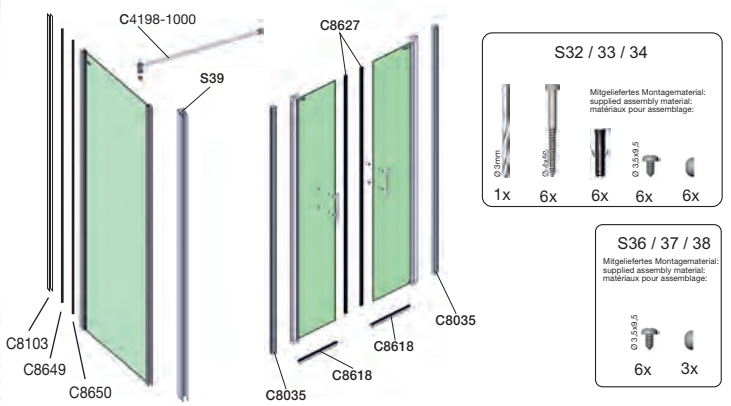
5



Hergestellt für:
BAHAG AG
Gutenbergstr. 21
68167 Mannheim



Modell	Duschassen-Einbaumaß Shower tray installation dimension Dimensions de montage base de douche (mm)		Bodenabmesse-Einbaumaß panne floor installation dimension Dimensions de montage sol (mm)	
	BE-EBM ST	DT-EBM ST	BE-EBM Tür	DT-EBM Tür
S32 (Tür)	785-815	745-775		
S33 (Tür)	885-915	845-875		
S34 (Tür)	985-1015	945-975		
S36 (ST)	785-805	745-765		
S37 (ST)	885-905	845-865		
S38 (ST)	985-1005	945-965		

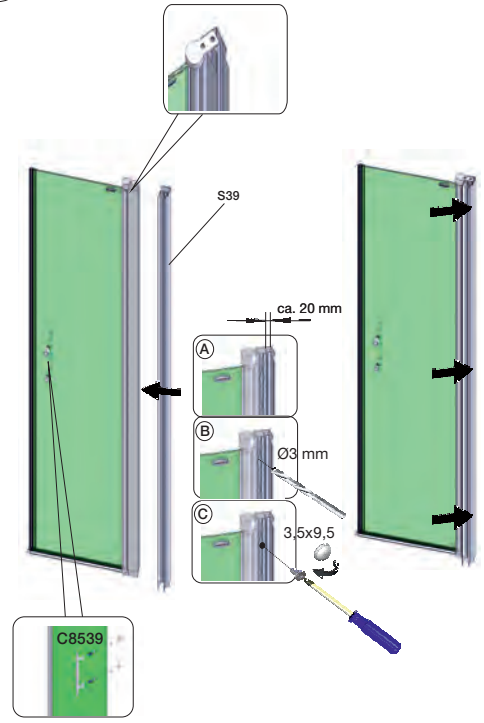


Achtung! Gläser niemals ungeschützt auf den Boden stellen.
Verletzung der Glaskante führt zu Glasbruch.

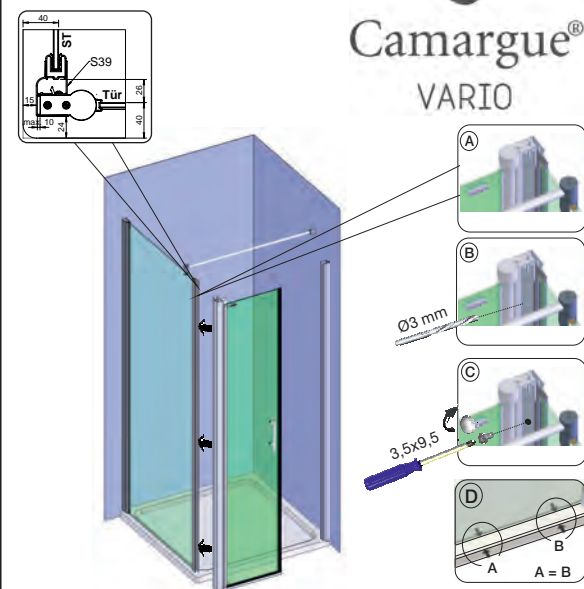
Caution! Never put glass walls on the floor without protection.
Damaging the glass edges results in breaking of the glass.

Attention! Jamais placer des parois de douche en verre au sol sans protection. Des verres endommagés casseront.

3

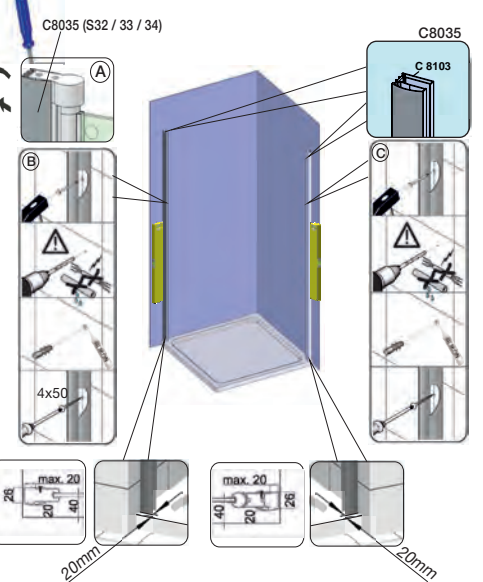


4

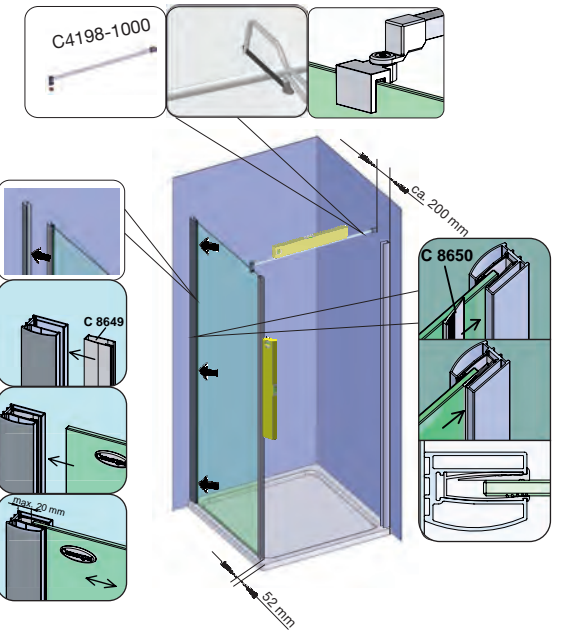


1

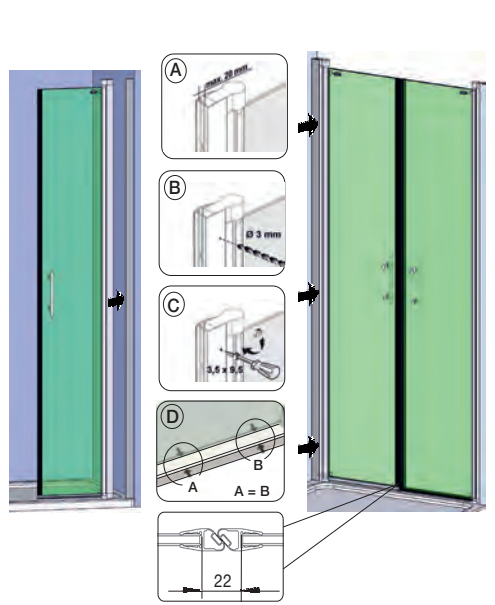
Montageanleitung für Rechtsanschlag
(Linksanschlag = spiegelbildlich)
Assembly instructions for right hand mounting
(left hand mounting = mirror inverted)
Instruction d'assemblage pour charnière à droite
(à gauche = inversé latéralement)



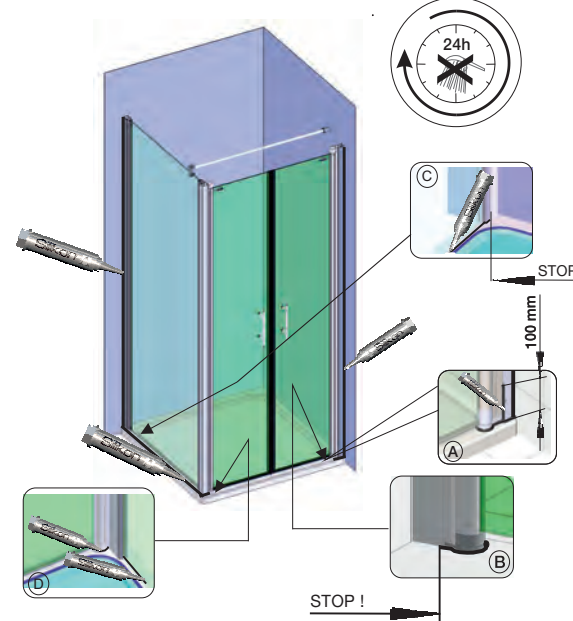
2



5



6



Achtung! Gläser niemals ungeschützt auf den Boden stellen.
Verletzung der Glaskante führt zu Glasbruch.

Caution! Never put glass walls on the floor without protection.
Damaging the glass edges results in breaking of the glass.

Attention! Jamais placer des parois de douche en verre au sol sans protection. Des verres endommagés casseront.

2x S36
2x S37
2x S38

+ 2x S39

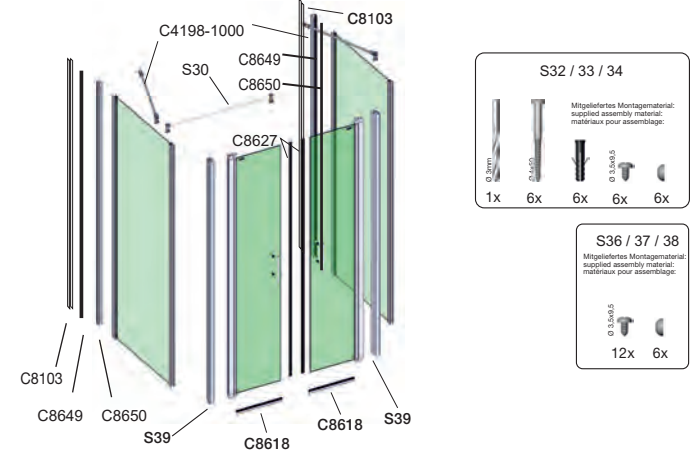
1x S32
+ 1x S33
1x S34

Modell	DT-EBM	BE-EBM
S32 (Tür)	800	715-735
S33 (Tür)	900	815-835
S34 (Tür)	1000	915-935
S36 (ST)	785-805	745-765
S37 (ST)	885-905	845-865
S38 (ST)	985-1005	945-965

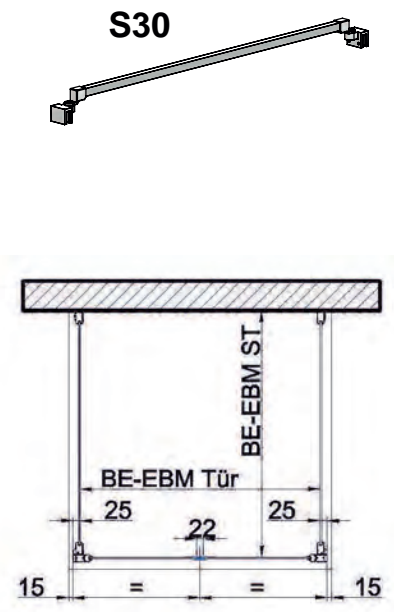
DT-EBM ST
BE-EBM ST
BE-EBM Tür
DT-EBM Tür

Duschkästen-Einbaumaß
Shower tray installation dimension
Dimensions de montage bacs de douche
(mm)

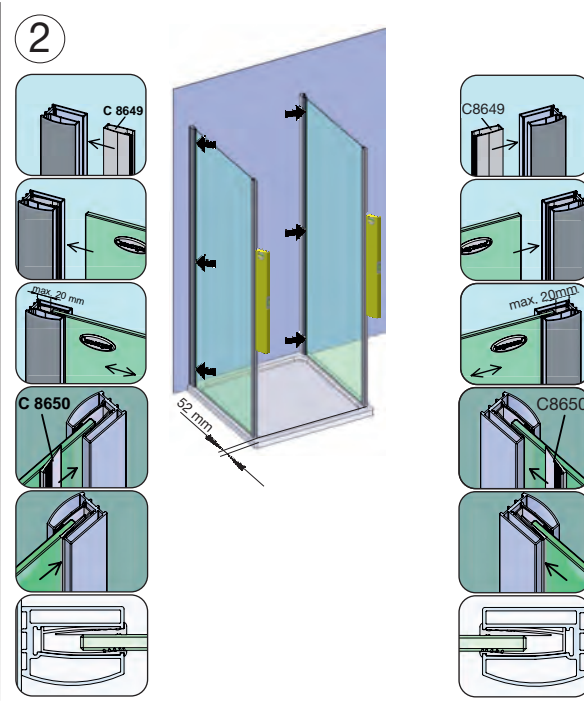
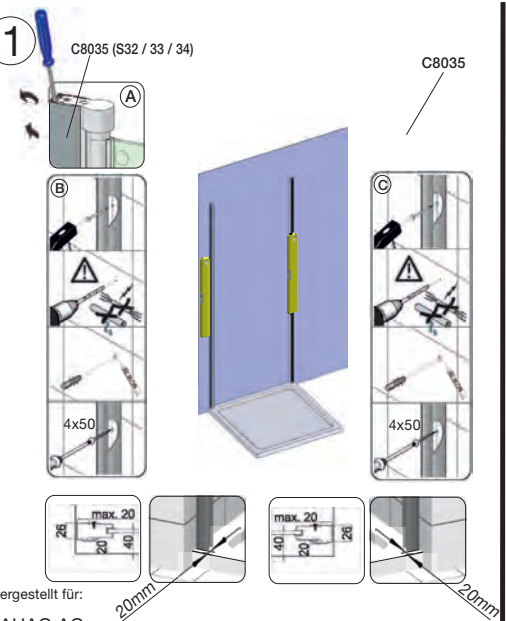
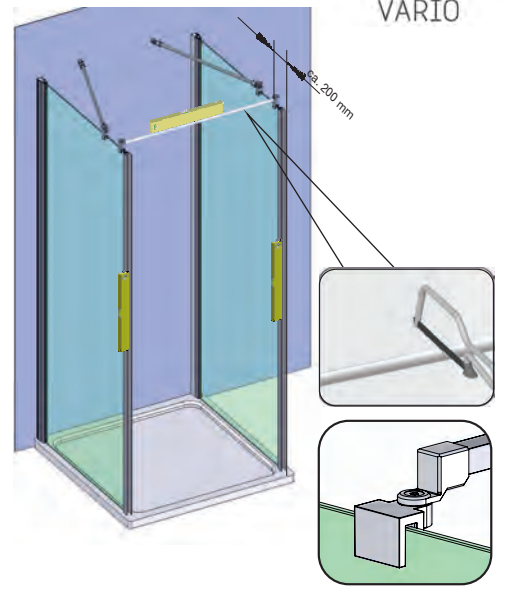
Bodenbeines-Einbaumaß
ground level installation dimension
Pose au sol
(mm)



3



4



5

