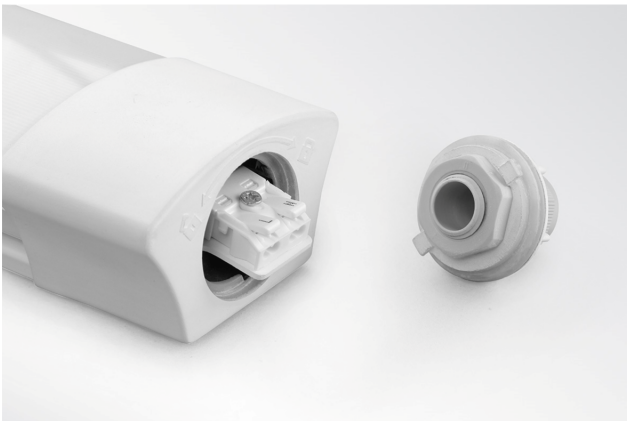


ECO STORM LINEAR PIR

- Controlado por sensor PIR con encendido/apagado a través del interruptor lateral
- Difusor Opaco
- Carcasa de Policarbonato, robusta y durable
- Tapas finales "Clip&Fit" para instalación rápida
- Sensor PIR con rango de detección de 5 metros y tiempo de encendido de 5 minutos
- Adecuado para el uso tanto en interior como en exterior



CAT NO.	LUMINARIA LÚMENES	EFICACIA	POTENCIA	MEDIDAS
ESL6P18W40	1800	100 lm/W	18W	2ft/600mm
ESL12P28W40	3600	100 lm/W	36W	4ft/1200mm
ESL12P36W40	3600	100 lm/W	36W	4ft/1200mm
ESL15P50W40	5000	100 lm/W	50W	5ft/1500mm

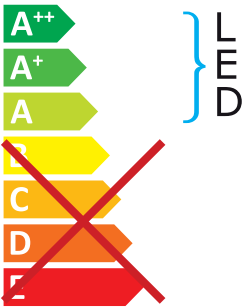


	LONG / DIA (mm)	ANCHO (mm)	ALTO / PROFUNDIDAD (mm)	PESO (kg)	L CENTRO FJACION (mm)	A CENTRO FJACION (mm)	CORTE DEL TECHO (mm)	LUMENES LUMINARIA (Llm)	POTENCIA LUMINARIA (W)	EFICACIA (Llm/W)	CCT (K)	CRI	UGR	CLASIFICACION IP	CLASIFICACION IK	FILAMENTO INCANDES. (°C)	LUMINARIA COLOR (RAL)	RANGO TEMPERATURA (°C)	VIDA UTIL (HR)	TEMPE. AMBIENTE V. UTIL. (°C)	FACTOR "L" (HR)	FACTOR "B" (HR)	RANGO DE VOLTAJE	FRECUENCIA	CODIGO PACK EMERGENCIA	GARANTIA (AÑOS)
ESL6P18W40	600	75	50	0.39	TBC	N/A	N/A	1800	18	100	4000k	≥80	TBC	IP65	IK08	TBC	TBC	TBC	25,000	25	70	50	220-240	50 Hz	N/A	TBC
ESL12P28W40	1200	75	50	0.47	TBC	N/A	N/A	3600	36	100	4000k	≥80	TBC	IP65	IK08	TBC	TBC	TBC	25,000	25	70	50	220-240	50 Hz	N/A	TBC
ESL12P36W40	1200	75	50	0.47	TBC	N/A	N/A	3600	36	100	4000k	≥80	TBC	IP65	IK08	TBC	TBC	TBC	25,000	25	70	50	220-240	50 Hz	N/A	TBC
ESL15P50W40	1500	75	50	0.69	TBC	N/A	N/A	5000	50	100	4000k	≥80	TBC	IP65	IK08	TBC	TBC	TBC	25,000	25	70	50	220-240	50 Hz	N/A	TBC

LUCECO



This luminaire contains built-in LED lamps.



The lamps cannot be changed in the luminaire.

874/2012



NORMATIVA

EN 60598-1	Luminaires - General requirements
EN 60598-2-1	Luminaires - Fixed general purpose
EN 61347-1	Lamp controlgear - Part 1: General and safety requirements
EN 61347-2-13	Lamp controlgear - Part 2-13 : Particular requirements for d.c. or a.c. supplied electronic controlgear for LED modules
EN 55015	Limits and methods of measurement of radio disturbance characteristics of electrical lighting and similar equipment
EN 61547	Equipment for general lighting purposes - EMC immunity requirements
EN 61000-3-2	Electromagnetic compatibility (EMC) - Part 3-2: Limits - for harmonic current emissions
EN 62471	Photobiological safety of lamps and lamp systems
2002/96/EC	Waste Electrical & Electronic Equipment (WEEE)
2011/65/EU	Restriction of the use of certain Hazardous Substances in EEE (RoHS)
(EC) No 1907/2006	The Registration, Evaluation, Authorisation and Restriction of Chemicals (REACH)



RoHS

