

















## MONTAGEANLEITUNG

-  MONTAGEANLEITUNG
-  ASSEMBLY INSTRUCTION
-  DE INSTRUCTIE VAN DE ASSEMBLAGE
-  ISTRUZIONE DELL'ASSEMBLEA
-  INSTRUCCIÓN DE ASAMBLEA
-  INSTRUCTION DE MONTAGE
-  NÁVOD K MONTÁŽI
-  MONTERINGSANVISNING

-  MONTAJ TALIMATI
-  ASENNUSOHJE
-  BRUGSANVISNING
-  BRUKSANVISNING
-  UPUTE ZA MONTAŽU
-  NAVODILA ZA MONTAŽO
-  SZERELÉSI ÚTMUTATÓ
-  INSTRUCTIUNI DE MONTAJ



Modell-Nr.

# 12090

ART.-NR. FRONT KORPUS

12091  Silber

12092  Silber

12094  Silber

12097  Silber

12096  

Friedrich Küpper GmbH  
Friedrich-Küpper-Weg  
54570 Berlingen  
Deutschland

Telefon +49 (0) 65 91 - 95 42 0  
Telefax +49 (0) 65 91 - 95 42 17  
E-Mail [info@friedrich-kuepper-gmbh.de](mailto:info@friedrich-kuepper-gmbh.de)  
Internet [www.friedrich-kuepper-gmbh.de](http://www.friedrich-kuepper-gmbh.de)

## EINZELTEILE / PIECES

A

1x

772 mm x 475 mm



B

1x

772 mm x 475 mm



C

1x

548 mm x 473 mm



D

1x

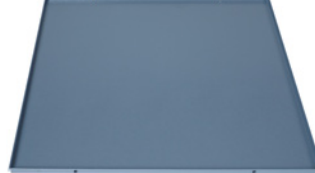
548 mm x 473 mm



E

1x

474 mm x 480 mm



K

1x

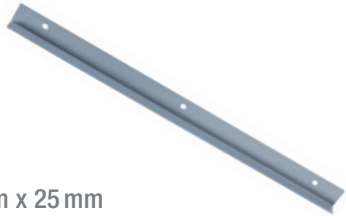
403 mm x 468 mm



L

1x

400 mm x 25 mm



Y

1x

600 mm x 600 mm



BEUTELINHALT / BAG CONTENT



BENÖTIGTES WERKZEUG / NEEDED TOOLS



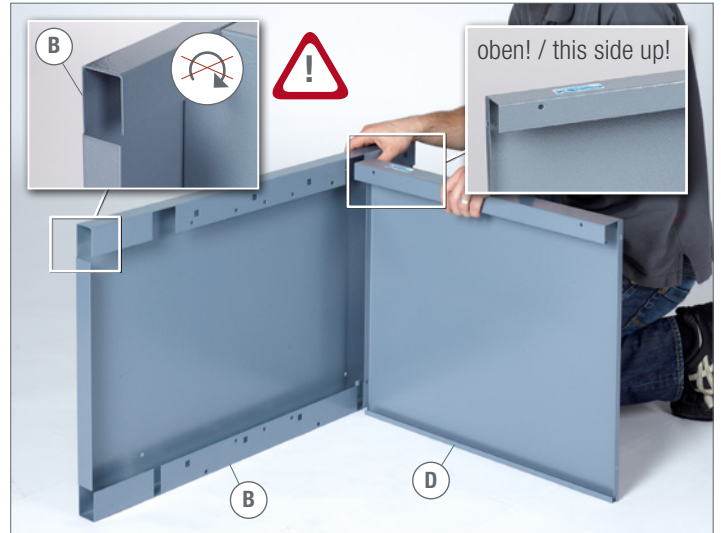
1.



2.

2x M5 2x M5 x 10 2x 5,3 MM

② SW 8 ① PH 2 X 100



3.

2x M5 2x M5 x 10 2x 5,3 MM

② SW 8 ① PH 2 X 100



4.  2x M5  2x M5 x 10  2x 5,3 MM ②  SW8 ①  PH2X100



5.  6x M5  6x M5 x 10  6x 5,3 MM ②  SW8 ①  PH2X100



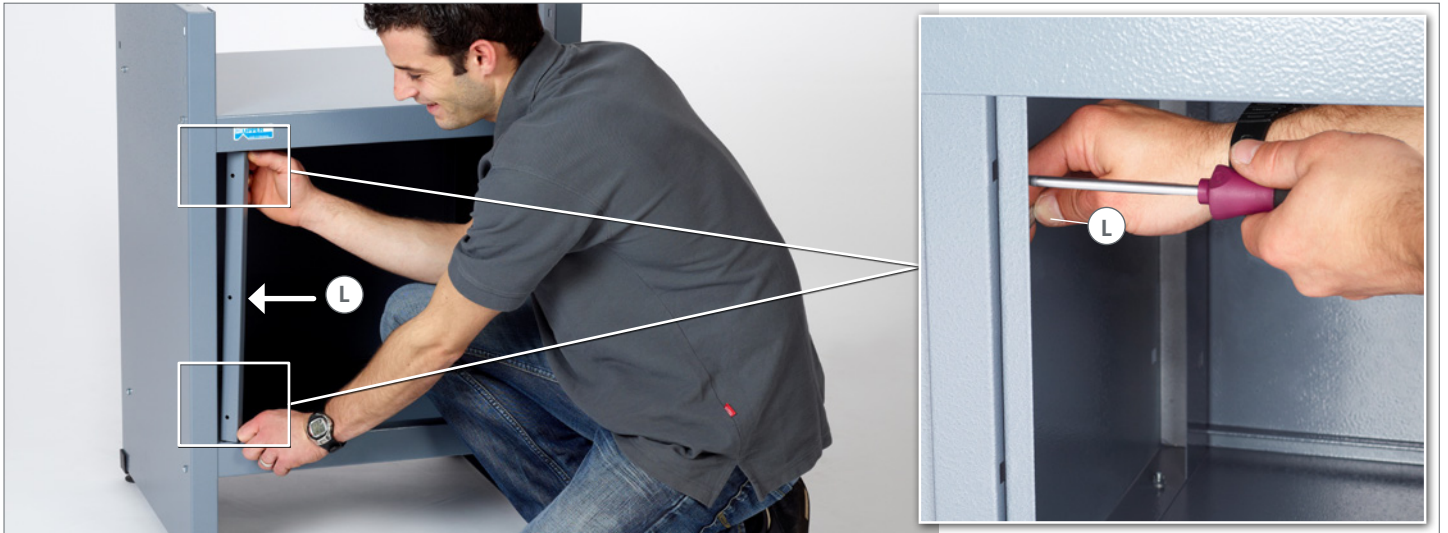
6.  4x M8  4x  4x ⑤ 



7.

2x M5 2x M5x10 2x 5,3mm

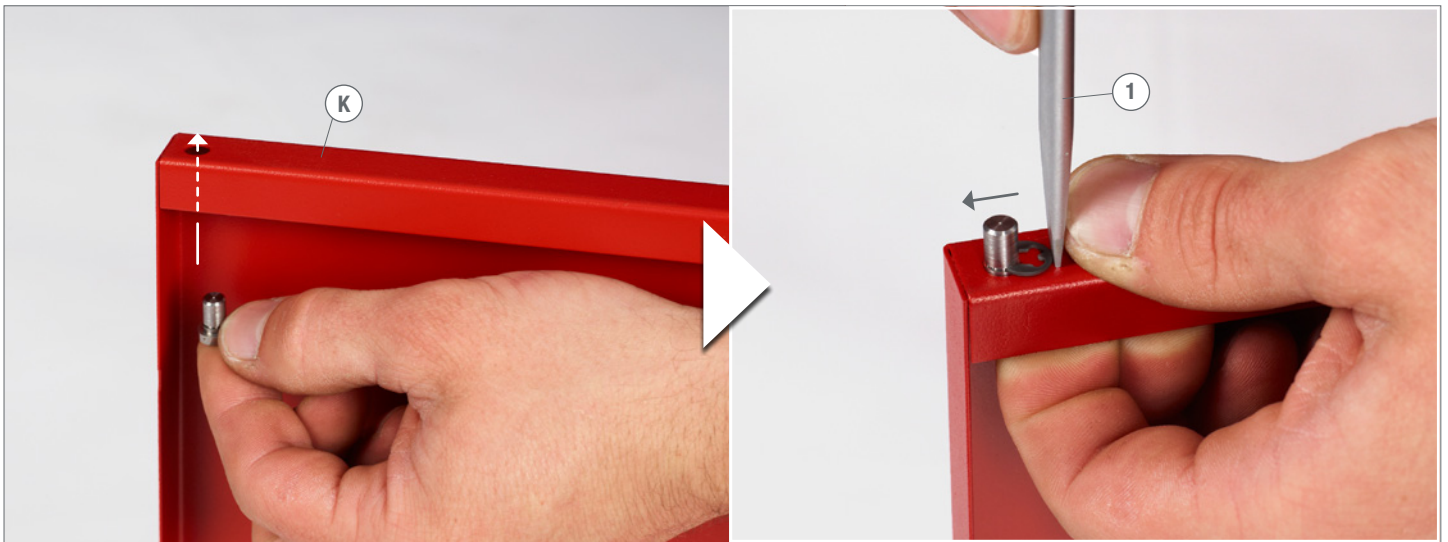
② SW 8 ① PH 2x100



8.

1x 1x 6x12

① Schlitz 6,5 x 150

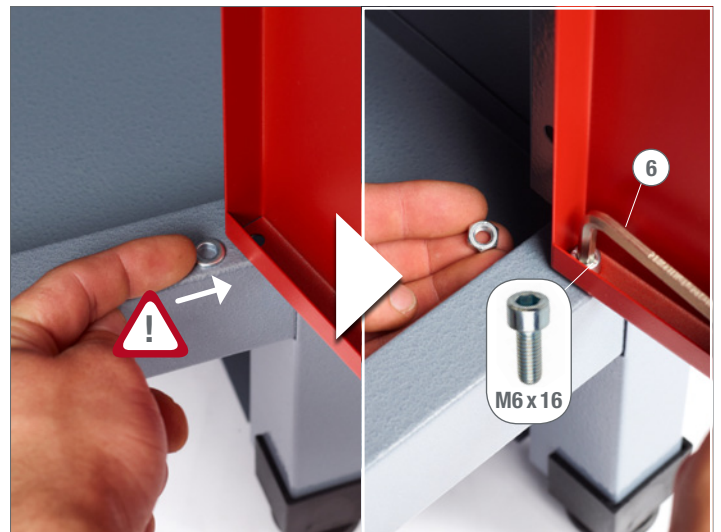


9.

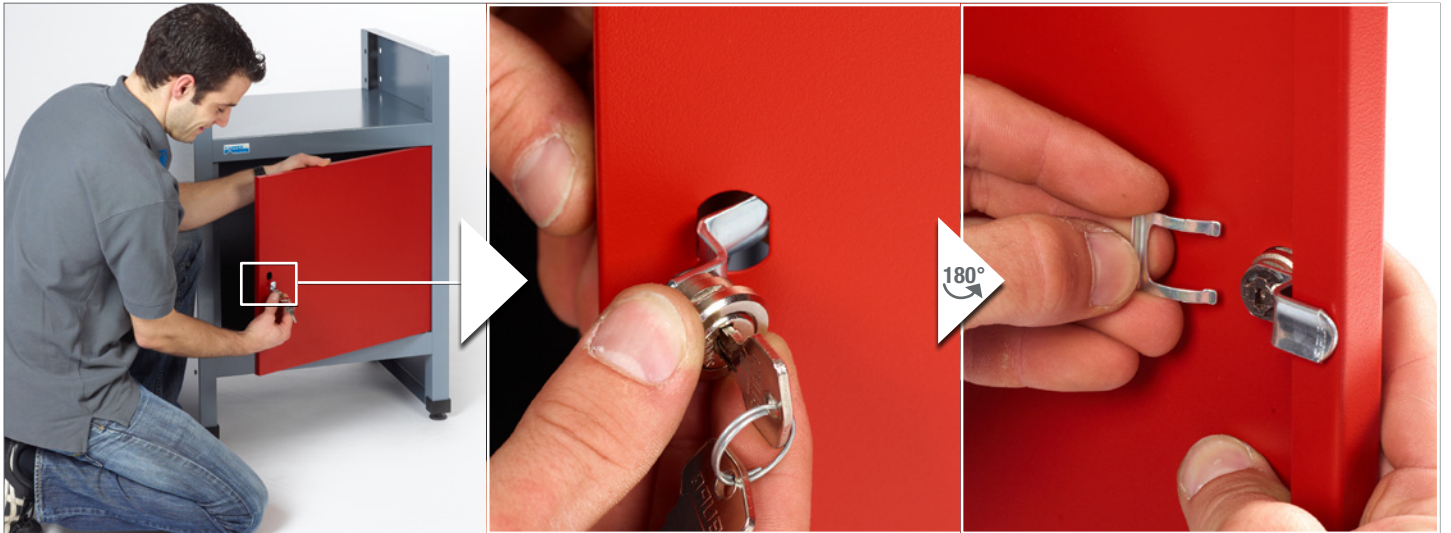
10.

1x M6 1x M6x16 1x 6,4mm

② SW 10 ⑥



11.  1x  1x



12.

 8   7



13.

 4   3



14.

 4x 5,5x19

 2  SW 8  SW 8





Modell-Nr.

**12090**