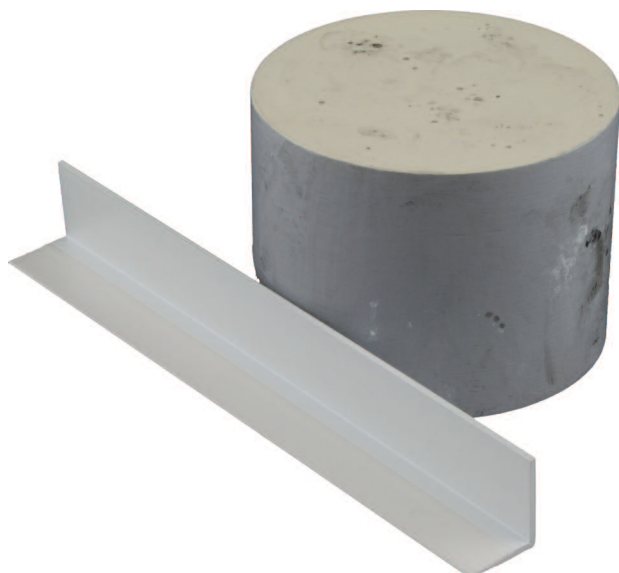


# TECHNICAL DATA SHEET



VWS Befestigungstechnik GmbH  
Siemensstraße 2  
D - 72805 Lichtenstein/Württemberg  
Tel.: 00 49 (0) 71 29 / 6 95 - 1 00  
Fax: 00 49 (0) 71 29 / 6 95 - 1 50  
www.vws.de

page	1/1
as of	07.2012
revision	-



## 1569

**connection profile  
for mineral ceilings  
for round connections  
(e.g. columns)  
convex or concave  
PVC  
28 x 22.5 mm  
10 pieces  
2.5 / 3.0 m**

Application: dry-lining

PVC corner profile to realise curved connections of mineral fibre ceilings, e.g. columns or curved walls. The profile is suitable for convex and concave arches.

External diameter (convex)  $\geq 0.28$  m

Internal diameter (concave)  $\geq 2.45$  m

Possible waves at the support flange are smoothed with warm air appliance, e.g. hairdryer

Equipment of the product:

Right-angled co-extruded PVC profile out of impact resistant and UV- and weather-proof PVC with one blade out of soft PVC

Important details:

Cool and dry storage

Horizontal transporting and stocking

All details complies the up-to date our knowledge and experience. Our information characterise simply the character our products and don't account for contractual legal relationship. They don't absolve the customer from verifying our products to their applicability for the contemplated usage on their own. We reserve the right for changing due to technical or planning laws. Product-drawings on this sheet aren't true to scale. With publishing this technical data sheet are all back issues invalid. You can find the latest issue of the technical data sheets of our assortment at <http://www.vws.de/tmb/en>. The stand of the revision is essential for the use of the products at the date of mounting. Printed versions could differ from the effectual stand of revision.