

LOGOCLIC[®]

How I like to live!



5936 | Decor: Oak Venetia | p. 41



**TOP QUALITY
AND BEST DESIGN**

EXCLUSIVE OFFER BY  **BAUHAUS**

www.logoclic.info | Laminate flooring



FINALLY AT HOME

Our home is our safe haven, a space for development and, of course, a place for living. Therefore, we want our home to be convenient, cosy and comfortable. As a centre of focus, LOGOCLIC laminate flooring reflects the flooring of a particular style – and forms the basis of every interior design. It is the foundation – similar to the character of a person. Its style shapes our housing space – the space where we meet with friends, spend valuable time with each other or simply relax and enjoy life.

The fantastic, natural reproduction of natural decors makes it possible to create very individual room moods. Warm wood tones, stylish high-gloss decors or noble stone flooring – everything is possible with LOGOCLIC laminate flooring!

DESIGN, COMFORT AND QUALITY

Quality, comfort and design combine to flooring that is full of vitality, which you can see and feel. Innovative technologies, up-to-date design trends and naturally appealing surfaces convince.



K036 | Decor: Barnwood Nuoro | p. 40



Surrounding V-joints create an authentic parquet look p. 6



LOGOCLIC Laminate floors: withstanding life's challenges p. 8



For the environment's sake – based on sustainability p. 10



Surfaces which stimulate your senses p. 18



Skirtings, profile and accessories p. 64



Insulation: Eco Cork

CONTENTS

LOGOCLIC INFORMATION	p. 2	FAMILY	from p. 22
PRODUCT OVERVIEW	p. 20	SILENTOS	from p. 28
SKIRTINGS, PROFILE, ACCESSORIES	p. 64	CLASSICO	from p. 32
INSULATION	p. 66	VINTO	from p. 36
INSTALLATION	p. 70	CERAMICO	from p. 50
ENQUIRY	p. 71	AMBIENTA	from p. 56
		ELEMENT	from p. 60





“SATISFACTION IS THE FIRST STEP TO HAPPINESS MOVING IN!”

Guðrun Zydek



SILENT FLOORING WITH FOOTFALL AND IMPACT SOUND INSULATION

Solid wood floor has a special sound when walking across it: soft, warm and cosy. An effect that can hardly be achieved with laminate – unless you use a **LOGOCLIC** product such as Ambianta or Silentos. It features a very special footfall and impact sound insulation.

ANTISTATIC

Everybody has experienced this before: you unsuspectingly touch a door handle at home and get a shock. The cause of this harmless but unpleasant electric discharge is the electrostatic charging. The antistatic system, integrated into the **LOGOCLIC** Ambianta and officially certified, provides protection against these unpleasant electric shocks.



8573 | Decor: Oak Como | p. 59

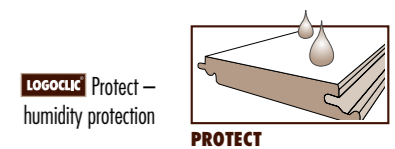


INNOVATIVE AND SUSTAINABLE

LOGOCLIC laminate floors not only create a unique feeling of living comfort, but also feature innovative technologies, high-performance properties and great ideas – e.g. antistatic equipment which reduces the electrical charge and discharge. Or integrated walking and impact sound absorption that not only makes it unnecessary to delay additional material, but also has a positive effect on ambient room noise. And the

LOGOCLIC Protect Principle provides exceptionally good moisture protection. All **LOGOCLIC** products are light, insensitive, resilient and strong. Real quality workmanship – which is not least also due to the fact that all **LOGOCLIC** products are made in Germany. Sustainable forestry, which constitutes the foundation for raw materials, is and will always remain the main focus.

The warranty covers wear of the top layer. The warranty period starts on the purchase date. For the details of each warranty, please refer to the product pages.





NEVER-ENDING — ENDLESS TIMBER FLOOR LOOK

Endless installation is achieved by seamless transitions from one panel to the next one. With its hardly visible short-side joints and long-side V-joints, the panels visually enlarge your room. Your flooring gives the charming impression of authentic timber floor with a continuous look.

TRIMMED U-JOINT

LOGOCLIC in tile and natural stone look is a laminate that combines decor and functionality in an impressive way. The lifelike jointing achieved by its circumferential realistic U-joint creates an ambience that is reminiscent of holiday and the sea. As it can be installed in cross joint look, the flooring gives the impression of authentic tiles.

Seamless transitions from one panel to the next one. Creates the character of a continuous look.



Authentic stone effect through circumferential realistic joint.

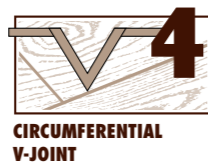


8456 | Decor: Oak Palazzo | p. 45

Perfect timber floor look through bevelled longitudinal edges of the panels.



Micro joint on all 4 panel sides creates an authentic parquet effect.



TRIMMED V-JOINT

The long-side joint of **LOGOCLIC** laminate flooring does not only convince by its top quality and extremely easy installation but creates a generous impression of every room. **LOGOCLIC** laminate flooring with its circumferential V4-joint has the charm of genuine timber floor. The joints give your laminate flooring an attractive timber floor effect and create a unique ambience.

TAKING NATURE AS A MODEL

Do you want your rooms to appear as large as possible and nevertheless become a cosy living oasis? Bring this special flair into your home.

LOGOCLIC laminate flooring provides a new level of individual interior design. There is hardly any argument that is more convincing than the combination of quality and design. Products that are designed according to this formula are almost automatically winners. **LOGOCLIC** laminate floors allows individual living room design to reach new heights thanks to their fantastic and natural reproduction of wood and stone decors.

Thus, flooring such as **LOGOCLIC** Vinto convinces by its distinctive charm of classical parquet. The flooring is available in different widths either with circumferential or with two-sided V-joint.

LOGOCLIC Ceramico's natural effects and surrounding, realistic U-joints offer a completely different contrast. The impression of genuine tiles is underlined by the "Antique-Stone" and "Stone-Pizzara" surface structures.





“HOME IS WHERE THE HEART FINDS A HOME.”

Fred Ammon

LOGOCLIC – SIMPLY WITHOUT COMPROMISE

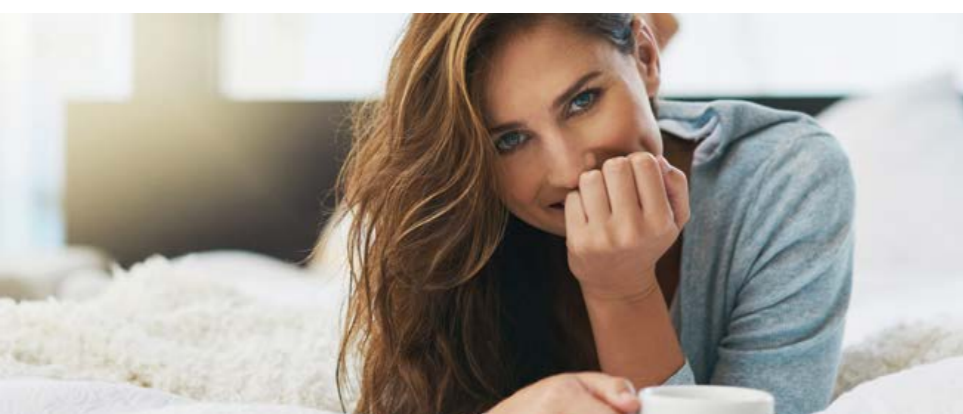
You should be able to enjoy life at home without having to think about the flooring. We had already given **LOGOCLIC** some thought – and the result: A laminate floor that can do it all. We of **LOGOCLIC** believe: laminate flooring should adjust to your life and not the other way round!

A big party with friends at home is a fantastic event if there weren't the ladies who are reluctant to put off their high heels. Or the drop of red wine that might fall on the floor late at night. Neighbours who complain about the noise.

With **LOGOCLIC** laminate floors, you can relax and enjoy your parties – they are highly resilient and at the same time extremely easy to clean: You can easily sweep away non-sticking dirt with a broom or remove it with a vacuum cleaner. If the flooring shows heavier dirt, such as grease stains, footprints or heel stripes, these can easily be wept away using a wet cloth or a well wrung-out cleaning mop.



5967 | Decor: Oak Alba | p. 59

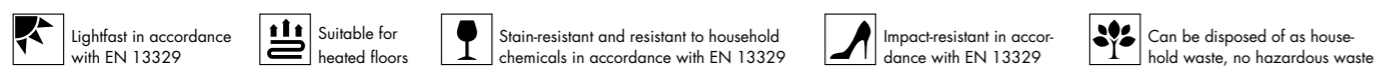


PRODUCT-SPECIFIC QUALITIES

- Very quiet: Special insulation and surface coating reduce walking and impact noise.
- Antistatic: The antistatic system integrated into **LOGOCLIC** laminate flooring and officially certified ensures that annoying discharges are almost impossible.

ALL **LOGOCLIC** PRODUCTS FEATURE THESE CHARACTERISTICS. WITHOUT EXCEPTION.

- Easy-care, dust-repellent and stain-resistant
- Resistant to household chemicals
- Suitable for laying on underfloor heating
- Easy installation
- Robust: **LOGOCLIC** flooring is impact, scratch and abrasion-resistant
- Lightfast: **LOGOCLIC** laminate flooring does not change colour due to insolation*
- Natural: **LOGOCLIC** laminate flooring consists of 90% wood
- Suitable for persons with allergies: due to its closed surface **LOGOCLIC** laminate flooring offers no nutrition and reproduction base to allergenic microorganisms.



* For more information, see the **LOGOCLIC** warranty card at www.logoclic.info. ** More information about the eco-labels on page 10 of the catalog. *** Does not apply to ELEMENT. **** ELEMENT: TÜV-PROFICERT product number: 70 720 5604-1



“IF YOU TRULY LOVE NATURE,
YOU WILL FIND BEAUTY EVERYWHERE.”

Vincent van Gogh



SUSTAINABILITY AS A MATTER OF PRINCIPLE



LOGOCLIC laminate flooring is made of 90% wood. We also process residual wood during manufacturing, since we value sustainability and environmentally-friendly production. Therefore, using renewable raw materials forms part of our principles.

All **LOGOCLIC** laminate floors are PEFC-certified. This is not only good for the environment but also looks extremely good!

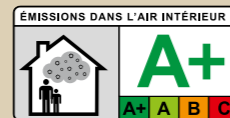
LOGOCLIC laminate floorings are low-emission and are produced without using pesticides or harmful heavy metals. Moreover, they are durable and hard-wearing and can be disposed of as household waste without problems.

Thanks to their closed surface they do not offer allergenic microorganisms any appropriate living space so that they are especially suitable for persons with allergies.

TOP QUALITY AND BEST DESIGN

LOGOCLIC laminate floorings are products with an innovative technology that make careful use of our natural resources. They are produced subject to highest quality demands, designed in modern trends and equipped with healthy surfaces. Thus, they create a unique ambience for your home.

Further information can be found here:



Indication of the degree of emission of volatile substances in indoor air, which pose a toxic risk during inhalation, on a scale A + (very low emissions) to C (high emissions).



ARRIVE. PAUSE. RECHARGE.

Wood is a raw material with which we are deeply rooted. It gives us a feeling of security and is characterised by indoor climate properties with which we will always feel good also physically.



“MUCH MORE THAN OUR ABILITIES, IT IS OUR CHOICES THAT SHOW WHO WE REALLY ARE.”

Joanne K. Rowling

FAMILY laminare class 31		SILENTOS laminare class 31		CLASSICO laminare class 32		VINTO laminare class 32		VINTO 10 mm laminare class 32		CERAMICO laminare class 32		AMBIENTA laminare class 33		ELEMENT laminare class 34	
7 mm THICKNESS		7+2 mm THICKNESS		8 mm THICKNESS		8 mm THICKNESS		10 mm THICKNESS		8 mm THICKNESS		8+2 mm THICKNESS		4 mm Thickness	
 ca. -50% ca. -25% EXTREMELY SILENT				 CIRCUMFERENTIAL V-JOINT		 CIRCUMFERENTIAL V-JOINT		 TRIMMED U-JOINT		 ca. -50% ca. -30% EXTREMELY SILENT		 ca. -50% ca. -30% EXTREMELY SILENT		 ANTISTATIC	
15 YEARS WARRANTY 31 LAMINATE CLASS				20 YEARS WARRANTY 32 LAMINATE CLASS		32 LAMINATE CLASS 2 m LONGBOARD				30 YEARS WARRANTY 33 LAMINATE CLASS		30 YEARS WARRANTY Laminare class 34			



5953 | Decor: Diamant Oak | p. 49

Laminate class	Living area						Commercial area						
	Living room	Bedroom	Kitchen	Hallway	Dining room	Child's bedroom	Commercial area	Office	Conference rooms	Shop	Apartment store	Multi-purpose hall	Control room
31 LAMINATE CLASS													
	For all living areas they undergo intensive use						For commercial areas with low usage						
32 LAMINATE CLASS													
	For all living areas they undergo intensive use						For commercial areas with medium usage						
33 LAMINATE CLASS													
	For all living areas they undergo intensive use						For commercial areas that undergo intensive usage						
34 LAMINATE CLASS													
	For all living areas they undergo intensive use						For commercial areas with particularly intensive use						

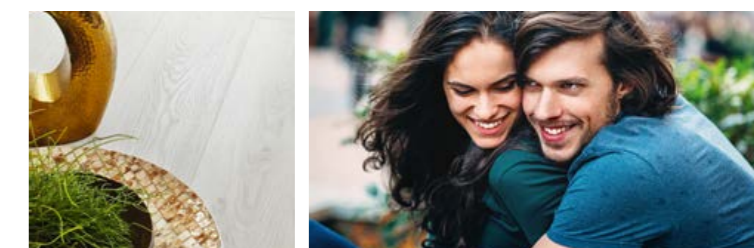
WHICH FLOORING FOR WHICH ROOM?

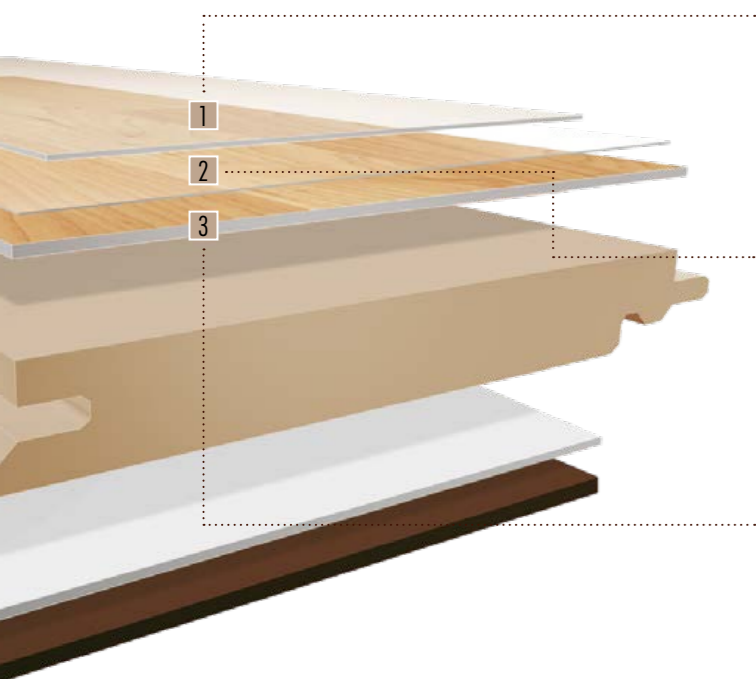
People are different. Their needs are also different. As are their expectations regarding the design of their homes. While the selection of the colour and decor of laminate flooring usually

depends on the personal taste of the occupant, it is essential to choose the qualities of the flooring with a view to the stresses to which it is exposed

LOGOCLIC – FOR ALL REQUIREMENTS

Nevertheless, there are qualities which only particular products of our LOGOCLIC range have. We developed them to make your life at home even more comfortable and adjust it even more to your personal space of living.



LOGOCLIC®


1 OVERLAY

Overlays are light, transparent paper webs that are wetted with liquid melamine resin in an impregnation bath. As a carrier material, the paper absorbs the resins.

2 ANTISTATIC PAPER

All antistatic floorings have an innovative layer directly below the surface that offers comprehensive protection against unpleasant discharging. The antistatic floor coverings meet the requirements for EN 1815.

3 DECOR LAYER

Decor papers are printed papers with wood or stone structure imitations. The printed papers are soaked in melamine resin and pressed on the top side of the carrier plate under heat and pressure together with the overlay.

4 HDF CARRIER MATERIAL

This is a wood material board made from wood fibre. It has a very homogeneous structure and closed surfaces as well as a high density and, thus, also an improved bending and transverse tensile strength.

5 COUNTERACTING

The counteracting papers consist of resin-impregnated papers and are attached to the bottom side of the laminate panels in order to achieve a stress equalisation to the overlay and the decor paper on the top side.

6 FOOTFALL AND IMPACT SOUND INSULATION

This unique footfall noise and impact sound system involves a 2.0 mm thick PO foam which ensures that footfall noise in the room is reduced by approx. 50%* and impact sound noise reduced by approx. 25 – 30%*. The **LOGOCLIC** Ambienta and Silentos product groups are fundamentally equipped with this and copes easily with all stresses. They are also ideally suited for laying onto hot water floor heating systems.**



3967 | Decor: Walnut Livorno | p. 35



TO ALL HOUSE-BUILDERS AND DEVELOPERS

You can easily lose sight of the big picture when building or renovating a house – whenever there is a number of different works. This is where the BAUHAUS® Installation Service can provide great help in planning and coordination. Fixed price quote for products and services, regular checks and acceptance certificates of the works completed – for your peace of mind!





“QUALITY IS THE PRODUCT OF LOVING ATTENTION TO DETAIL”

Andreas Tenzer



WIDTH X LENGTH

- [1] 2000 x 192 mm longboard
- [2] 1276 x 327 mm tile decor
- [3] 1285 x 327 mm tile and wood decor floors
- [4] 1285 x 192 mm standard size
- [5] 1285 x 242 mm plank look



3970 | Decor: Oak Acere | p. 35



family silentos
 classico vinto ceramico
 ambienta element



AWARDS AND QUALITY

LOGOCLIC laminate floors truly seem to leave nothing to be desired – at least as implied by the numerous awards. The notably good and simple method of installation is consistently stressed, which not only allows professionals to cleanly and flawlessly lay laminate flooring, but even beginners can simply and conveniently achieve excellent results with **LOGOCLIC**. And this is only achieved if, in addition to a flawless laying, the overall image is perfect. When it comes to **LOGOCLIC** laminate floorings, its attractive appearance consistently garners special

mentions. But the method of installation and the appearance are only two of many points for testers. How good is the workmanship in general – do any open joints, for example, remain after processing? How good are the acoustic characteristics and sound insulation? What about the electrostatic surface tension and how sensitive are the surfaces against dirt, such as sand? In all these and other points, laminate flooring from **LOGOCLIC** is very good.





SURFACES THAT REACH YOUR SENSES.

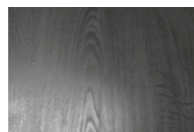
Whether it's tiles or wood – every material has its own charisma. And this must be reproduced in a lifelike way. Using sophisticated technologies it is even possible today to feel annual rings on the laminate floorboard.



K056 | Decor: Oak Verona | p. 25



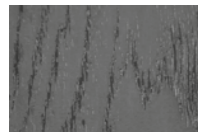
Used Wood (UW)
Natural patinated wood structure



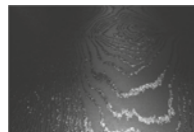
Historic Oak (HO)
Authentic interface



Retro Chestnut (RC)
Matte surface with extremely detailed synchronous pore



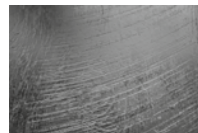
Vintage Hickory (VH)
Matte surface with different gloss effects in the pores



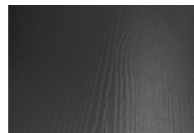
Living Pore (LP)
Matte surface with glossy synchronous pores



Grained Timber (GT)
Authentic interface



Barnwood (BW)
Authentic interface



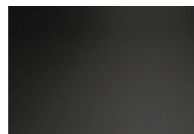
Rustical Finish (RF)
Structured surface



Nature Line (NL)
Natural wood texture



Flanders Oak (FN)
Brushed, matte surface with shimmering pores



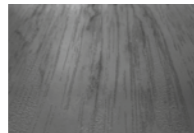
Super Matt (SU)
Natural oiled surface



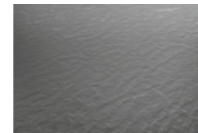
Palace Oak (PO)
Authentic interface



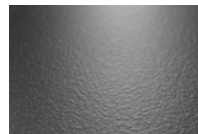
Hand Carved (HC)
Deep matte-brushed surface with extremely detailed synchronous pores



Hickory Scrape (HS)
Authentic interface



Hard Rock (HR)
Authentic interface



Rough Stone (RS)
High quality authentic stone structure



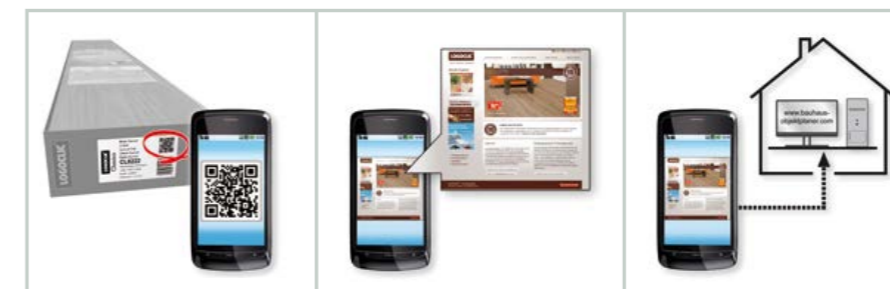
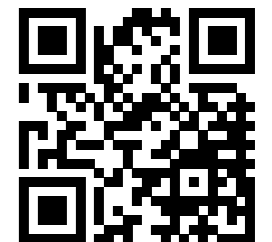
Antik Stone (AS)
Authentic stone structure



Stone Pizzara (SP)
Natural slate structure

QR CODE. WHAT IS THAT?

The QR code is a matrix in which data are saved. These data can be sent to your cell phone. All you need is a smartphone with a camera and the appropriate software. Then simply scan the code listed below and you will have ready access to all information related to the product you like on your phone.



Obtain up-to-date information on your phone using **LOGOCLIC** QR Codes. Just scan and surf!

Visit us at our website, follow us on Twitter and like us on Facebook. Find us on Instagram and be inspired by Pinterest:

www.logoclic.info

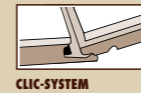


www.twitter.com/logoclic
www.facebook.com/logoclic



www.instagram.com/logoclic
www.pinterest.de/logoclic

PRODUCT FEATURES



family

from page 22

15

31

7 mm



silentos

from page 28

15

31

7+2 mm



classico

from page 32

20

32

8 mm



vinto

from page 36

20

32

8 mm
10 mm



ceramico

from page 50

20

32

8 mm



ambienta

from page 56

30

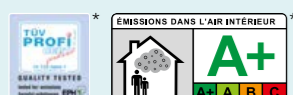
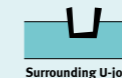
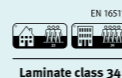
33

8+2 mm



element

from page 60



** Available for selected decor floors *** The reduction in footfall and walking sound level is dependent on the subsoil structure.

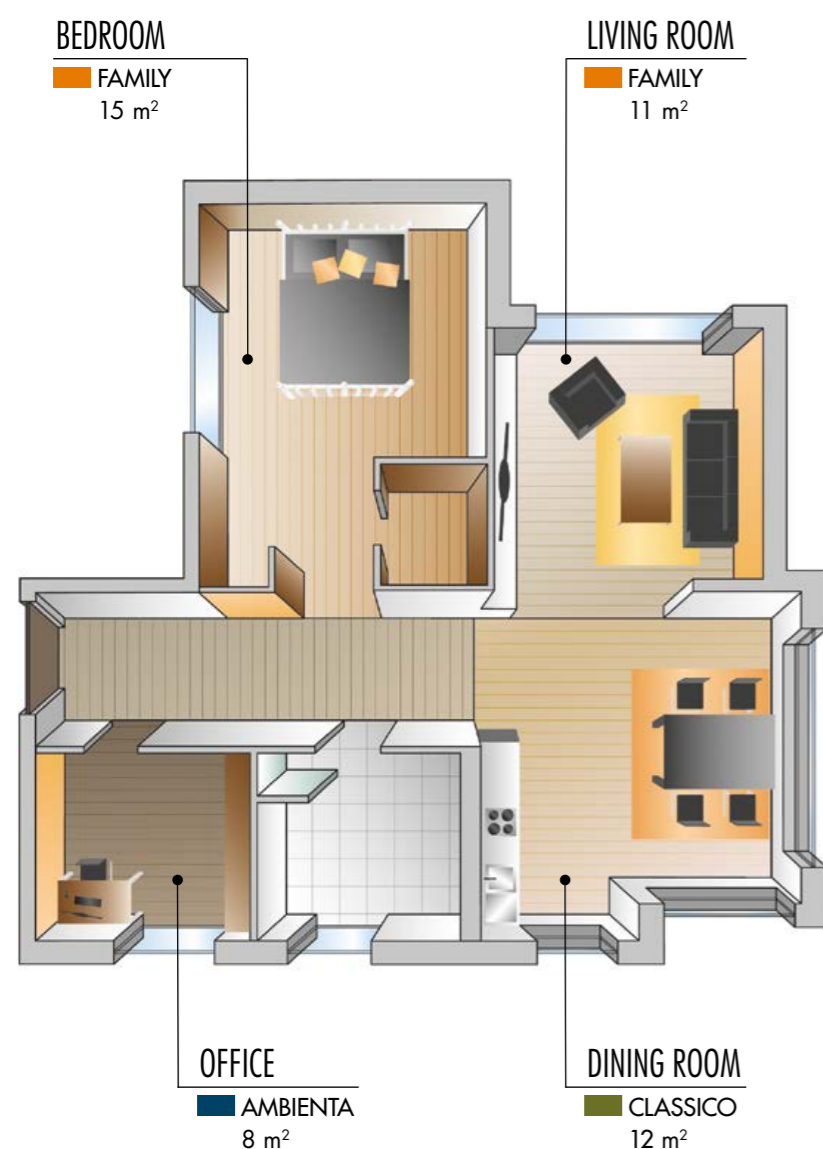
**** Tested bacterial strains: Staphylococcus aureus and Escherichia coli.

LOGOCLIC® family



“A HOUSE IS A STRUCTURE THAT IS BUILT,
BUT A HOME IS CREATED BY THOSE LIVING THERE.”

Hazrat Inayat Khan



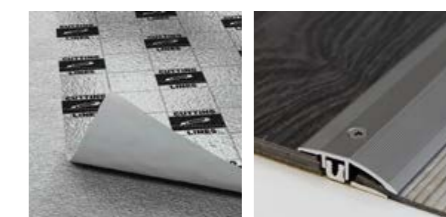
THE DREAM HOME

The decision has been made – living together at last. And the right home is also quickly found – a dream...if it weren't for this shabby floor, which almost puts a damper on that dream. What? Giving up so easily? Out of the question! Your desires can finally and very easily become reality with the **LOGOCLIC** Family line. The large decor variety and the low prices are simply wonderful. The installation work is child's play thanks to the floorings' click-system. And if one day you should have plans for a bigger home, then the floor can be easily taken along.



PLANNING AND ESTIMATING

Which characteristics should the new floor have, how should it look and how much may it cost? All of this must, of course, be explained during planning. In addition to the overall area to be laid, about 10% waste must be factored in. Moreover, it is necessary to verify whether insulation, profile, along with skirtings and other accessories, are required.



LOGOCLIC® family

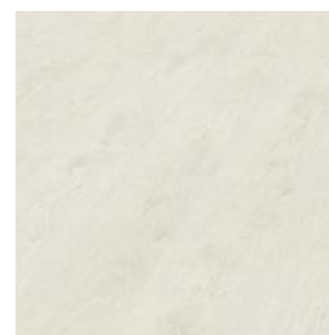
AS NATURAL AS US



We love it when things work. When they are always there, one can enjoy them and there is no need to worry whether this might change some day. Of course, flooring must also please, but above all it must do its service. It must withstand our life, satisfy our needs – and this for as long as possible.



K034 | Decor: Oak Florence



8373 Oak Levegno White, LD (RF)



K034 Oak Florence, LD (GT)



8213 | Decor: Pear Reno

1285 x 192 x 7 mm
PACKAGE: 10 PANELS | CONTENT: 2,47 m²



8643 Ash Bologna, SB (GT)



8213 Pear Reno, SB (SU)



K056 Oak Verona, 2S (GT)



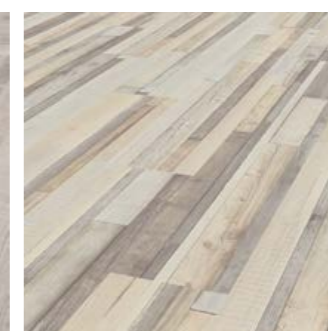
4295 Oak Virani, LD (NL)



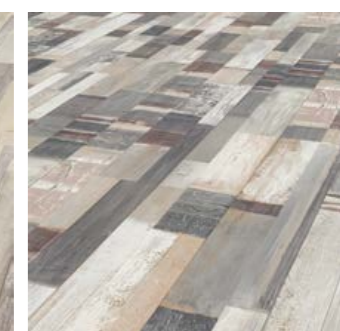
8463 Oak Narvik, SB (SU)



K039 Siena Driftwood, Multi (GT)



5968 Monte Casino, Multi (NL)



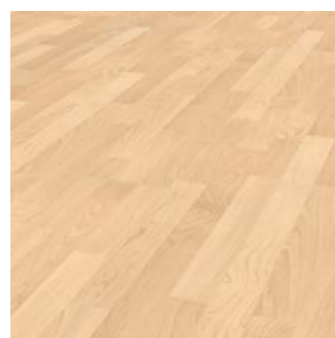
K042 Modena, Multi (GT)



LOGOCLIC® family



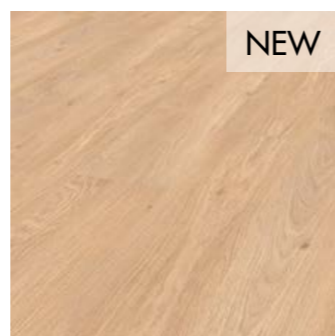
49 Beech Odenwald, SB (GT)



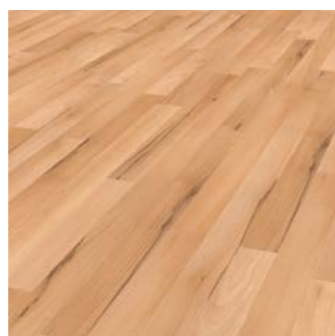
1668 Maple Appalachia, SB (GT)



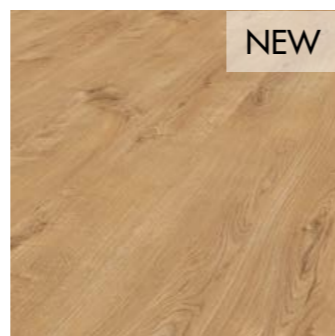
8220 Oak Ancona, SB (GT)



8714 Oak Pizzo, LD (NL)



8814 Beech Germana, SB (SU)



5985 Dolo, LD (NL)



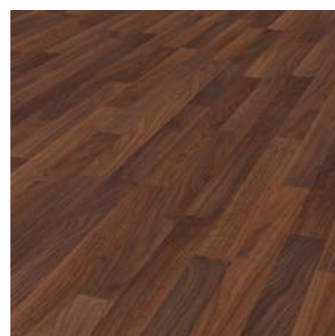
8521 Oak Cortona, 2S (RF)



4291 Oak Prizzi, 2S (NL)



K038 Narni Driftwood, Multi (GT)



5559 Walnut Torent, SB (GT)



4280 Oak Barga, 2S (NL)



K260 Oak Malaga, 3S (SU)



5950 Walnut Massa, LD (NL)



5952 Elm Imola, LD (NL)

1285 x 192 x 7 mm
PACKAGE: 10 PANELS | CONTENT: 2,47 m²

When you choose the **LOGOCLIC** product group family, you are choosing a solid laminate floor that meets the high demands of living areas, whether in the living room or children's room, in the hallway or kitchen. It always looks modern and contemporary and makes sure that you feel at home.



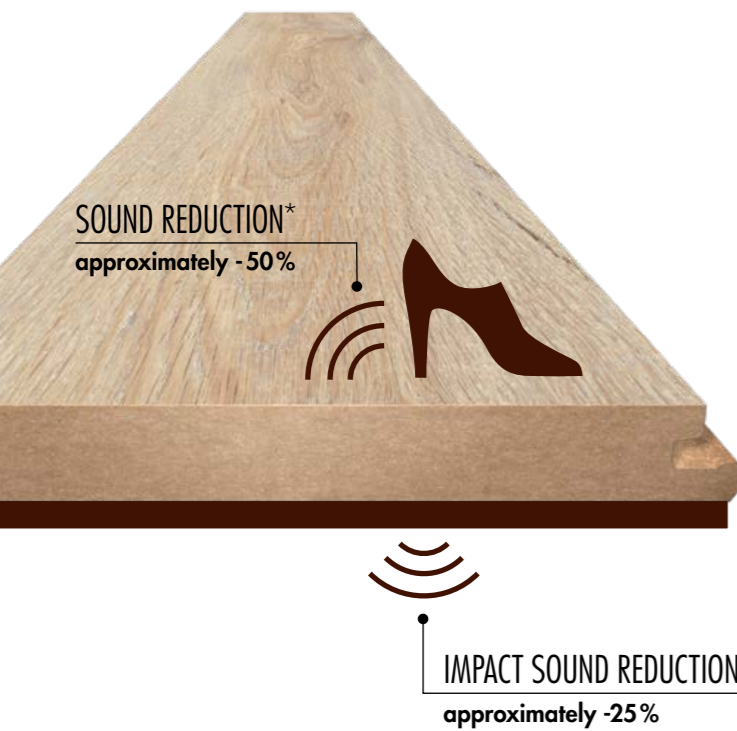
5952 | Decor: Elm Imola



LOGOCLIC® silentos

CLICK LAMINATE WITH INTEGRATED FOOTFALL AND SOUND INSULATION

Avoid unnecessary noise in your home! The **LOGOCLIC** Silentos laminate floor, with its integrated impact sound insulation, significantly reduces noise caused by footsteps or chair backs. **LOGOCLIC** Silentos has footfall sound insulation. As a result, the laminate floor closely resembles the sound of a solid wood floor.



3969 | Decor: Hickory Morino | p. 31

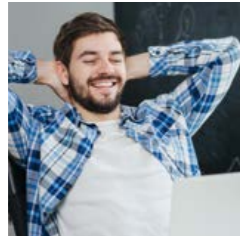


LIKE ON WALKING VELVET PAWS — THE QUIET FLOOR

The click-laminate **LOGOCLIC** Silentos is available in a wide range of different wood finishes. From the dark oak Rapollo to light oak Roma has something for every taste.



LOGOCLIC® silentos



With laminate flooring from the **LOGOCLIC** Silentos product group, your living comfort – and thus your quality of life – is further enhanced. The integrated footfall insulation creates a sense of sound that is very close to that of real wood, and, in addition, positively influences the overall sound throughout the space.



K040 | Decor: Messina Driftwood



4282 Oak Sarno, 2S (NL)



7843 Oak Roma, LD (NL)

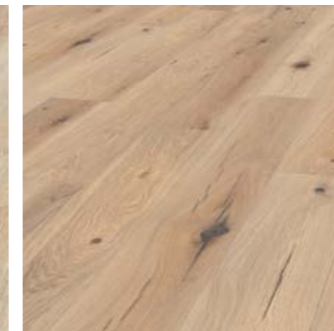


7843 | Decor: Oak Roma

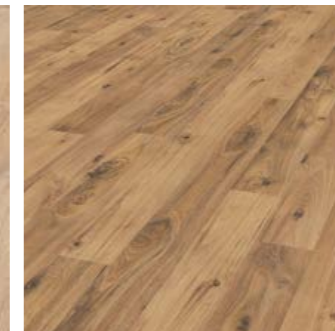
1285 x 192 x 7+2 mm
PACKAGE: 8 PANELS | CONTENT: 1,97 m²



5236 Oak Mira, LD (RF)



K269 Oak Forli, LD (GT)



3969 Hickory Morino, 2S (NL)



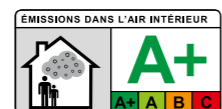
8267 Pine Verola, LD (RF)



K040 Messina Driftwood, SB (GT)



8735 Oak Rapollo, LD (RF)



** The reduction in footfall and walking sound level is dependent on the subsoil structure.



“ONCE THE HOUSE IS BUILT,
THE CARPENTER IS FORGOTTEN.”

from India



INDIVIDUAL HOUSE CONSTRUCTION

You're finally moving into your own four walls – your home is ready. It has taken long enough. The first thoughts on whether to do it or not, then the first consultations with the bank and architect – it was all very exciting. And now it is there, your dream home...ready to take us in. But the question of whether everything has been done correctly still remains. Was everything taken into consideration? There is so much which must be considered and decided upon. And the decisions are highly important for almost all matters. Insulation, electronics, floorings...



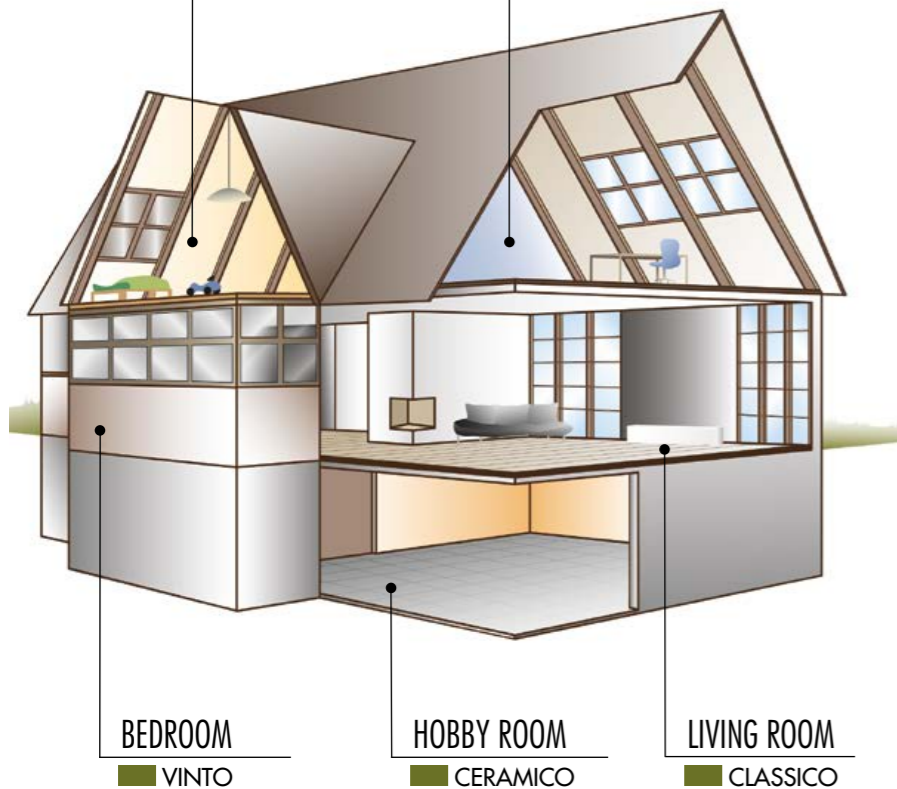
K002 | Decor: Oak Esperia | p. 35

CHILDREN'S ROOM

FAMILY
Wide range of decors,
at affordable prices

OFFICE

AMBIENTA
For rooms that see intensive use,
anti-static, footfall and impact
sound insulation



CONCEPT AND DESIGN

Everything should be perfect. And professional advice on flooring was a great help. Finally, the floors must be able to withstand a lot and as much as possible as well – so no corners are cut. The **LOGOCLIC** sales consultant will come and give advice on what can be done and what is needed. All the important and necessary information directly from the profile. The installation work, however, can be performed without professional help – thanks to the well thought-out Click System.

LOGOCLIC® **classico**

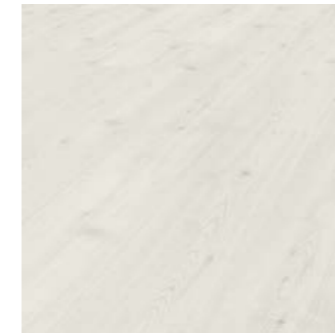
ROOMS FULL OF LIFE



It mainly is special things which you remember in life. Our laminate floorings are especially beautiful – guaranteed. The **LOGOCLIC** Classico product group not only uses its characteristics to do everything you can think of, but also gives your home a special touch. Even after long and intensive use, the abrasion-resistant surface of **LOGOCLIC** Classico ensures an unscratched, beautiful appearance.



8812 | Decor: Hickory Amalfi



5570 Milford, LD (NL)



K031 Oak Crado, LD (GT)



K274 Pine Palermo, LD (NL)



8812 Hickory Amalfi, LD (NL)

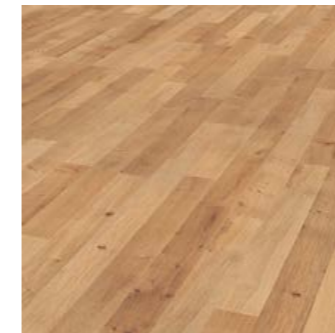


3967 Walnut Livorno, 2S (NL)

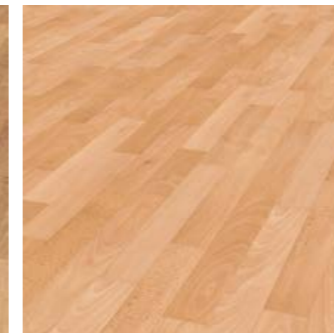


K002 Oak Esperia, LD (UW)

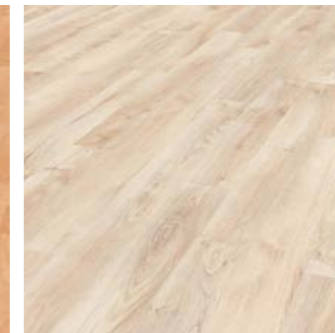
1285 x 192 x 8 mm
PACKAGE: 9 PANELS | CONTENT: 2,22 m²



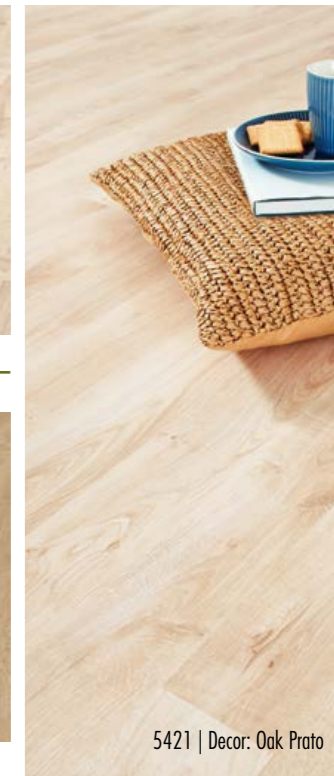
8843 Oak Trondheim, SB (SU)



9212 Beech Moldau, SB (GT)



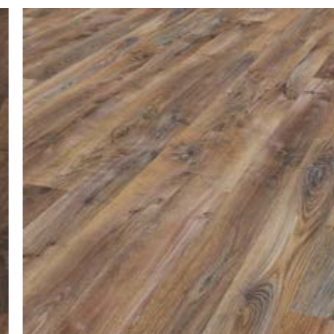
5421 Oak Prato, 2S (NL)



5421 | Decor: Oak Prato



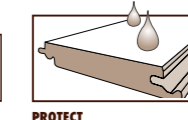
K067 Hickory Resina, LD (GT)



3970 Oak Acere, 2S (NL)



8279 Oak Piave, LD (RF)



“SHOW ME HOW YOU BUILD
AND I’LL TELL YOU WHO YOU ARE.”

Christian Morgenstern



WIDTH X LENGTH

- [1] 2000 x 192 mm longboard
- [2] 1285 x 192 mm standard size
- [3] 1285 x 242 mm plank look
- [4] 1285 x 327 mm XL format



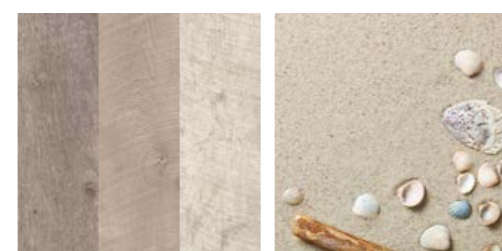
K037 | Decor: Barnwood Ravenna | p. 40

INNOVATION AND DIVERSITY

The **LOGOCLIC** Vinto product group stands out thanks to its unbelievable diversity – both for decors and sizes, but for surfaces as well – there is something here for every taste! Appearance is a highly important factor for choosing a floor, although it is closely followed by feel. A positive feeling of well-being can be immensely affected if a floor does not feel good. **LOGOCLIC** Vinto, with its ingenious surface properties, is right there, providing a natural and comfortable feeling for feet.

VISUAL PLAY

Both the direction and the width of the individual floor boards play an important role in the overall impression of a room. Perception can therefore be specifically influenced. Narrow planks laid parallel to short room walls visually improve the room’s size. Wider floor boards emit more calm and tastefulness. Individual style can be optimized in many different ways, depending on individual taste, room sizes and furnishing.



**ALWAYS SUITABLE FOR USE.
ANYWHERE. ANYTIME.**

People and their lifestyles differ – sometimes due to small differences and sometimes fundamentally. Each lifestyle can be creatively emphasised or specifically underscored. Colours and materials are decisive factors, which, combined with surfaces, structures and sizes, are important for a visual impression. Whereas light floors visually increase and open a room, darker decors are marvellously suited for tasteful, original ambiances. Floor board lengths and widths also play a vital role and have a decisive effect on how the room is perceived.



LOGOCLIC® vinto

IT'S YOUR CHOICE



Wooden floorboards give a room that certain something, but are not cheap to purchase. The **LOGOCLIC** Vinto 192/8 laminate floor is an inexpensive alternative to expensive genuine wooden floorboards. The 192 mm-wide panels and the surrounding V4 joints create an authentic wooden floorboard look. The **LOGOCLIC** Vinto laminate gives every room a spacious atmosphere.



8630 Oak Bastogne, LD (LP)



5529 Pine Pisa, LD (NL)

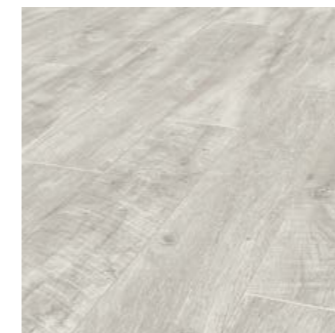


5529 | Decor: Pine Pisa

1285 x 192 x 8 mm
PACKAGE: 9 PANELS | CONTENT: 2,22 m²



5966 | Decor: Oak Sorrent



K060 Oak Vigo, LD (BW)



4295 Oak Virani, LD (UW)



5966 Oak Sorrent, LD (NL)



5540 Oak Monza, LD (HC)



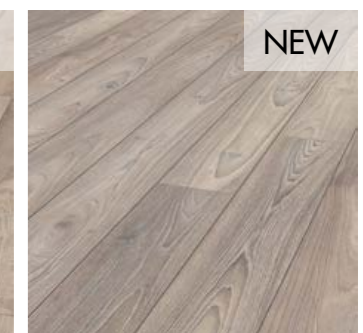
5544 Oak Serra, LD (NL)



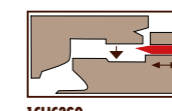
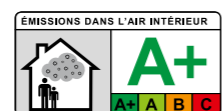
K268 Infinity Oak, LD (PO)



K283 Oak Triest, LD (NL)



5967 Oak Alba, LD (NL)



LOGOCLIC® vinto



LOGOCLIC Vinto floors confer all floors with a special charm. The elegant surface perfectly completes the high-quality structure and confers your floor with a natural touch that you can see and feel. **LOGOCLIC** Vinto Decors are equipped with 2-sided longitudinal joints or 4-sided V joints, which bestow your room with a glamorous appearance. A great result.



8837 Oak Milford, LD (SU)



K059 Oak Modico, LD (RF)



K037 Barnwood Ravenna, LD (BW)



K036 Barnwood Nuoro, LD (BW)



8274 Oak Bergamo, LD (RF)



8525 Roadsigns, LD (RF)



K262 Chalkboard Oak, LD (NL)



8632 Oak Jubilee, LD (LP)



K037 | Decor: Barnwood Ravenna



4276 Walnut Regusa, LD (UW)



K280 Oak Cordoba, LD (GT)



8631 Oak Assisi, LD (LP)



1285 x 192 x 8 mm
PACKAGE: 9 PANELS | CONTENT: 2,22 m²

The versatile **LOGOCLIC** Vinto decor floors allow for highly individual design options. They withstand high loads, are dirt-repellent and feature the special **LOGOCLIC** Protect moisture protection.



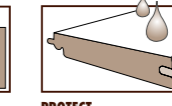
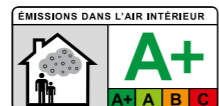
5543 Oak Piano, LD (HC)



5936 Oak Venetia, LD (UW)



5936 | Decor: Oak Venetia

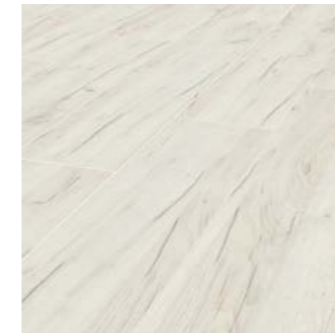




A FLOOR MADE FOR LIVING



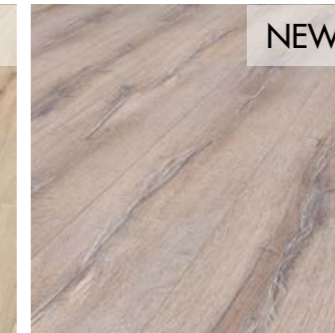
The **LOGOCLIC** Vinto 242 laminate plank lets you achieve an authentic plank look. The 242 mm-wide plank and the surrounding V4 joints make the floor look deceptively real. Just the right choice for changes!



K001 Oak Tarent, LD (NL)



K063 Oak Valenica, LD (NL)



5166 Oak Melfi, LD (NL)



K064 Oak Villamar, LD (NL)



K001 | Decor: Oak Tarent

1285 x 242 x 8 mm
 PACKAGE: 8 PANELS | CONTENT: 2,49 m²

With its special floor width of 242 mm and modern decor, **LOGOCLIC** Vinto makes contemporary living a stylish experience. The brushed surface with different lustre effects in the pores creates a natural feel and look.



5166 | Decor: Oak Melfi



LOGOCLIC® vinto



Give your floor a whole new look! The extra-wide **LOGOCLIC** Vinto 327 laminate floor ensures an authentic wooden plank look in your rooms. The 327 mm-wide panels and long V-joints give the impression of a real plank floor. The continuous decorative image from panel to panel provides variety and makes the laminate floor look even more realistic. Just the right choice for your rooms!

ROOM FOR BIG IDEAS – PLANKS IN XL



5165 Oak Arona, LD (NL)



8572 Oak Granada, LD (SU)



8572 | Decor: Oak Granada

1285 x 327 x 8 mm
PACKAGE: 6 PANELS | CONTENT: 2,52 m²

Innovative interior concepts can be realized easily with **LOGOCLIC** Vinto. For example, when using the 327 mm-width board. The ease of handling of these boards makes laying them child's play, and a perfect result is achieved in the blink of an eye. This floor simultaneously marks you out as having classic tastes but also being a trend-setter. With its authentic real wood look, it makes every room a dream flooring – whether modern or traditional.



8456 Oak Palazzo, LD (SU)



8456 | Decor: Oak Palazzo



LOGOCLIC® vinto

IN HARMONY WITH NATURE



With its 10 mm thickness, **LOGOCLIC** Vinto vintage style is not only bang on trend for lifestyle, but it also lends any home that special ambiance. It is the perfect basis for thrilling combinations of old and new. Selected decors achieve an authentic wooden flooring look with the appearance of being hand-crafted. This effect is enhanced by the surrounding micro-joint on all 4 sides.



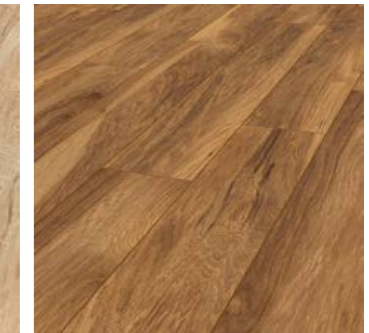
5953 Diamond Oak, LD (HO)



5536 Chestnut Velina, LD (RC)



5943 Hickory Casale, LD (VH)



8155 Marsala, LD (VH)

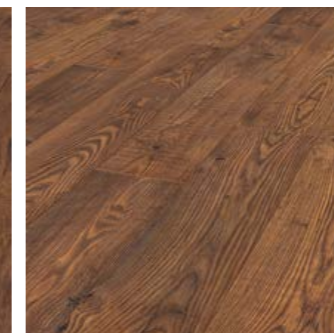


8156 | Decor: Hickory Donada

1285 x 192 x 10 mm
PACKAGE: 7 PANELS | CONTENT: 1,73 m²



8156 Hickory Donada, LD (VH)



5539 Chestnut Toro, LD (RC)



8157 Hickory Narava, LD (VH)



5535 Chestnut Alba, LD (RC)



5539 | Decor: Chestnut Toro





SPACES THAT SEEM TO GO ON AND ON



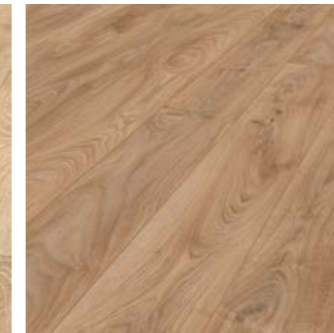
LOGOCLIC long floor boards confer living environments with new attributes. They expand rooms and give off a lavish ambience. The feeling of an endlessly long floor board is conveyed in the laid surface with the help of their 2 meter laminate panels.



5540 | Decor: Oak Monza



5540 Oak Monza, LD (NL)



5947 Everlasting Oak, LD (HO)

2000 x 192 x 10 mm
PACKAGE: 5 PANELS | CONTENT: 1,92 m²



5953 Diamond Oak, LD (HO)



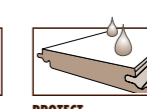
5543 Oak Piano, LD (NL)



5954 Skyscraper Oak, LD (HO)



8096 Oak Fondi, LD (NL)





“LOVE IS THE MOST BEAUTIFUL STONE IN THE MOSAIC OF LIFE.”

Rainer Kaune

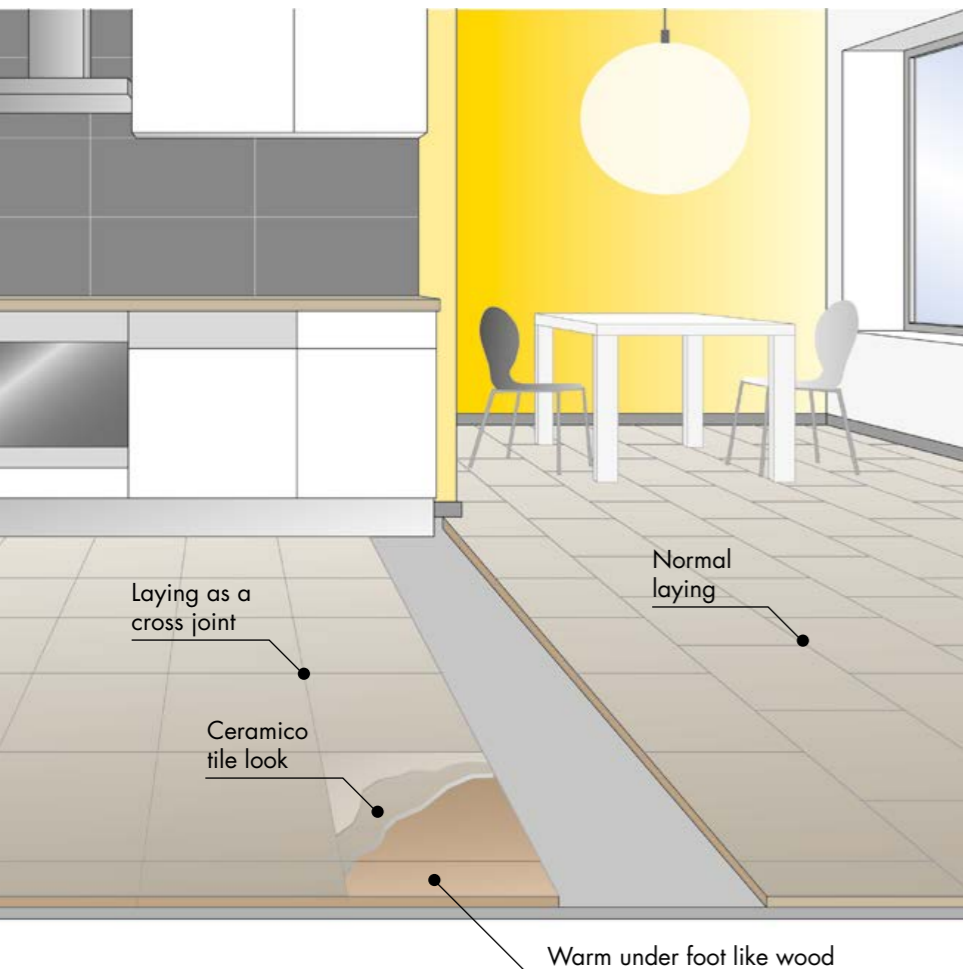


AUTHENTIC TILE LOOK

Outdoors in wind and weather – Proper equipment here is indispensable. And the floor should not create any bad moods upon returning. Quickly clean, sweep or wipe and soon nothing else will remind you of the exciting trip. Life outdoors and indoors must be able to be harmonised without having to make great trade-offs. This is why tiles have clear advantages compared to sensitive wood. But it is clearly too cold for playing. And what effort when a tile breaks to pieces. But the appearance is simply wonderful and it is simple as well. And now the laminate floor comes into play here – with a tile look!



8393 | Decor: Slate Plata | p. 55



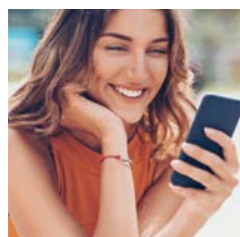
WARM UNDER FOOT – WELLNESS

LOGOCLIC Ceramico is the answer to the question of tile or wood! It's not a difficult choice – All advantages of each floor type have finally converged here. This floor is insensitive, simple, robust and warm under foot. And kids will no longer have chattering teeth when playing on the floor. Wood on the inside, a stone look on the outside – Simply an ideal combination for sophisticated living.



LOGOCLIC® CERAMICO

BAREFOOT FEELS GOOD



Uncomplicated, durable, natural – these are the benefits of tiles. **LOGOCLIC** Ceramico combines these benefits with additional advantages: a wonderfully warm walking surface and a visible joint.



9520 Slate Cardedeu, S (SP)



9514 Slate Anthracite, S (SP)



9514 | Decor: Slate Anthracite

1276 x 327 x 8 mm
PACKAGE: 6 PANELS | CONTENT: 2,50 m²

Authentic tile decors bring together all demands for modern and contemporary floor coverings. XL Tile decors not only ensure a stylish and elegant living ambience, but also captivate mainly due to the harmonious tile look, which looks deceptively similar to the original. This laminate has a surface structure characteristic of a stone. The high-quality printing technique makes you feel as if you were really walking on a stone floor.



9520 | Decor: Slate Cardedeu



LOGOCLIC® **ceramico**

REALLY WELL DONE



LOGOCLIC Ceramico offers a realistic tile look. The surface structure, with its stone characteristics, represents a detailed reproduction, which is also effective on large surfaces. Many refined colourings and decors with a stone-like appearance allow for individual living quarter arrangements. **LOGOCLIC** Ceramico can be quickly and cleanly laid thanks to the XL format and the 1 clic2go System.



8282 | Decor: Cremona



8282 Cremona, F (RS)



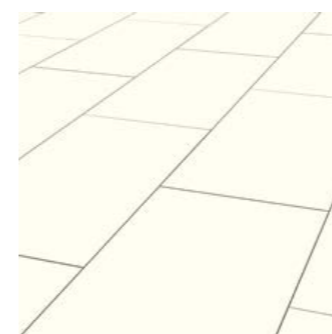
K035 Carrara, S (AS)



Authentic stone effect

8475 | Decor: Torino

1285 x 327 x 8 mm
PACKAGE: 6 PANELS | CONTENT: 2,52 m²



0101 Bianco, F (SU)



8457 Avola, F (AS)



8393 Slate Plata, F (RS)



8237 Slate Nardo, F (RS)



8475 Torino, F (AS)



K060 Oak Vigo, LD (BW)



NEW

K049 Oak Padua, FG (SU)



NEW

K048 Oak Catania, FG (SU)



“DESIGN IS THE ART THAT MAKES ITSELF USEFUL.”

Schach&Matt

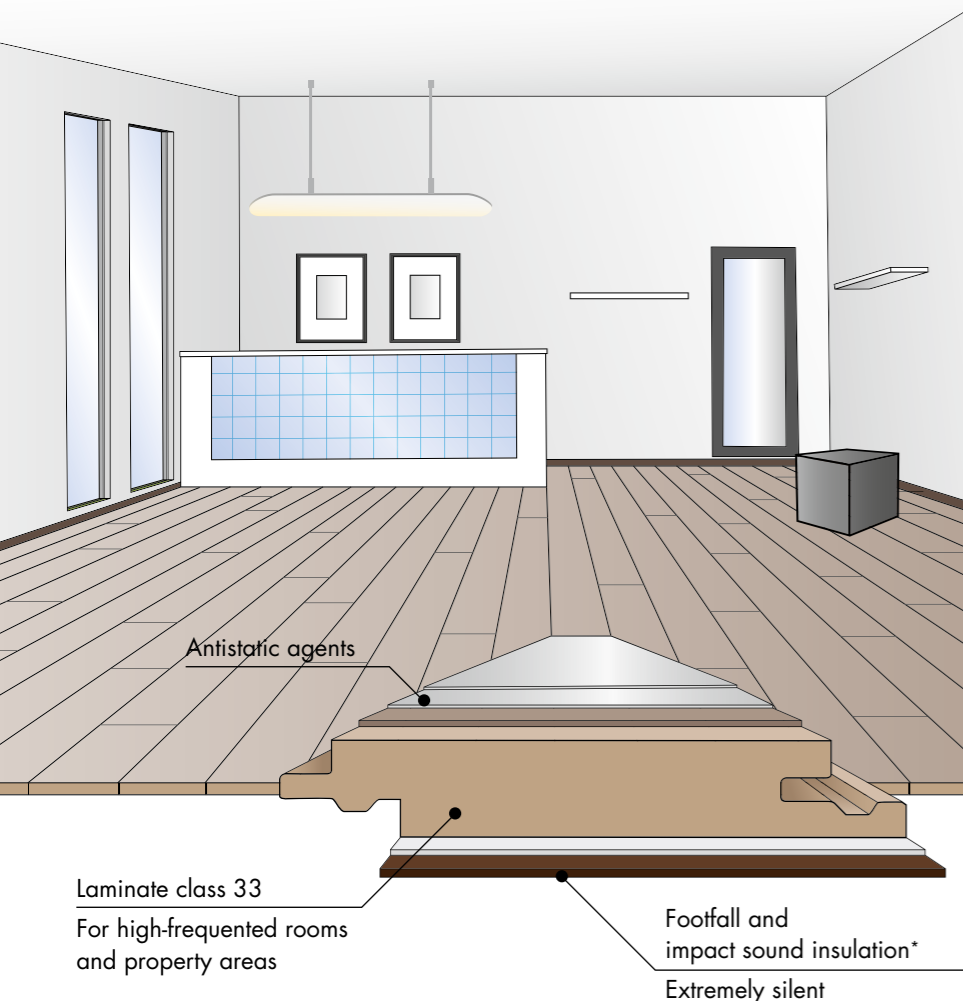


SPECIAL USE – SPECIAL FLOOR

High standards, great expectations – of art, quality and taste. The high-end **LOGOCLIC** Ambienta floor is just the right foundation for completing all these factors. Here you can fulfil all demands in one go: Robustness, simplicity, beauty, classiness, individuality... It simply doesn't get better than that. If only it were easier to make a choice – with all these ravishing decors...



5967 | Decor: Oak Alba | p. 59



PROFESSIONAL INSTALLATION SERVICE

Taking on your own project and creating something wholly your own – it's a fantastic adventure. It's incredible how much planning and organization needs to go into it. Nothing can be forgotten, nothing can go wrong, and nothing can be left to chance. That's where competent assistance is enormously helpful. So it's great to know you can rely on the **LOGOCLIC** installation service. From on-site advice to timely and expert laying by professionals – a really neat way of going about things. And it comes for an all-in price.

LOGOCLIC® ambienta

IN A CLASS OF ITS OWN



Personal style and first-class materials are increasingly in demand. We create ourselves living spaces full of atmospheric passion for details. **LOGOCLIC** Ambienta is one of our high-end laminate floors. Innovative technologies such as walking and impact sound insulation make this floor very quiet and create a highly exclusive walking feel together with a pleasant sound.



8630 Oak Bastogne, LD (LP)

8461 Oak Noville, LD (RF)

5529 Pine Pisa, LD (NL)

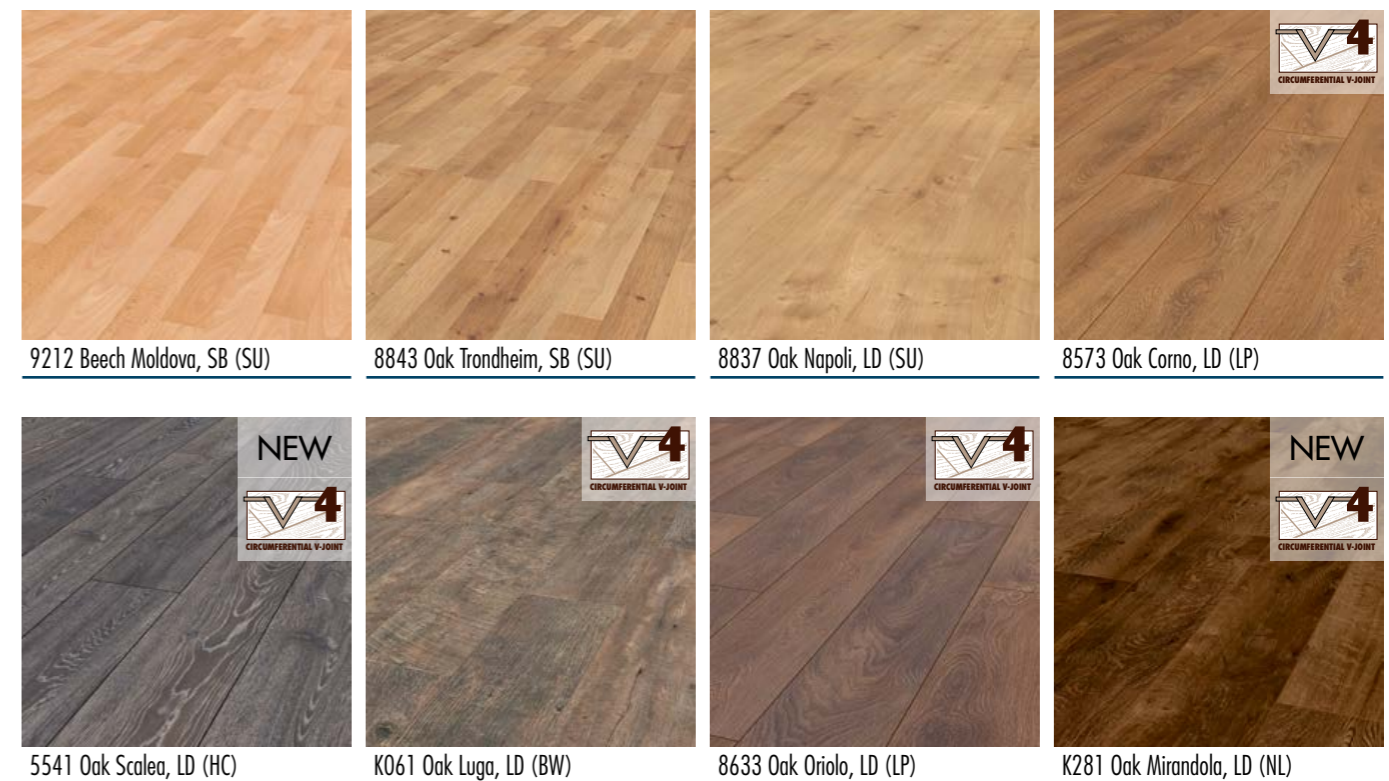
5967 Oak Alba, LD (NL)



8461 | Decor: Oak Noville

1285 x 192 x 8+2 mm
PACKAGE: 7 PANELS | CONTENT: 1,73 m²

The **LOGOCLIC** Ambienta premium laminate wins you over with its numerous functional extras. The anti-static system ensures that the floor will generate virtually no "shocks." In addition, this high-tech laminate features a high degree of slip resistance, which additionally increases walking comfort.



9212 Beech Moldova, SB (SU)

8843 Oak Trondheim, SB (SU)

8837 Oak Napoli, LD (SU)

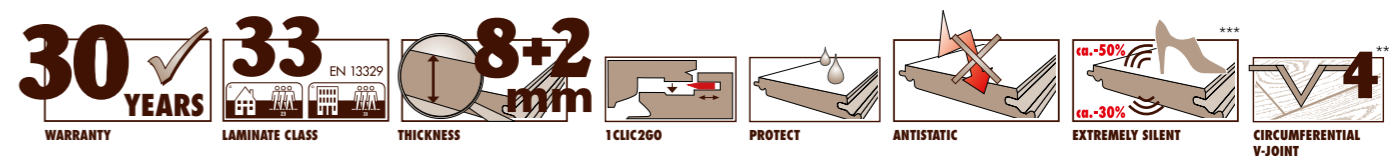
8573 Oak Corno, LD (LP)

5541 Oak Scalea, LD (HC)

K061 Oak Luga, LD (BW)

8633 Oak Oriolo, LD (LP)

K281 Oak Mirandola, LD (NL)



Available for selected decor floors. * The reduction in footfall and walking sound level is dependent on the subsoil structure.

LOGOCLIC® element

THE NEW **HARD VINYL FLOOR**

1280 x 192 | 295* x 4 mm

- Water resistant
- Special surface feel and look
- An almost-perfect plank look through circumferential V-joint (wood decor floors)
- Non-slip (anti-slip class 9)
- Highest indoor air quality A+**
- Antibacterial surface***
- Heavy duty, suitable for commercial use
- An almost-perfect tile appearance due to circulating U-joint (stone decor floors)
- High scratch and abrasion resistance
- Low construction height
- 30-year warranty for residential and 5 years for commercial



R033 | Decor: Oceanbay | p. 63



R018 | Decor: Raindrop | p. 63



Water resistant

Scratch resistant

Wear resistant

VERSATILITY HAS A NAME

LOGOCLIC ELEMENT is a truly versatile flooring – from the nursery to commercial use. But even in damp rooms such as kitchens and bathrooms, **LOGOCLIC** is a reliable and attractive partner due to its water resistance, anti-slip class 9 and antibacterial surface. A versatile, quiet and warm floor covering that also shines with many other attractive features. The 34 use class makes it resilient, is dust and dirt repellent, and has high scratch and abrasion resistance.

A QUESTION OF PRINCIPLE

LOGOCLIC ELEMENT also rates highly in terms of health and walking comfort, which its VOC A+ rating in the best emission class according to the emission scale indicates.

No wonder, then, that you receive a 30-year warranty on all **LOGOCLIC** ELEMENT floors for residential purposes and 5 years for commercial usage. Due to the low installation height of 4 mm, the shortening of doors is usually not or only slightly necessary. Top quality and very uncomplicated!

LOGOCLIC ELEMENT is laid using the Top Clic installation system.



R015 | Decor: Blue Horizon | p. 63

LOGOCLIC® element



Years of development have paid off with **LOGOCLIC** ELEMENT: we offer you a real high-tech product – more scratch-resistant and more robust than other floors and, of course, waterproof. **LOGOCLIC** ELEMENT represents a new generation in vinyl flooring, which impressively combines the advantages of synthetics with the aesthetics of parquet. It scores with its stability and the highest utilization class 34 (DIN EN 16511). **LOGOCLIC** ELEMENT is therefore suitable for commercial premises as well as bathrooms, kitchens and corridors.



IT'S FEATURES GREAT WITH ALL KINDS OF USAGES



R054 Cliffline, LD (HS)



R053 Sea Star, LD (HS)

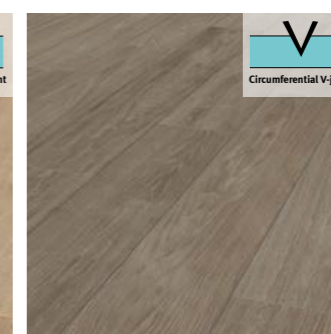
1280 x 192 x 4 mm
PACKAGE: 11 PANELS | CONTENT: 2,70 m²



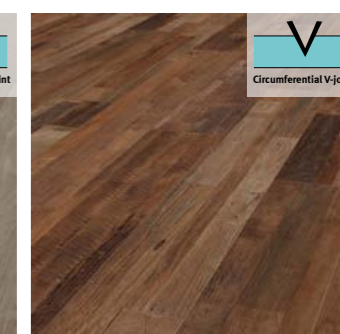
R018 Raindrop, LD (FN)



R026 Waterfall, LD (FN)



R015 Blue Horizon, LD (FN)



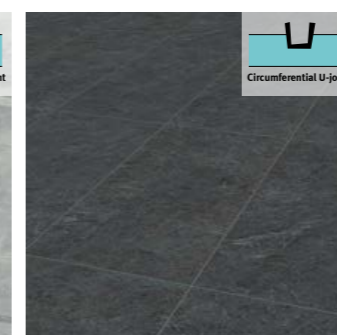
R037 Freshbreeze, MS (HS)



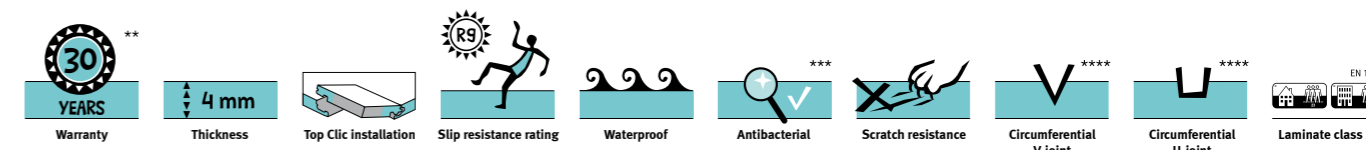
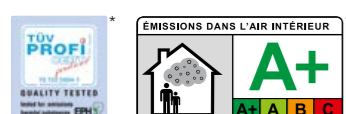
1280 x 295 x 4 mm
PACKAGE: 9 PANELS | CONTENT: 3,40 m²



R051 Pebble Stone, F (HR)



R033 Oceanbay, F (HR)



** In the living area. Detailed warranty conditions: www.logoclic.info *** Tested bacterial strains: Staphylococcus aureus and Escherichia coli. **** Available for selected decor floors.



Classic baseboards



Trend baseboards



Plastic skirting strips

DELIBERATE ACCENTS

Sophisticated floor design is just as unique as the room, which reflects the personality of its owner through its style. In order to specifically emphasize the main points, LOGOCLIC has obtained highly-expressive options for room design independent from floor decor. The goal is to add a room design option, which is independent from the decor, at the border between the wall and floor. Depending on the decor and taste, the skirting product line encompasses many different materials of different sizes and thicknesses.



5421 | Decor: Oak Prado | p. 35



THE PERFECT BORDER

Junction and adjustment profiles ensure harmonious and flexible junctions between different floors irrespective of the floor covering. Required expansion joints are decoratively overlaid, thereby creating a flowing and visually-appealing overall floor design.

Unique design options are made possible thanks to a large selection of profile sizes and shapes. Hems and height differences

can be overlaid in a discrete and therefore flowing manner.

End profiles help create clean borders at the end of a floor design. It can be used in many different places and offers solutions for parquet flooring and laminate, thresholds and tiles, steps, tiles and door-frames.



Transition profiles



Adapted profiles



Finishing profiles

ACCESSORIES

In addition to a wide range of floors and skirtings, LOGOCLIC offers a wide range of maintenance and laying accessories. Whether it's repair material suitable for the decor or pipe collars, LOGOCLIC, as a quality floor brand, has the right accessory for all situations.



Exclusively in your **BAUHAUS**



Layout tool



Mounting clips



Pipe collars



INSULATION – PRODUCTS AND PROPERTIES AT A GLANCE

- LOGOCLIC Premium
- PROFESSIONAL AQUASTOP
- PRO ACOUSTIC+
- EXPERT AQUASTOP

- LOGOCLIC Standard
- ECO CORK
- MAXIMA AQUASTOP SMART
- EXTRA AQUASTOP SMART
- ECO WOOD

- LOGOCLIC Basic
- THERMO AQUASTOP
- XPS MAXIMA
- XPS EASY
- XPS ALLROUND
- XPS LIGHT

Thickness in mm	Walking sound	Footfall sound	Compressive strength	Thermal insulation	Underfloor heating	Moisture protection
1.5	★★★★☆	★★☆☆☆	★★★★☆	-	★★★★★	★★★★★
2.0	★★★★☆	★★☆☆☆	★★★★☆	-	★★★★★	★★★★★
2.0	★★★★☆	★★☆☆☆	★★☆☆☆	-	★★★★☆	★★★★★
2.0	★★☆☆☆	★★☆☆☆	★★☆☆☆	-	★★☆☆☆	-
5.0	★★★★☆	★★★★☆	★★☆☆☆	★★★★★	-	★★★★★
3.0	★★☆☆☆	★★☆☆☆	★★☆☆☆	★★☆☆☆	-	★★★★★
5.0	-	★★☆☆☆	★★☆☆☆	★★☆☆☆	-	-
1.6	★★★★☆	★★☆☆☆	★★☆☆☆	-	★★☆☆☆	★★★★★
5.0	★★☆☆☆	★★★★★	★★☆☆☆	★★★★★	-	-
2.2	★★☆☆☆	★★★★☆	★★☆☆☆	-	★★☆☆☆	-
2.2	★★☆☆☆	★★★★☆	★★☆☆☆	-	★★☆☆☆	-
1.6	★★★★☆	★★☆☆☆	★★☆☆☆	-	★★☆☆☆	-

★★★★★ excellent ★★★★☆ very good ★★★☆☆ good ★★☆☆☆ good enough ★☆☆☆☆ limited



Insulation: Eco Cork



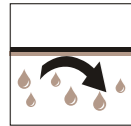
SOUND REDUCTION

"Walking noise" refers to the sounds that are heard within the room. The unpleasant "clack-click effect" can be greatly reduced by choosing the right products; depending on the material, the noise made from walking in the room can be reduced by up to 26%.



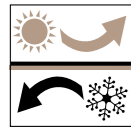
IMPACT SOUND REDUCTION

"Impact sound" describes the sounds that are perceived in lower or adjacent rooms. Depending on the material design of the base, these can be minimized up to 22 dB (A).



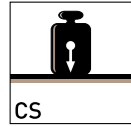
MOISTURE PROTECTION

For mineral substrates, top floor manufacturers prescribe the installation of a vapor barrier (LOGOCLIC PE 200). With LOGOCLIC products with a built-in vapor barrier, you can do without the foil. The so-called Sd value should be over 75 m.



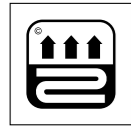
THERMAL INSULATION

In times of resource conservation, thermal insulation is a crucial requirement. In addition, the comfort of an unheated yet warm floor (through optimal insulation) is an important factor.



COMPRESSIVE STRENGTH

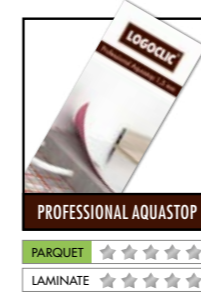
Sufficient compressive strength in the pad is very important, especially when installing Click laminate flooring. Depending on the price category, LOGOCLIC products offer extremely high robustness. The top product is 250 kPa, which is also absolutely sufficient for much-frequented rooms.



UNDERFLOOR HEATING

(Hot water) In this application, the surface's heat permeability is crucial. The so-called thermal resistance should not exceed a 0.15 m²K/W value throughout the entire structure (i.e. underlay + top floor surface). When in doubt, always ask for the thermal resistance of the top floor surface; the two values are simply added. Perfect thermal conductivity ensures pleasant and efficient heating of your rooms. Our top product, "Professional Aquastop" shines with a thermal resistance of only 0.009 m² K/W, which is practically "0."

TOP Product: Alternative Product:

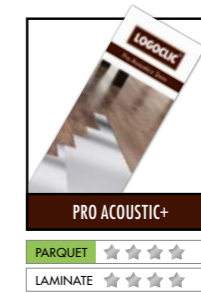


Polyurethane acoustic underlay, 1.5 mm thick, for floating laminate, cork and parquet flooring. Recommended accessories: Aluminium adhesive tape. Extreme suitable for underfloor heating.

Strength: 1.5 mm

Dimension: 1 x 8 m = 8 m²

20%	14 dB	0.009 m ² K/W	-	280 kPa
★★★★☆	★★☆☆☆	★★★★★	☆☆☆☆☆	★★★★☆

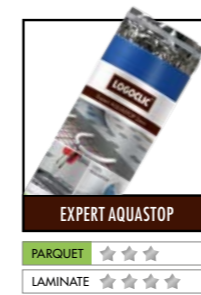


A 2 mm polyurethane acoustic underlay for floating laminate, cork and parquet floors. Recommended accessories: aluminum adhesive tape. Very suitable for underfloor heating.

Strength: 2 mm

Dimension: 1 x 5 m = 5 m²

26%	18 dB	0.01 m ² K/W	-	250 kPa
★★★★☆	★★☆☆☆	★★★★★	☆☆☆☆☆	★★★★☆



Good underlay for using on top of floor heating due to its very low heat-resistance value. Improves acoustic comfort and thus causes a high degree of footfall soundproofing. For premises with medium foot traffic due to its solid compressive tension. 3 in 1 = underlay with integrated Aquastop vapor barrier and self-adhesive edge.

Strength: 2 mm

Dimension: 1 x 10 m = 10 m²

20%	19 dB	0.038 m ² K/W	-	60 kPa
★★★★☆	★★☆☆☆	★★★★☆	☆☆☆☆☆	★★☆☆☆




Natural 2 mm insulation underlay for floating laid laminate, cork and parquet floors. Recommended accessories: PE moisture stop and aluminum adhesive tape. Good for underfloor heating.

Strength: 2 mm

Dimension: 1 x 10 m = 10 m²

5%	18 dB	0.044 m ² K/W	-	60 kPa
★★☆☆☆	★★☆☆☆	★★★★☆	☆☆☆☆☆	★★☆☆☆

LOGOCLIC®




MAXIMA AQUASTOP SMART

The pad isolates the floor from the cold especially well due to its very high thermal resistance value. It smooths out bumps up to 4.0 mm very well. The high impact sound insulation improves the acoustic comfort. 3 in 1 = underlay with integrated Aquastop vapor barrier and self-adhesive edge.

Strength: 5 mm Dimension: 1.18 x 4.7 m = 5.5 m²

PARQUET	RWS	IS	CS
☆☆☆☆☆	10%	20 dB	90 kPa
LAMINATE	☆☆☆☆☆	☆☆☆☆☆	☆☆☆☆☆




EXTRA AQUASTOP SMART

Improves the acoustic comfort through its high impact sound insulation. Due to the good compressive stress suitable for medium traffic. 3 in 1 = underlay with integrated Aquastop vapor barrier and self-adhesive edge.

Strength: 3 mm Dimension: 1.18 x 8.5 m = 10 m²

PARQUET	RWS	IS	CS
☆☆☆☆☆	11%	19 dB	90 kPa
LAMINATE	☆☆☆☆☆	☆☆☆☆☆	☆☆☆☆☆




ECO WOOD

A natural 5 mm insulation underlay for floating laid laminate, cork and parquet floors. Recommended accessories: PE moisture brake and aluminum adhesive tape. Not suitable for underfloor heating.

Strength: 5 mm Dimension: 0.59 x 0.79 m = 7 m²

PARQUET	RWS	IS	CS
☆☆☆☆☆	-	19 dB	> 150 kPa
LAMINATE	☆☆☆☆☆	☆☆☆☆☆	☆☆☆☆☆




THERMO AQUASTOP

XPS-underlay 1.6 mm for laminate, cork and parquet floor laid using the floating method. No additional equipment necessary. Perfectly suited for underfloor heating.

Strength: 1.6 mm Dimension: 1.18 x 5.1 m = 6 m²

PARQUET	RWS	IS	CS
☆☆☆☆☆	14%	18 dB	90 kPa
LAMINATE	☆☆☆☆☆	☆☆☆☆☆	☆☆☆☆☆




XPS MAXIMA

XPS insulation panel 5 mm for floating laminate, cork and parquet floors. Recommended accessories: PE moisture brake and Aluminum tape. Not suitable for underfloor heating.

Strength: 5 mm Dimension: 0.59 x 0.79 m; 15 boards = 7 m²

PARQUET	RWS	IS	CS
☆☆☆☆☆	9%	22 dB	90 kPa
LAMINATE	☆☆☆☆☆	☆☆☆☆☆	☆☆☆☆☆




XPS EASY

Easy to install XPS insulation underlay. Handy folding plate format, ideal dimensions. Recommended accessories: PE moisture brake and aluminum adhesive tape.

Strength: 2.2 mm Dimension: 1.2 x 12.55 m = 15 m²

PARQUET	RWS	IS	CS
☆☆☆☆☆	11%	20 dB	90 kPa
LAMINATE	☆☆☆☆☆	☆☆☆☆☆	☆☆☆☆☆




XPS ALLROUND

Acoustic underlay 2.2 mm for floating laid laminate, cork and parquet floors. Recommended accessories: PE moisture brake and aluminum adhesive tape.

Strength: 2.2 mm Dimension: 15 x 1.1 m = 16.5 m²

PARQUET	RWS	IS	CS
☆☆☆☆☆	11%	20 dB	90 kPa
LAMINATE	☆☆☆☆☆	☆☆☆☆☆	☆☆☆☆☆




XPS LIGHT

Recommended for use above ground heating. Suitable for premises with medium traffic due to good compressive stress. Recommended accessories: PE moisture brake and aluminum adhesive tape.

Strength: 1.6 mm Dimension: 1.1 x 18.2 m = 20 m²

PARQUET	RWS	IS	CS
☆☆☆☆☆	14%	18 dB	90 kPa
LAMINATE	☆☆☆☆☆	☆☆☆☆☆	☆☆☆☆☆




AQUAPROTEC

Absolutely necessary on mineral substrates to meet the warranty requirements, a vapor barrier SD > 150. Recommended accessories: aluminum adhesive tape.

Strength: 0.18 mm Dimension: 10 x 1 m = 10 m²

PARQUET	IS
☆☆☆☆☆	SD = 150 m
LAMINATE	☆☆☆☆☆
VINYL	☆☆☆☆☆

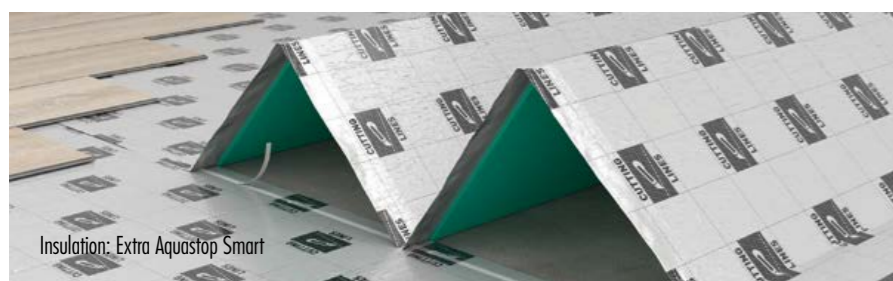



PE FOIL

Easy-to-lay polyethylene film. To protect laminate flooring, prefabricated parquet and cork flooring from rising damp when laying on mineral substrates. Suitable for underfloor heating. Mandatory when laying on mineral substrates.

Strength: 0.20 mm Dimension: 7.5 x 2 m = 15 m²

PARQUET	IS
☆☆☆☆☆	SD = 100 m
LAMINATE	☆☆☆☆☆
VINYL	☆☆☆☆☆

ALU STRIP

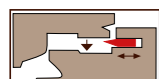
Aluminum-coated BOPP adhesive tape for vapor-tight bonding of PE film or insulation underlay.

Strength: 48 µm
Dimension: 50 mm x 50 m

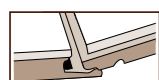
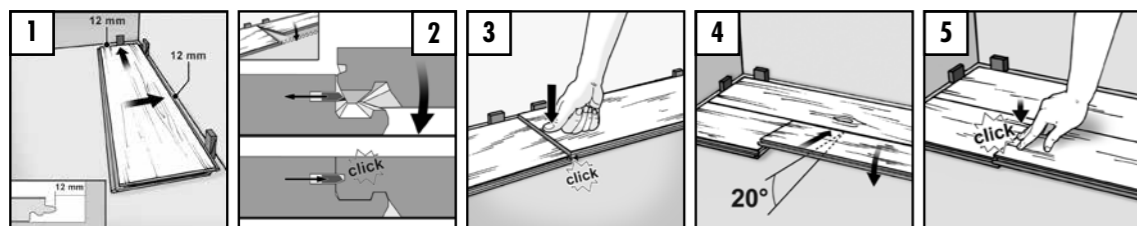


Explanation of the material bases: XPS = extruded polystyrene foam | EPS = expanded polystyrene foam
Wood fiber = wood soft fibers + binder | Cork = natural cork + binder | PE = polyethylene foam

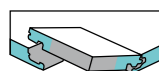
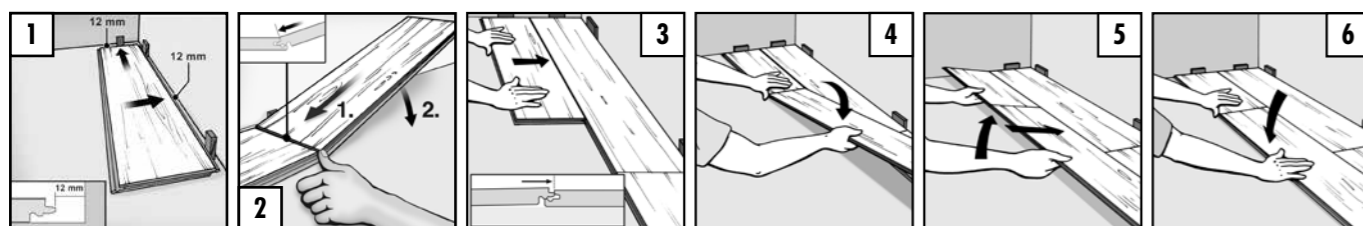




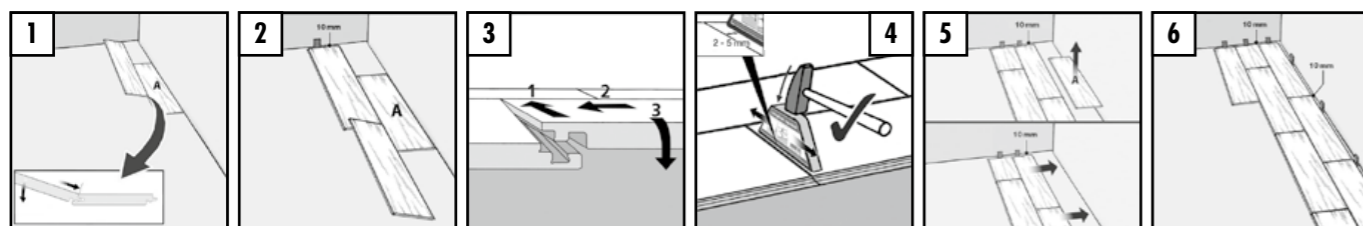
1CLIC2GO



CLIC SYSTEM



TOP CLIC INSTALLATION

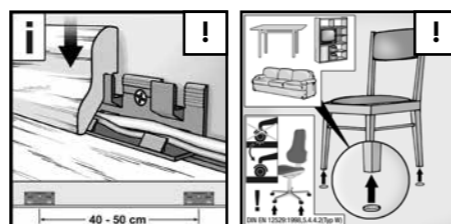


DETAILED INSTALLATION INSTRUCTIONS

You can find the detailed installation instructions in every LOGOCLIC packaging on the back of the inlay card or get more information under www.laminat-installation.com

USE THE CERTIFIED LOGOCLIC-INSTALLATION SERVICE

Ask our friendly BAUHAUS-staff.



As a finish, attach skirting boards.

Use felt pads under furniture legs. Make sure that soft casters are used, e.g. under office chairs.



YOUR OPINION IS IMPORTANT TO US!

www.facebook.com/logoclic

Our goal is to meet your expectations of our products. To ensure that we can do this, even in the long term, we highly value your opinion. We use your satisfaction as our benchmark! Therefore, we would like to ask you to take part in our product survey on Facebook and on www.logoclic.info. LOGOCLIC Product entries are rewarded with a small thank you after sending a LOGOCLIC proof of purchase.

1. Which product have you purchased? _____
2. Were you happy with the laying, including the instructions? yes no
3. Would you recommend LOGOCLIC? yes no
4. How did you find out about LOGOCLIC? Internet BAUHAUS-Specialised Center friends Others

Please send us your completed form with your name, address, e-mail address and telephone number at:
LOGOCLIC, Postfach 10 00 48, D - 01552 Großenhain

DETERMINING QUANTITY

The material requirement is determined by carefully measuring the room size. In general, 5 – 10% waste must be calculated. This also applies to the need for end strips, which is determined by the sum of the wall lengths. The smaller and more crooked spaces are, the more waste is generated.



5166 | Decor: Oak Melfi | p. 43



K001 | Decor: Oak Tarent | p. 43



www.logoclic.info



The product information in this catalog is up-to-date at the time of printing. Because of our continuous Product Development Policy, we reserve the right to change product specifications. For technical reasons, the original decor floors may differ from the illustrations in this catalog. 08/18/01



Company and address at: www.bauhaus.info/fachcentren or by phone 0800/3905000 (no charge).

www.bauhaus.info