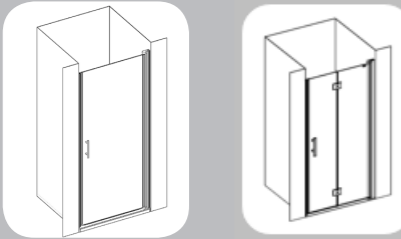
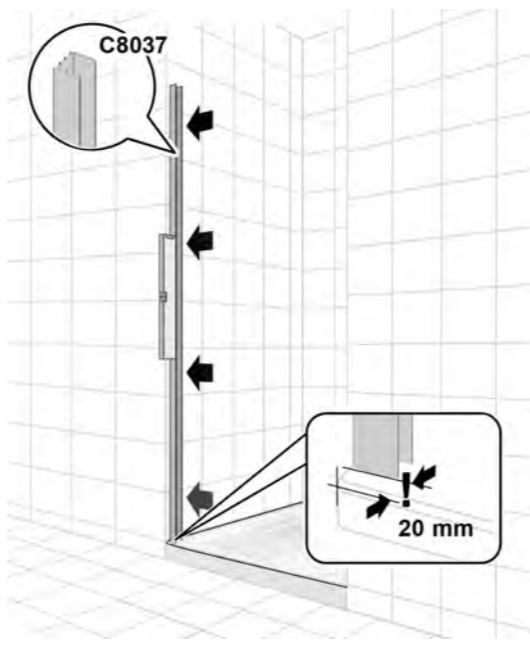


+ S9 / W9 / B9

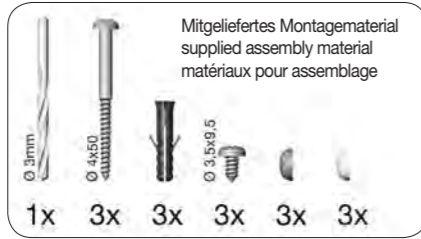


C8037
C8036
C8627

6

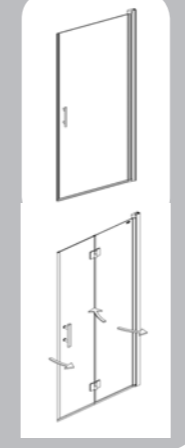


Modell	Nischenmaß Niche measure Mesure de niches (mm)
S1 / W1 / B1	735 - 765
S2 / W2 / B2 / S52 / B52	785 - 815
S3 / W3 / B3 / S53 / B53	885 - 915
S4 / W4 / B4 / S54 / B54	985 - 1015



Camargue®
VARIO

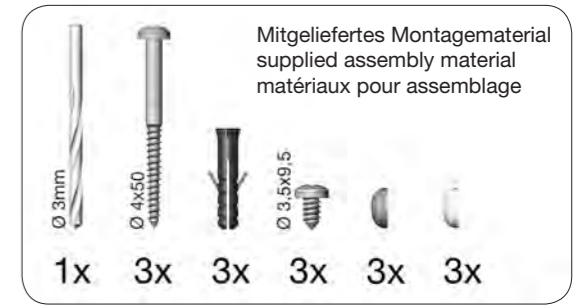
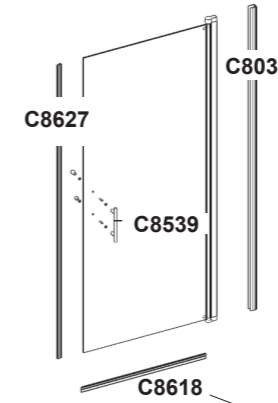
S1 / W1 / B1
S2 / W2 / B2
S3 / W3 / B3
S4 / W4 / B4



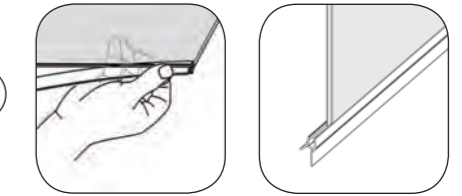
KL 01/2020

S52/B52
S53/B53
S54/B54

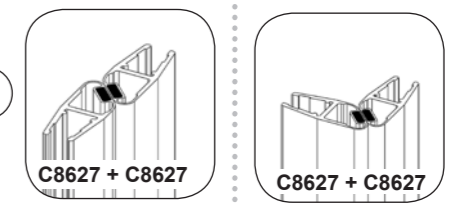
Montageanleitung für Rechtsanschlag
(Linksanschlag = spiegelbildlich)
Assembly instructions for right hand mounting
(left hand mounting = mirror inverted)
instruction d'assemblage pour charnière à droite
(à gauche = inversé lateralement)



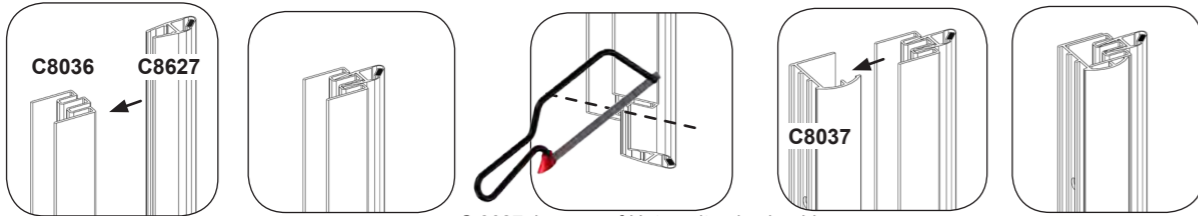
1



2

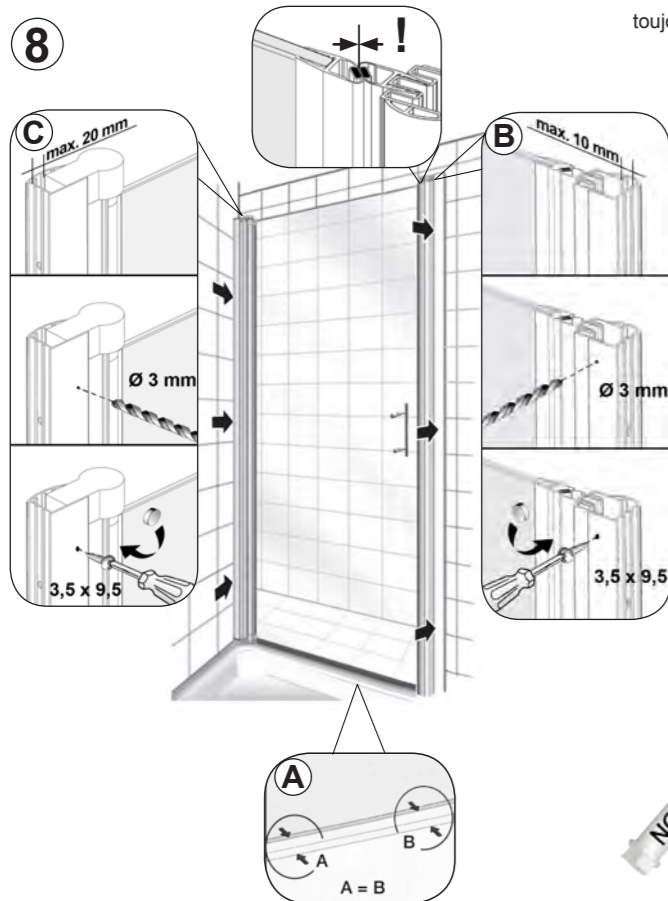


7

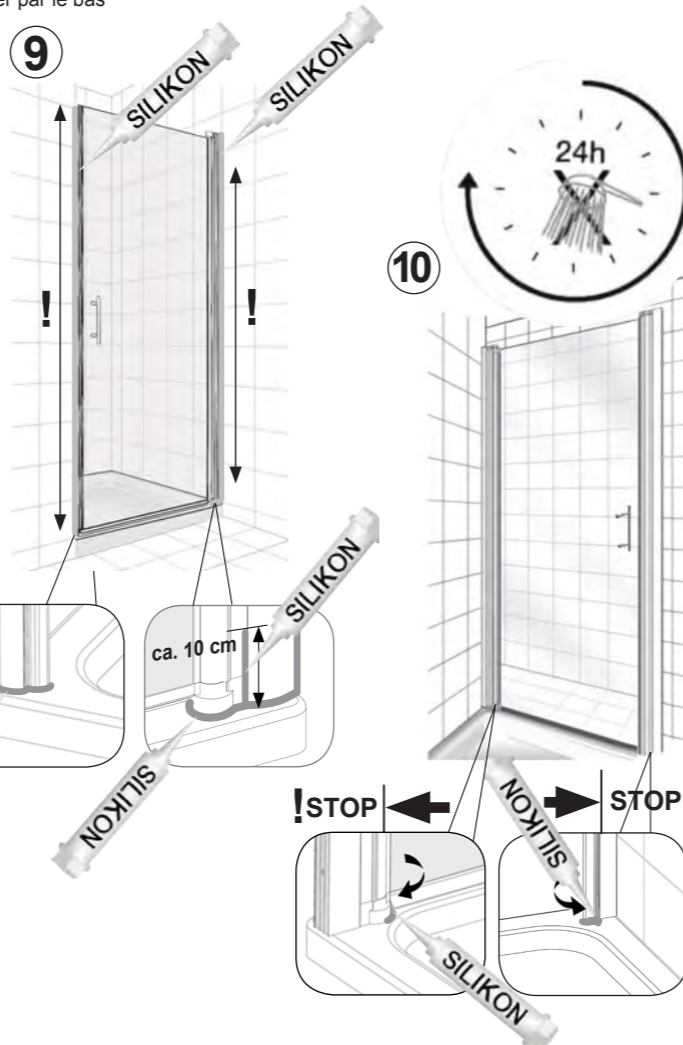


C 8627: immer auf Unterseite abschneiden
always cut from the bottom
toujours couper par le bas

8



9



10

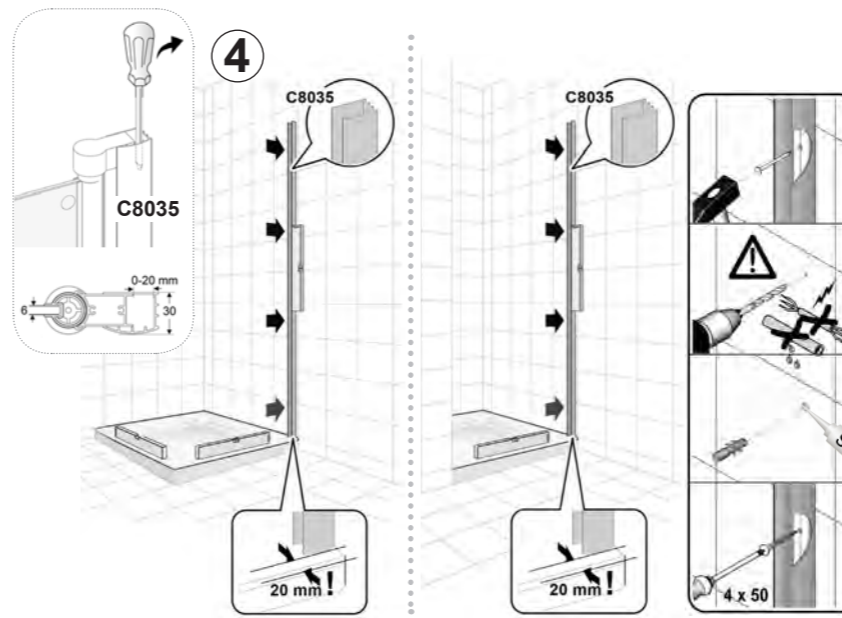


3

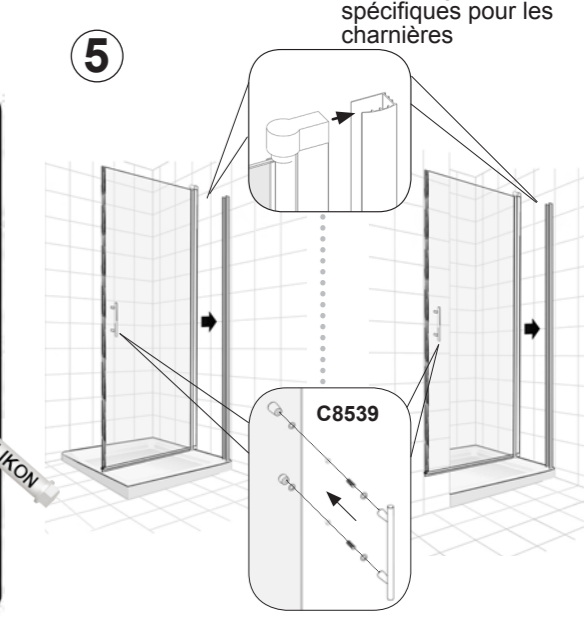


C 8627: immer auf Unterseite abschneiden
always cut from the bottom
toujours couper par le bas

4



5



Achtung! Gläser niemals ungeschützt auf den Boden stellen.
Verletzung der Glaskante führt zu Glasbruch.
Caution! Never put glass walls on the floor without protection.
Damaging the glass edges results in breaking of the glass.
Attention! Jamais placer des parois de douche en verre au sol sans protection. Des verres endommagés casseront.

Mitgeliefertes Montagematerial
supplied assembly material
matériaux pour assemblage

S52/B52 / S53/B53 / S54/B54

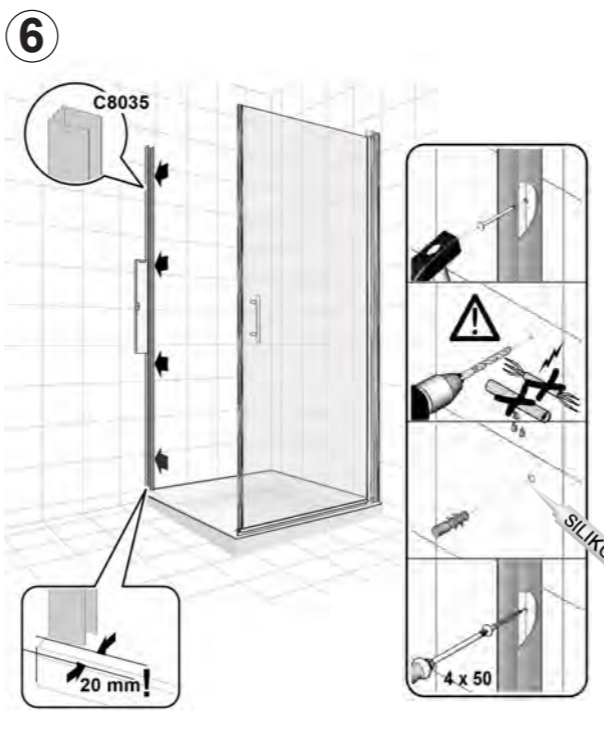
! siehe separate Montageanleitung für Scharniere
see separate instructions for mounting of hinges
voir les instructions de montage spécifiques pour les charnières

- S1 / W1 / B1
 - S2 / W2 / B2
 - S3 / W3 / B3
 - S4 / W4 / B4
- + S52/B52 / S53/B53 / S54/B54

Modell	Duschassen-Einbaumaß Shower tray installation dimensions Dimensions de montage de douche (mm)	Bodengleicher Aufbau Ground level installation Pose au sol dt (mm)
S1 / W1 / B1	735 - 755	695 - 715
S2 / W2 / B2 / S52/B52	785 - 805	745 - 765
S3 / W3 / B3 / S53/B53	885 - 905	845 - 865
S4 / W4 / B4 / S54/B54	985 - 1005	945 - 965



C 8627: immer auf Unterseite abschneiden
always cut from the bottom
toujours couper par le bas



- S5 / W5 / B5 ; S6 / W6 / B6
- S7 / W7 / B7 ; S8 / W8 / B8
- S13P / S14P

Modell	Duschassen-Einbaumaß Shower tray installation dimensions Dimensions de montage de douche (mm)	Bodengleicher Aufbau Ground level installation Pose au sol dt (mm)
S5 / W5 / B5	735 - 755	695 - 715
S6 / W6 / B6	785 - 805	745 - 765
S7 / W7 / B7	885 - 905	845 - 865
S8 / W8 / B8	985 - 1005	945 - 965
S13P	1185 - 1205	1145 - 1165
S14P	1385 - 1405	1345 - 1365



C 8627: immer auf Unterseite abschneiden
always cut from the bottom
toujours couper par le bas

