















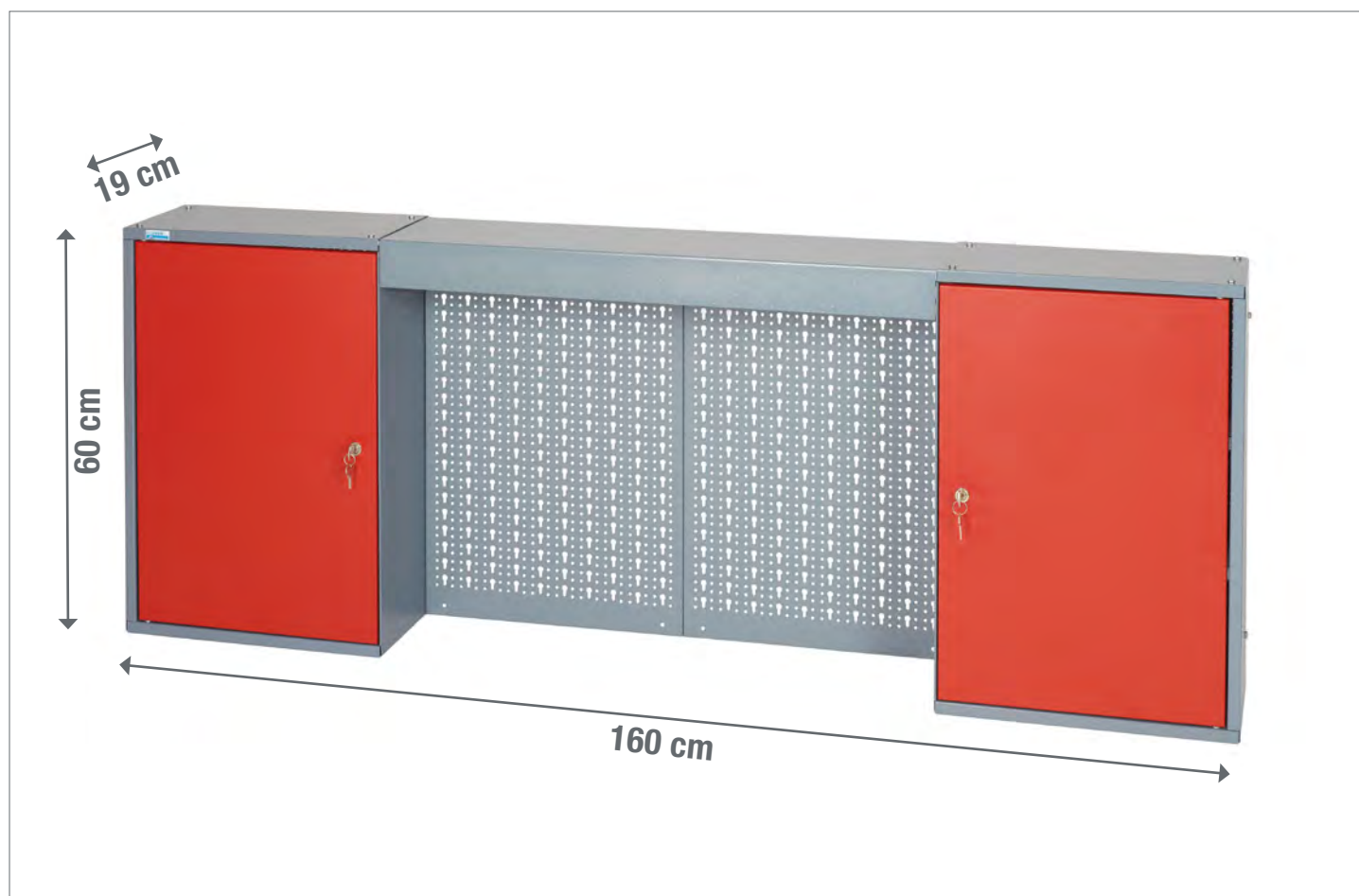


MONTAGEANLEITUNG

-  MONTAGEANLEITUNG
-  ASSEMBLY INSTRUCTION
-  DE INSTRUCTIE VAN DE ASSEMBLAGE
-  ISTRUZIONE DELL'ASSEMBLEA
-  INSTRUCCIÓN DE ASAMBLEA
-  INSTRUCTION DE MONTAGE
-  NÁVOD K MONTÁŽI
-  MONTERINGSANVISNING

-  MONTAJ TALIMATI
-  ASENNUSOHJE
-  BRUGSANVISNING
-  BRUKSANVISNING
-  UPUTE ZA MONTAŽU
-  NAVODILA ZA MONTAŽO
-  SZERELÉSI ÚTMUTATÓ
-  INSTRUCIUNI DE MONTAJ



Modell-Nr.

70400

ART.-NR. FRONT KORPUS

70401  Silber

70402  Silber

70404  Silber

70407  Silber

70406  

Friedrich Küpper GmbH
Friedrich-Küpper-Weg
54570 Berlingen
Deutschland

Telefon +49 (0) 65 91 - 95 42 0
Telefax +49 (0) 65 91 - 95 42 17
E-Mail info@friedrich-kuepper-gmbh.de
Internet www.friedrich-kuepper-gmbh.de

EINZELTEILE / PIECES

A

4x

400 mm x 200 mm



D

1x

850 mm x 200 mm



E

2x

600 mm x 200 mm



F

2x

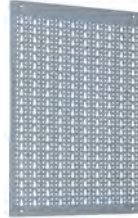
600 mm x 200 mm



J

4x

595 mm x 400 mm



M

2x

560 mm x 375 mm



P

4x

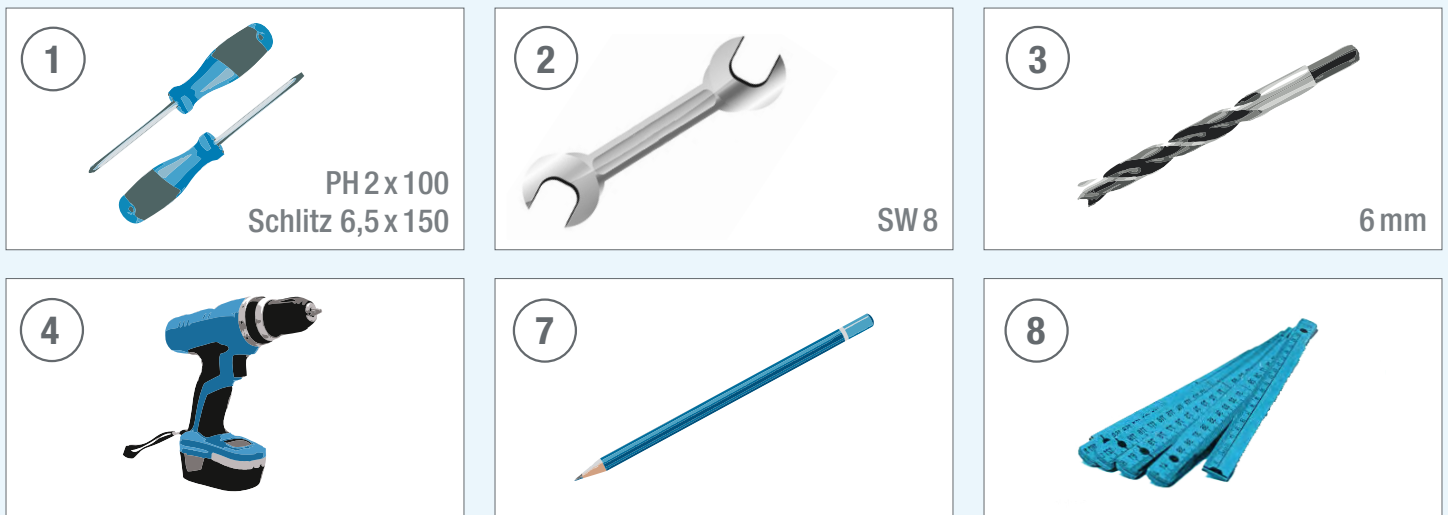
393 mm x 138 mm



BEUTELINHALT / BAG CONTENT



BENÖTIGTES WERKZEUG / NEEDED TOOLS



1.



2.

2x M5

2x M5x10

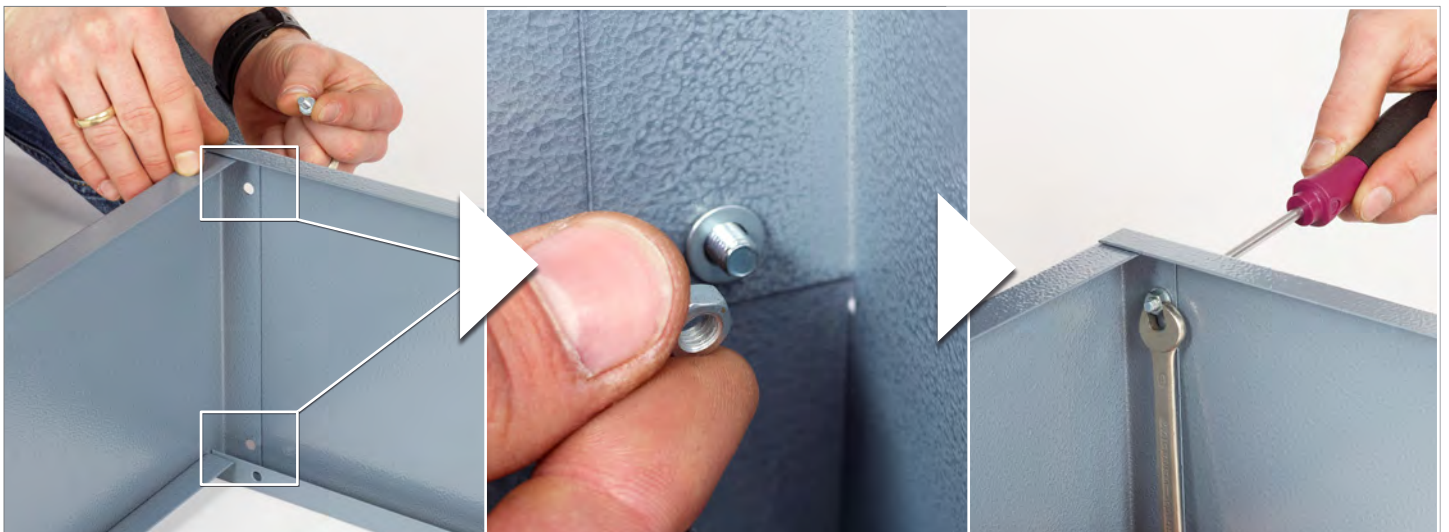
2x 5,3mm

2

SW8

1

PH2x100



3.

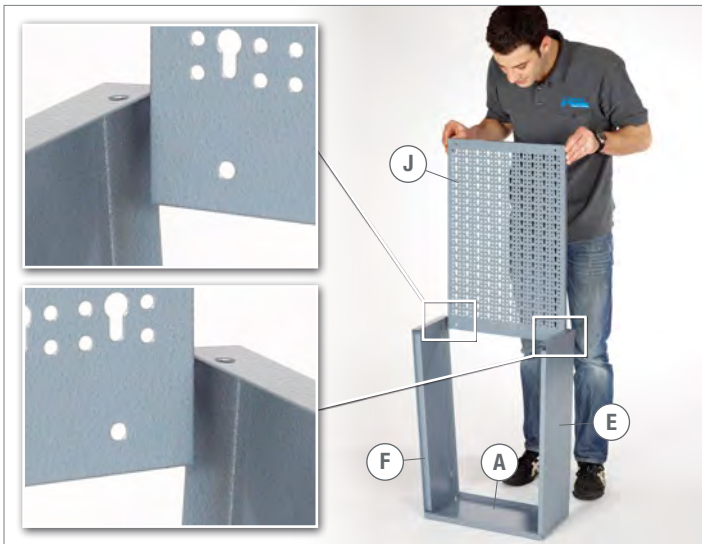


4.

2x M5 2x M5 x 10 2x 5,3 mm ② SW8 ① PH2x100



5.



6.



7.

2x M5 2x M5 x 10 2x 5,3 mm ② SW8 ① PH2x100



8.



9.

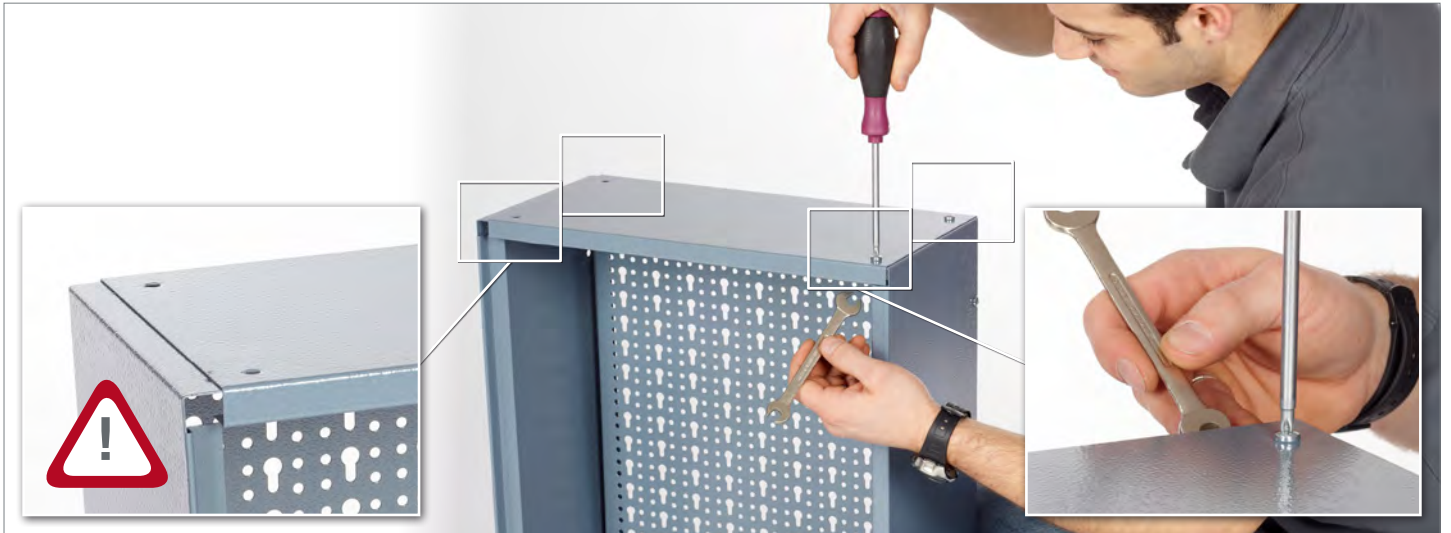
2x M5

2x M5 x 10

2x 5,3 mm

②  SW8

①  PH2x100

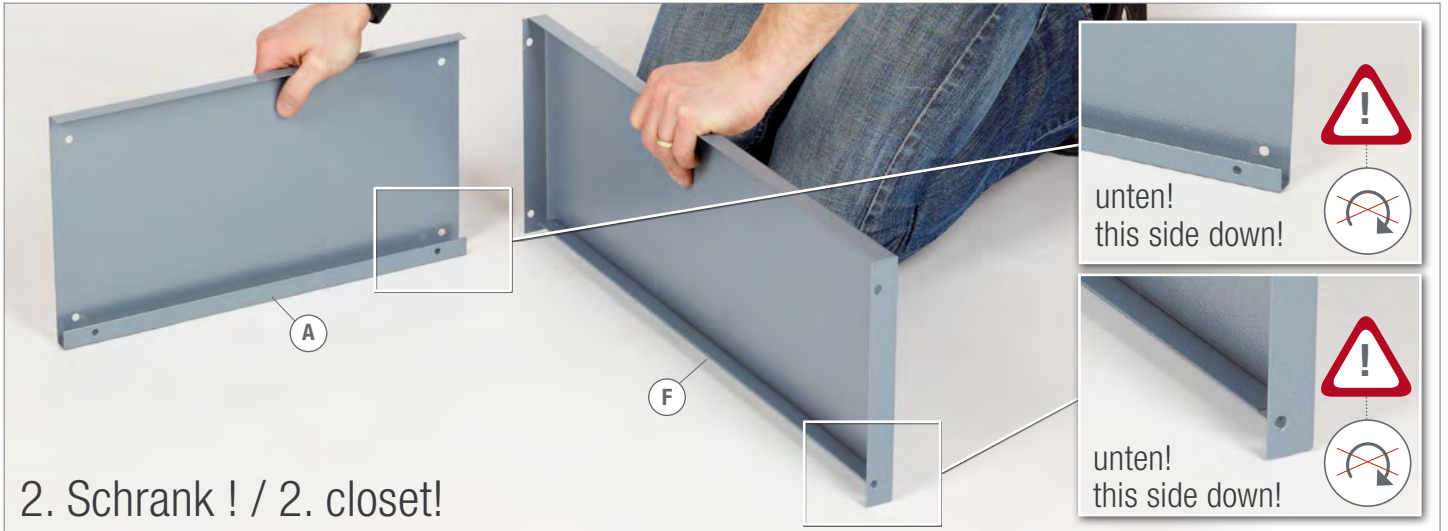


10. WICHTIG / IMPORTANT

vorne! / front!



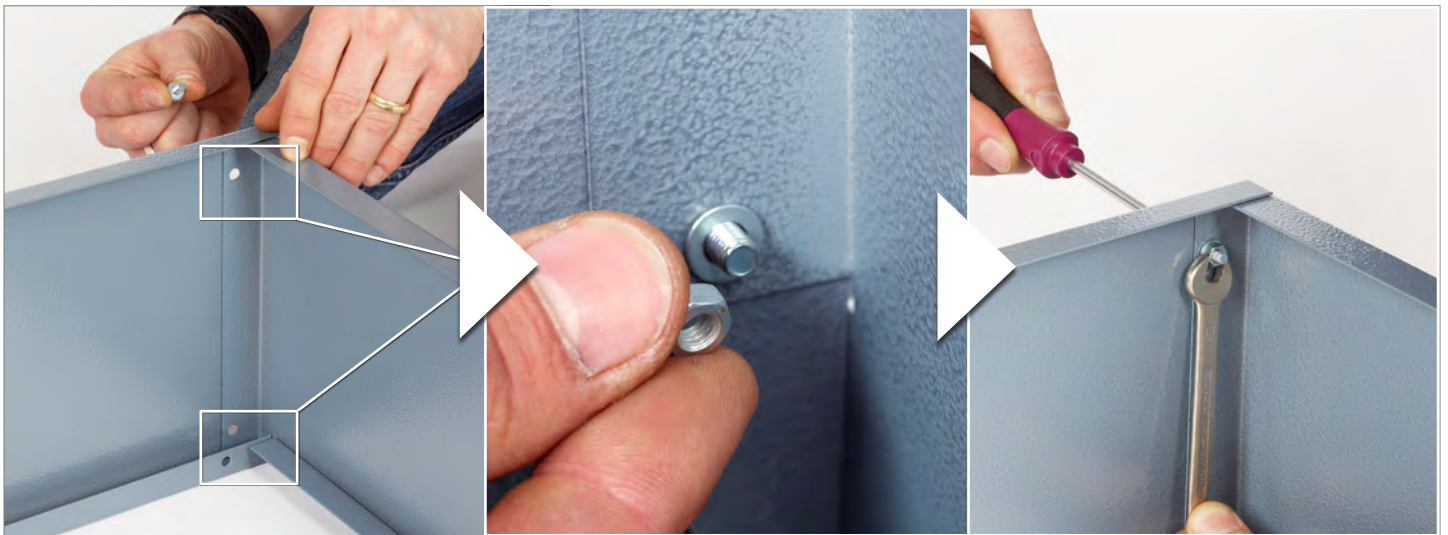
11.



12.

2x M5 2x M5 x 10 2x 5,3 mm

② SW8 ① PH 2 x 100



13.

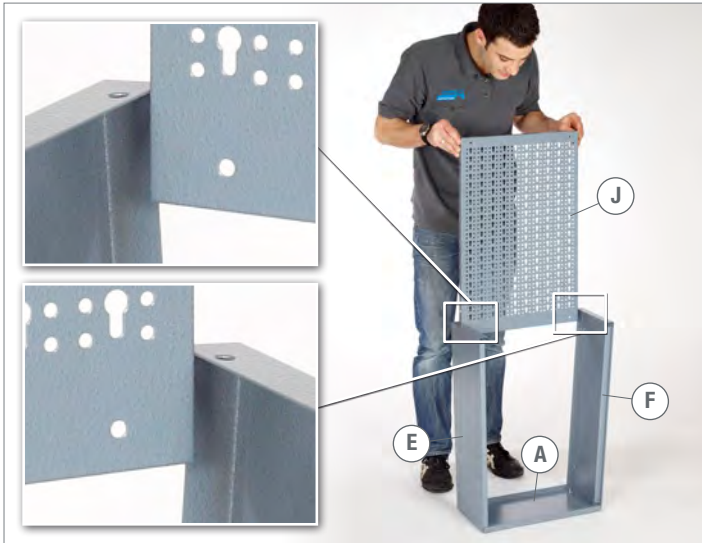


14.

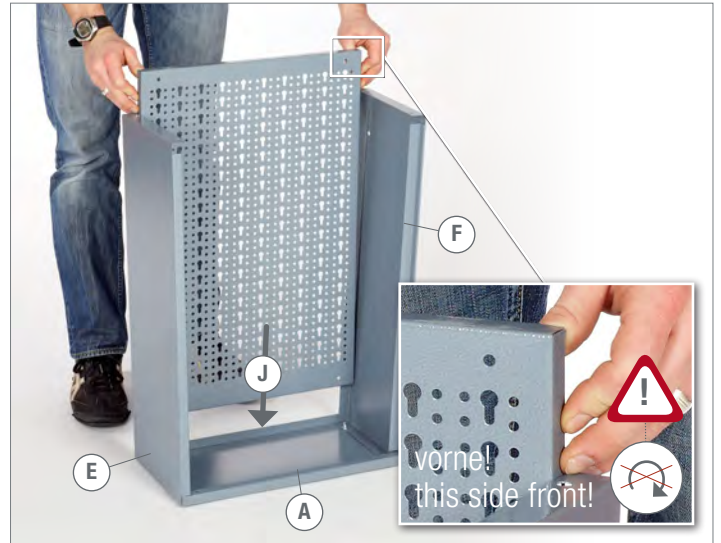
2x M5 2x M5 x 10 2x 5,3 mm ② SW8 ① PH 2 x 100



15.



16.



17.

2x M5 2x M5 x 10 2x 5,3 mm ② SW8 ① PH2x100



18.



19.

2x M5 2x M5 x 10 2x 5,3 mm

② SW8 ① PH2x100



20. WICHTIG / IMPORTANT

vorne! / front!



21.

2x M5

2x M5 x 10

2x 5,3 mm

② SW8

① PH2x100



22.

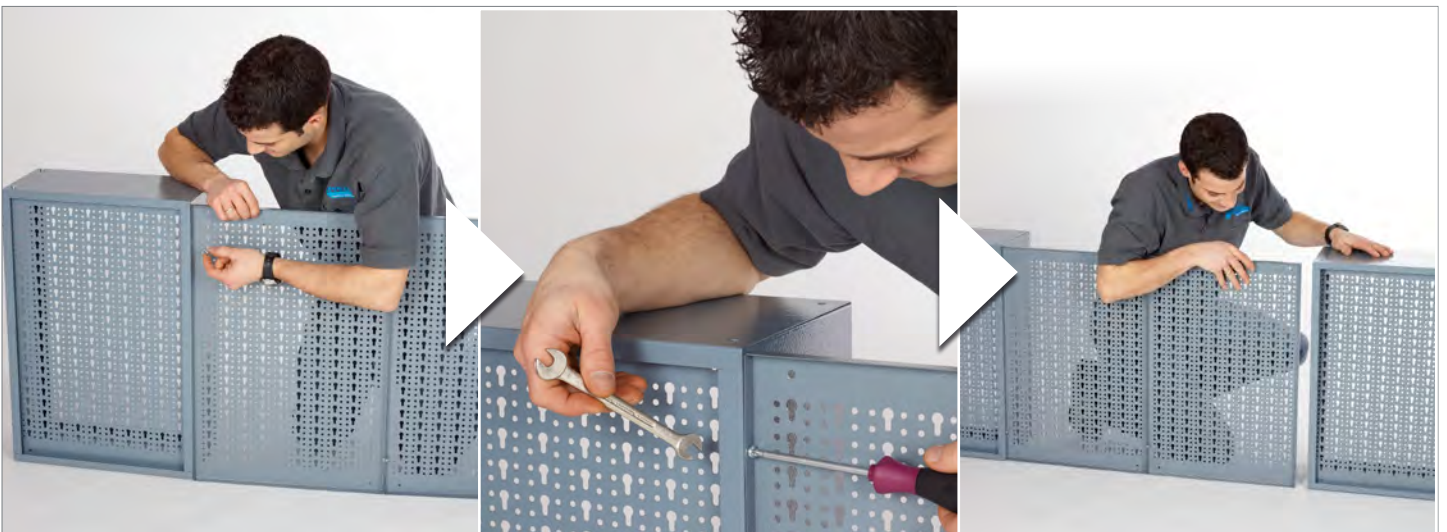
4x M5

4x M5 x 10

4x 5,3 mm

② SW8

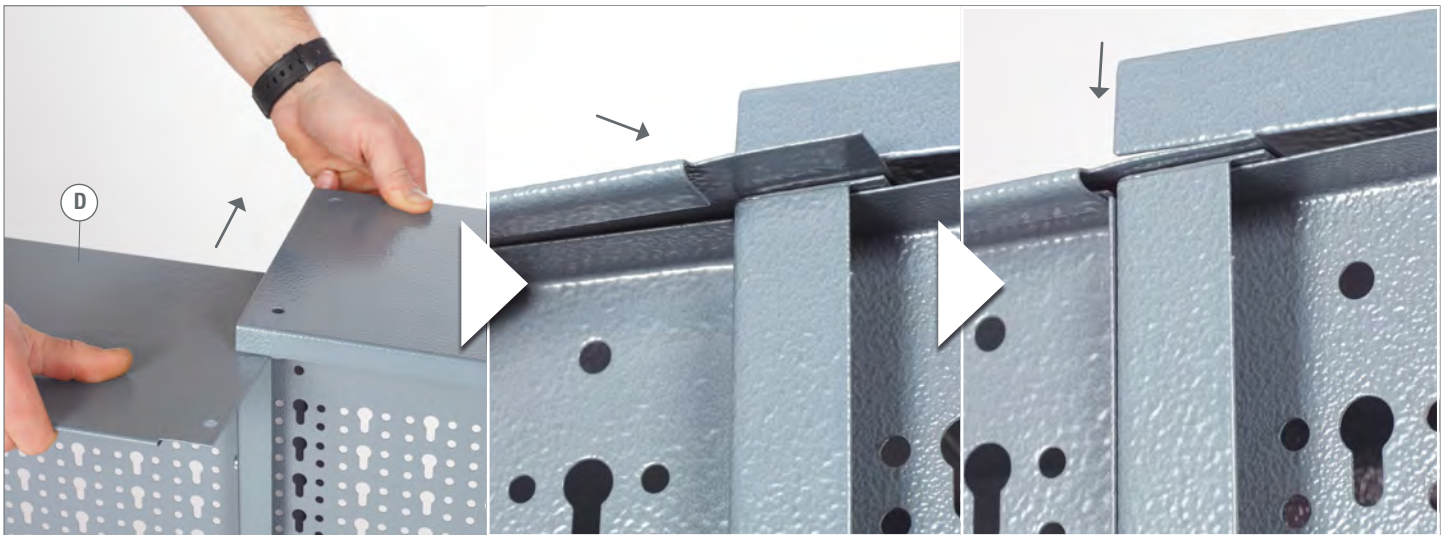
① PH2x100



23.



24.



25.

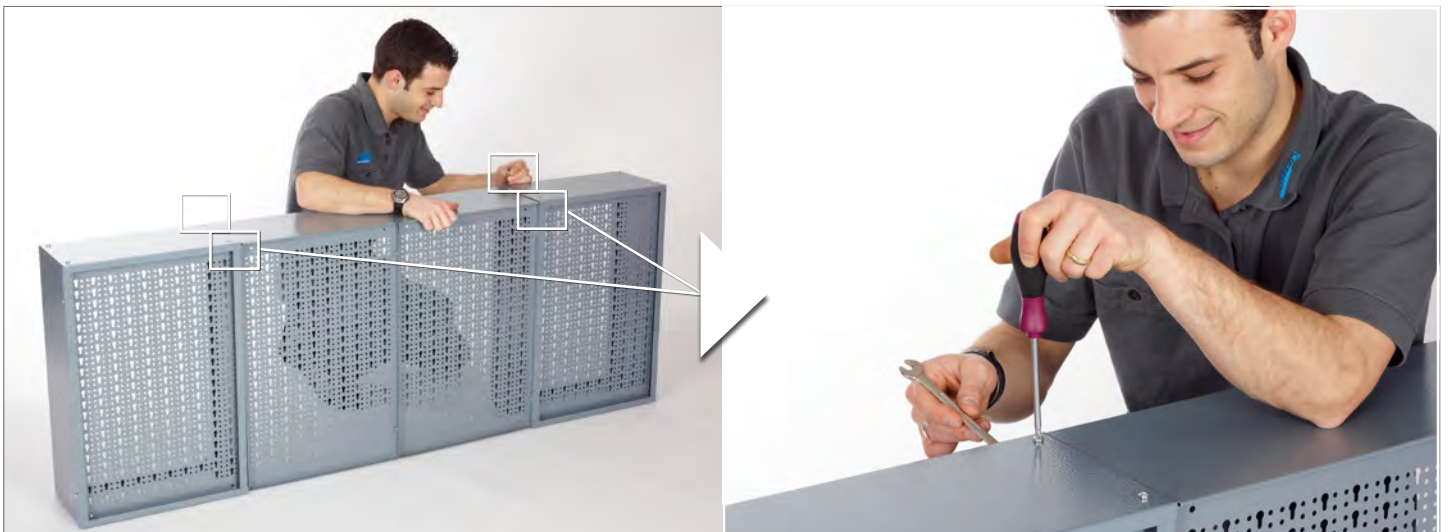
4x M5

4x M5x10

4x 5,3 mm

②  SW8

①  PH2x100



26.



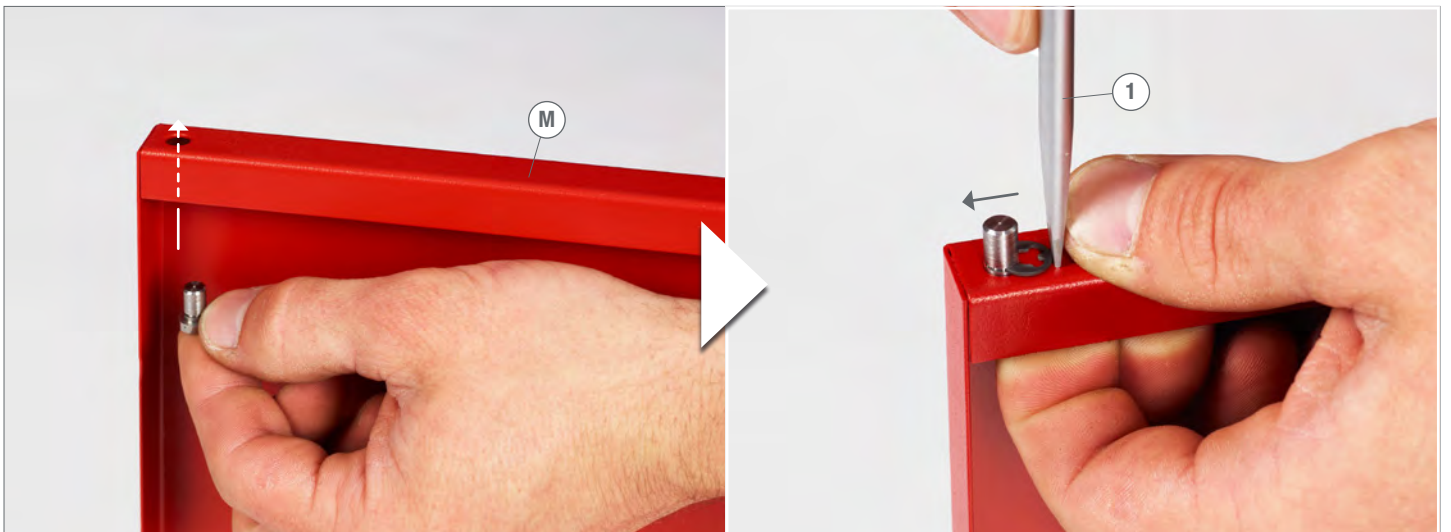
27.



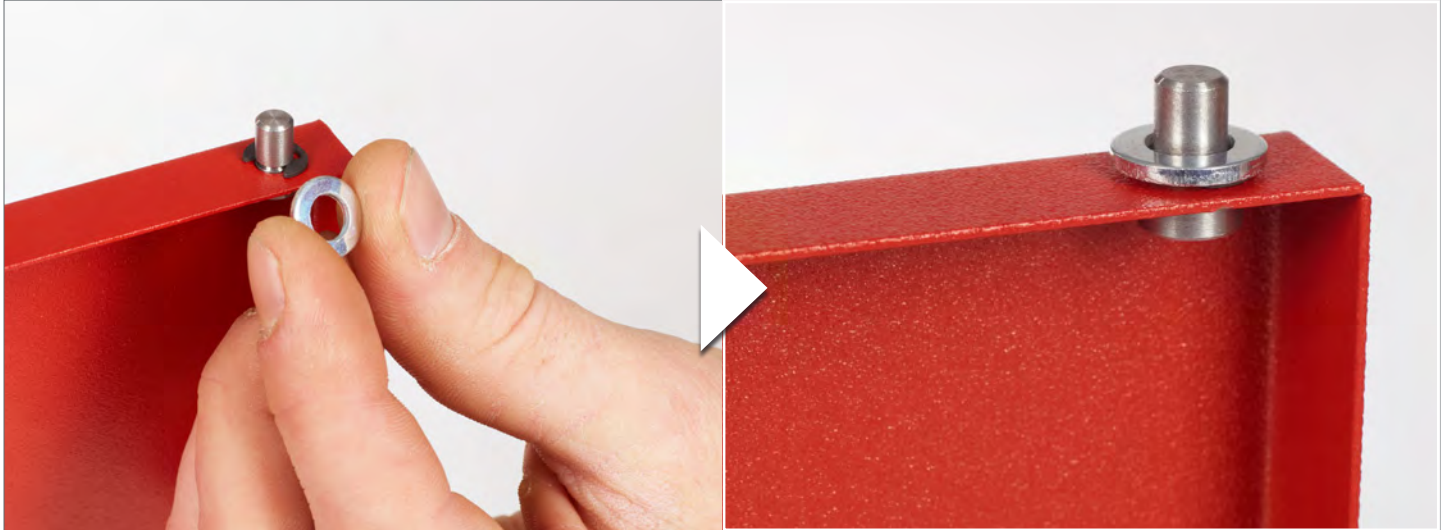
28.



Schlitz 6,5 x 150



29.  2x 6,4 mm

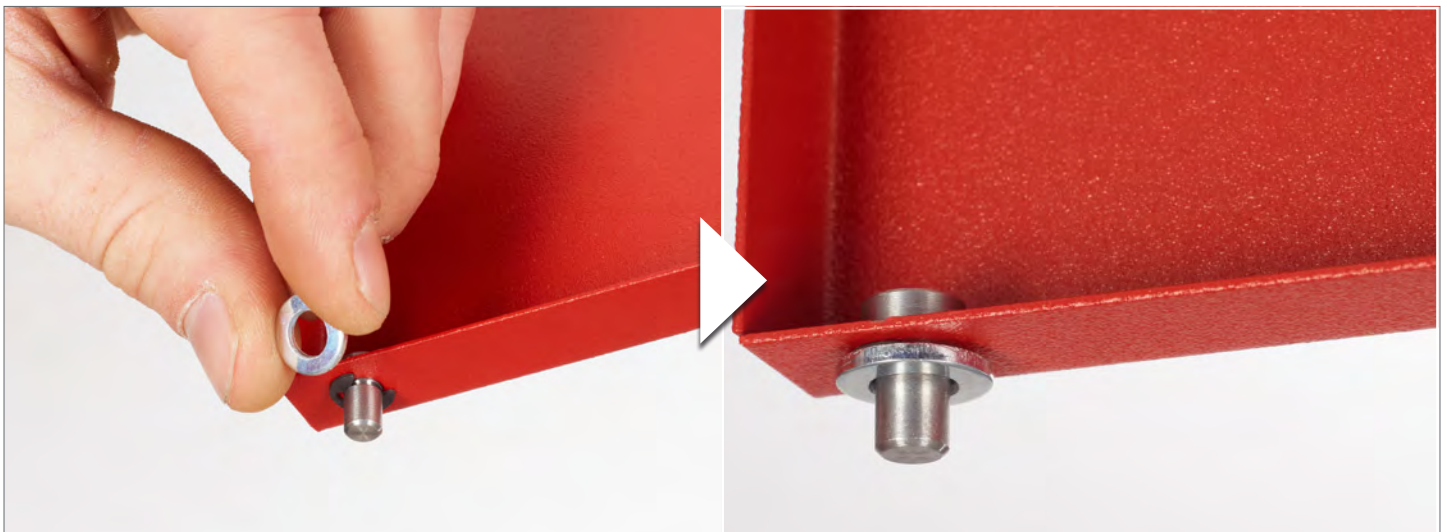


30.  2x  2x 6 x 12

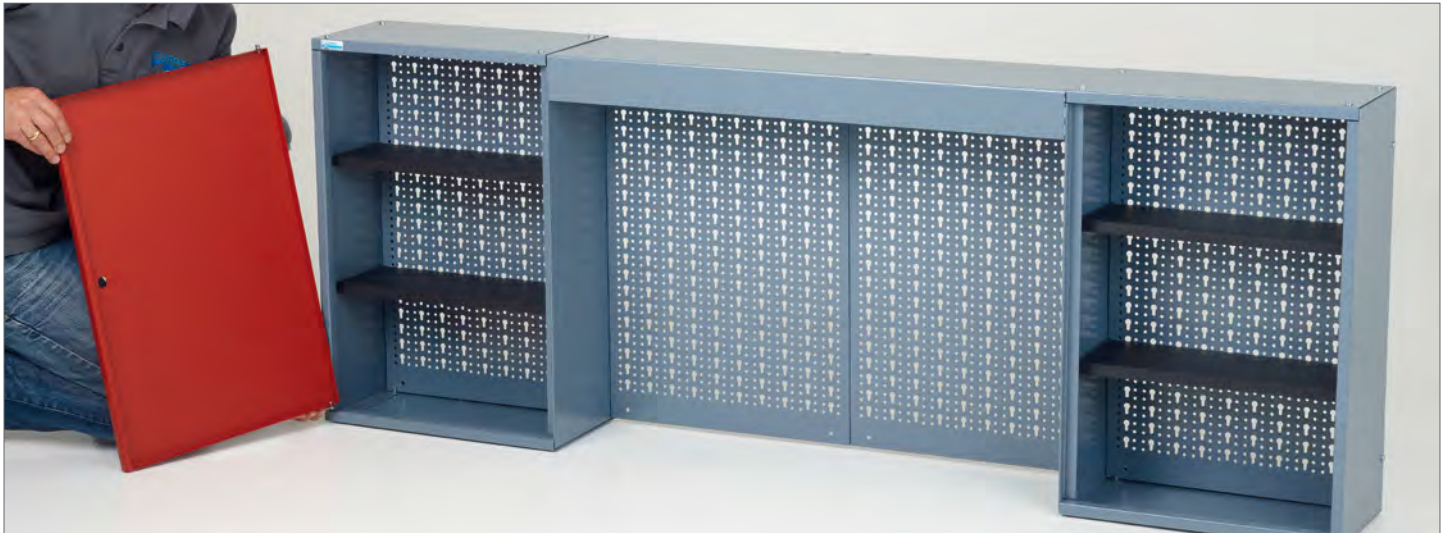
 ① Schlitz 6,5 x 150



31.  2x 6,4 mm



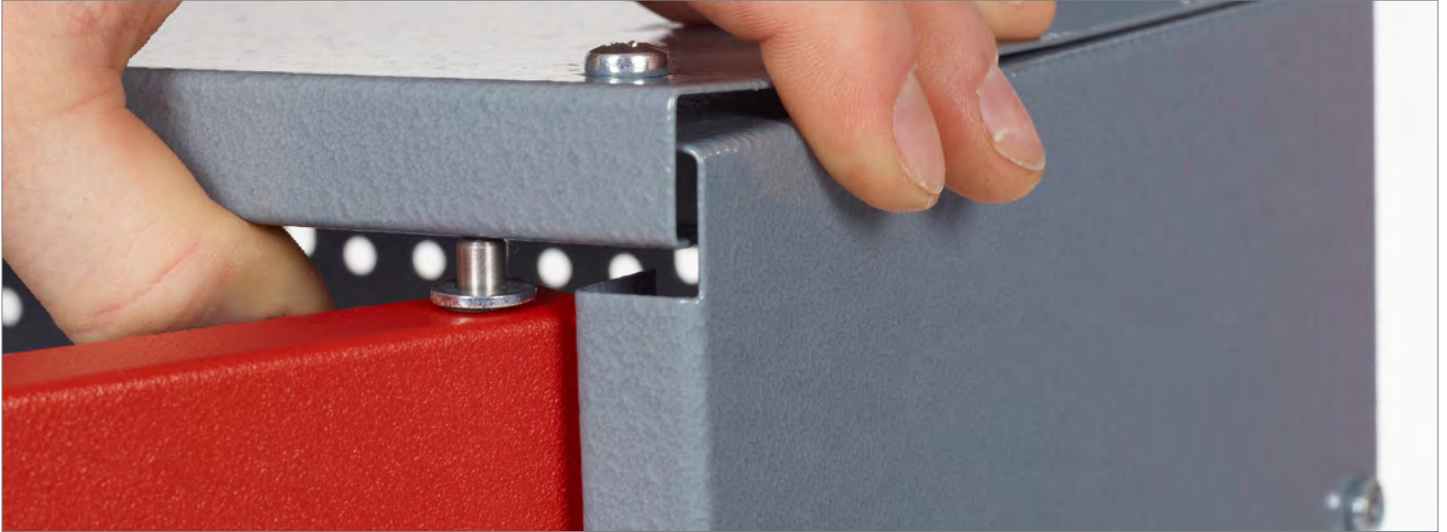
32.



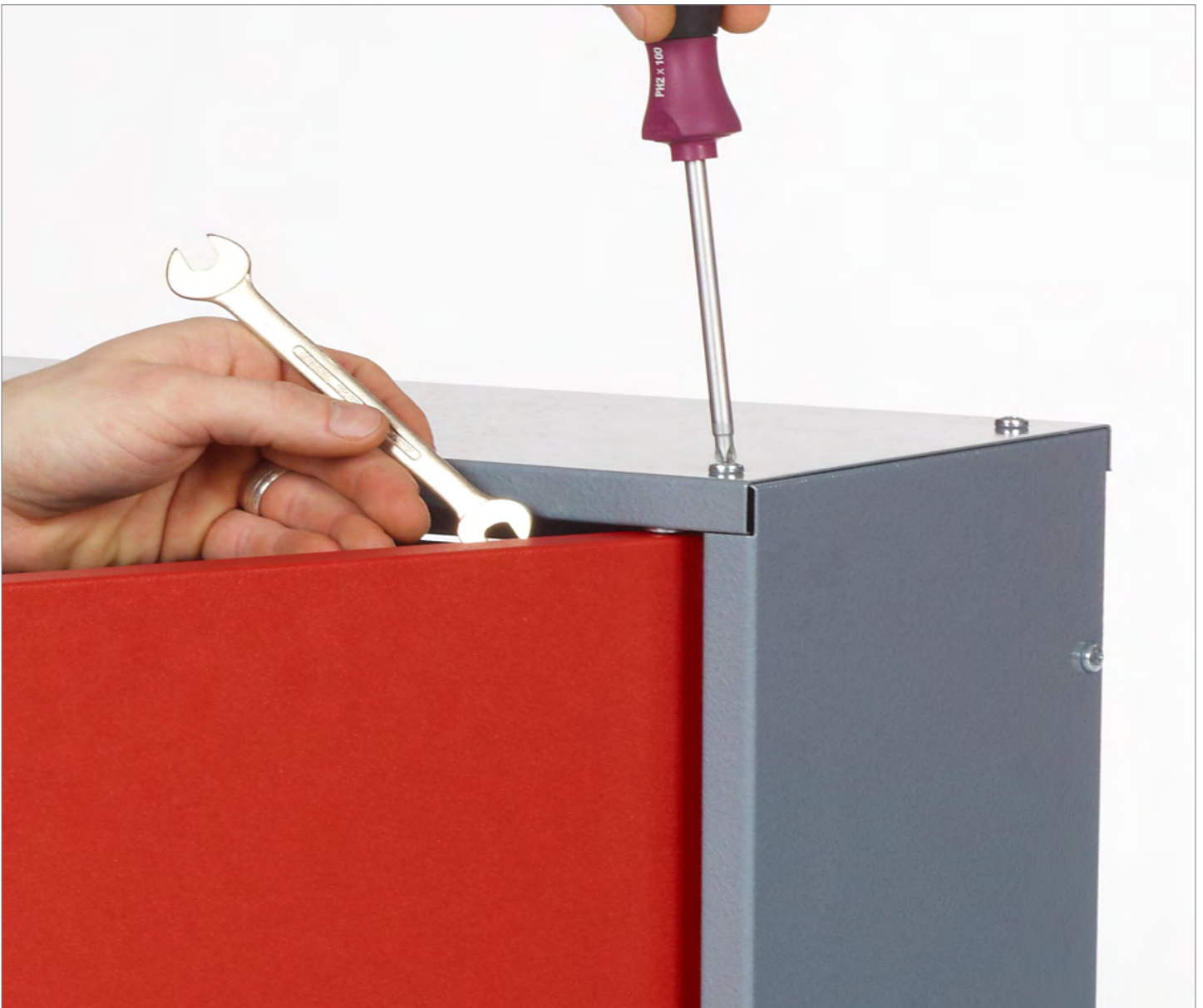
33.



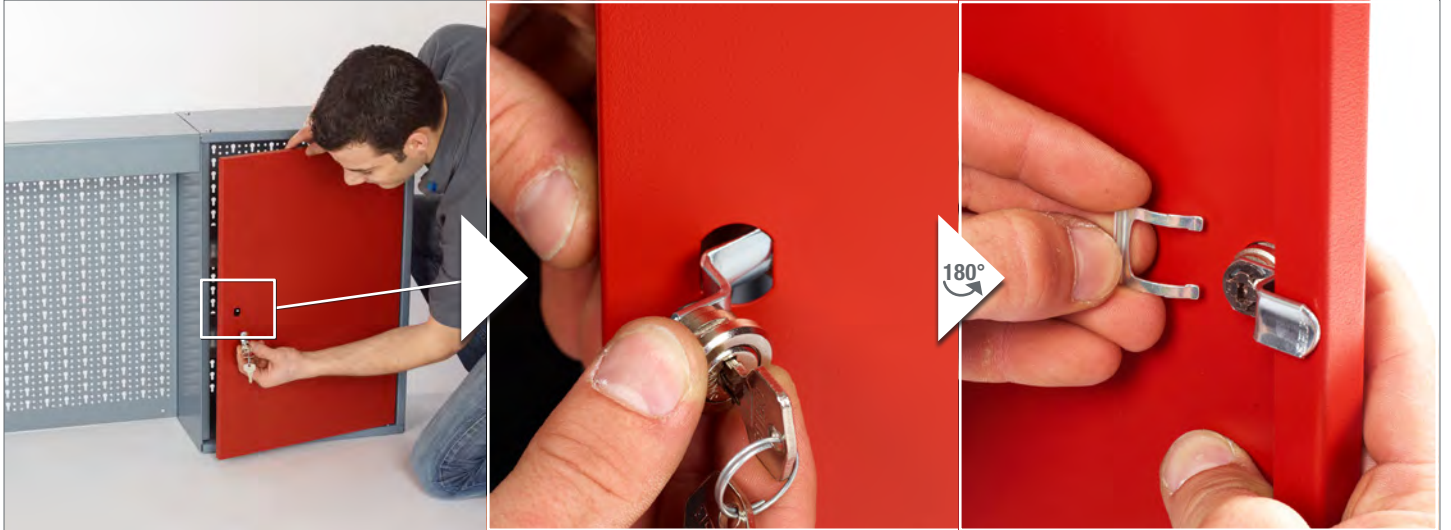
34.



ZU SCHRITT 10. UND 20. / IN ADDITION TO STEP 10. AND 20.



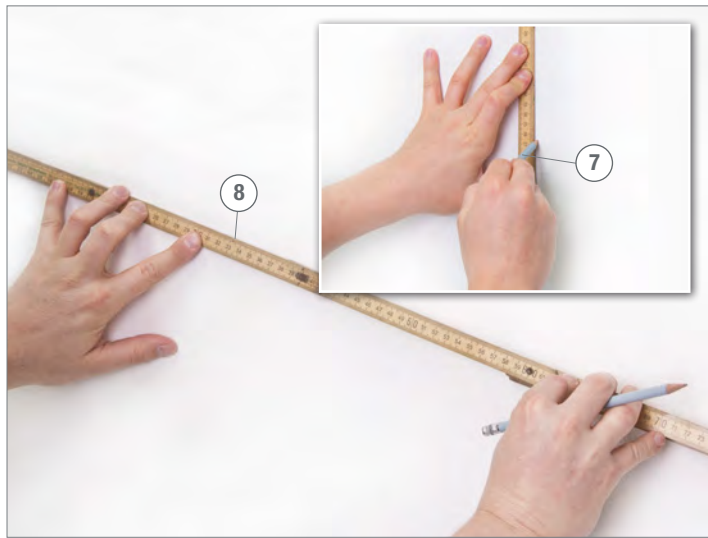
35.



36.



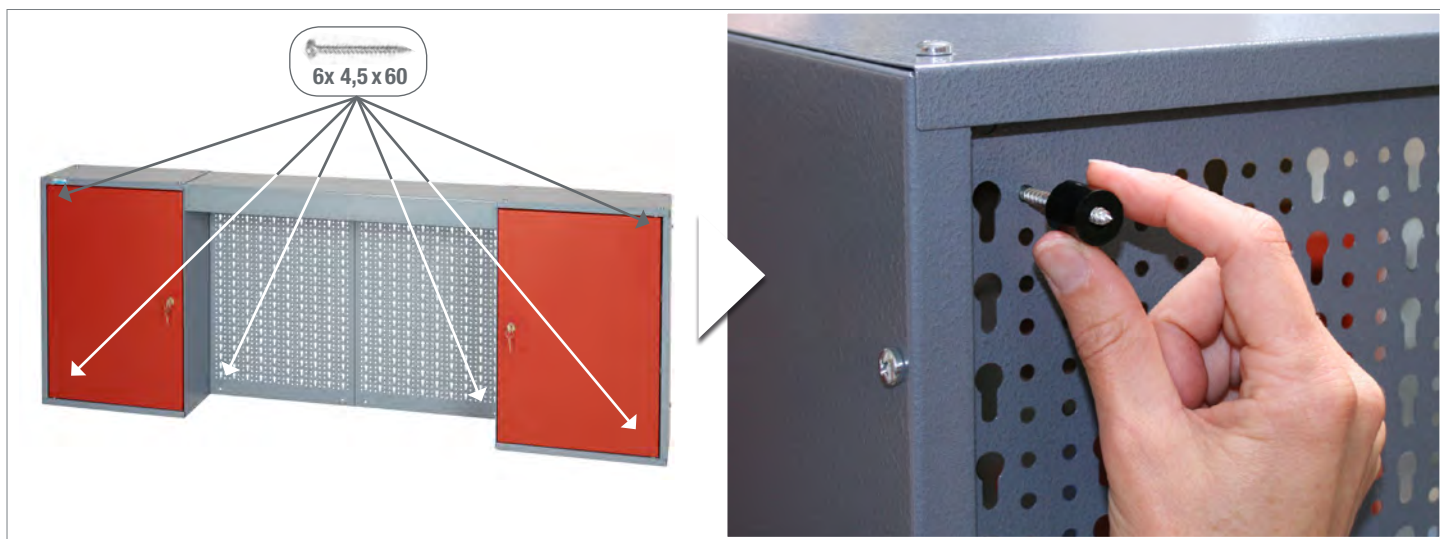
A.  



B.  6x 6 mm  



C.  6x 4,5 x 60



Modell-Nr.

70400