

MONTAGEANLEITUNG

- | | | | |
|--|---------------------------------|---|------------------------|
|  | MONTAGEANLEITUNG |  | MONTAJ TALIMATI |
|  | ASSEMBLY INSTRUCTION |  | ASENNUSOHJE |
|  | DE INSTRUCTIE VAN DE ASSEMBLAGE |  | BRUGSANVISNING |
|  | ISTRUZIONE DELL'ASSEMBLEA |  | BRUKSANVISNING |
|  | INSTRUCCIÓN DE ASAMBLEA |  | UPUTE ZA MONTAŽU |
|  | INSTRUCTION DE MONTAGE |  | NAVODILA ZA MONTAŽO |
|  | NÁVOD K MONTÁŽI |  | SZERELÉSI ÚTMUTATÓ |
|  | MONTERINGSANVISNING |  | INSTRUCTIUNI DE MONTAJ |



Modell-Nr.

12290

ART.-NR. FRONT KORPUS

12291  Silber

12292  Silber

12294  Silber

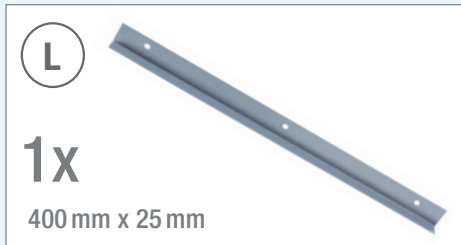
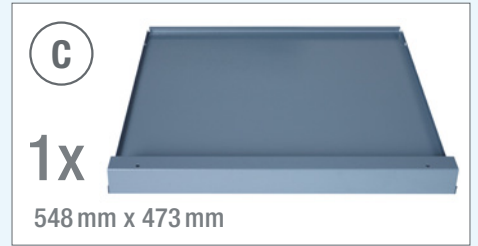
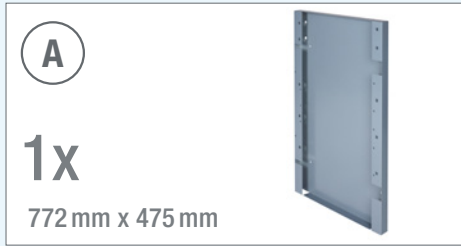
12297  Silber

12296  

Friedrich Küpper GmbH
Friedrich-Küpper-Weg
54570 Berlingen
Deutschland

Telefon +49 (0) 65 91 - 95 42 0
Telefax +49 (0) 65 91 - 95 42 17
E-Mail info@friedrich-kuepper-gmbh.de
Internet www.friedrich-kuepper-gmbh.de



EINZELTEILE / PIECES



BEUTELINHALT / BAG CONTENT

 4x 5,5x19 mm	 4x KU 4x16 mm	 14x M5x10 mm	 14x ø5,3 mm	 14x M5	 1x M6x16 mm
 1x ø6,4 mm	 1x M6	 1x 6x12 mm	 1x	 1x	 1x
 4x	 4x	 4x M8	 2x		

BENÖTIGTES WERKZEUG / NEEDED TOOLS

 ① PH 1x100 PH 2x100 Schlitz 6,5x150	 ② SW 7 SW 8 SW 10	 ③ 4 mm
 ④	 ⑤	 ⑥ 5 mm
 ⑦	 ⑧	

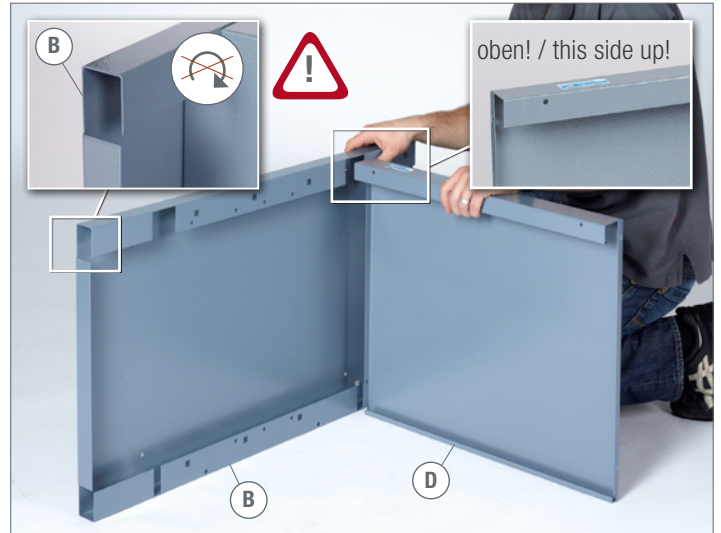
1.



2.

2x M5 2x M5 x 10 2x 5,3 MM

② SW 8 ① PH 2 X 100



3.

2x M5 2x M5 x 10 2x 5,3 MM

② SW 8 ① PH 2 X 100



4. 2x M5 2x M5x10 2x 5,3MM

② SW8 ① PH2X100



5. 6x M5 6x M5x10 6x 5,3MM ② SW8 ① PH2X100



6. 4x M8 4x 4x 4x ⑤



7.

2x M5

2x M5x10

2x 5,3mm

② SW 8

① PH 2x100

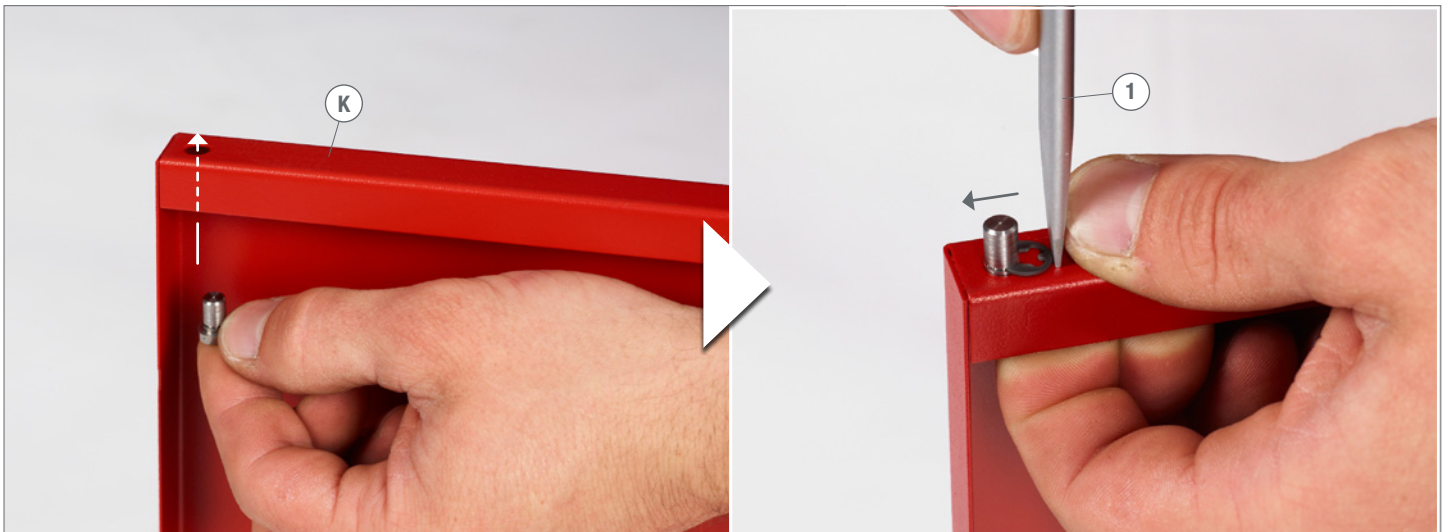


8.

1x

1x 6x12

① Schlitz 6,5 x 150

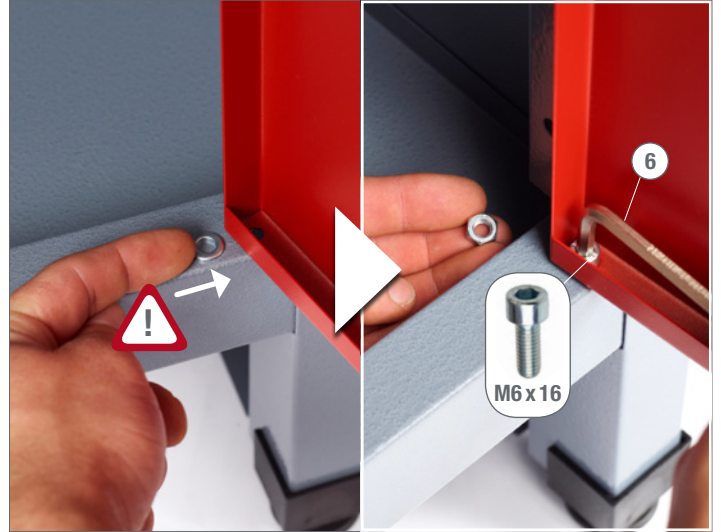


9.



10.

- 1x M6
- 1x M6x16
- 1x 6,4 mm
- ② SW 10
- ⑥



11.

- 1x
- 1x



12. ^(X)
2x CR



13. ^(X)
2x CL



14.

⑧  ⑦ 



15.



16.

4x 5,5x19



17.



18.

4x KU4x16

2x



②

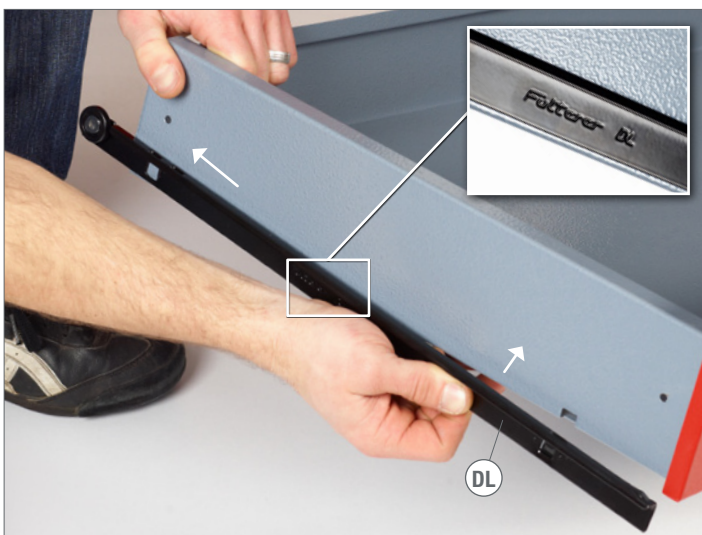
SW7

①

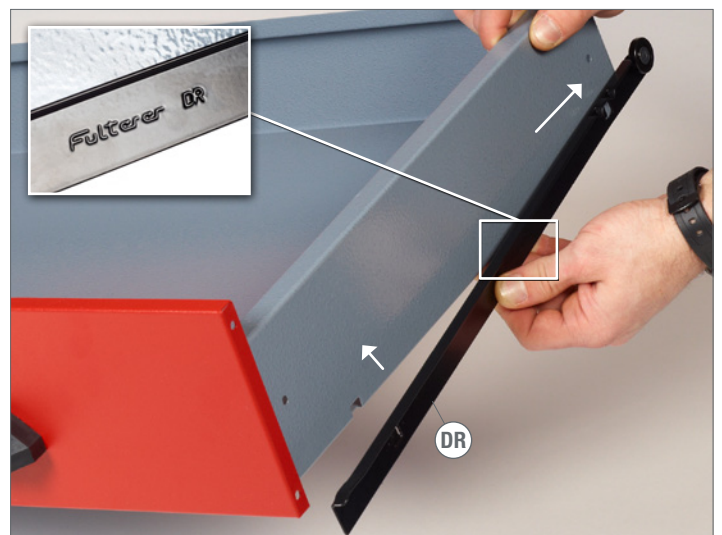
PH1x100



19.



20.



21.





Modell-Nr.

12290