

Domestic users / Lights & Floodlights / Outdoor Lights / L 1

## L 1

### Information copy

Practical design. Practical sensor-switched outdoor light L 1, ideal for building entrances and building fronts, 180° angle of coverage, reach up to 10 m, selectable time and twilight threshold, includes sheet of house numbers.



### Details

**3 JAHRE**  
HERSTELLER  
GARANTIE  
steinel.de/garantie

manufacturer warranty [steinel.de/garantie](http://steinel.de/garantie)



2 - 2000 lux



IP44



ideal 2 m



max. 10 m



90° vertical



infrared sensor 180°



energy saving



8 sec - 35 min

# max.60w

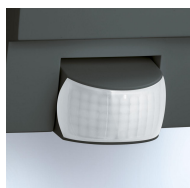
max. 60 W E27



Including sheet of self-adhesive house numbers



Impact-resistant material rated to IK 07



UV-protected material

---

### Technical specifications L 1 Black

---

<b>European Article Number (EAN)</b>	4007841650612
<b>Dimensions(w x h x d):</b>	255 x 110 x 120 mm
<b>Voltage</b>	230-240 V/50 Hz
<b>Sensor type</b>	Passive infrared
<b>Output</b>	60 W max. / E 27
<b>Detection angle</b>	180°
<b>Tilting range</b>	90 °
<b>Capability of masking out individual segments</b>	Yes
<b>Reach</b>	10 m max.
<b>Time setting</b>	8 sec. - 35 min.
<b>Response brightness</b>	2-2000 lx
<b>Degree of protection (IP)</b>	IP44
<b>Protection class</b>	II
<b>Impact strength</b>	IK07
<b>Material</b>	UV-resistant plastic

---

<b>With lamp</b>	No
<b>Version</b>	Black
<b>Sheet of self-adhesive house numbers</b>	included

### **Application**

ideal for building entrances and fronts of buildings