

Instrucciones de montaje

Pitarch
SYSTEM KIT MUEBLES

Assembly instructions



REF. 10032

Te aconsejamos / We advise you

Ordena y cuenta las piezas y herrajes

Habilita una zona para el montaje

Utiliza la caja de embalaje desplegada como superficie de apoyo

No fuerces los tornillos y los elementos de montaje

Sigue paso a paso las instrucciones de montaje

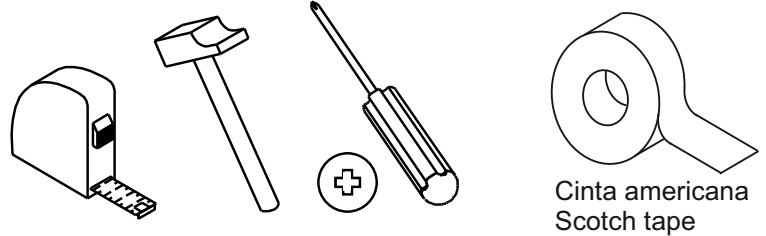
Order and count the parts and fittings

Enable an area for assembling.

Do not force the screws or assembly parts

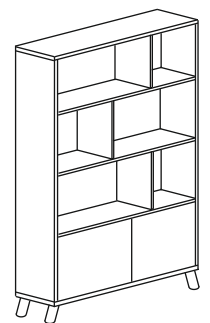
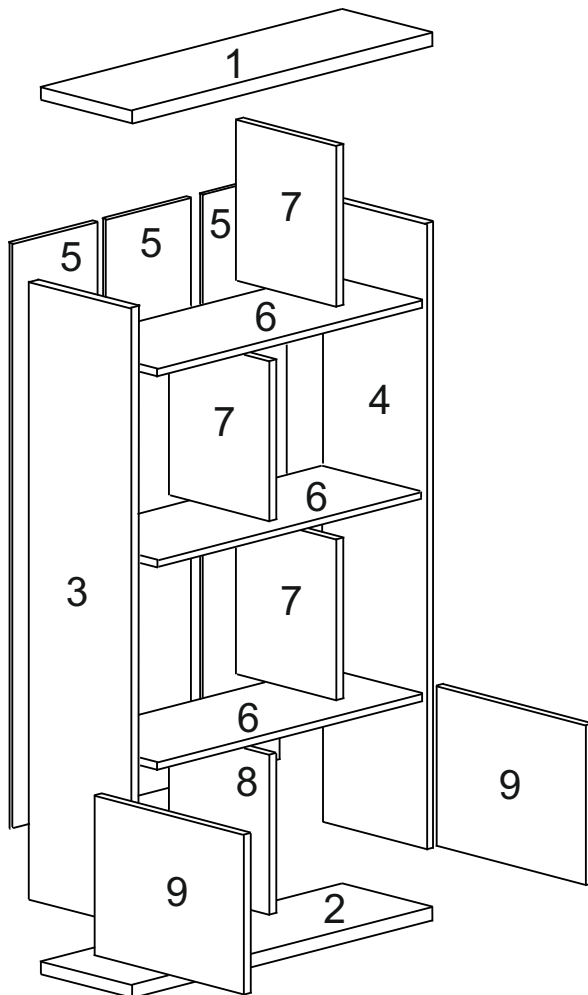
Follow the assembly instructions step by step

Herramientas necesarias Tools required

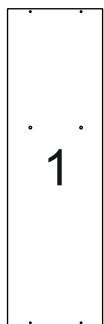


Herrajes incluidos / Fittings included

<p>Push x 2 N°722018</p>	<p>Top x 4 N°721127</p>	<p>Pun x 60 N°720006</p>	<p>Tap x 16 N°721308</p>	<p>Rei x 32 N°721020</p>
<p>Exc x 20 N°721016/721017</p>	<p>Lz x 1 N°721034</p>	<p>Col x 1 N°721060</p>	<p>Bss x 4 N°723024</p>	<p>Pata x 5 N°710259</p>

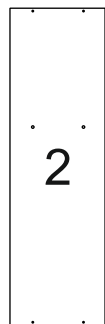


X3



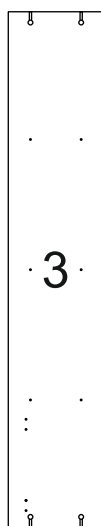
1

1000x300 mm
1003231



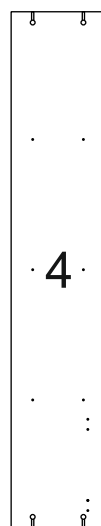
2

1000x300 mm
1003232



3

1628x298 mm
1003215



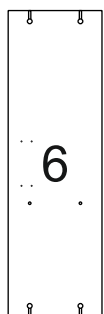
4

1628x298 mm
1003214



5

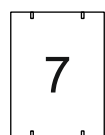
1668x331 mm
910325



X3

6

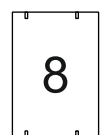
966x296 mm
1003220



X3

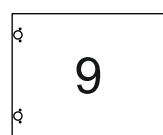
7

395x295 mm
1003251



8

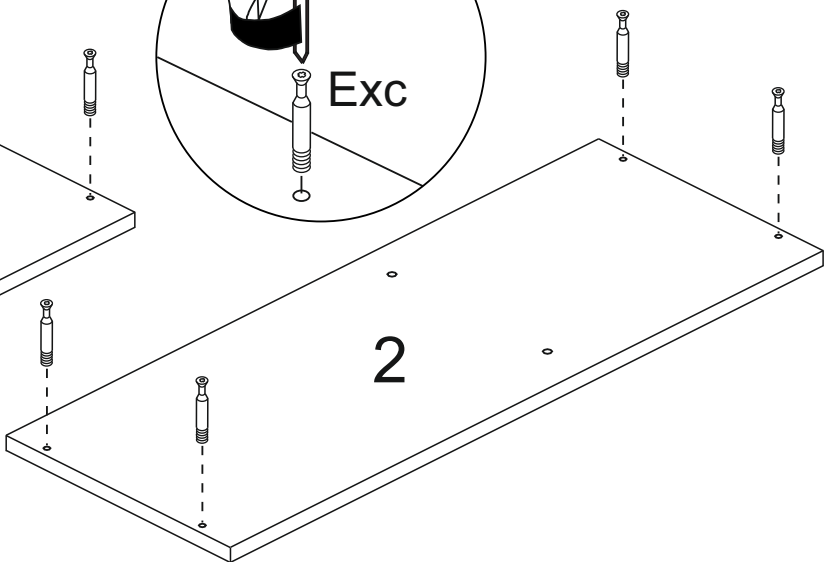
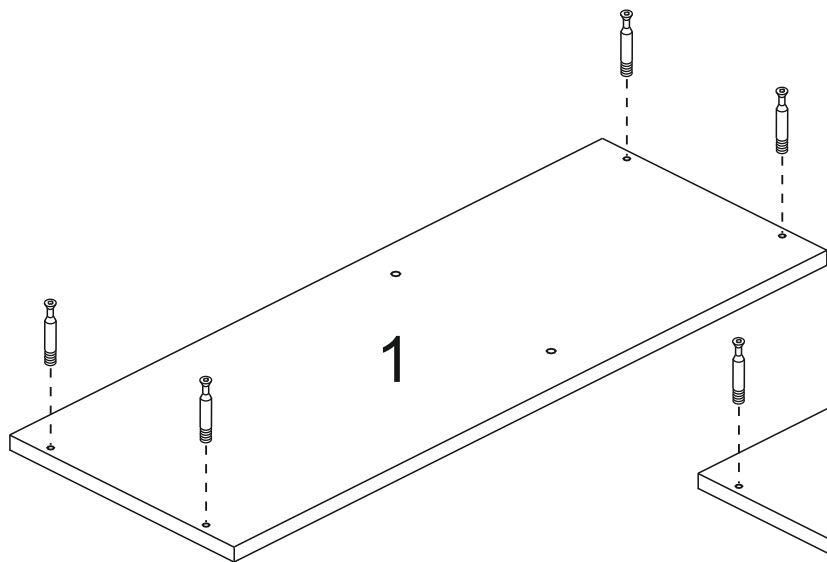
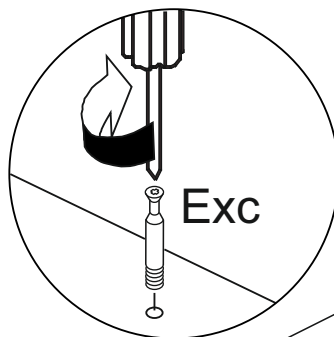
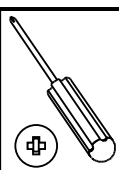
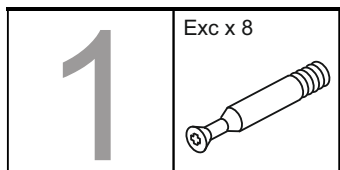
395x272 mm
1003252

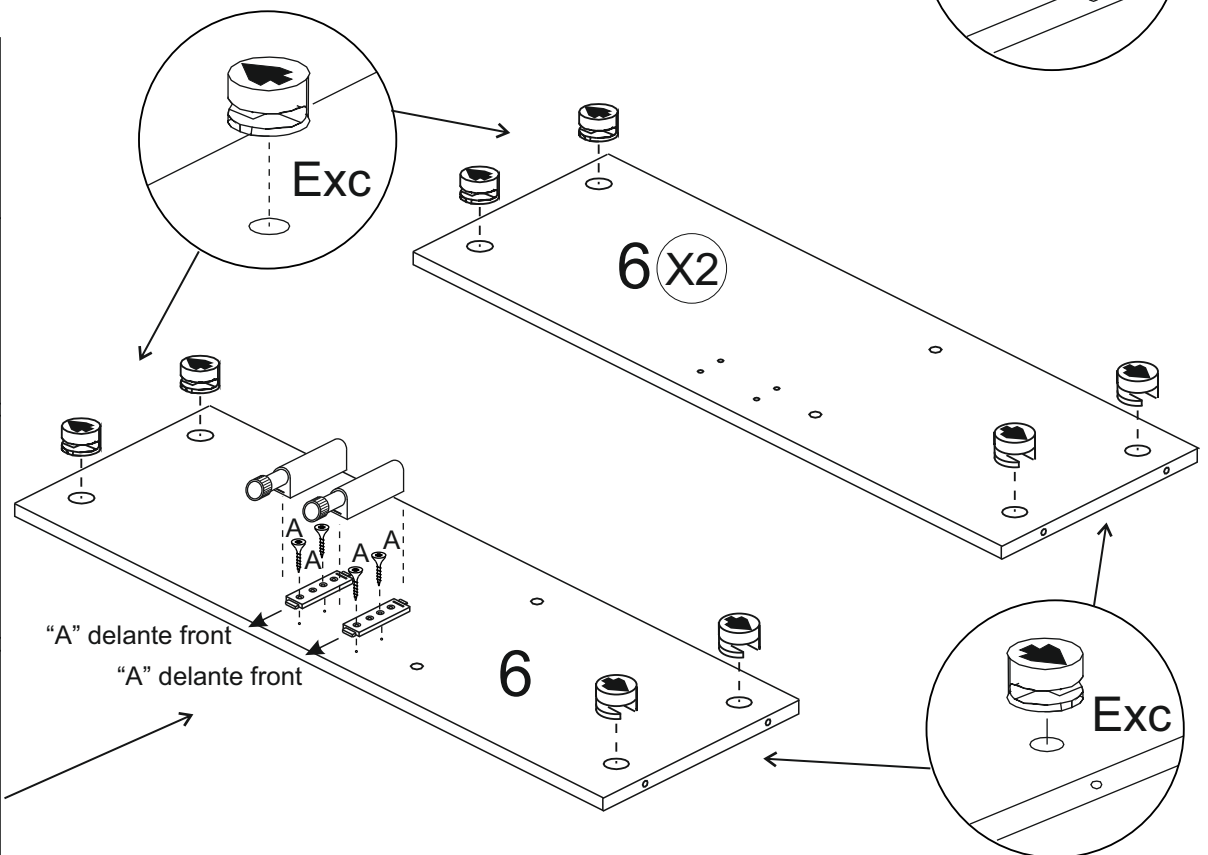
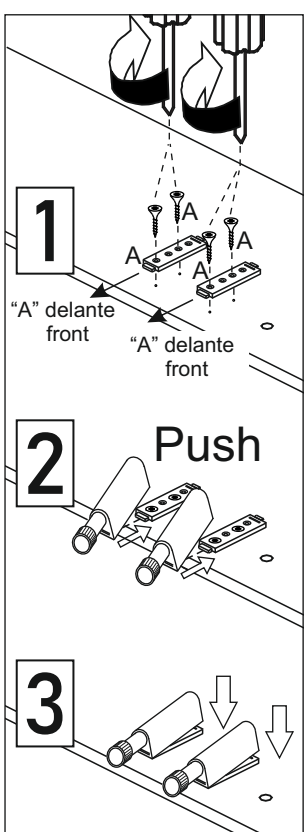
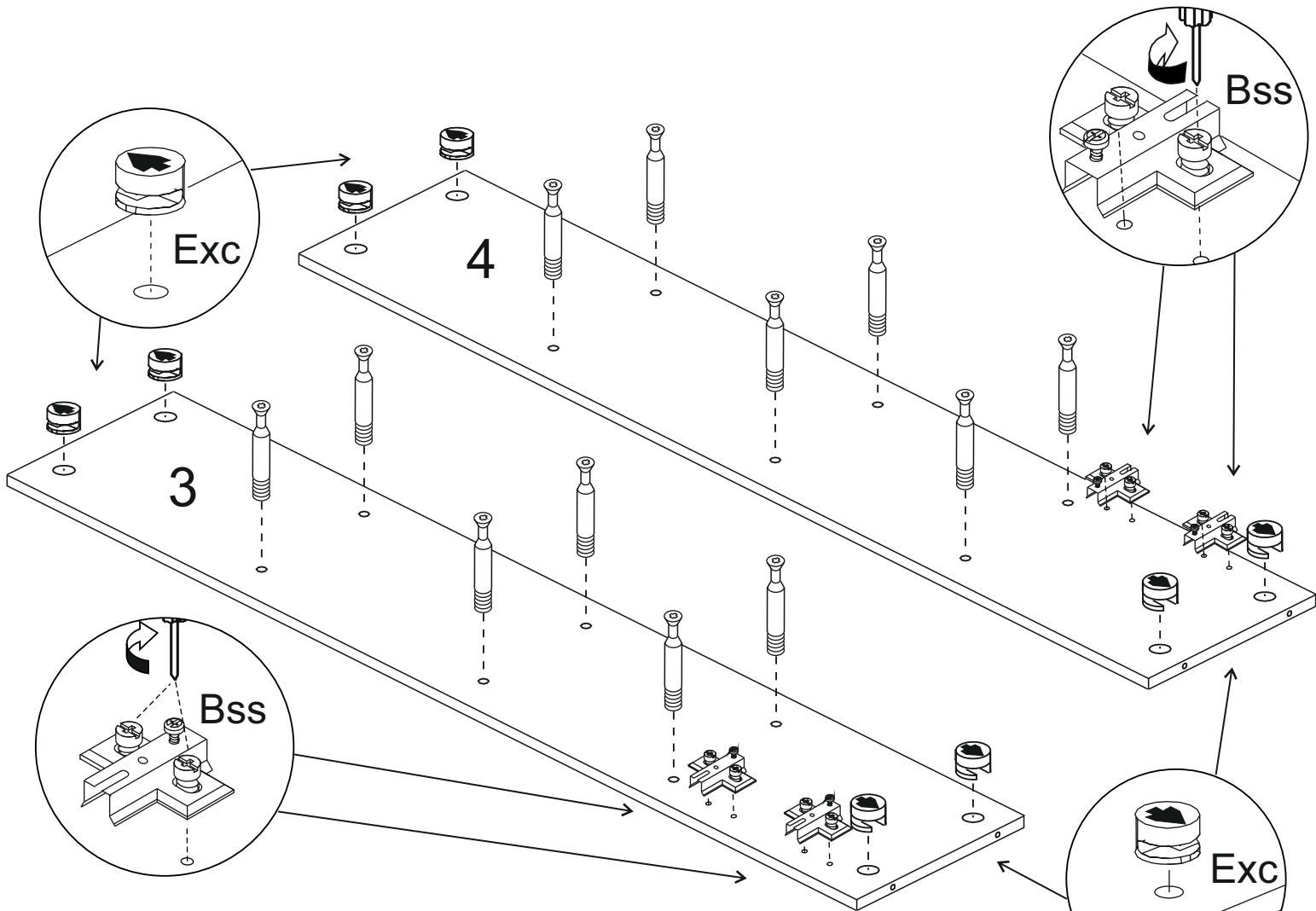
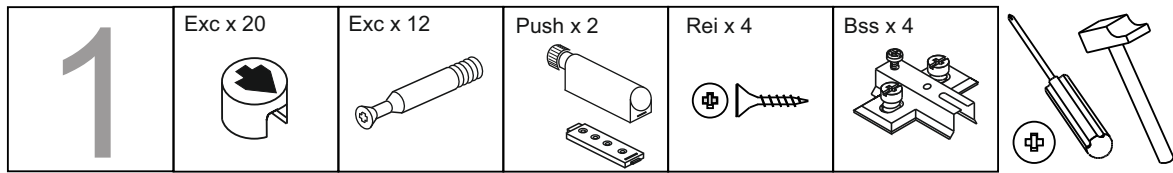


X2

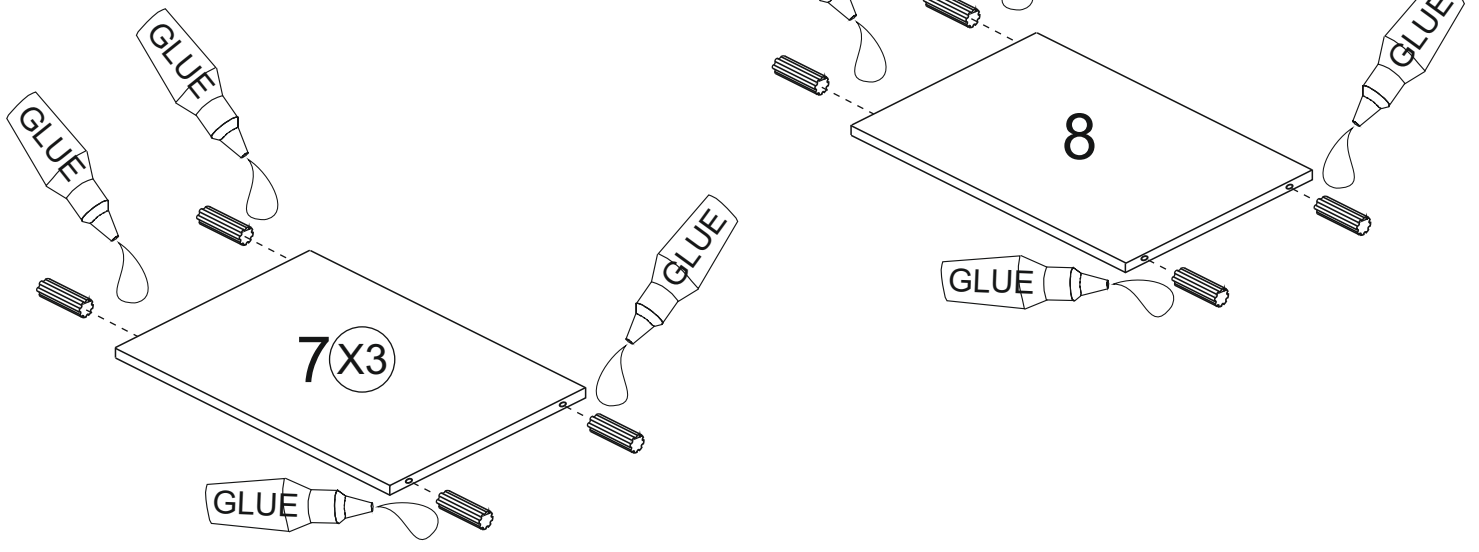
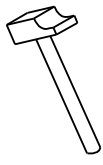
9

481x390 mm
1003240

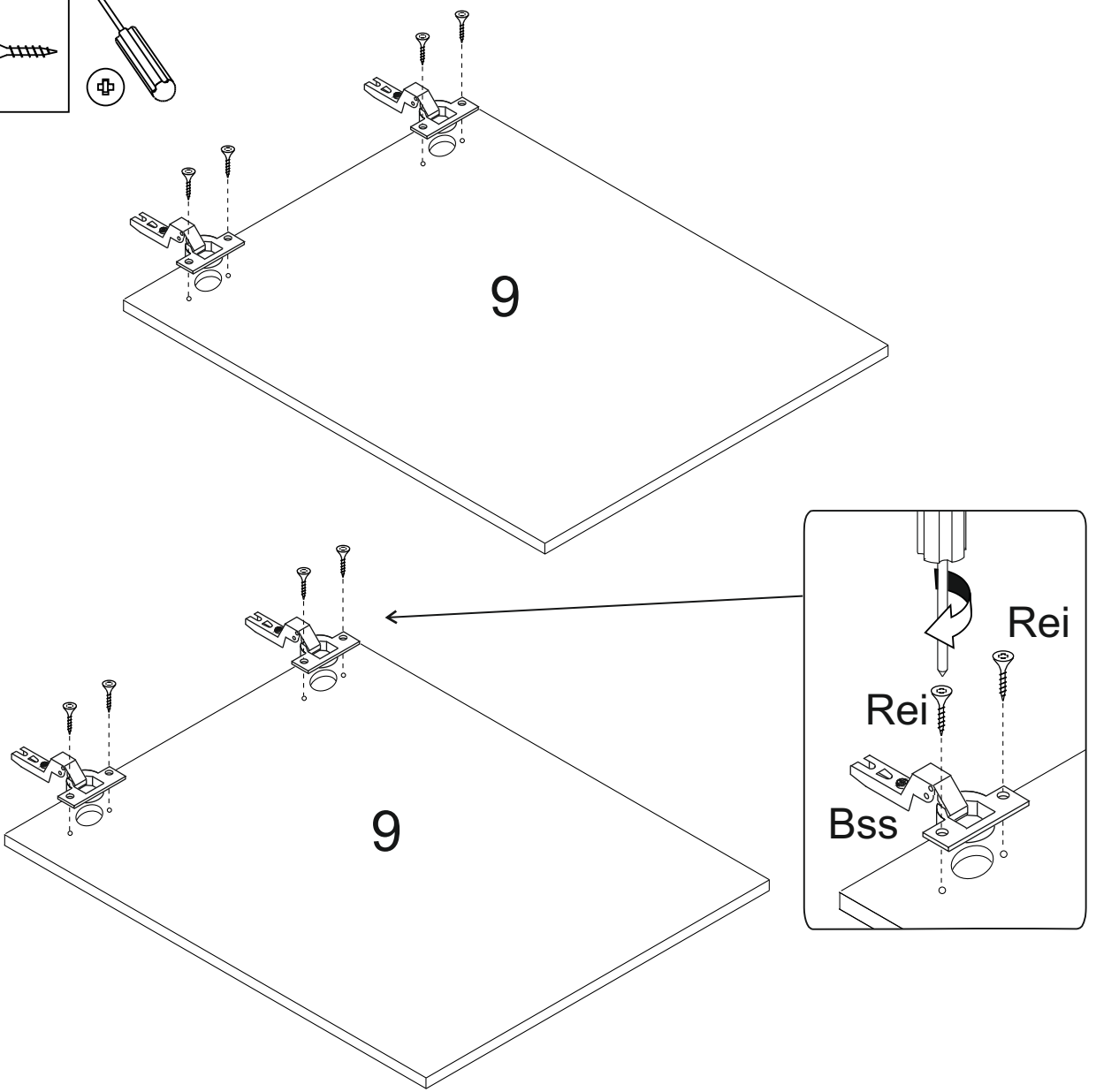
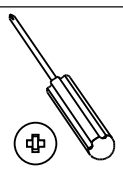





<p>Tap x 16</p>	<p>Col x 1</p>
-----------------	----------------



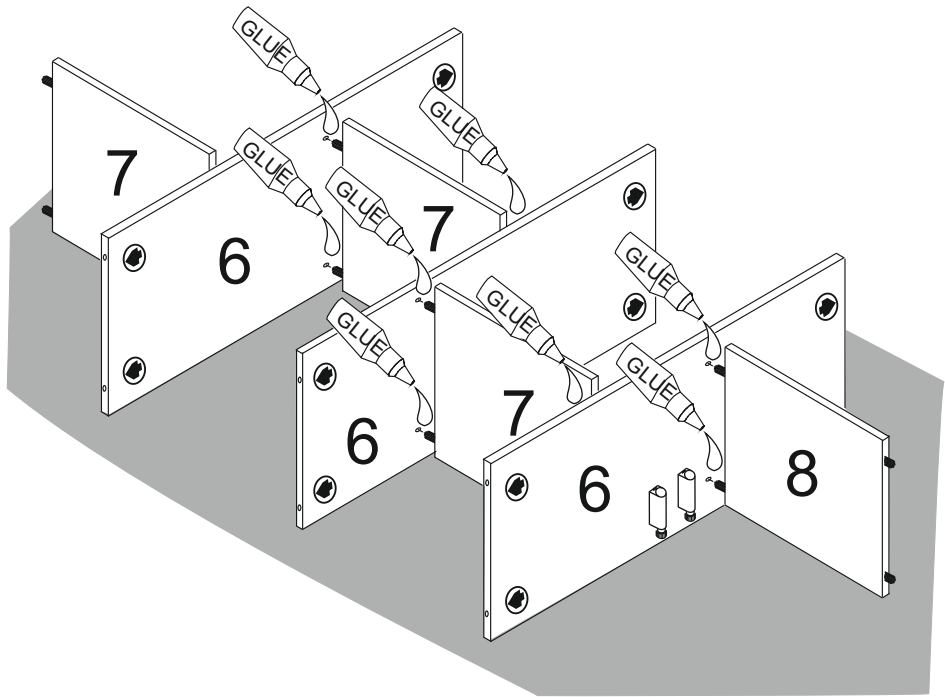
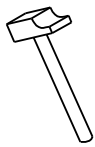
<p>Bss x 4</p>	<p>Rei x 8</p>
----------------	----------------



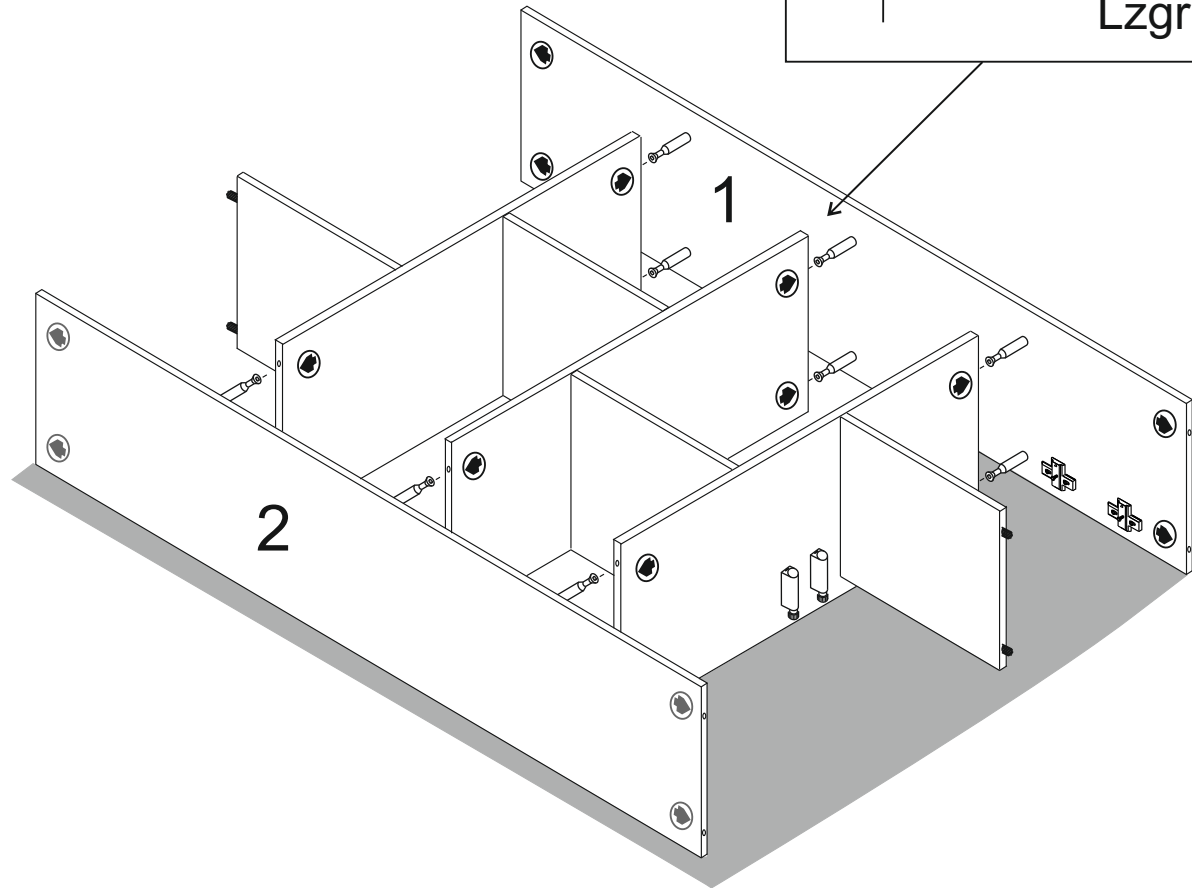
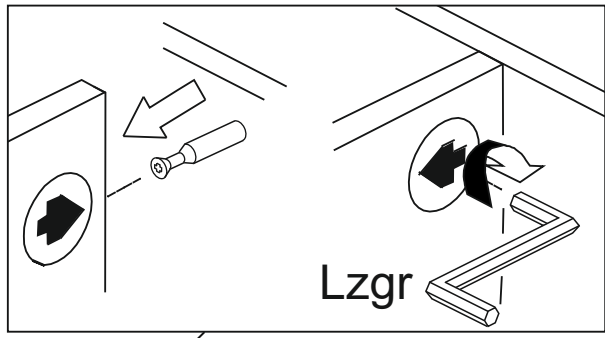
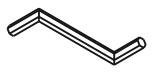
2 Col x 1






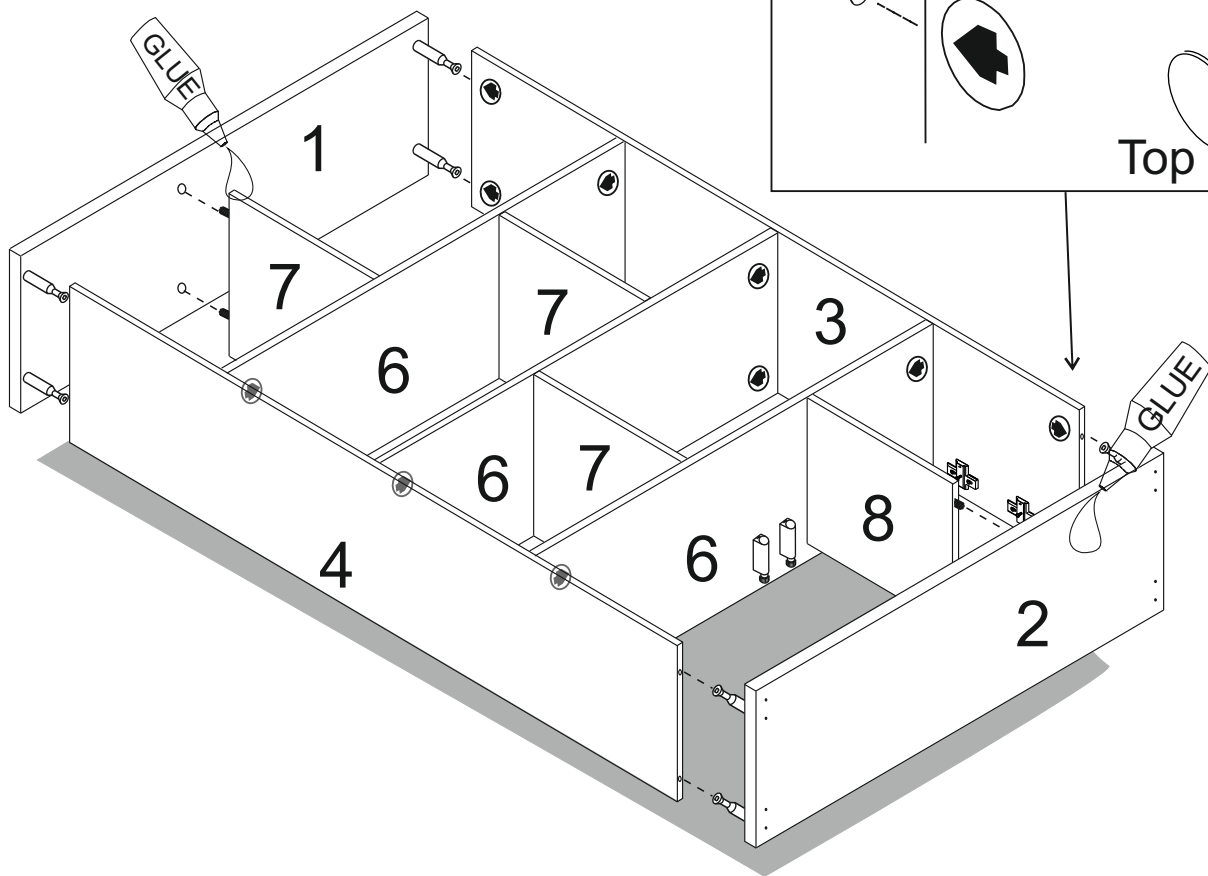
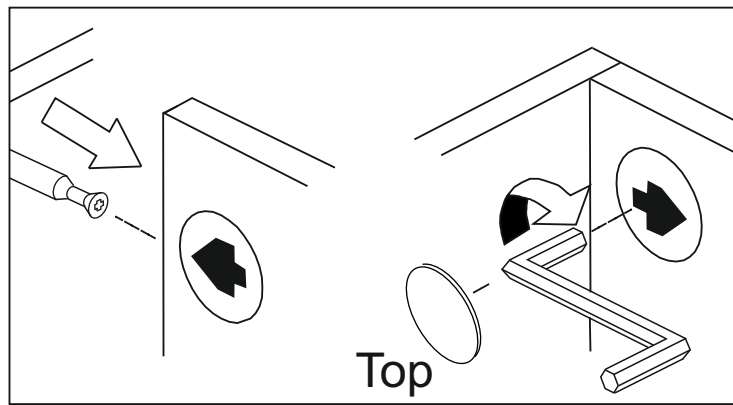
GLUE

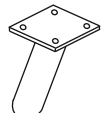

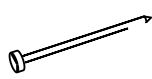


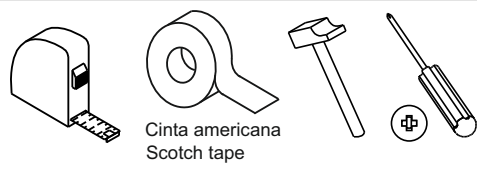
3 Lzgr x 1



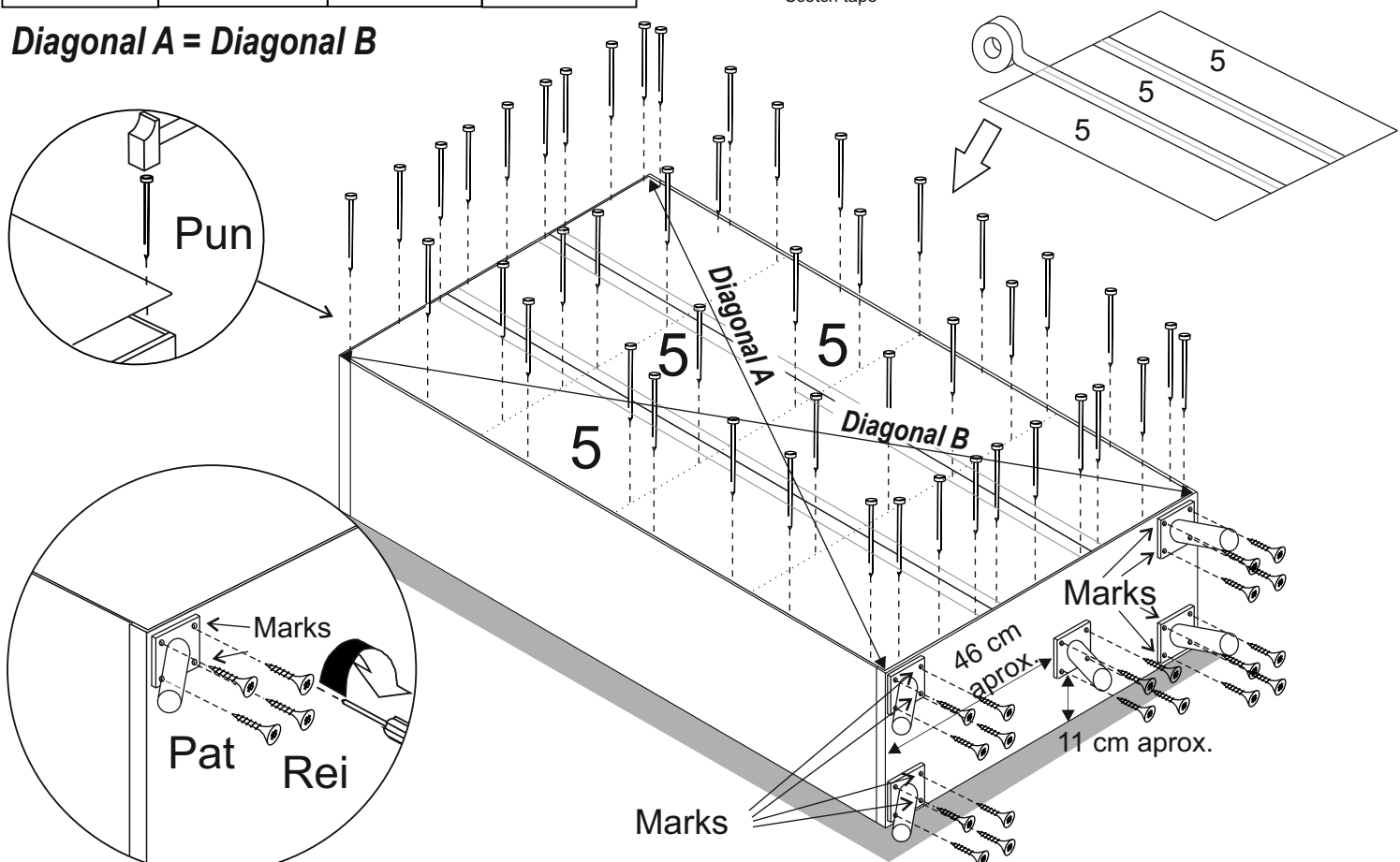
4	Lz x 1 	Top x 4 	Col x 1 
---	--	---	---



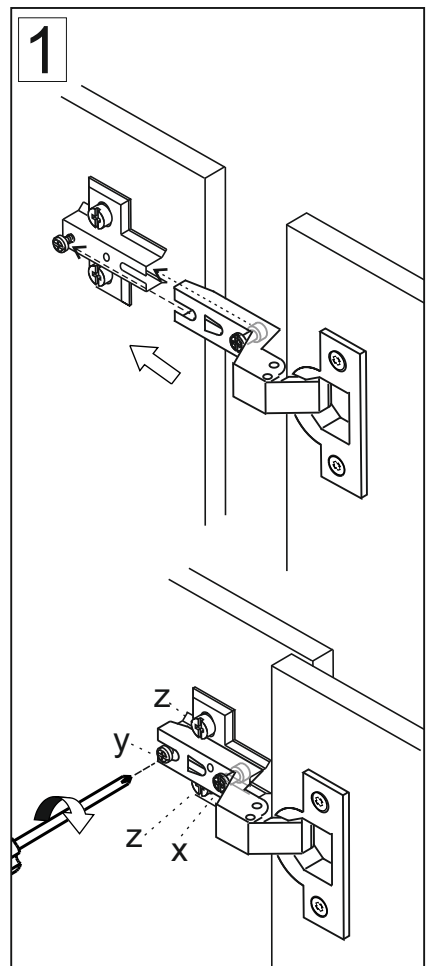
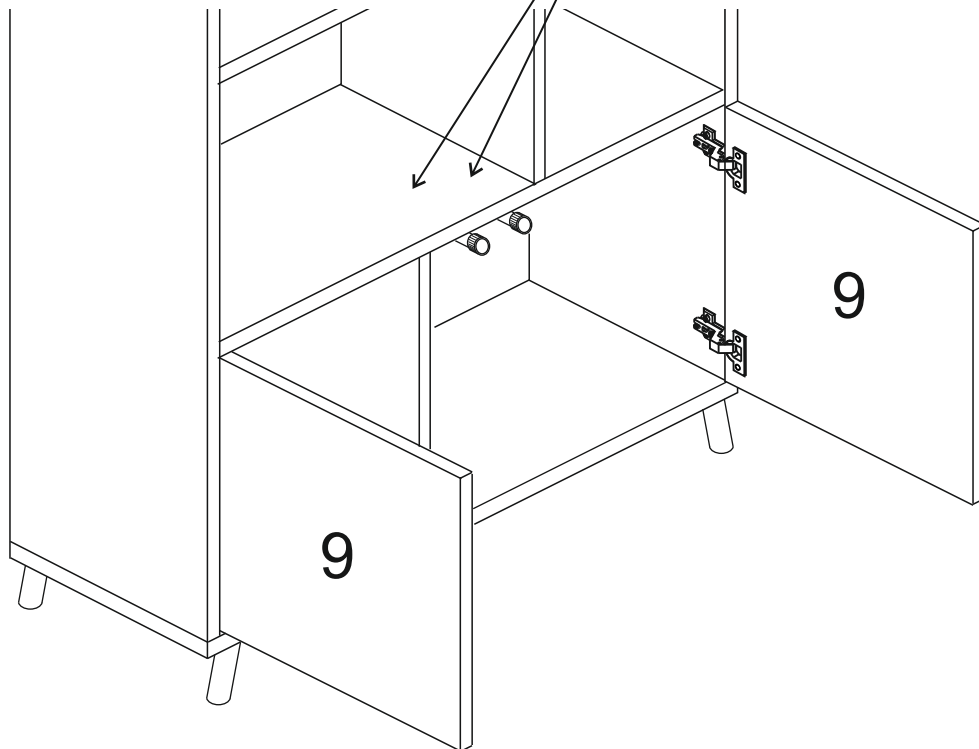
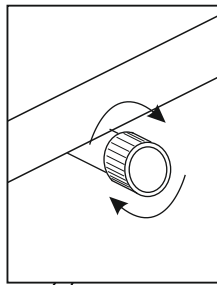
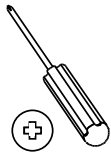
5	Pat x 5 	Rei x 20 	Pun x 40 
---	--	---	---



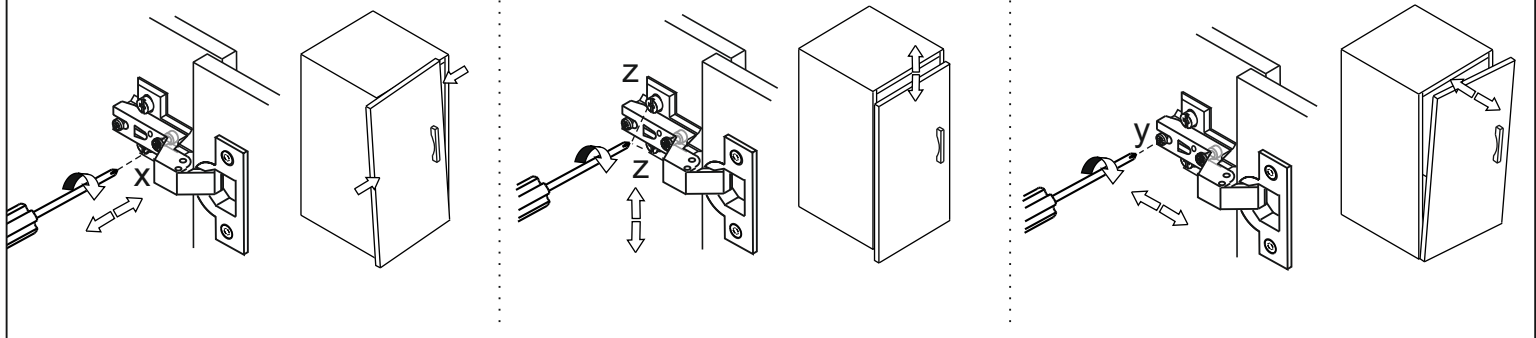
Diagonal A = Diagonal B



6



2



CONDICIONES DE USO Y MANTENIMIENTO

Producto de uso doméstico.

Evitar colocar el mueble cerca de fuentes de calor, de humedad o de una fuerte luz solar.

No lo limpie con productos abrasivos, ni disolventes.

Quitar el polvo antes de limpiarlo.

Utilizar un paño húmedo, limpio y sin pelos.

CONDITIONS OF USE AND MAINTENANCE OF FURNITURE

Product for domestic use only.

Avoid placing the furniture near sources of heat, damp, or strong sunlight.

Do not clean with abrasive products or cleaning products with solvents.

Use a dust remover before any cleaning process.

It is recommended to use a damp, lint-free clean cloth.

ATENCIÓN AL CLIENTE

CUSTOMER SUPPORT

(+34)964 321 111

8am-1pm 3pm-5:30pm Lunes a viernes
Monday to Friday

Web: www.mueblespitarch.com

e-mail: comercial@mueblespitarch.com

LOTE/BATCH NUMBER

5007